



## Prognostic Value of Change in Red Cell Distribution Width 1 Month After Discharge in Acute Decompensated Heart Failure Patients

Jaewon Oh, MD; Seok-Min Kang, MD, PhD; Hoyoun Won, MD; Namki Hong, MD;  
Soo-Young Kim, MD; Sungha Park, MD, PhD; Sang-Hak Lee, MD, PhD;  
Yangsoo Jang, MD, PhD; Namsik Chung, MD, PhD

**Background:** Red cell distribution width (RDW) is a novel prognostic marker independently associated with adverse outcomes in acute decompensated heart failure (ADHF) patients. The aim of the present study was to assess whether the change in RDW after discharge had prognostic value in patients with ADHF.

**Methods and Results:** RDW was measured in 261 patients admitted with ADHF, at admission and at discharge and 1 month after discharge. Cardiovascular (CV) events were defined as CV mortality and heart failure rehospitalization. Kaplan–Meier analysis showed that patients with positive RDW change between admission and 1 month after discharge ( $RDW_{\Delta 1Mdis-adm}$ ;  $n=136$ ) had a significantly higher number of CV events compared with patients with no positive  $RDW_{\Delta 1Mdis-adm}$  ( $n=125$ ; 60.3% vs. 47.2%, log-rank:  $P=0.007$ ). On Cox hazards analysis, a positive  $RDW_{\Delta 1Mdis-adm}$  was an independent predictor of CV events after adjusting for other CV risk factors (hazard ratio, 1.740; 95% confidence interval: 1.149–2.633,  $P=0.009$ ).

**Conclusions:** A novel relationship was noted between positive  $RDW_{\Delta 1Mdis-adm}$  and CV events in ADHF patients. Measurement of RDW at 1 month after ADHF assists in the prediction of adverse CV outcomes. Therefore, repeated measurement of RDW is a simple and inexpensive method that may facilitate assessment of CV risk stratification in patients with ADHF. (*Circ J* 2012; **76**: 109–116)

**Key Words:** Acute decompensated heart failure; Prognosis; Red cell distribution width

The risk stratification of patients admitted with acute decompensated heart failure (ADHF) is determined by measuring prognostically significant biomarkers. Red cell distribution width (RDW) is a measurement of size variability of the red blood cells, easily measured using modern cell counters. Generally, a high RDW may reflect reticulocytosis due to iron deficiency anemia and hemolytic disorders. Recently, RDW has been found to be a novel prognostic marker in patients with heart failure (HF),<sup>1–6</sup> prior myocardial infarction without HF,<sup>7,8</sup> and pulmonary hypertension.<sup>9</sup> Two large epidemiologic studies further suggested that RDW was associated with all-cause mortality including cardiovascular (CV) mortality even in a cohort without anemia, or iron, folate and vitamin B deficiency.<sup>10,11</sup>

ADHF is the most common cause for hospitalization for patients >65 years of age.<sup>12</sup> Therefore, accurate prediction of ADHF outcome is needed and many approaches for this have been suggested. To date, B-type natriuretic peptide (BNP),

N-terminal pro-BNP (NT-proBNP), cardiac troponins, C-reactive protein, uric acid, soluble interleukin-1 receptor family member ST2 (ST2) and their combinations have been found to be related to the severity and prognosis of patients with ADHF.<sup>13,14</sup> Serial monitoring and interval change as well as initial value have also been found to be well associated with prognosis in CV disease patients including HF.<sup>15–18</sup> Recent studies have reported that both RDW levels at admission and at discharge are prognostic markers independent of NT-proBNP in ADHF patients.<sup>2,3,5</sup> No study, however, has investigated repeated measurements of RDW and its prognostic value in ADHF patients. We investigated the prognostic value of change in RDW via measurements at admission, at discharge, and 1 month after discharge in patients with ADHF.

Received June 27, 2011; revised manuscript received August 24, 2011; accepted August 30, 2011; released online October 27, 2011 Time for primary review: 22 days

Cardiology Division, Severance Cardiovascular Hospital and Cardiovascular Research Institute (J.O., S.-M.K., H.W., N.H., S.-Y.K., S.P., S.-H.L., Y.J., N.C.), Brain Korea 21 Project for Medical Science (S.-M.K., Y.J., N.C.), Yonsei University College of Medicine, Seoul, Korea  
Mailing address: Seok-Min Kang, MD, PhD, Cardiology Division, Yonsei University College of Medicine, 134 Shinchon-dong, Seodaemun-gu, Seoul, 120-752, Korea. E-mail: smkang@yuhs.ac

ISSN-1346-9843 doi:10.1253/circj.CJ-11-0664

All rights are reserved to the Japanese Circulation Society. For permissions, please e-mail: [cj@j-circ.or.jp](mailto:cj@j-circ.or.jp)

	Total (n=261)	CV events		P value†
		No (n=120)	Yes (n=141)	
<b>Clinical</b>				
Male sex	143 (54.8)	70 (58.3)	73 (51.8)	0.175
Age (years)	62.6±14.2	60.9±15.0	64.0±13.4	0.075
BMI (kg/m <sup>2</sup> )	23.0±4.5	23.5±5.2	22.6±3.8	0.103
NYHA III, IV	261 (100)	136 (100)	125 (100)	1.000
Admission history	99 (37.9)	27 (22.5)	72 (51.1)	<0.001
Ischemic origin	87 (33.3)	55 (39.0)	32 (26.7)	0.024
Diabetes	81 (31.0)	47 (33.3)	34 (28.3)	0.231
Hypertension	131 (50.2)	69 (48.9)	62 (51.7)	0.376
Atrial fibrillation	123 (47.1)	50 (41.7)	73 (51.8)	0.066
Dobutamine infusion	74 (28.4)	32 (26.7)	42 (29.8)	0.585
LVEF (%)	33.2±15.1	33.7±14.3	32.6±15.8	0.594
SBP (mmHg)	119.6±21.9	123.3±22.6	116.3±20.7	0.009
Heart rate (beats/min)	83.1±17.3	83.7±17.9	82.6±16.9	0.601
<b>Laboratory</b>				
Cholesterol (mg/dl)	150±40	155±40	146±39	0.061
Uric acid (mg/dl)	7.0±5.9	6.3±2.4	7.7±7.8	0.081
eGFR (ml·min <sup>-1</sup> ·1.73m <sup>-2</sup> )	59.6±28.0	65.4±26.5	54.5±28.5	0.002
NT-proBNP <sub>adm</sub> (pg/ml)	4,245.0	3,839.5	4,428.0	0.667
Hb <sub>adm</sub> (g/dl)	12.7±2.3	13.1±2.3	12.3±2.2	0.005
Hb <sub>dis</sub> (g/dl)	12.0±2.4	12.4±2.3	11.6±2.2	0.019
Hb <sub>1Mdis</sub> (g/dl)	12.5±2.2	12.8±2.5	12.2±2.0	0.041
RDW <sub>adm</sub> (%)	14.2±2.0	13.7±1.4	14.7±2.3	<0.001
RDW <sub>dis</sub> (%)	14.3±1.7	13.9±1.4	14.7±1.9	<0.001
RDW <sub>1Mdis</sub> (%)	14.4±1.9	13.8±1.5	14.9±2.0	<0.001
Positive RDW <sub>Δdis-adm</sub>	109 (41.8)	46 (38.3)	63 (44.7)	0.141
Positive RDW <sub>Δ1Mdis-adm</sub>	136 (52.1)	54 (45.0)	82 (58.2)	0.023
<b>Discharge medications</b>				
ACE inhibitors/ARBs	207 (79.3)	100 (83.3)	107 (75.9)	0.092
β-blockers	124 (47.5)	70 (49.6)	54 (45.0)	0.266
Diuretics	221 (84.7)	122 (86.5)	99 (82.5)	0.233

Data given as mean-SD or n (%) or median.

†T-test or chi-square test or Mann-Whitney U-test.

ADHF, acute decompensated heart failure; CV, cardiovascular; BMI, body mass index; NYHA, New York Heart Association functional class; LVEF, left ventricular ejection fraction; SBP, systolic blood pressure; eGFR, estimated glomerular filtration rate; NT-proBNP<sub>adm</sub>, N-terminal pro-brain natriuretic peptide at admission; Hb<sub>adm</sub>, hemoglobin at admission; Hb<sub>dis</sub>, Hb at discharge; Hb<sub>1Mdis</sub>, Hb at 1-month after discharge; RDW, red cell width; RDW<sub>adm</sub>, RDW at admission; RDW<sub>dis</sub>, RDW at discharge; RDW<sub>1Mdis</sub>, RDW at 1-month after discharge; RDW<sub>Δdis-adm</sub>, RDW<sub>dis</sub>-RDW<sub>adm</sub>; RDW<sub>Δ1Mdis-adm</sub>, RDW<sub>1Mdis</sub>-RDW<sub>adm</sub>; ACE, angiotensin-converting enzyme; ARB, angiotensin II receptor blocker.

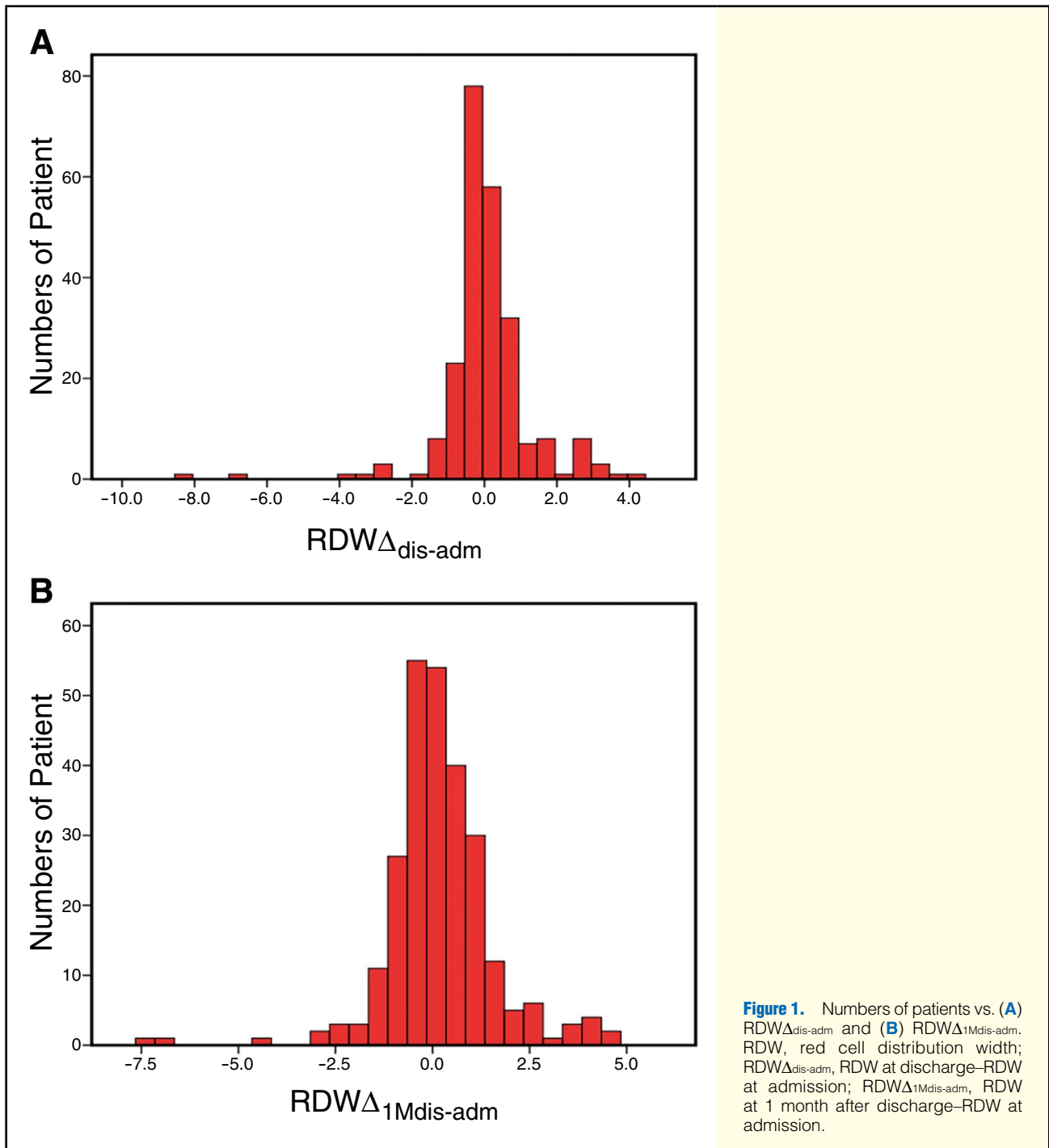
## Methods

### Patients

We retrospectively investigated consecutive patients who visited the emergency department (ED) of Severance Cardiovascular Hospital, Seoul, Korea between January 2005 and June 2009 with clinical diagnosis (rale or generalized edema or pulmonary congestion) of ADHF and left ventricular ejection fraction (LVEF) <50% measured on transthoracic echocardiography using Simpson's biplane rule within 24 h. Two-dimensional echocardiography and RDW measured at admission, at discharge and 1 month after discharge were available for 261 patients. Patients with known hematologic diseases such as hemolytic anemia, neoplastic metastases to bone marrow, pregnancy, severe arthritis, inflammatory bowel diseases and transfusion, iron replacement therapy, which can increase plasma RDW levels, and other extracellular fluid-increasing diseases (eg, hypothyroidism and liver cirrhosis) were excluded.

### Measurements of Blood Chemistry and RDW

Patients had venous blood collected for measurement of routine blood chemistry and NT-proBNP at admission. The blood samples were tested with NT-proBNP, which was kept at 4°C, using an electrochemiluminescence immunoassay (Elecys proBNP; Roche Diagnostics, Basel, Switzerland) within 1 h of ED visit. RDW was measured using the Coulter STK-S analyzer (Coulter, FL, USA) in the Severance Cardiovascular Hospital, laboratory. RDW<sub>adm</sub> was defined as RDW at admission; RDW<sub>dis</sub> as RDW at discharge; RDW<sub>1Mdis</sub> as RDW 1 month after discharge. The change in RDW between admission and discharge (RDW<sub>Δdis-adm</sub>) was calculated as RDW<sub>dis</sub>-RDW<sub>adm</sub>, and that between admission and 1 month after discharge (RDW<sub>Δ1Mdis-adm</sub>) as RDW<sub>1Mdis</sub>-RDW<sub>adm</sub>. The change in hemoglobin (Hb) between admission and discharge (Hb<sub>Δdis-adm</sub>) was calculated as Hb<sub>dis</sub>-Hb<sub>adm</sub>, and that between admission and 1 month after discharge (Hb<sub>Δ1Mdis-adm</sub>) as Hb<sub>1Mdis</sub>-Hb<sub>adm</sub>. We estimated glomerular filtration rate (eGFR) using the Modi-



fication of Diet in Renal Disease formula as follows:  $170 \times (\text{SCr})^{-0.999} \times (\text{age})^{-0.176} \times (\text{BUN})^{-0.170} \times (\text{albumin})^{0.318} \times 0.762$  (if female), where SCr is serum creatinine in mg/dl.<sup>19</sup> The present study was approved by the internal review board of Severance Hospital.

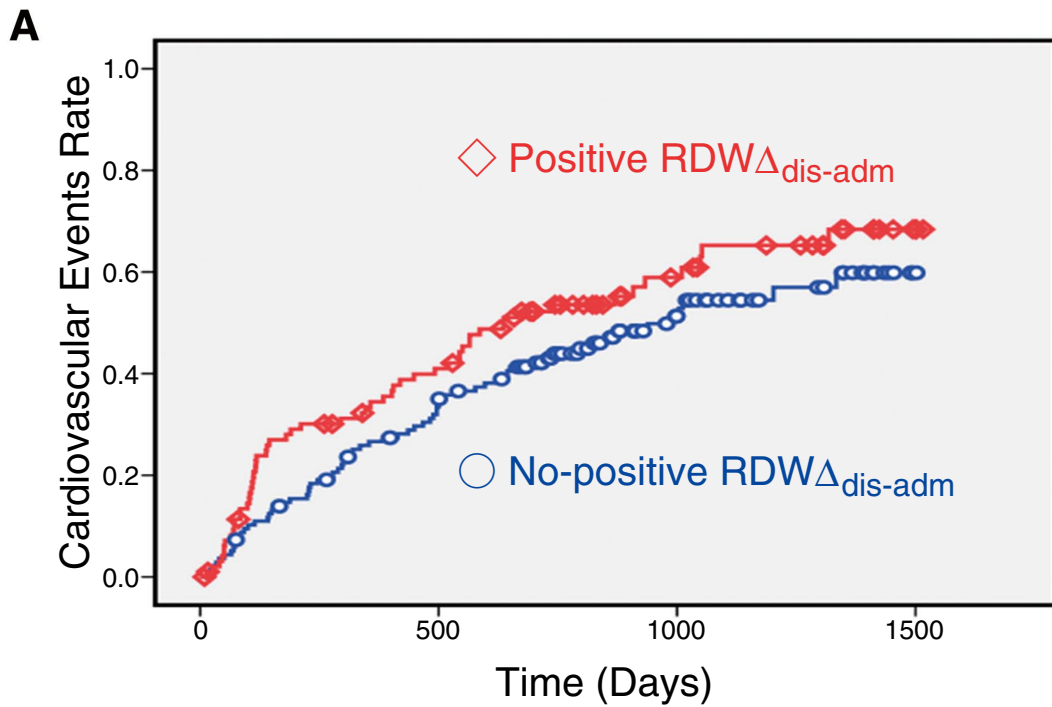
### Clinical Outcomes

All patients' followed up records were reviewed. Median post-discharge follow-up was 636 days (interquartile range [IQR], 228–912). The primary endpoint was the composite of CV mortality and HF rehospitalization due to an exacerbation of HF requiring more than the treatment provided before the hos-

pitalization. There were only 2 cases of non-CV mortality.

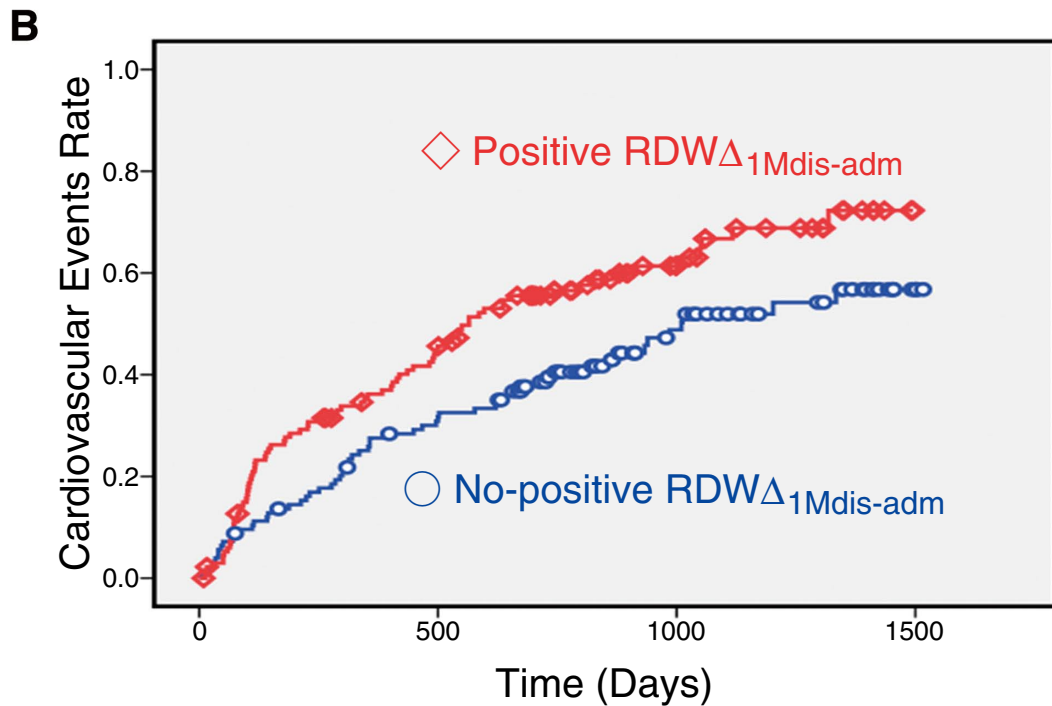
### Statistical Analysis

SPSS version 17.0 (SPSS, Chicago, IL, USA) was used for statistical analysis. Continuous variables are given as mean  $\pm$  SD except for NT-proBNP, which is given as median and IQR when skewed. Categorical variables are given as numbers or percentages. We compared differences between groups using Student's t-test, Mann–Whitney U-test and paired Student's t-test for RDW change. Correlations of RDW change with changes in other variables were examined using Pearson correlation analysis. Kaplan–Meier survival analysis



No. at Risk ( $RDW_{\Delta dis-adm}$ )

Positive	109	59	21	3
No-positive	152	94	31	1



No. at Risk ( $RDW_{\Delta 1Mdis-adm}$ )

Positive	136	69	23	0
No-positive	125	82	33	4

**Figure 2.** Kaplan–Meier curves for cardiovascular (CV) events according to (A)  $RDW_{\Delta dis-adm}$  and (B)  $RDW_{\Delta 1Mdis-adm}$ . RDW, red cell distribution width;  $RDW_{\Delta dis-adm}$ , RDW at discharge–RDW at admission;  $RDW_{\Delta 1Mdis-adm}$ , RDW at 1 month after discharge–RDW at admission.

was used to test the influence of the change in RDW on CV events, with log-rank test. The independent effect of variables on CV events was calculated using Cox multivariate proportional hazards regression analysis, incorporating covariates with  $P < 0.10$  on univariate analysis. Hazard ratio (HR) with 95% confidence interval (CI) demonstrated the risk of CV events.  $P < 0.05$  was considered significant and all reported probability values were 2-tailed.

## Results

### Baseline Characteristics of ADHF Patients and Clinical Outcomes

The baseline characteristics are summarized in **Table 1**. The etiology of HF was idiopathic dilated cardiomyopathy in 77 patients (29.5%), valvular in 45 (17.2%), ischemic in 87 (33.3%) and hypertensive in 17 (6.5%). No significant differences were observed in dobutamine infusion therapy at admission and discharge medications between patients without CV events and with CV events. As compared with patients without CV events, patients who developed CV events had significantly higher previous admission history, lower ischemic origin, lower systolic blood pressure (SBP), lower eGFR, lower Hb<sub>adm</sub>, lower Hb<sub>dis</sub>, lower Hb<sub>1Mdis</sub>, higher RDW<sub>adm</sub>, higher RDW<sub>dis</sub>, and higher RDW<sub>1Mdis</sub>. During a median follow-up of 636 days (IQR, 228–912 days), CV events occurred in 54.0% of patients (141/261), and CV mortality in 12.6% (33/261). The incidence of positive RDW $\Delta$ <sub>1Mdis-adm</sub> was significantly higher in patients who developed CV events than patients without CV events ( $P=0.023$ ). Moreover, LVEF, NT-proBNP and discharge medications were not significantly different between the two groups.

### Changes in RDW After ADHF

Mean RDW changed from  $14.2 \pm 2.0\%$  at admission to  $14.3 \pm 1.7\%$  at discharge ( $P=0.493$ ) to  $14.4 \pm 1.9\%$  at 1 month after discharge ( $P=0.028$ ). Mean RDW $\Delta$ <sub>dis-adm</sub> was  $0.06 \pm 1.26\%$  and RDW $\Delta$ <sub>1Mdis-adm</sub> was  $0.12 \pm 1.39\%$ . The distribution of RDW $\Delta$ <sub>dis-adm</sub> and RDW $\Delta$ <sub>1Mdis-adm</sub> are shown in **Figure 1**. In correlation analysis, RDW $\Delta$ <sub>1Mdis-adm</sub> was significantly correlated with RDW $\Delta$ <sub>dis-adm</sub> ( $r=0.787$ ,  $P < 0.001$ ), Hb $\Delta$ <sub>dis-adm</sub> ( $r=-0.246$ ,  $P < 0.001$ ) and Hb $\Delta$ <sub>1Mdis-adm</sub> ( $r=-0.246$ ,  $P < 0.001$ ) but not with BUN $\Delta$ <sub>1Mdis-adm</sub> ( $r=-0.049$ ,  $P=0.434$ ) nor with creatinine $\Delta$ <sub>1Mdis-adm</sub> ( $r=0.041$ ,  $P=0.516$ ).

**Table 2. Univariate Cox Proportional Hazards Analysis for CV Events**

	Univariate	
	HR (95%CI)	P value
RDW <sub>adm</sub> (%)	1.157 (1.089–1.230)	<0.001
RDW <sub>dis</sub> (%)	1.216 (1.120–1.321)	0.015
RDW <sub>1Mdis</sub> (%)	1.230 (1.144–1.322)	0.047
RDW $\Delta$ <sub>dis-adm</sub> (%)	0.952 (0.809–1.121)	0.557
RDW $\Delta$ <sub>1Mdis-adm</sub> (%)	1.071 (0.937–1.224)	0.317
Positive RDW $\Delta$ <sub>dis-adm</sub>	1.326 (0.932–1.885)	0.117
Positive RDW $\Delta$ <sub>1Mdis-adm</sub>	1.584 (1.133–2.217)	0.007
Hb <sub>adm</sub> (g/dl)	0.901 (0.840–0.966)	0.003
Hb <sub>dis</sub> (g/dl)	0.906 (0.844–0.972)	0.006
Hb <sub>1Mdis</sub> (g/dl)	0.925 (0.862–0.993)	0.031
Hb $\Delta$ <sub>dis-adm</sub> (g/dl)	0.977 (0.879–1.087)	0.675
Hb $\Delta$ <sub>1Mdis-adm</sub> (g/dl)	1.062 (0.955–1.182)	0.266
Positive Hb $\Delta$ <sub>dis-adm</sub> (g/dl)	0.984 (0.682–1.422)	0.933
Positive Hb $\Delta$ <sub>1Mdis-adm</sub> (g/dl)	1.060 (0.762–1.476)	0.729

HR, hazard ratio; CI, confidence interval. Other abbreviations see in Table 1.

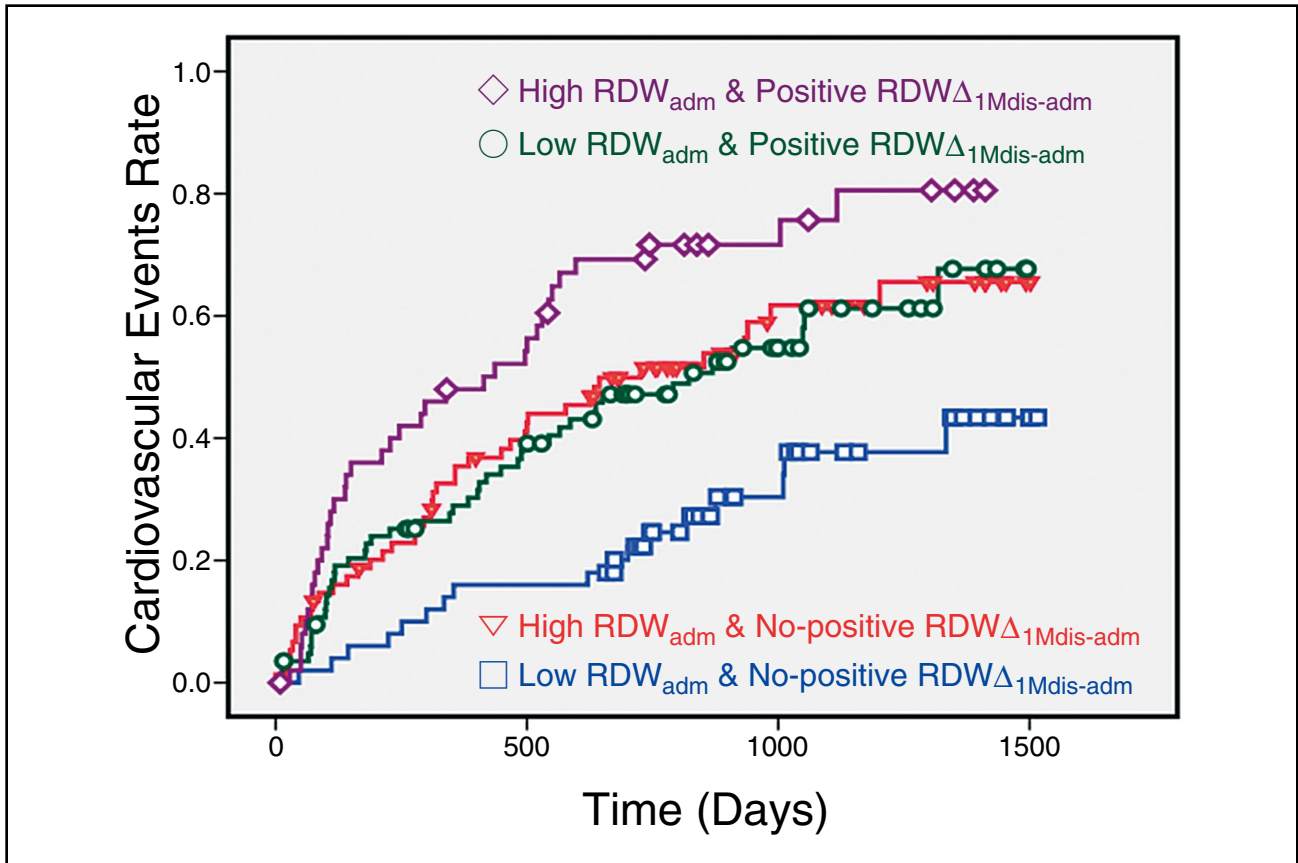
### RDW $\Delta$ <sub>1Mdis-adm</sub> as an Independent Predictor of CV Events

The primary composite endpoint of the present study was CV events including CV mortality and rehospitalization for HF. On Kaplan–Meier survival analysis, the positive RDW $\Delta$ <sub>dis-adm</sub> group ( $n=109$ ) tended to have a higher number of CV events compared with the no-positive RDW $\Delta$ <sub>dis-adm</sub> group ( $n=152$ ), but this was not significant (57.6% vs. 49.6%, log-rank  $P=0.115$ ; **Figure 2A**). The positive RDW $\Delta$ <sub>1Mdis-adm</sub> group ( $n=136$ ) had a significantly higher number of CV events compared with the no-positive RDW $\Delta$ <sub>1Mdis-adm</sub> group ( $n=125$ ; 60.3% vs. 47.2%; log-rank  $P=0.007$ ; **Figure 2B**), driven by significant change in HF rehospitalization (46.3% vs. 36.0%, log-rank  $P=0.016$ ). CV mortality was not different between the positive RDW $\Delta$ <sub>1Mdis-adm</sub> group and the no-positive RDW $\Delta$ <sub>1Mdis-adm</sub> group (14.0% vs. 11.2%, log-rank  $P=0.207$ ). On univariate Cox proportional hazards analysis, only positive RDW $\Delta$ <sub>1Mdis-adm</sub> (HR, 1.584; 95%CI: 1.133–2.217,  $P=0.007$ ) was a statistically significant predictor among the various RDW variables (**Table 2**). RDW and anemia at admission have also been found to be prognostic indicators in patients with AHF.<sup>2–5</sup> We therefore used Hb<sub>adm</sub>, RDW<sub>adm</sub> and positive

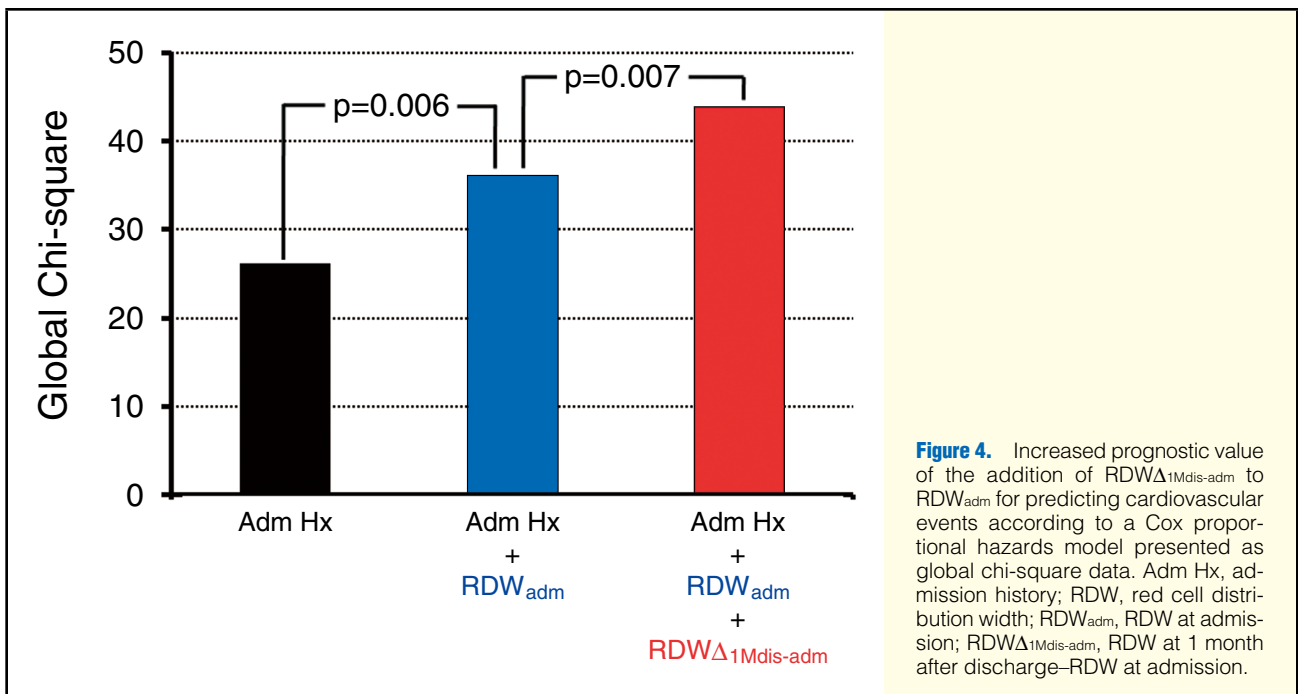
**Table 3. Cox Proportional Hazards Regression Analysis for CV Events**

	Univariate		Multivariate	
	HR (95%CI)	P value	HR (95%CI)	P value
Previous admission history	2.418 (1.731–3.376)	<0.001	2.097 (1.383–3.179)	<0.001
Ischemic origin	1.522 (1.084–2.138)	0.015		0.176
Atrial fibrillation	1.398 (1.005–1.946)	0.047		0.117
ACE inhibitors/ARBs	0.709 (0.482–1.044)	0.082		0.458
Age (years)	1.012 (1.000–1.024)	0.049		0.137
SBP (mmHg)	0.990 (0.982–0.999)	0.023		0.215
Cholesterol (mg/dl)	0.994 (0.989–0.999)	0.012		0.779
Uric acid (mg/dl)	1.018 (0.998–1.038)	0.081		0.055
eGFR (ml · min <sup>-1</sup> · 1.73m <sup>-2</sup> )	0.992 (0.986–0.998)	0.008		0.927
Hb <sub>adm</sub> (g/dl)	0.901 (0.840–0.966)	0.003		0.571
RDW <sub>adm</sub> (%)	1.157 (1.089–1.230)	<0.001	1.140 (1.042–1.247)	0.004
Positive RDW $\Delta$ <sub>1Mdis-adm</sub>	1.584 (1.133–2.217)	0.007	1.740 (1.149–2.633)	0.009

Abbreviations see in Tables 1,2.



**Figure 3.** Kaplan–Meier curves for cardiovascular events vs. low/high  $RDW_{adm}$  and positive/no-positive  $RDW_{\Delta 1Mdis-adm}$ .  $RDW$ , red cell distribution width;  $RDW_{adm}$ ,  $RDW$  at admission;  $RDW_{\Delta 1Mdis-adm}$ ,  $RDW$  at 1 month after discharge– $RDW$  at admission. Low  $RDW_{adm}$ , <13.8%; high  $RDW_{adm}$ ,  $\geq 13.8\%$ .



**Figure 4.** Increased prognostic value of the addition of  $RDW_{\Delta 1Mdis-adm}$  to  $RDW_{adm}$  for predicting cardiovascular events according to a Cox proportional hazards model presented as global chi-square data. Adm Hx, admission history;  $RDW$ , red cell distribution width;  $RDW_{adm}$ ,  $RDW$  at admission;  $RDW_{\Delta 1Mdis-adm}$ ,  $RDW$  at 1 month after discharge– $RDW$  at admission.

RDW $\Delta_{1\text{Mdis-adm}}$  in a multiple Cox regression model to study the additional prognostic power of serial measurements of RDW compared to a single measurement. Positive RDW $\Delta_{1\text{Mdis-adm}}$  (HR, 1.740; 95%CI: 1.149–2.633,  $P=0.009$ ) was an independent predictor for CV events after adjusting for previous admission history, ischemic origin, atrial fibrillation, angiotensin-converting enzyme inhibitors/angiotensin II receptor blockers use, age, SBP, uric acid, eGFR, Hb<sub>adm</sub>, and RDW<sub>adm</sub> (Table 3).

### Addition of RDW $\Delta_{1\text{Mdis-adm}}$ to RDW<sub>adm</sub> Increases Prognostic Value

We tested whether the addition of RDW $\Delta_{1\text{Mdis-adm}}$  has an incremental effect on prognostic value when added to RDW<sub>adm</sub> by dividing patients into 2 groups according to RDW<sub>adm</sub>. On Kaplan–Meier survival analysis, a group with both high RDW<sub>adm</sub> ( $\geq 13.8\%$ ) and positive RDW $\Delta_{1\text{Mdis-adm}}$  ( $n=51$ ) had a significantly higher number of CV events than a group with high RDW<sub>adm</sub> and no-positive RDW $\Delta_{1\text{Mdis-adm}}$  ( $n=75$ ), a group with low RDW<sub>adm</sub> ( $<13.8\%$ ) and positive RDW $\Delta_{1\text{Mdis-adm}}$  ( $n=85$ ) and a group with low RDW<sub>adm</sub> and no-positive RDW $\Delta_{1\text{Mdis-adm}}$  ( $n=50$ ) (72.5% vs. 52.9% vs. 56.0% vs. 34.0%; log-rank  $P<0.001$ ; Figure 3). In a Cox proportional hazards model, the addition of positive RDW $\Delta_{1\text{Mdis-adm}}$  to RDW<sub>adm</sub> significantly increased the likelihood of prediction of CV events (global chi-square 36.2 vs. 43.9,  $P=0.007$ ; Figure 4).

## Discussion

The principal findings of the present study are that positive RDW $\Delta_{1\text{Mdis-adm}}$  is an independent prognostic factor for CV events in ADHF patients, and that repeated measurements of RDW have an increased prognostic value for predicting CV events to single measurement of RDW in these patients. Herein we report interesting data on the potential relationship between positive RDW $\Delta_{1\text{Mdis-adm}}$  and CV events after ADHF.

### Repeated Measurements of RDW After ADHF

RDW was first found to be a prognostic marker in symptomatic chronic HF patients in the Candesartan in Heart Failure: Assessment of Reduction in Mortality and Morbidity (CHARM) study.<sup>1</sup> Further studies showed that higher RDW levels at admission and at discharge were associated with poor long-term outcomes regardless of anemia status, thereby demonstrating increased prognostic power compared to NT-proBNP in patients with ADHF.<sup>2–5</sup>

Repeated measurements and the change in biomarker over time are known to have additive prognostic value compared to single measurements, because the hemodynamic status changes over time after ADHF. The prognostic value of serial measurements of BNP, NT-proBNP and ST2 has been investigated in patients with HF.<sup>18,20–23</sup> Recently, Dabbah et al reported that an increase in RDW during hospital stay was associated with poor clinical outcomes, and demonstrated the prognostic importance of serial measurements of RDW in patients with acute myocardial infarction.<sup>8</sup> In the present study we observed that positive RDW $\Delta_{1\text{Mdis-adm}}$  could significantly predict adverse CV events, but positive RDW $\Delta_{\text{dis-adm}}$  could not, although there was a significant correlation between RDW $\Delta_{1\text{Mdis-adm}}$  and RDW $\Delta_{\text{dis-adm}}$ . Also, we did not find a significant difference in CV events according to absolute change of RDW $\Delta_{1\text{Mdis-adm}}$  (data not shown). This discrepancy could be explained by the relatively small size of the present subject cohort. Thus, we expect that significant predictive power of positive RDW $\Delta_{\text{dis-adm}}$  could be demonstrated in a large-scale study in the future. The present results show that CV mortality

was not different between the positive RDW $\Delta_{1\text{Mdis-adm}}$  and the no-positive RDW $\Delta_{1\text{Mdis-adm}}$  groups. This might be because we did not include in-hospital mortality in the present study. One of the main CV events is in-hospital death in patients with ADHF. In addition to RDW $\Delta_{1\text{Mdis-adm}}$ , RDW<sub>adm</sub> was also an independent predictor for CV events in the multiple Cox regression model, which is compatible with previous studies.<sup>2,3,5</sup> Moreover, the high RDW<sub>adm</sub> and the positive RDW $\Delta_{1\text{Mdis-adm}}$  groups had a significantly higher number of CV events than the other groups. Therefore, positive RDW $\Delta_{1\text{Mdis-adm}}$  has an increased prognostic value compared to RDW<sub>adm</sub> for the prediction of CV events in ADHF patients.

### RDW as a Surrogate Marker of Multiple Pathophysiologies in HF

It is unclear whether RDW has a pathophysiological role in HF or whether it simply identifies a population with severe LV dysfunction. Several mechanisms, however, have been suggested to explain the increase in RDW and how it works as a prognostic marker in patients with ADHF. First, persistent inflammation is known to be a principal pathophysiologic finding and poor prognostic factor for HF.<sup>24</sup> Several studies have shown that increased RDW levels in patients with ADHF are associated with increased inflammatory status.<sup>6,25,26</sup> Second, an increase in RDW is associated with increased oxidative stress that characterizes exacerbation of heart failure.<sup>27,28</sup> Because oxidative stress is related to red cell survival, it could explain the increase in RDW in ADHF patients.<sup>29</sup> Third, increased RDW may be associated with increased hemodynamic overload, which is important in the mechanism of HF exacerbation. Our previous study demonstrated that high RDW levels were significantly associated with elevated early mitral inflow velocity to early diastolic mitral annular velocity (E/E') after adjusting NT-proBNP.<sup>19</sup> Furthermore, a high RDW was correlated with higher erythropoietin, lower serum iron and total iron binding capacity saturation in patients with chronic HF.<sup>26</sup> This means that the ability to mobilize and use iron stores may be impaired. Finally, a recent report showed that increased RDW was associated with troponin T, a marker of myocardial injury.<sup>30</sup> All these suggested mechanisms may explain why RDW is an independent predictive and prognostic marker in patients with ADHF, indicating that RDW may be a new surrogate marker of multiple pathophysiologic processes in ADHF.

### Study Limitations

First, we did not measure NT-proBNP levels at discharge/1 month after discharge and could not compare the prognostic power of RDW change with that of NT-proBNP change due to limitations of the retrospective study design. Further prospective studies are needed to show whether serial measurements of RDW have increased prognostic value compared to well-known markers such as NT-proBNP and ST2.<sup>18,21</sup> Second, we did not analyze the data for in-hospital mortality and CV events within 1 month, indicating that the present study may not be free from selection bias, although it was inevitable according to study design. Third, we could not demonstrate prognostic power of baseline LVEF and NT-proBNP level in the present analysis, despite the general concepts in HF. This might be due to the relatively skewed data measured in acute decompensated status. Fourth, we could not investigate hematologic laboratory parameters (eg, total iron binding capacity, serum ferritin level), which could help to distinguish the origin of increased RDW, even though we excluded the patients with transfusion or iron replacement therapy.<sup>31</sup> Finally, the present

study group was characterized by a relatively low proportion of ischemic HF and  $\beta$ -blocker use, which may influence the present results. Therefore, a well-designed larger prospective study should be carried out in order to emphasize the clinical importance and application of repeated measurements of RDW after ADHF.

## Conclusions

We have shown that repeated measurements of RDW increase the likelihood of predicting CV events compared to single measurements of RDW in ADHF patients. We found that positive RDW $\Delta$ <sub>dis-adm</sub> is a powerful independent prognostic factor for CV events. Therefore, repeated measurements of RDW is a simple and inexpensive method that may assist in determining CV risk in patients with ADHF.

## Acknowledgments

The authors thank Bella Lee for assistance with the manuscript. This research was supported by a grant from KRIBB Research Initiative Program and a faculty research grant from Department of Internal Medicine, Yonsei University, College of Medicine for 2010.

## Disclosure

No conflict of interest declared.

## References

- Felker GM, Allen LA, Pocock SJ, Shaw LK, McMurray JJ, Pfeffer MA, et al. Red cell distribution width as a novel prognostic marker in heart failure: Data from the CHARM Program and the Duke Databank. *J Am Coll Cardiol* 2007; **50**: 40–47.
- Pascual-Figal DA, Bonaque JC, Redondo B, Caro C, Manzano-Fernandez S, Sanchez-Mas J, et al. Red blood cell distribution width predicts long-term outcome regardless of anaemia status in acute heart failure patients. *Eur J Heart Fail* 2009; **11**: 840–846.
- Jackson CE, Dalzell JR, Bezlyak V, Tsorlalis IK, Myles RC, Spooner R, et al. Red cell distribution width has incremental prognostic value to B-type natriuretic peptide in acute heart failure. *Eur J Heart Fail* 2009; **11**: 1152–1154.
- Al-Najjar Y, Goode KM, Zhang J, Cleland JG, Clark AL. Red cell distribution width: An inexpensive and powerful prognostic marker in heart failure. *Eur J Heart Fail* 2009; **11**: 1155–1162.
- van Kimmenade RR, Mohammed AA, Uthamalingam S, van der Meer P, Felker GM, Januzzi JL Jr. Red blood cell distribution width and 1-year mortality in acute heart failure. *Eur J Heart Fail* 2010; **12**: 129–136.
- Forhecz Z, Gombos T, Borgulya G, Pozsonyi Z, Prohaszka Z, Janoskuti L. Red cell distribution width in heart failure: Prediction of clinical events and relationship with markers of ineffective erythropoiesis, inflammation, renal function, and nutritional state. *Am Heart J* 2009; **158**: 659–666.
- Tonelli M, Sacks F, Arnold M, Moye L, Davis B, Pfeffer M. Relation between red blood cell distribution width and cardiovascular event rate in people with coronary disease. *Circulation* 2008; **117**: 163–168.
- Dabbah S, Hammerman H, Markiewicz W, Aronson D. Relation between red cell distribution width and clinical outcomes after acute myocardial infarction. *Am J Cardiol* 2010; **105**: 312–317.
- Hampole CV, Mehrotra AK, Thenappan T, Gomberg-Maitland M, Shah SJ. Usefulness of red cell distribution width as a prognostic marker in pulmonary hypertension. *Am J Cardiol* 2009; **104**: 868–872.
- Patel KV, Ferrucci L, Ershler WB, Longo DL, Guralnik JM. Red blood cell distribution width and the risk of death in middle-aged and older adults. *Arch Intern Med* 2009; **169**: 515–523.
- Perlstein TS, Weuve J, Pfeffer MA, Beckman JA. Red blood cell distribution width and mortality risk in a community-based prospective cohort. *Arch Intern Med* 2009; **169**: 588–594.
- Fonarow GC. Epidemiology and risk stratification in acute heart failure. *Am Heart J* 2008; **155**: 200–207.
- Daniels LB, Maisel AS. Natriuretic peptides. *J Am Coll Cardiol* 2007; **50**: 2357–2368.
- Braunwald E. Biomarkers in heart failure. *N Engl J Med* 2008; **358**: 2148–2159.
- Morrow DA, de Lemos JA, Blazing MA, Sabatine MS, Murphy SA, Jarolim P, et al. Prognostic value of serial B-type natriuretic peptide testing during follow-up of patients with unstable coronary artery disease. *JAMA* 2005; **294**: 2866–2871.
- Miller WL, Hartman KA, Burritt MF, Grill DE, Rodeheffer RJ, Burnett JC Jr, et al. Serial biomarker measurements in ambulatory patients with chronic heart failure: The importance of change over time. *Circulation* 2007; **116**: 249–257.
- Metra M, Nodari S, Parrinello G, Specchia C, Brentana L, Rocca P, et al. The role of plasma biomarkers in acute heart failure: Serial changes and independent prognostic value of NT-proBNP and cardiac troponin-T. *Eur J Heart Fail* 2007; **9**: 776–786.
- Masson S, Latini R, Anand IS, Barlera S, Angelici L, Vago T, et al. Prognostic value of changes in N-terminal pro-brain natriuretic peptide in Val-HeFT (Valsartan Heart Failure Trial). *J Am Coll Cardiol* 2008; **52**: 997–1003.
- Oh J, Kang SM, Hong N, Choi JW, Lee SH, Park S, et al. Relation between red cell distribution width with echocardiographic parameters in patients with acute heart failure. *J Card Fail* 2009; **15**: 517–522.
- Anand IS, Fisher LD, Chiang YT, Latini R, Masson S, Maggioni AP, et al. Changes in brain natriuretic peptide and norepinephrine over time and mortality and morbidity in the Valsartan Heart Failure Trial (Val-HeFT). *Circulation* 2003; **107**: 1278–1283.
- Boisot S, Beede J, Isakson S, Chiu A, Clopton P, Januzzi J, et al. Serial sampling of ST2 predicts 90-day mortality following destabilized heart failure. *J Card Fail* 2008; **14**: 732–738.
- Nishiyama K, Tsutomoto T, Yamaji M, Kawahara C, Fujii M, Yamamoto T, et al. Biological variation of brain natriuretic peptide and cardiac events in stable outpatients with nonischemic chronic heart failure. *Circ J* 2011; **75**: 341–347.
- Nishiyama K, Tsutomoto T, Kawahara C, Yamaji M, Sakai H, Yamamoto T, et al. Relationship between biological variation in B-type natriuretic peptide and plasma renin concentration in stable outpatients with dilated cardiomyopathy. *Circ J* 2011; **75**: 1897–1904.
- Torre-Amione G, Anker SD, Bourge RC, Colucci WS, Greenberg BH, Hildebrandt P, et al. Results of a non-specific immunomodulation therapy in chronic heart failure (ACCLAIM trial): A placebo-controlled randomised trial. *Lancet* 2008; **371**: 228–236.
- Lippi G, Targher G, Montagnana M, Salvagno GL, Zoppini G, Guidi GC. Relation between red blood cell distribution width and inflammatory biomarkers in a large cohort of unselected outpatients. *Arch Pathol Lab Med* 2009; **133**: 628–632.
- Allen LA, Felker GM, Mehra MR, Chiong JR, Dunlap SH, Ghali JK, et al. Validation and potential mechanisms of red cell distribution width as a prognostic marker in heart failure. *J Card Fail* 2010; **16**: 230–238.
- Cotter G, Felker GM, Adams KF, Milo-Cotter O, O'Connor CM. The pathophysiology of acute heart failure: Is it all about fluid accumulation? *Am Heart J* 2008; **155**: 9–18.
- Semba RD, Patel KV, Ferrucci L, Sun K, Roy CN, Guralnik JM, et al. Serum antioxidants and inflammation predict red cell distribution width in older women: The Women's Health and Aging Study I. *Clin Nutr* 2010; **29**: 600–604.
- Friedman JS, Lopez MF, Fleming MD, Rivera A, Martin FM, Welsh ML, et al. SOD2-deficiency anemia: Protein oxidation and altered protein expression reveal targets of damage, stress response, and antioxidant responsiveness. *Blood* 2004; **104**: 2565–2573.
- Adams KF Jr, Mehra MR, Oren RM, O'Connor CM, Chiong JR, Ghali JK, et al. Prospective evaluation of the association between cardiac troponin T and markers of disturbed erythropoiesis in patients with heart failure. *Am Heart J* 2010; **160**: 1142–1148.
- Matsumoto M, Tsujino T, Lee-Kawabata M, Naito Y, Akahori H, Sakoda T, et al. Iron regulatory hormone hepcidin decreases in chronic heart failure patients with anemia. *Circ J* 2010; **74**: 301–306.