



ASO VISUAL ABSTRACT

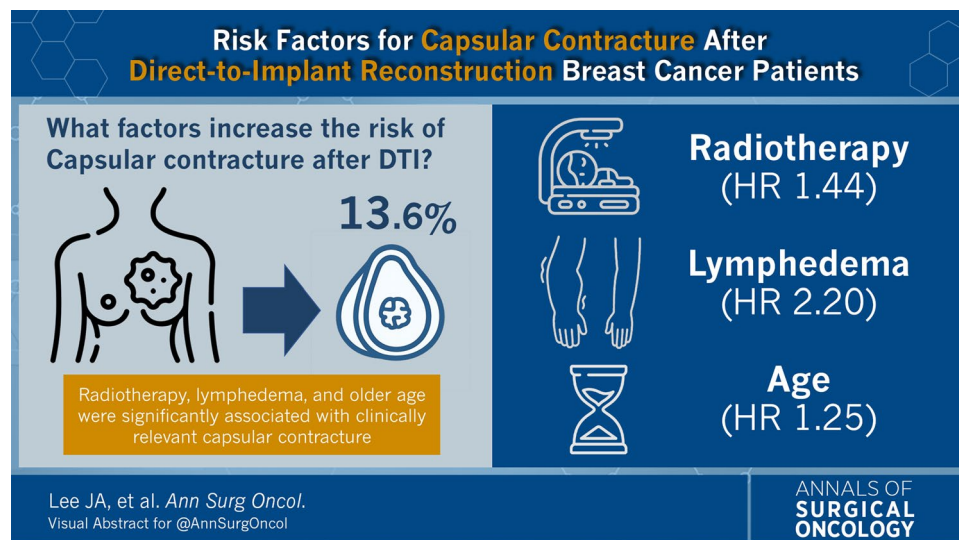
ASO Visual Abstract: Risk Factors and Incidence of Reoperation in Direct-to-Implant Breast Reconstruction Surgery Among Patients with Breast Cancer

Jin Ah Lee, MD¹, Hye Sun Lee, MS, PhD², Soyoung Jeon, MS, PhD², Dooreh Kim, MD¹, YoungJoo Lee, MD¹, Soo Yun Bae, MD, PhD¹, Woo-Chan Park, MD, PhD¹, Chang Ik Yoon, MD, PhD¹, and Jangyoun Choi, MD, PhD³

¹Division of Breast Surgery, Department of Surgery, Seoul St. Mary's Hospital, College of Medicine, The Catholic University of Korea, Seoul, Republic of Korea; ²Biostatistics Collaboration Unit, Yonsei University College of Medicine, Seoul, Republic of Korea; ³Department of Plastic and Reconstructive Surgery, Seoul St. Mary's Hospital, College of Medicine, The Catholic University of Korea, Seoul, Republic of Korea

This nationwide cohort study identified the incidence and risk factors for capsular contracture after direct-to-implant breast reconstruction in Korean patients with breast cancer,

highlighting patient- and treatment-related predictors associated with increased surgical burden (<https://doi.org/10.1245/s10434-025-18662-2>).



© Society of Surgical Oncology 2025

C. I. Yoon, MD, PhD
e-mail: fayn03@gmail.com; fayn03@catholic.ac.kr

J. Choi, MD, PhD
e-mail: jycprs@gmail.com

DISCLOSURE This study was supported by the National Research Foundation of Korea (NRF) grant funded by the Ministry of Education (NRF-2021R111A1A01049056). The authors declare no commercial or financial conflicts of interest related to this study.

Publisher's Note Springer Nature remains neutral with regard to jurisdictional claims in published maps and institutional affiliations.

Published online: 17 December 2025