



저작자표시-비영리-변경금지 2.0 대한민국

이용자는 아래의 조건을 따르는 경우에 한하여 자유롭게

- 이 저작물을 복제, 배포, 전송, 전시, 공연 및 방송할 수 있습니다.

다음과 같은 조건을 따라야 합니다:



저작자표시. 귀하는 원저작자를 표시하여야 합니다.



비영리. 귀하는 이 저작물을 영리 목적으로 이용할 수 없습니다.



변경금지. 귀하는 이 저작물을 개작, 변형 또는 가공할 수 없습니다.

- 귀하는, 이 저작물의 재이용이나 배포의 경우, 이 저작물에 적용된 이용허락조건을 명확하게 나타내어야 합니다.
- 저작권자로부터 별도의 허가를 받으면 이러한 조건들은 적용되지 않습니다.

저작권법에 따른 이용자의 권리는 위의 내용에 의하여 영향을 받지 않습니다.

이것은 [이용허락규약\(Legal Code\)](#)을 이해하기 쉽게 요약한 것입니다.

[Disclaimer](#)

**Combinatorial Therapeutic Effect of
Inhibitors of Aldehyde Dehydrogenase
and Mitochondrial Complex I, and the
Chemotherapeutic Drug, Temozolomide
against Glioblastoma Tumorspheres**

Hun Ho Park

Department of Medicine

The Graduate School, Yonsei University

**Combinatorial Therapeutic Effect of
Inhibitors of Aldehyde Dehydrogenase
and Mitochondrial Complex I, and the
Chemotherapeutic Drug, Temozolomide
against Glioblastoma Tumorspheres**

Directed by Professor Jong Hee Chang

The Doctoral Dissertation
submitted to the Department of Medicine,
the Graduate School of Yonsei University
in partial fulfillment of the requirements for the degree
of Doctor of Philosophy

Hun Ho Park

December 2020

This certifies that the Doctoral
Dissertation of Hun Ho Park is
approved.

Thesis Supervisor : Jong Hee Chang

Thesis Committee Member#1 : Seog-Gu Kang

Thesis Committee Member#2 : Se Hoon Kim

Thesis Committee Member#3: Soo-Youl Kim

Thesis Committee Member#4: Hye Jin Choi

The Graduate School
Yonsei University

December 2020

ACKNOWLEDGEMENTS

<TABLE OF CONTENTS>

ABSTRACT	1
I. INTRODUCTION	3
II. MATERIALS AND METHODS	4
1. Cell Culture and Reagents	4
2. Evaluation of ATP Levels and Cell Viability	5
3. Neurosphere Formation Assay	5
4. Invasion Assay	6
5. Charaterization of GBM Tumorspheres	6
6. Western Blot Analysis	6
7. Gene Expression Microarray Datasets and Analysis	7
8. Statistical Analysis	7
III. RESULTS	8
1. Optimization of Gossypol, Phenformin and TMZ Concentrations	8
2. Combination Therapy Inhibits Cell Proliferation and Energy Metabolism	8
3. Combination Therapy Suppresses Stemness	10
4. Combination Therapy Suppresses Invasiveness	11
5. Transcription Profiles following Combination Therapy	12
IV. DISCUSSION	14
V. CONCLUSION	16
REFERENCES	18
APPENDIX	23
ABSTRACT(IN KOREAN)	26

LIST OF FIGURES

Figure 1. Biological effects on GBM TSs after combination drug administration	9
Figure 2. Stemness evaluation of GBM TSs after combination drug administration	11
Figure 3. Invasiveness evaluation of GBM TSs after combination drug administration	12
Figure 4. Transcription profiles following combination drug administration	13

ABSTRACT

Combinatorial Therapeutic Effect of Inhibitors of Aldehyde Dehydrogenase and Mitochondrial Complex I, and the Chemotherapeutic Drug, Temozolomide against Glioblastoma Tumorspheres

Hun Ho Park

*Department of Medicine
The Graduate School, Yonsei University*

(Directed by Professor Jong Hee Chang)

Purpose Resident cancer cells with stem cell-like features induce drug tolerance, facilitating survival of glioblastoma (GBM). We previously showed that strategies targeting tumor bioenergetics present a novel emerging avenue for treatment of GBM. The objective of this study was to enhance the therapeutic effects of dual inhibition of tumor bioenergetics by combining temozolomide (TMZ).

Methods TMZ was combined with gossypol, an aldehyde dehydrogenase inhibitor and phenformin, a biguanide compound that depletes oxidative phosphorylation to block proliferation, stemness, and invasiveness of GBM tumorspheres (TSs). Biological effects of GBM TSs including ATP levels, cell viability, stemness, and invasiveness were evaluated after combination drug

administration.

Results Combination therapy with gossypol, phenformin and TMZ induced a significant reduction in ATP levels, cell viability, stemness, and invasiveness compared to TMZ monotherapy and dual therapy with gossypol and phenformin. Analysis of differentially expressed genes revealed up-regulation of genes involved in programmed cell death, autophagy, and protein metabolism and down-regulation of those associated with cell metabolism, cycle, and adhesion.

Conclusion Combination of TMZ with dual inhibitors of tumor bioenergetics may therefore present an effective strategy against GBM by enhancing therapeutic effects through multiple mechanisms of action.

Key words: aldehyde dehydrogenase; bioenergetics; glioblastoma; oxidative phosphorylation; temozolomide; tumorsphere

**Combinatorial Therapeutic Effect of Inhibitors of Aldehyde
Dehydrogenase and Mitochondrial Complex I, and the
Chemotherapeutic Drug, Temozolomide against
Glioblastoma Tumorspheres**

Hun Ho Park

*Department of Medicine
The Graduate School, Yonsei University*

(Directed by Professor Jong Hee Chang)

I. INTRODUCTION

Despite improved standards of care, the survival rate of patients with glioblastoma (GBM) remains poor.^{1,2} Surgery is the most effective treatment for complete resection, but unlike tumors of other organs, it is impossible to remove whole brain with tumors. Resident cancer cells with stem cell-like features and heterogeneity induce therapeutic tolerance and relapse, facilitating glioblastoma (GBM) survival and proliferation characterized by GBM tumorspheres (TSs).³⁻⁸ In view of the limitations of surgery alone, temozolomide (TMZ), an alkylating agent, in conjunction with postoperative radiation is employed as the standard of care for GBM. However, TMZ is insufficient for complete elimination of resistant GBM TSs. For these reasons, targeting the universal features of cancer cells is an emerging therapeutic strategy to overcome resistance to conventional cancer therapy and tumor recurrence.⁶⁻⁹ Modulation of cancer cell metabolism through depletion of

glucose and oxidative phosphorylation, the main source of tumor energy, is one such novel approach.^{10,11} In addition, combining several therapeutic agents to inhibit multiple energy pathways may present a means to induce synergistic activity against resistant cancer cells.¹²⁻¹⁵ Previous studies by our group showed that dual inhibition of glycolysis and oxidative phosphorylation could synergistically suppress GBM TSs.^{8,16-18} Metformin and phenformin are biguanides reported to induce energetic stress and glucose depletion by inhibiting mitochondrial complex I and oxidative phosphorylation.^{8,16-20} While phenformin has shown to display greater anti-cancer activity and tissue availability than metformin,^{20,21} its sole use has yielded disappointing results to date.²² Gossypol is a polyphenolic compound extracted from cottonseed known to exert anti-cancer effects by inhibiting aldehyde dehydrogenase (ALDH) and oxidative phosphorylation.^{23,24} Similar to phenformin, gossypol alone appears ineffective as a therapeutic agent for cancer.²⁵⁻²⁷

In the present study, we aimed to overcome the weaknesses and enhance the therapeutic effects of proven agents targeting tumor bioenergetics by combination with conventional chemotherapeutic agent. The biological effects of combination drug administration with gossypol, phenformin and TMZ compared to TMZ alone as well as gossypol and phenformin dual therapy on GBM TSs were evaluated.

II. MATERIALS AND METHODS

1. Cell Culture and Reagents

Two TS-forming GBM lines, U87 and TS13-64 were used for study. U87 spheres were generated from the U87MG cell line under TS culture conditions. The molecular markers of U87 cell line entailed no mutation of isocitrate dehydrogenase 1 and unmethylation of 06-methylguanine DNA

methyltransferase gene. Cells were cultured in TS complete medium composed of Dulbecco's modified Eagle's medium/F12 (Mediatech, Manassas, VA, US), 1xB27 (Invitrogen, San Diego, CA, US), 20 ng/mL basic fibroblast growth factor, and 20 ng/mL epidermal growth factor (Sigma-Aldrich, St. Louis, MO, US). TS-forming GBM cells (TS13-64) were established from fresh tissue specimens of a patient [14–18]. Detailed information of the tissue specimen entailed no mutation of isocitrate dehydrogenase 1, unmethylation of 06-methylguanine DNA methyltransferase gene, no loss of heterozygosity of chromosomes 1p and 19q, 20–30% positivity of p53, Ki-67 proliferation index of 40–50%, and mutation of epidermal growth factor receptor. The use of GBM TSs was approved by the Institutional Review Board of Severance Hospital, Yonsei University College of Medicine (4-2012-0212, 4-2014-0649) with written informed consent by the patient. All experiments were performed under TS culture condition. Gossypol and TMZ (MSD) were dissolved in dimethyl sulfoxide (DMSO), and phenformin (Sigma-Aldrich) in H₂O. The treatment concentrations were as follows: 250 μ M TMZ for mono treatment, 10 μ M gossypol and 10 μ M phenformin for dual treatment, and 10 μ M gossypol, 10 μ M phenformin and 250 μ M TMZ for combination treatment.

2. Evaluation of ATP Level and Cell Viability

Dispersed GBM TSs were seeded in 96-well plates at a density of 104 cells/well. ATP levels were measured using a CellTiter-Glo luminescent cell viability assay kit (Promega, Fitchburg, WI, US). A 1.0-fold ATP level was defined as the mean, normalized value in the control group. Cell viability was quantified using WST assay (Promega, Fitchburg, WI, US).

3. Neurosphere Formation Assay

Ten dissociated, single GBM TSs were seeded in 96-well plates and cultured for three weeks with TS complete medium that was replenished every week. Images were captured and analyzed using ToupView software (ToupTek Photonics, Zhejiang, China).

4. Invasion Assay

Each well of a 96-well plate was filled with mixed matrix composed of Matrigel, collagen type I (Corning Inc., Corning, NY, US), and Ts complete medium. U87 tumorsphere and TS13-64 cells grown as single spheroids were seeded inside the matrix prior to gelation. TS complete medium was added over the gelled matrix to prevent drying and the invasion area quantified as the occupied area at (72 h–0 h)/0 h.

5. Characterization of GBM Tumorspheres

TS formation was established from human GBM specimens as described previously.²⁸ GBM TSs used in the study were positive for markers of stemness, cluster of differentiation (CD) 133, and nestin (Abcam, Cambridge, UK) in immunocytochemistry. GBM TSs displayed evidence of neuroglial differentiation with expression of glial fibrillary acidic protein (GFAP) (Dako, Carpinteria, CA, US), myelin basic protein (MBP), neuronal nuclei (NeuN), and tubulin beta 3 (TUBB3) (Chemicon, Temecula, CA, US). GFAP and MBP could not be detected in the U87 cell line.

6. Western Blot Analysis

Cell lysates were separated via sodium dodecyl sulfate-polyacrylamide gel electrophoresis using 10% Tris-glycine gels. Protein bands were transferred to

nitrocellulose membranes and probed with antibodies against CD133, Nestin (Novus Biologicals, Littleton, CO, US), PDPN and Snail (Cell Signaling Technology, Beverly, MA, US), N-cadherin (R&D Systems), Zeb1 (Sigma-Aldrich), Twist, Oct3/4, and GAPDH (Santa Cruz Biotechnology). Detection was performed using horseradish peroxidase-conjugated IgG (Santa Cruz Biotechnology), in conjunction with Western Lightning Plus-enhanced chemiluminescence reagent (PerkinElmer, Waltham, MA, US). Images were captured using ImageQuant LAS 4000 mini (GE Healthcare Life Sciences, Little Chalfont, UK).

7. Gene Expression Microarray Datasets and Analysis

Total RNA from GBM TSs was extracted using a Qiagen RNeasy Plus Mini kit according to the manufacturer's protocol and loaded on the Illumina HumanHT-12 v4 Expression BeadChip column (Illumina, San Diego). Data were processed, transformed and normalized with the quantile normalization method using the R/Bioconductor lumi package.²⁹ Using GENE-E software, average linkage hierarchical clustering was performed with Pearson's correlation as a distance metric and expression levels depicted as heat maps. The functional annotation of DEGs (one-way ANOVA with Tukey's post hoc test; $P < 0.001$) was performed via over-representation analysis using GO Biological Process gene sets and visualized as dot plots with Bonferroni-adjusted P-value using the R/Bioconductor clusterProfiler package.³⁰

8. Statistical Analysis

Biological effects, stemness, and invasiveness of GBM TSs after combination drug administration (gossypol/phenformin and TMZ) compared to control,

TMZ monotherapy, and gossypol/phenformin dual therapy groups were evaluated using one-way ANOVA with Tukey's post hoc test. Average linkage hierarchical clustering was performed with Pearson's correlation as a distance metric. Statistical significance for functional annotation of DEGs was determined using the two-sided hypergeometric test and only nodes with Bonferroni-adjusted P values of ≤ 0.05 displayed. All statistical analyses were performed with SPSS software version 18.0 for Windows (SAS Institute, Inc., Chicago, IL, USA). Two-tailed P values ≤ 0.05 were considered statistically significant.

III. RESULTS

1. Optimization of Gossypol, Phenformin and TMZ Concentrations

Previously, we showed that gossypol (10 μM) and phenformin (10 μM) exert dual inhibitory biological effects without affecting cell viability [18]. The sub-lethal concentrations of gossypol and phenformin as well as TMZ, alone and combined, were re-established using the WST assay for sphere-cultured U87 and GBM TS (TS13-64) and according to our previous findings [14–16]. TMZ monotherapy (250 μM), and dual therapy with gossypol (10 μM) and phenformin (10 μM) exerted minimal effects on cell viability relative to control ($>50\%$). Combined treatment with gossypol (10 μM), phenformin (10 μM), and TMZ (250 μM) exerted significant synergistic effects on cell viability of sphere-cultured U87 and GBM TS (TS13-64).

2. Combination Therapy Inhibits Cell Proliferation and Energy Metabolism

TMZ monotherapy and dual therapy with gossypol and phenformin induced significant decrease in the proliferation of sphere-cultured U87 and GBM TS

(TS13-64) compared to the control group. Anti-proliferative effects were significantly enhanced with the combination of gossypol, phenformin and TMZ (Figure 1A). Marked decreases in ATP levels with each agent alone and in combination, led to subsequent changes in cell viability (Figure 1B). This finding confirms that the individual agents not only exert anti-proliferative effects through inhibition of cellular energy metabolism, but also that efficacy is enhanced with the combination therapy. We observed no significant differences in cell viability between TMZ monotherapy and gossypol/phenformin dual therapy. However, combination of both therapies induced significantly greater anti-proliferative effects than each agent alone. Clearly, metabolic perturbations and energy stress at the cellular level need to be addressed to improve the standard of care for GBM.^{8,16-18}

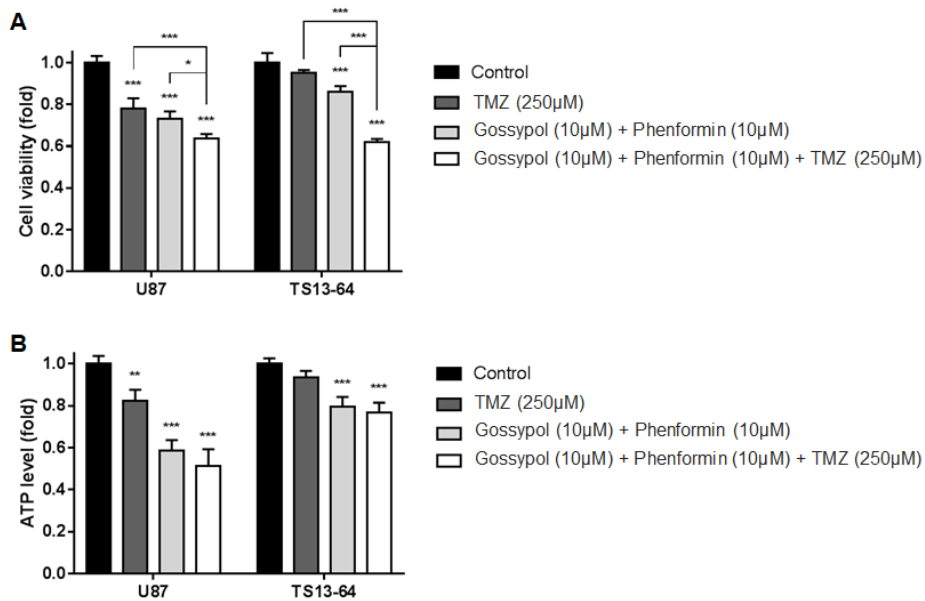


Figure 1. Biological effects on GBM TSs after combination drug administration of gossypol, phenformin and TMZ compared to control, TMZ monotherapy, and gossypol/phenformin dual therapy. (A) Cell viability and (B) ATP levels of U87 (n = 4) and TS13-64 (n = 4) were measured 72 h after combination drug therapy (mean ± SD; asterisks over each bar represent statistically significant differences compared to control; *p < 0.05, **p < 0.01, ***p < 0.001).

3. Combination Therapy Suppresses Stemness

Neurosphere formation assays were used to evaluate the effects of treatment on stemness of sphere-cultured U87 and GBM TS (TS13-64) in relation to changes in the gene expression profile. TMZ monotherapy, and gossypol/phenformin dual therapy exerted equivalent stemness inhibition effects, as demonstrated by the reduced proportion of sphere-positive wells (Figure 2A). Combined treatment of gossypol and phenformin with TMZ led to remarkable enhancement of anti-stemness effects by almost completely inhibiting neurosphere formation compared to each treatment alone (Figures 2B and 2C). Interestingly, expression of stemness-related markers, including CD133, nestin, PDPN, and Oct3/4 was considerably reduced expression by gossypol, phenformin and TMZ, both alone and combined, on western blots (Figure 2D and 2E). These results demonstrate that TMZ monotherapy and gossypol/phenformin dual therapy efficiently suppress stemness on their own and combining the two treatments enhances the therapeutic efficacy.

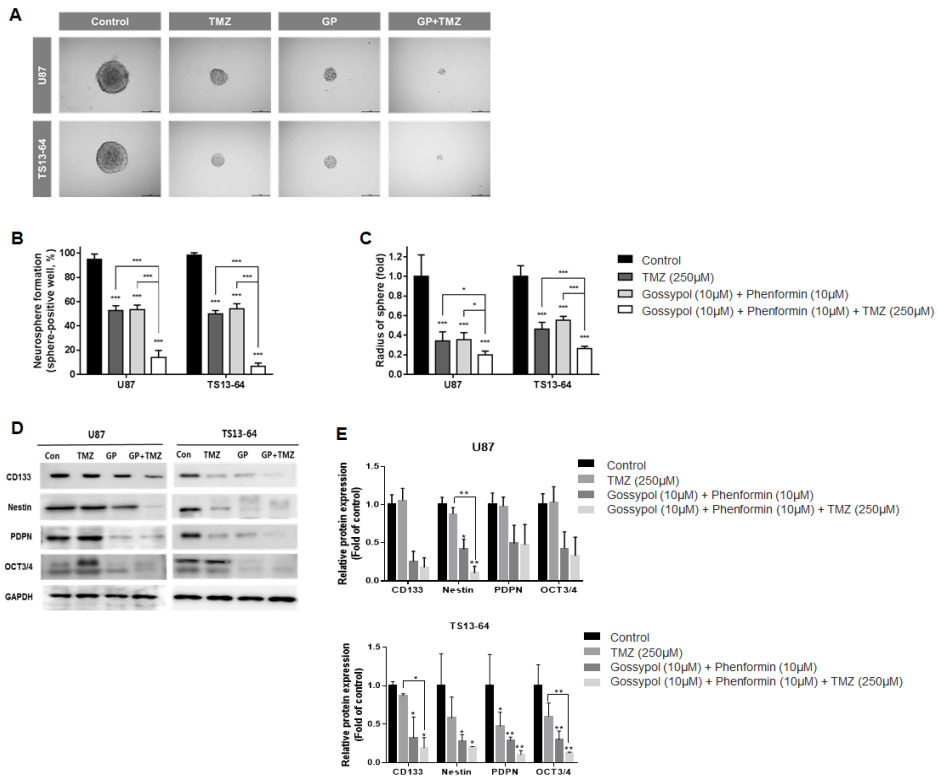


Figure 2. Stemness evaluation of GBM TSs after combination drug administration of gossypol, phenformin and TMZ compared to control, TMZ monotherapy, and gossypol/phenformin dual therapy. Stemness of U87 (n = 17) and TS13-64 (n = 27) was measured 3 weeks after combination drug therapy with the aid of neurosphere formation assays. (A) Stemness was captured using ToupView software (Toup Tek Photonics) and (B) quantified as a percentage of sphere-positive wells and (C) sphere radius (scale bar = 50 µm). (D) Level of protein related to stemness (CD 133, Nestin, PDPN, and Oct 3/4) were measured via western blot analysis. (E) Protein band intensities were quantified via densitometry. GAPDH was used as a loading control (mean ± SD; asterisks over each bar represent significant differences compared to control; *p < 0.05, **p < 0.01, ***p < 0.001).

4. Combination Therapy Suppresses Invasiveness

The invasive property of GBM TSs was evaluated using the collagen-based 3D invasion assays and quantified by assessing the area of radial migration of implanted GBM TSs into the collagen matrix. Both gossypol/phenformin and

TMZ, alone and in combination induced marked suppression of invasiveness of sphere-cultured U87 and GBM TS (TS13-64) (Figure 3A). Quantitative evaluation revealed that the anti-invasive effect of gossypol and phenformin combined with TMZ was more significant than that of each therapy alone (Figure 3B). Western blot analysis of mesenchymal transition- and invasion-related markers including N-cadherin, Snail, Twist, and Zeb1, revealed substantial decrease following treatment with gossypol/phenformin and TMZ, alone or combined (Figure 3C and 3D). Consistently, the efficacy of TMZ monotherapy and gossypol/phenformin dual therapy could be enhanced by combining the two therapies together.

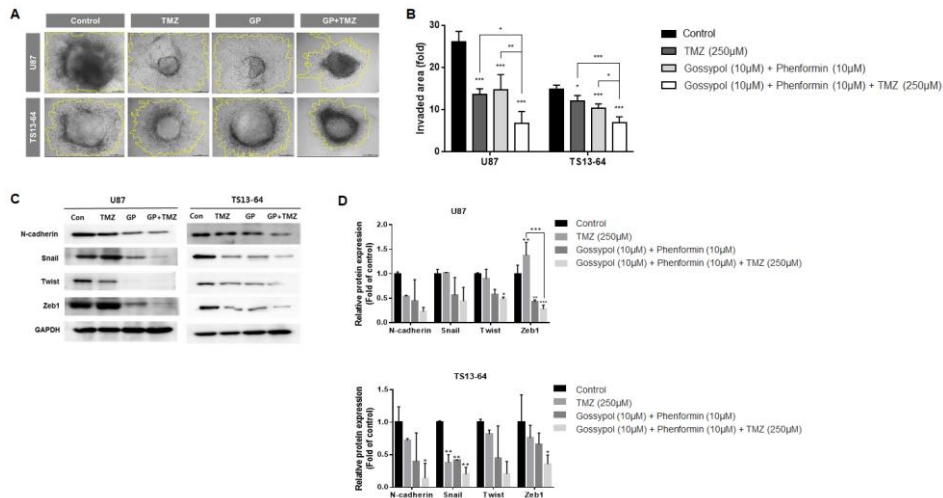


Figure 3. Invasiveness evaluation of GBM TSs after combination drug administration of gossypol, phenformin and TMZ compared to control, TMZ monotherapy, and gossypol/phenformin dual therapy. Invasiveness of U87 (n = 5) and TS13-64 (n = 5) was measured 72 h after combination drug administration using 3D invasion assays. (A and B) Invasiveness was captured using ToupView software (Toup Tek Photonics) and quantified by measuring the area occupied by invading cells (outlined in yellow, scale bar = 50 μm). (C) Expression levels of protein related to mesenchymal transition and invasiveness (N-cadherin, Snail, Twist, and Zeb1) were measured via western blot analysis. (D) Protein band intensities were quantified via densitometry. GAPDH was used as a loading control (mean ± SD; asterisks over each bar represent significant differences compared to control; *p < 0.05, **p < 0.01, ***p < 0.001).

5. Transcription Profiles following Combination Therapy

Microarrays were used to evaluate changes in gene expression profiles after treatment with gossypol, phenformin, and TMZ. Hierarchical clustering showed strong intragroup clustering and distinct expression patterns compared with controls (Figure 4A). Notably, stemness- and invasiveness-related genes were remarkably down-regulated by gossypol and phenformin treatment, and these effects were further enhanced by TMZ combination (Figure 4B). Functional annotation of differentially expressed genes (DEGs) using GO database revealed distinct enriched gene sets. Genes up-regulated in the combination group were related to programmed cell death, autophagy, and protein catabolism, whereas down-regulated genes were associated with cell cycle and migration, which were consistent with the previous findings (Figures 4C and 4D). These results suggest feasible action mechanisms of the combinatorial therapeutic regimen.

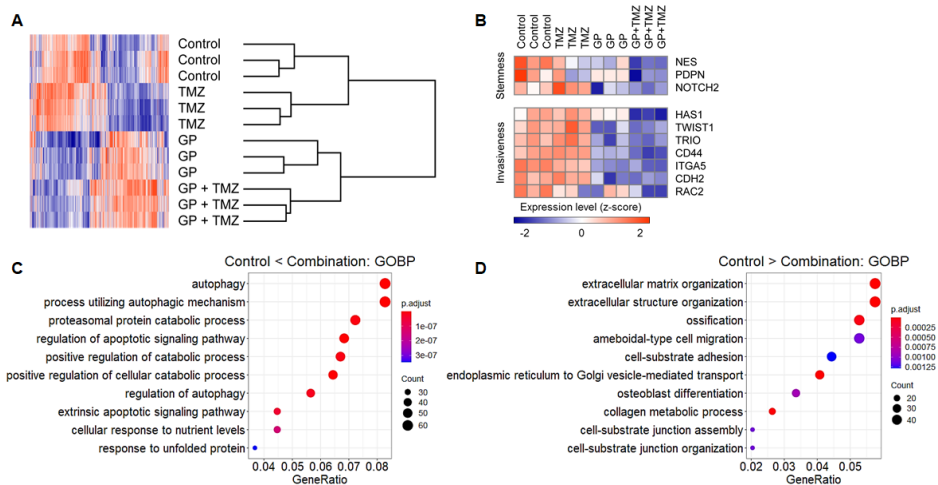


Figure 4. U87 cells were treated with gossypol, phenformin, and TMZ for 72 h, and gene expression profile was obtained using microarray. (A) For genes with average expression levels of top 30%, average linkage hierarchical clustering was performed with Euclidean distance as a distance metric, and expression levels were depicted as a heat map using GENE-E software. (B) Expression levels of stemness- and invasiveness-associated genes were displayed as a heat map. (C and D) Among 1,799 DEGs between control and combination groups, expression levels of 837 genes, which

were up-regulated in the combination group (C) and the expression levels of 962 genes, which were down-regulated in the combination group (D) were functionally annotated using GO terms.

IV. DISCUSSION

The intrinsic tendency of GBM to infiltrate normal brain tissue renders complete surgical resection of tumor an unattainable goal.³¹ Several adjuvant strategies have been proposed to overcome these limitations, but none have proved successful so far.³²⁻³⁴ Thus, adjuvant therapy targeting resident cancer cells is crucial for reversing poor survival rates. A significant subpopulation of GBM cancer cells that can survive conventional chemotherapy is proposed to possess stem cell-like features and heterogeneity.^{3,4,6-9} Therapeutic tolerance and relapse of surviving cancer cells is fueled by glycolysis and oxidative phosphorylation, known to serve as major suppliers of ATP for cancer cells.³⁵⁻³⁷ In view of these findings, the concept of modulating cancer metabolism by removing the energy source of tumor cells is an emerging therapeutic strategy.^{10,11} Combined treatment with several therapeutic agents could induce synergistic inhibition of energy pathways.¹²⁻¹⁵ However, successful clinical translation can only be achieved if the key molecules associated with cancer metabolism are identified for targeted therapy. Cancer cells utilize diverse nutrients, such as glucose and NADH, to fuel oxidative phosphorylation.^{35,36} Therefore, induction of general metabolic stress via depletion of glucose and NADH present a reasonable approach to provide a less favorable environment for the metabolically active tumor cells.^{10,11}

We previously demonstrated that dual inhibition of glycolysis and oxidative phosphorylation could exert a synergistic effect with drugs against GBM TSs.^{8,16-18} A newly designed biguanide (HL 156A) combined with TMZ,¹⁶ metformin combined with 2-deoxyglucose,¹⁷ and phenformin combined with gossypol,¹⁸ synergistically reduced ATP levels, cell viability, stemness, and

invasiveness of GBM TSs. In the present study, we extended our previous research and examined the therapeutic effects of dual inhibition of glycolysis and oxidative phosphorylation with gossypol and phenformin in combination with the chemotherapeutic drug, TMZ. Biguanides such as metformin and phenformin are inhibitors of mitochondrial complex I, known to suppress cancer cell migration and proliferation.^{16-20,38} Activated glycolytic metabolism is maintained via active glycogen synthase in GBM TSs, which could be down regulated with inhibitors of gluconeogenesis targeting both mitochondrial and glycolytic pathways.^{38,39} However, the stand alone utility of biguanides for targeting cancer metabolism is limited and their therapeutic effects against other cancers^{13,22,23} and GBM TSs¹⁴⁻¹⁸ could only be enhanced by combination with other agents. Phenformin was selected over metformin in this study owing to its superior bioavailability, potent inhibition of mitochondrial complex I and higher CSF concentration.¹⁹⁻²¹ The hydrophilic nature of metformin facilitates cellular entry specifically through organic cation transporters abundant in hepatocytes, but not elsewhere.²¹ Gossypol is a naturally derived ALDH inhibitor that can suppress NADH, which fuels oxidative phosphorylation critical for metabolism of cancer cells.^{23,24} Several isoforms of ALDH have been highlighted as potential drug targets, considering the elevated ALDH expression in GBM TSs.^{18,37} However, similar to biguanides, gossypol on its own is ineffective against GBM TSs^{18,27} and other cancers.^{25,26} TMZ, a well-known conventional chemotherapeutic agent, is a crucial component of the standard of care for GBM. Unfortunately, even among TMZ-responsive patients, therapeutic tolerance and relapse can develop with consequent mortality.^{1,2} According to our results, TMZ combined with gossypol and phenformin significantly and synergistically suppressed ATP levels, cell viability, stemness, and invasiveness of GBM TSs relative to treatment alone. Gossypol and phenformin induced superior ATP depletion and reduction of cell viability than TMZ while TMZ induced superior suppression of stemness and invasiveness of GBM TSs than gossypol and

phenformin, albeit to a non-significant extent. These results support the implementation of combined therapy to overcome the weakness of stand-alone treatment and enhance the therapeutic effects of each agent in a synergistic manner. The synergistic effects of combination therapy were further supported by the functional annotation of DEGs, showing up regulation of genes associated with programmed cell death, autophagy and protein metabolism and down regulation of genes involved in cell metabolism, cycle and adhesion. The significant reduction of stemness-, mesenchymal transition- and invasion-related markers observed via western blot confirmed the above findings. The action mechanisms of gossypol/phenformin dual therapy and TMZ monotherapy are complementary, whereby the therapeutic tolerance is minimized and the synergistic efficacy maximized against GBM TSs. We anticipate to validate the results of this study through an in vivo experiment with mouse orthotopic xenograft models. The significance of the forthcoming experiments is bright considering the fact that radiotherapy could also be combined to enhance the therapeutic effects of our combinatorial therapeutic regimen.

V. CONCLUSION

Cancer stem cells (CSCs) are responsible for therapeutic tolerance and relapse of GBM TSs and modulation of cancer metabolism. Inhibitory effects on stemness may therefore serve as a promising therapeutic strategy [5–8]. Several reports have implicated a specific subpopulation of CSCs in invasiveness of surviving cancer cells.^{41,42} However, direct evidence linking between CSCs and invasiveness is still lacking.⁴³ Moreover, limited information is available on GBM-specific stem cell surface markers and further research is warranted to identify potential therapeutic targets.⁴⁴ Data from the current study support our previous finding that dual inhibition of tumor bioenergetics can be effectively

combined with established standard treatments. We conclude that dual inhibition of glycolysis and oxidative phosphorylation with gossypol and phenformin in combination with the chemotherapeutic drug, TMZ, presents a novel therapeutic approach against therapeutic tolerance and relapse of GBM.

REFERENCES

1. Stupp R, Hegi ME, Mason WP, van den Bent MJ, Taphoorn MJ, Janzer RC, et al. European Organisation for Research and Treatment of Cancer Brain Tumour and Radiation Oncology Groups; National Cancer Institute of Canada Clinical Trials Group. Effects of radiotherapy with concomitant and adjuvant temozolomide versus radiotherapy alone on survival in glioblastoma in a randomized phase III study: 5-year analysis of the EORTC-NCIC trial. *Lancet Oncol* 2009;10(5):459–66.
2. Stupp R, Mason WP, van den Bent MJ, Weller M, Fisher B, Taphoorn MJ, et al. European Organisation for Research and Treatment of Cancer Brain Tumor and Radiotherapy Groups; National Cancer Institute of Canada Clinical Trials Group. Radiotherapy plus concomitant and adjuvant temozolomide for glioblastoma. *N Engl J Med* 2005;352(10):987–96.
3. Jackson M, Hassiotou F, Nowak A. Glioblastoma stem-like cells: at the root of tumor recurrence and a therapeutic target. *Carcinogenesis* 2015;36(2):177–85.
4. Auffinger B, Spencer D, Pytel P, Ahmed AU, Lesniak MS. The role of glioma stem cells in chemotherapy resistance and glioblastoma multiforme recurrence. *Expert Rev Neurother* 2015;15(7):741–52.
5. Kang SG, Cheong JH, Huh YM, Kim EH, Kim SH, Chang JH. Potential use of glioblastoma tumorsphere: clinical credentialing. *Arch Pharm Res* 2015;38(3):402–7.
6. Lee JH, Lee JE, Kahng JY, Kim SH, Park JS, Yoon SJ, et al. Human glioblastoma arises from subventricular zone cells with low-level driver mutations. *Nature* 2018;560:243–247.
7. Yoon SJ, Park J, Jang DS, Kim HJ, Lee JH, Jo E, et al. Glioblastoma cellular origin and the firework pattern of cancer genesis from the subventricular zone. *J Korean Neurosurg Soc* 2020;63:26–33.

8. Lim EJ, Kim S, Oh Y, Suh Y, Kaushik N, Lee JH, et al. Crosstalk between GBM cells and mesenchymal stemlike cell promotes the invasiveness of GBM through the C5a/p38/ZEB1 axis. *Neuro Oncol* 2020;22:1452–1462.
9. Kim SY. Cancer metabolism: targeting cancer universality. *Arch Pharm Res* 2015;38:299–301.
10. Bobrovnikova-Marjon E, Hurov JB. Targeting metabolic changes in cancer: novel therapeutic approaches. *Annu Rev Med* 2014;65:157–170.
11. Kim SY. Cancer metabolism: strategic diversion from targeting cancer drivers to targeting cancer suppliers. *Biomol Ther (Seoul)* 2015;23:99–109.
12. Cheng G, Zielonka J, McAllister D, Tsai S, Dwinell MB, Kalyanaraman B. Profiling and targeting of cellular bioenergetics: inhibition of pancreatic cancer cell proliferation. *Br J Cancer* 2014;111:85–93.
13. Sahra IB, Tanti J-F, Bost F. The combination of metformin and 2-deoxyglucose inhibits autophagy and induces AMPK dependent apoptosis in prostate cancer cells. *Autophagy* 2010;6:670–671.
14. Jeong H, Park J, Shim JK, Lee JE, Kim NH, Kim HS, et al. Combined treatment with 2'-hydroxycinnamaldehyde and temozolomide suppresses glioblastoma tumorspheres by decreasing stemness and invasiveness. *J Neurooncol* 2019;143:69–77.
15. Oh HC, Shim JK, Park J, Lee JH, Choi RJ, Kim NH, et al. Combined effects of niclosamide and temozolomide against human glioblastoma tumorspheres. *J Cancer Res Clin Oncol* 2020;146:2817–2828.
16. Choi J, Lee JH, Koh I, Shim JK, Park J, Jeon JY, et al. Inhibiting stemness and invasive properties of glioblastoma tumorsphere by combined treatment with temozolomide and a newly designed biguanide (HL156A). *Oncotarget* 2016;7:65643–65659.
17. Kim EH, Lee JH, Oh Y, Koh I, Shim JK, Park J, et al. Inhibition of glioblastoma tumorspheres by combined treatment with 2-deoxyglucose and metformin. *Neuro Oncol* 2017;19:197–207.

18. Park J, Shim JK, Kang JH, Choi J, Chang JH, Kim SY, et al. Regulation of bioenergetics through dual inhibition of aldehyde dehydrogenase and mitochondrial complex I suppresses glioblastoma tumorshperes. *Neuro Oncol* 2018;20:954–965.
19. Pollak M. Potential applications for biguanides in oncology. *J Clin Invest* 2013;123:3693–3700.
20. Owen MR, Doran E, Halestrap AP. Evidence that metformin exerts its anti-diabetic effects through inhibition of complex 1 of the mitochondrial respiratory chain. *Biochem J* 2000;348:607–614.
21. Pernicova I, Korbonits M. Metformin—mode of action and clinical implications for diabetes and cancer. *Nat Rev Endocrinol* 2014;10:143–156.
22. Shackelford DB, Abt E, Gerken L, Vasquez DS, Seki A, Leblanc M, et al. LKB1 inactivation dictates therapeutic response of non-small cell lung cancer to the metabolism drug phenformin. *Cancer Cell* 2013;23:143–158.
23. Kang JH, Lee SH, Lee JS, Nam B, Seong TW, Son J, et al. Aldehyde dehydrogenase inhibition combined with phenformin treatment reversed NSCLC through ATP depletion. *Oncotarget* 2016;7:49397–49410.
24. Koppaka V, Thompson DC, Chen Y, Ellermann M, Nicolaou KC, Juvonen RO, et al. Aldehyde dehydrogenase inhibitors: a comprehensive review of the pharmacology, mechanism of action, substrate specificity, and clinical application. *Pharmacol Rev* 2012;64:520–539.
25. Van Poznak C, Seidman AD, Reidenberg MM, Moasser MM, Sklarin N, Van Zee K, et al. Oral gossypol in the treatment of patients with refractory metastatic breast cancer: a phase I/II clinical trial. *Breast Cancer Res Treat* 2001;66:239–248.
26. Ready N, Karaseva NA, Orlov SV, Luft AV, Popovych O, Holmlund JT, et al. Double-blind, placebo-controlled, randomized phase 2 study of the proapoptotic agent AT-101 plus docetaxel, in second-line non-small cell lung cancer. *J Thorac Oncol* 2011;6:781–785.

27. Bushunow P, Reidenberg MM, Wasenko J, Winfield J, Lorenzo B, Lemke S, et al. Gossypol treatment of recurrent adult malignant gliomas. *J Neurooncol* 1999;43:79–86.
28. Kong BH, Park NR, Shim JK, Kim BK, Shin HJ, Lee JH, et al. Isolation of glioma cancer stem cells in relation to histological grades in glioma specimens. *Childs Nerv Syst* 2013;29:217–229.
29. Du P, Kibbe WA, Lin SM. Lumi: a pipeline for processing Illumina microarray. *Bioinformatics* 2008;24:1547–1548.
30. Yu G, Wang LG, Han Y, He QY. ClusterProfiler: an R package for comparing biological themes among gene clusters. *OMICS* 2012;16:284–287.
31. Tanahashi K, Natsume A, Ohka F, Momota H, Kato A, Motomura K, et al. Assessment of tumor cells in a mouse model of diffuse infiltrative glioma by Raman spectroscopy. *Biomed Res Int* 2014;2014:860241.
32. Thomas AA, Brennan CW, DeAngelis LM, Omuro AM. Emerging Therapies for Glioblastoma. *JAMA Neurol* 2014;71:1437–1444.
33. Chinot OL, Wick W, Mason W, Henriksson R, Saran F, Nishikawa R, et al. Bevacizumab plus radiotherapy-temozolomide for newly diagnosed glioblastoma. *N Engl J Med* 2014;370:709–722.
34. Gilbert MR, Dignam JJ, Armstrong TS, Wefel JS, Blumenthal DT, Vogelbaum MA, et al. A randomized trial of bevacizumab for newly diagnosed glioblastoma. *N Engl J Med* 2014;370:699–708.
35. Schulze A, Harris AL. How cancer metabolism is tuned for proliferation and vulnerable to disruption. *Nature* 2012;491:364–373.
36. Zu XL, Guppy M. Cancer metabolism: facts, fantasy, and fiction. *Biochem Biophys Res Commun* 2004;313:459–465.
37. Warburg O, Wind F, Negelein E. The metabolism of tumors in the body. *J Gen Physiol* 1927;8:519–530.
38. Bao B, Wang Z, Ali S, Ahmad A, Azmi AS, Sarkar SH, et al. Metformin inhibits cell proliferation, migration and invasion by attenuating CSC function

mediated by deregulating miRNAs in pancreatic cancer cells. *Cancer Prev Res (Phila)* 2012;5:355–364.

39. Beckner ME, Gobbel GT, Abounader R, Burovic F, Agostino NR, Laterra J, et al. Glycolytic glioma cells with active glycogen synthase are sensitive to PTEN and inhibitors of PI3K and gluconeogenesis. *Lab Invest* 2005;85:1457–1470.

40. Nakano I. Stem cell signature in glioblastoma: therapeutic development for a moving target. *J Neurosurg* 2015;122:324–330.

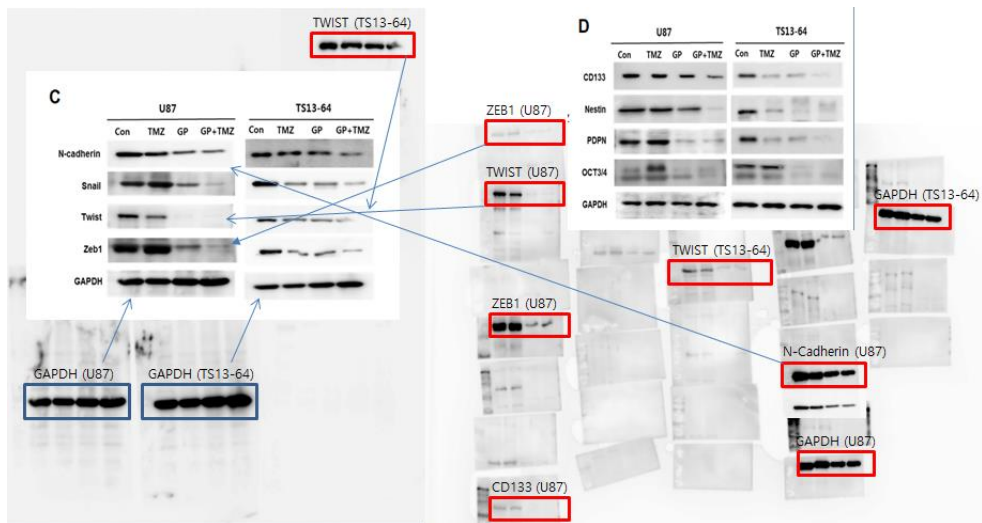
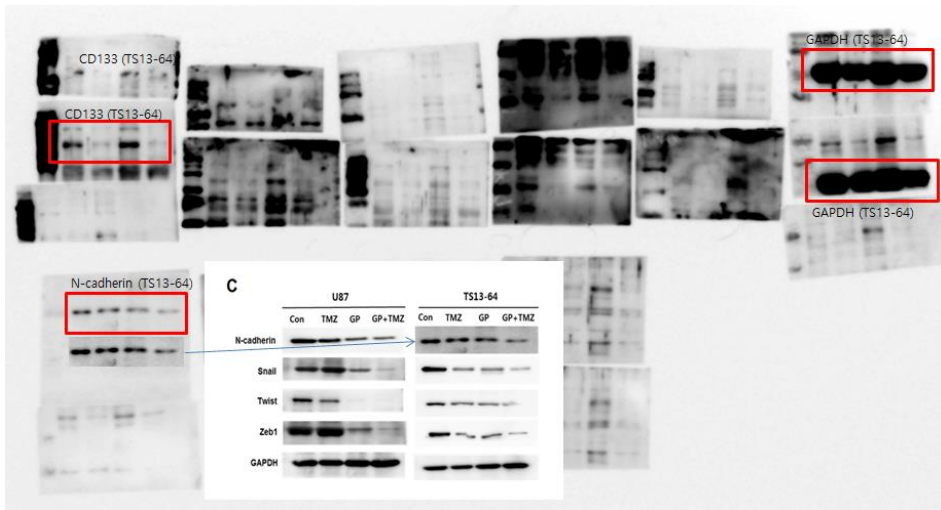
41. Korkaya H, Paulson A, Iovino F, Wicha MS. HER2 regulates the mammary stem/progenitor cell population driving tumorigenesis and invasion. *Oncogene* 2008;27:6120–6130.

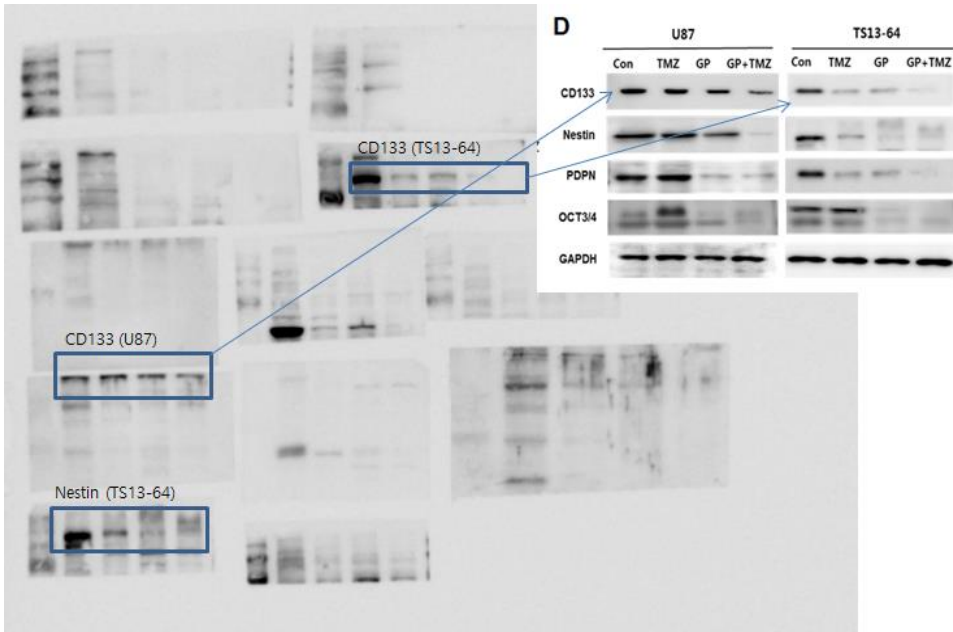
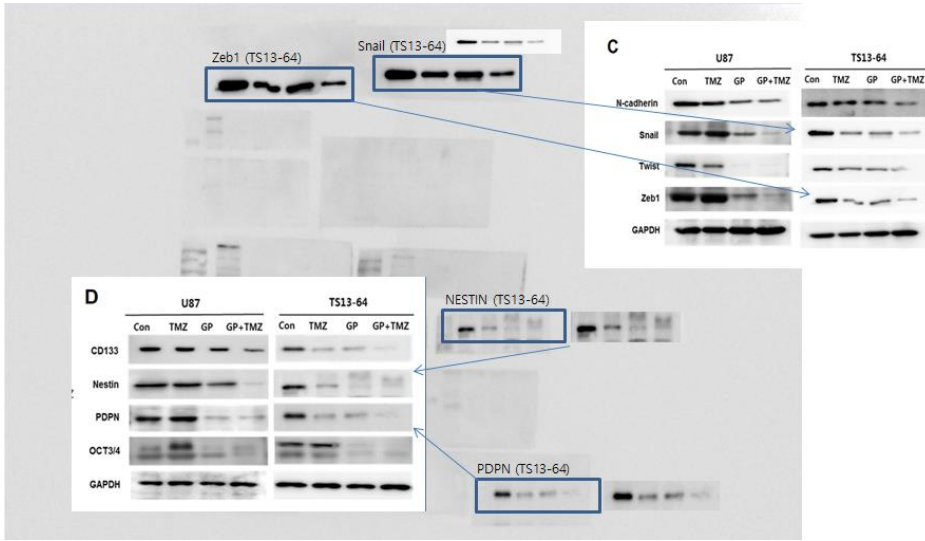
42. Wicha MS, Liu S, Dontu G. Cancer stem cells: an old idea—a paradigm shift. *Cancer Res* 2006;66:1883–1890.

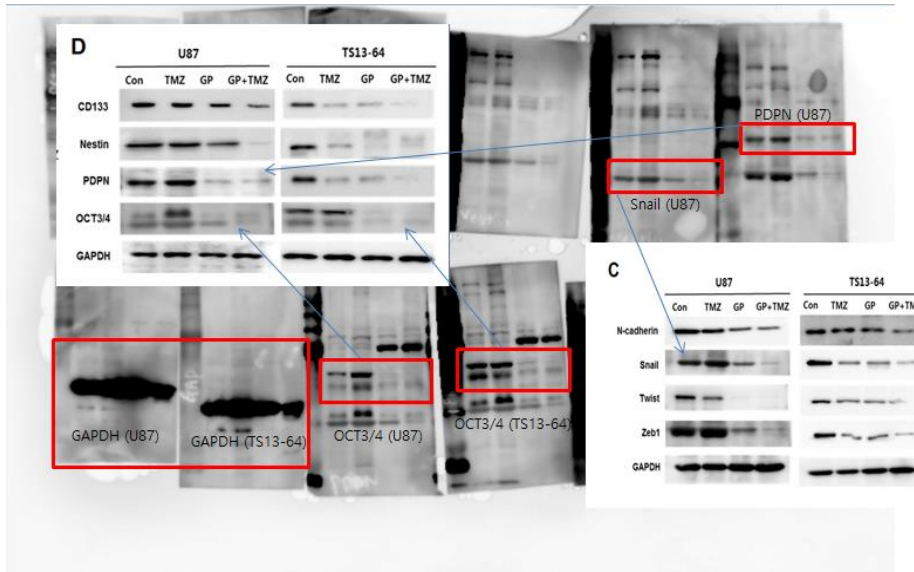
43. Ortensi B, Setti M, Osti D, Pelicci G. Cancer stem cell contribution to glioblastoma invasiveness. *Stem Cell Res Ther* 2013;4:18.

44. Jordan CT. Cancer stem cells: controversial or just misunderstood? *Cell Stem Cell* 2009;4:203–205.

APPENDIX







ABSTRACT (IN KOREAN)

교모세포종 에너지대사 차단 및 테모달 표준항암제의
병합요법을 통한 종양 세포 억제

지도교수 장중희

연세대학교 대학원 의학과

박 현 호

목적

줄기 세포-유사 특징을 갖는 암세포는 치료 내성을 유도하여 교모세포종 (GBM)이 생존하고 증식 할 수 있게 함. 이전 연구를 통해 포도당과 산화성 인산화를 고갈시킴으로써 종양 생체 에너지를 공략하는 것이 효과적이고 혁신적인 치료 전략 일 수 있음을 밝힘. 본 연구의 목적은 표준 항암치료약제인 테모달(TMZ)을 추가함으로써 종양 생체 에너지의 이중 억제 치료 효과를 향상시키고자 하는 것임.

연구방법

TMZ는 알데히드 탈수소 효소 억제제인 고시폴(gossypol)과 산화 인산화를 고갈시키는 비구아나이드 화합물인 펜포민(phenformin)과 결합하여 GBM 종양구(TSS)의 증식, 줄기성 및 침습성을 차단함. In-vitro에서 ATP 양, 세포 생존력, 줄기성 및 침습성을 포함하는

GBM TS의 생물학적 효과를 3중 약물을 투여 후 측정함. In-vivo에서 쥐를 이용한 이중 이식 모델을 통해 생존을 포함한 치료 효과를 조사함.

결과

고시폴, 펜포르민 및 TMZ를 이용한 3중 요법은 TMZ 단일 요법과 비교하여 ATP 양, 세포 생존력, 줄기성 및 침습성이 현저히 감소한 것으로 나타났으며 고시폴 및 펜포르민 이중 요법에 비해 현저한 감소를 보였다. 유전자 분석은 프로그램을 토대로 세포 사멸, 자가포식, 단백질 대사가 증가하였으며 세포 대사, 세포 주기 및 부착은 감소한 것으로 나타남. 3중 요법은 또한 TMZ 단일 요법 및 고시폴 및 펜포르민 이중 요법에 비해 이중 이식 모델의 생존을 유의하게 연장시켰음.

결론

TMZ와 종양 생체 에너지의 이중 억제제의 조합은 GBM에 대한 치료 효과를 상승시킬 수 있는 혁신적인 표적 요법이 될 가능성을 제시함.

핵심되는 말: 알데히드 탈수소 효소; 생체에너지대사; 교모세포종; 산화성 인산화; 테모달; 종양구