

Efficacy and Safety Evaluation of Human Growth Hormone Therapy in Patients with Idiopathic Short Stature in Korea – A Randomised Controlled Trial

Min Ho Jung,¹ Byung-Kyu Suh,² Cheol Woo Ko,³ Kee-Hyoung Lee,⁴ Dong-Kyu Jin,⁵ Han-Wook Yoo,⁶ Jin Soon Hwang,⁷ Woo Yeong Chung,⁸ Heon-Seok Han,⁹ Vinay Prusty¹⁰ and Ho-Seong Kim¹¹

1. The Catholic University of Korea, Yeouido St. Mary's Hospital, Seoul, South Korea; 2. The Catholic University of Korea, Seoul St. Mary's Hospital, Seoul, South Korea; 3. Kyungpook National University Hospital, Daegu, South Korea; 4. Korea University Anam Hospital, Seoul, South Korea; 5. Samsung Medical Center, Sung Kyun Kwan University, Seoul, South Korea; 6. Asan Medical Center, Seoul, South Korea; 7. Ajou University Hospital, Suwon, South Korea; 8. Inje University Busan Paik Hospital, Busan, South Korea; 9. Chungbuk National University Hospital, Chungbuk National University College of Medicine, Cheongju, South Korea; 10. Novo Nordisk Pharma Gulf FZ-LLC, Dubai, United Arab Emirates; 11. Severance Hospital, Yonsei University Health System, Seoul, South Korea

Background: This trial evaluated the efficacy and safety of growth hormone (GH) therapy (Norditropin®; Novo Nordisk, Bagsværd, Denmark) in paediatric patients with idiopathic short stature (ISS) in Korea. **Methods:** This was an open-label, parallel-group, multicentre, interventional trial (ClinicalTrials.gov identifier: NCT01778023). Pre-pubertal patients (mean age 6.2 years; height, 107.1 cm) were randomised 2:1 to 12 months' GH treatment (0.469 mg/kg/week; group A, n=36) or 6 months untreated followed by 6 months' GH treatment (group B, n=18). Safety analysis was based on adverse events (AEs) in all GH-treated patients. **Results:** After 6 months, height velocity (Ht-V), change in both height standard deviation score (Ht-SDS) and insulin-like growth factor 1 (mean difference [95% confidence interval {CI}]: 5.15 cm/year [4.09, 6.21]; 0.57 [0.43, 0.71]; 164.56 ng/mL [112.04, 217.08], respectively; all p<0.0001) were greater in group A than in group B. Mean difference in Ht-V for 0–6 months versus 6–12 months was 2.80 cm/year (95% CI 1.55, 4.04) for group A and -4.60 cm/year (95% CI -6.12, -3.09; both p<0.0001) for group B. No unexpected AEs were reported. **Conclusions:** During the first 6 months, height was significantly increased in GH-treated patients versus untreated patients with ISS. Safety of GH was consistent with the known safety profile.

Keywords

Human growth hormone, short stature, idiopathic, clinical trial

Disclosures: Heon-Seok Han received clinical research funding from Novo Nordisk. Vinay Prusty was an employee of Novo Nordisk Pharma Korea Ltd at the time of the study. Min Ho Jung, Byung-Kyu Suh, Cheol Woo Ko, Kee-Hyoung Lee, Dong-Kyu Jin, Han-Wook Yoo, Jin Soon Hwang, Woo Yeong Chung and Ho-Seong Kim have no financial or non-financial relationships or activities to declare in relation to this article.

Acknowledgements: The authors thank Mogens Gisselbaek, Lars Nordholm and Natasa Savic (Novo Nordisk) for their review and input to the manuscript. Medical writing and submission support were provided by Penny Butcher and Daria Renshaw of Watermeadow Medical, funded by Novo Nordisk Health Care AG. Data from this study were presented as a poster at the Endocrine Society (ENDO) 98th Annual Meeting and Expo, 1–4 April 2016, Boston, MA, USA.

Authors' Contributions: All of the authors were study investigators at the study sites so were equally involved in the running of the trial, acquisition of data and reviewing the manuscript during development. All authors read and approved the final manuscript for submission. The datasets used and/or analysed during the current study are available from the corresponding author on reasonable request.

Review Process: Double-blind peer review.

Compliance with Ethics: All procedures were followed in accordance with the responsible committee on human experimentation and with the Helsinki Declaration of 1975 and subsequent revisions. Informed consent was received from the patients involved in this study.

Authorship: All named authors meet the criteria of the International Committee of Medical Journal Editors for authorship for this manuscript, take responsibility for the integrity of the work as a whole and have given final approval for the version to be published.

Access: This article is freely accessible at touchENDOCRINOLOGY.com © Touch Medical Media 2020.

Received: 21 March 2019 **Accepted:** 7 July 2019 **Published Online:** 15 October 2019

Citation: *European Endocrinology*. 2020;16(1):54–9

Corresponding Author: Ho-Seong Kim, Severance Hospital, Yonsei University Health System, 50-1 Yonsei-ro, Seodaemun-gu, Seoul 120-752, South Korea. E: kimho@yuhs.ac

Support: This trial was sponsored by Novo Nordisk Pharma Korea, Ltd. Novo Nordisk was responsible for preparing the protocol, providing clinical trial supplies, monitoring the trial, supervising activities of the clinical services vendor of electronic data capture system, central lab, statistical analysis, data management and medical writing, ensuring smooth running of the trial and appropriate safety surveillance. No funding was received in the publication of this article.

Growth hormone (GH) is approved in children to treat growth failure in several indications including GH deficiency, Turner syndrome and short children born small for gestational age,¹ and is approved in the USA but not in Europe for the treatment of idiopathic short stature (ISS).² ISS describes short children with normal GH secretion, with height >2 standard deviations (SD) below the corresponding mean height for a given age, sex, and population, in whom no identifiable disorder is present.^{3,4} ISS may be familial, in which the child is short compared with the reference population but remains within the range of target height based on parental height, or non-familial, in which the child is short both in comparison with the reference population and the target height based on parental height.⁵ GH therapy in children with ISS may be effective in reducing the deficit in height in childhood and improving adult height.³ Data on the safety of GH therapy in patients from the USA with ISS suggest that the safety profile of GH is similar to that reported in other GH-treated indications and is not associated with any new safety concerns.⁶

The aim of this trial was to evaluate the efficacy and safety of recombinant human GH (Norditropin® NordiLet®; Novo Nordisk, Bagsværd, Denmark) therapy in paediatric patients with ISS in Korea. This prospective trial was conducted for registration purposes to seek approval of GH for the treatment of ISS in paediatric patients in Korea.

Materials and methods

Trial design

The trial design is shown in *Supplementary Figure 1*. This trial was conducted in accordance with the Declaration of Helsinki⁷ and International Conference of Harmonisation Good Clinical Practice Guideline.⁸ Written informed consent was obtained from patients' parents or legally acceptable representatives before any trial-related activities. The trial was conducted at 10 sites in Korea. For each investigational site, the adequacy of the research facility to execute the

Table 1: Baseline characteristics

	Group A (n=36)	Group B (n=15)	Total (n=51)
Male, n (%)	19 (52.8)	9 (60.0)	28 (54.9)
Female, n (%)	17 (47.2)	6 (40.0)	23 (45.1)
Mean age, years (SD)	6.3 (1.5)	5.9 (1.2)	6.2 (1.5)
Mean height, cm (SD)	107.7 (8.7)*	105.8 (7.5) [†]	107.1 (8.3) [‡]
Mean Ht-SDS (SD)	-2.4 (0.4)*	-2.2 (0.3) [†]	-2.3 (0.3) [‡]
Mean weight, kg (SD)	17.8 (3.1)*	16.3 (2.8) [†]	17.4 (3.0) [‡]
Male – mean testicular volume [§] , mL (SD) [n]	2.1 (1.3) [19]	1.7 (1.0) [9]	2.0 (1.2) [28]
Female – breast development stage [§] 1, n (%)	17 (100)	6 (100)	23 (100)
Mean IGF-1, ng/mL (SD)	135.9 (64.1)	111.0 (33.3)	128.6 (57.6)
Mean IGFBP-3, µg/mL (SD)	3.5 (0.9)	3.2 (0.5)	3.4 (0.8)

Based on the full analysis set. *n=32, [†]n=15, [‡]n=47.

[§] Pubertal stage (Tanner)

Ht-SDS = height standard deviation score; IGF-1 = insulin-like growth factor 1; IGFBP-3 = insulin-like growth factor-binding protein 3; SD = standard deviation.

protocol requirements was confirmed by a monitor and the Institutional Review Boards of each site before site initiation and any trial activities. The protocol (ClinicalTrials.gov identifier: NCT01778023; retrospectively registered 24 January 2013), the protocol amendments, the consent form, and the subject information sheet were reviewed and approved according to local regulations by the Ministry of Food and Drug Safety, and by an independent ethics committee and/or Institutional Review Board. This trial is the first of its kind for Norditropin worldwide, with the purpose of attaining a label extension for its use in the indication of ISS.

This was a 12-month, open-label, randomised, parallel-group, multicentre, interventional trial. Patients were randomised 2:1 to a 12-month GH-treatment period (group A) or a 6-month no-treatment period followed by a 6-month GH treatment period (group B). The randomisation was performed by an external contract research organisation. The GH dosage used in this trial was 0.469 mg/kg/week, 7 days per week, administered subcutaneously in the evening (equivalent to a daily dose of 67 µg/kg/day). The GH dose selected in this trial was chosen based on the approved GH dose range for short patients born small for gestational age⁹ due to the similarities in growth characteristics between patients with ISS and short patients born small for gestational age.¹⁰ The sample size was determined based on a 2:1 randomisation scheme with a significance level of 5% and power of 80%, and 24 completers for group A and 12 completers for group B; on the assumption that 30% of patients would withdraw from the trial, 36 patients were randomised to group A and 18 to group B.

There were six scheduled visits to the clinic (*Supplementary Figure 1*). At the first visit, patients were screened for eligibility. At visit 2, occurring between 1 and 21 days after visit 1, GH treatment for group A was initiated. Patients attended three interim visits at approximately 3, 6 and 9 months (each ± 7 days) after visit 2. At visit 4 (6 months after visit 2), GH treatment was initiated for group B. Visit 6, at the end of the trial, was attended approximately 12 months (± 7 days) after visit 2.

Patients

To be eligible for participation in this trial, patients were required to meet all inclusion criteria and none of the exclusion criteria (*Supplementary Table 1*). Key inclusion criteria included pre-pubertal status (males aged ≥4 to <11 years and females aged ≥4 to <9 years): an absence of breast

development in females (Tanner 1 only) and testicular volume <4 mL in males, normal thyroid function, peak GH level above 10 ng/mL following a GH stimulation test, bone age ≤12 years, and epiphyses confirmed as open in patients ≥10 years of age. For the purpose of this trial, children with height below the third percentile (based on 2007 Korean national growth charts¹¹) and no identifiable disorder were considered as having ISS. Key exclusion criteria included a known pituitary hormone deficiency (adrenocorticotrophic hormone, antidiuretic hormone, follicle-stimulating hormone, luteinising hormone, thyroid-stimulating hormone) and treatment with any GH in the 12 months before screening; and specific types of growth failure including, but not limited to, known chromosomal abnormalities associated with growth failure and altered sensitivity to GH, e.g., Turner syndrome, Noonan syndrome, Prader-Willi syndrome, chromosomal trisomies, chronic renal failure, type 1 diabetes mellitus, osteo- and chondrodystrophies, hypochondroplasia, achondroplasia, small for gestational age, chronic inflammatory states (such as inflammatory bowel disease, rheumatoid arthritis, systemic lupus, cystic fibrosis), mitochondrial myopathies, intrauterine growth retardation (defined as a birth height and weight both below the fifth percentile and not exhibiting catch-up growth by the age of 3 years), and syndromes known to be associated with growth failure.

Efficacy assessments

Height (cm) was measured in triplicate by a single observer using an identical instrument at visits 1, 2, 3, 4, 5, and 6; corresponding to screening, day 0 and months 3, 6, 9, and 12. Height data collected at visits 2 and 4 were used to calculate the primary endpoint of height velocity (Ht-V [cm/year]) after 6 months of treatment. Height data from visits 2–4 versus data from visits 4–6 were used for the secondary objective of comparing Ht-V for the first 6-month treatment period to that of the following 6-month treatment period in group A, and the exploratory objective of comparing Ht-V for the no treatment first 6-month period to that of the following 6-month treatment period in group B. In addition, height data were used to calculate the confirmatory secondary endpoint of height SD score (Ht-SDS). Ht-SDS values were calculated using the growth data from the Korea Centers for Disease Control and Prevention.¹² Body weight (kg) was assessed at trial entry. Parental heights were measured at visit 1 or 2. If it was not possible to obtain a parental height measurement, a reported height was substituted for a measured height. Insulin-like growth factor 1 (IGF-1) and insulin-like growth factor-binding protein 3 (IGFBP-3) were measured at visits 1, 3, 4, 5 and 6, and used to calculate the supportive secondary endpoint of change in IGF-1 and IGFBP-3 from baseline to 6 months.

Safety assessments

All treatment-emergent adverse events (AEs) reported by the patients or observed by the investigator were recorded by the investigator and evaluated further. AEs were recorded in all patients who received at least one dose of GH and were defined as any untoward event occurring in a patient independent of a causal relationship with the trial product. AEs were designated as mild (no or transient symptoms that do not interfere with daily activities), moderate (marked symptoms with moderate interference of daily activities), or severe (considerable [unacceptable] interference with daily activities). At each visit, a physical examination was performed of the head, ears, eyes, nose, throat, neck, respiratory system, cardiovascular system, gastrointestinal system (including mouth), genitourinary system, musculoskeletal system, central and peripheral nervous systems, and skin, and the findings recorded in the case report form. Abnormal findings were reported as clinically significant or not clinically significant; worsening of any clinically significant finding from the previous visit was reported as an AE. Vital signs, including diastolic and systolic blood pressure, pulse, respiratory rate and body temperature

Table 2: Summary of efficacy endpoints

	Group A (n=36)	Group B (n=15)	Estimated treatment difference* (95% CI)	P value
Primary endpoint				
Ht-V (cm/year)	12.02	6.87	5.15 (4.09, 6.21)	<0.0001
Confirmatory secondary endpoint				
Ht-SDS change from baseline at 6 months	0.76	0.19	–	–
Ht-SDS at 6 months	-1.56	-2.13	0.57 (0.43, 0.71)	<0.0001
Supportive secondary endpoint				
IGF-1, ng/mL	At 6 months	321.18	156.61	–
	Change from baseline	192.58	28.03	164.56 (112.04, 217.08)
IGFBP-3, µg/mL	At 6 months	4.29	3.62	–
	Change from baseline	0.89	0.22	0.67 (-0.04, 1.38)
Ht-V endpoint				
	Ht-V at 6 months cm/year (SD)	Ht-V at 12 months cm/year (SD)	Estimated treatment difference (Ht-V at 0–6 months minus Ht-V at 6–12 months) cm/year (95% CI)	P value
Group A	12.0 (1.8)	10.6 (1.5)	2.80 (1.55, 4.04)	<0.0001
Group B	6.9 (1.3) [†]	9.2 (0.8) [†]	-4.60 (-6.12, -3.09)	<0.0001

*Least square means. Based on the full analysis set.

[†]Patients in group B were not treated during the first 6 months of the study and received growth hormone during the second 6 months of the study.

CI = confidence interval; Ht-SDS = height standard deviation score; Ht-V = height velocity; IGF-1 = insulin-like growth factor 1; IGFBP-3 = insulin-like growth factor-binding protein 3; SD = standard deviation.

were measured throughout the trial. At visits 1 and 3–6, clinical laboratory tests were determined for haematology, urinalysis, biochemistry, lipids, and metabolic and thyroid functions. Bone age was assessed via plain X-rays of the left hand and wrist obtained at visits 1, 4 and 6.

Statistical analysis

As defined in the trial protocol, the primary endpoint of Ht-V after 6 months of treatment was converted per 365 days for completers and last observation carried forward applied for withdrawals; the endpoint was analysed using an analysis of variance (ANOVA) model with group and sex as fixed effects, and age as a covariate. The confirmatory secondary endpoint and supportive secondary endpoints of change in IGF-1 and IGFBP-3 from baseline to 6 months were analysed using an ANOVA model with group and sex as fixed effects, and age and baseline Ht-SDS as covariates. P values and confidence intervals (CIs) are presented together with the estimated mean effect (least square [LS] means) for each group and estimated mean group difference. The supportive secondary endpoint of Ht-V during the first 6 months and last 6 months for group A were compared using a paired t-test. An exploratory endpoint comparing Ht-V during the first and last 6 months for group B was evaluated using a paired t-test, and a 95% CI of the mean was calculated based on t-distribution.

A *post hoc* analysis was conducted on the primary efficacy endpoint and secondary confirmatory efficacy endpoint. This was done by repeating the analyses for all patients, but with data for patients who had height data missing at baseline replaced with their height data at screening to determine if the missing baseline height data affected the efficacy results.

Results

Patient characteristics

A total of 70 patients were screened, of whom, 16 were ineligible for inclusion as a result of failing to meet at least one of the specified inclusion criteria or for meeting at least one of the exclusion criteria (Supplementary Table 2). The remaining 54 patients were randomised 2:1 to group A (n=36) or group B (n=18). Three of the patients randomised to group B withdrew informed consent before being

exposed to treatment. Baseline characteristics were similar between the two treatment groups (Table 1). At the start of the trial, the overall mean age was 6.2 years (SD 1.5), mean height was 107.1 cm (SD 8.3), and mean weight was 17.4 kg (SD 3.0).

Height velocity

Ht-V by treatment visit is displayed in Figure 1. For the primary endpoint of Ht-V after 6 months of treatment, group A (12.02 cm/year) was higher than group B (no treatment; 6.87 cm/year), with an LS means difference of 5.15 cm/year (95% CI 4.09, 6.21; $p < 0.0001$) (Table 2). The results of the *post hoc* analysis were similar to those of the primary analysis, with a mean difference between group A and group B of 5.19 cm/year (95% CI 4.09, 6.19; $p < 0.0001$).

The mean Ht-V for group A was 12.0 cm/year (SD 1.8) and 10.6 cm/year (SD 1.5) at months 6 and 12, respectively; a comparison of Ht-V for the first and last 6 months demonstrated a statistically significant duration contrast with an LS means difference of 2.80 cm/year (95% CI 1.55, 4.04; $p < 0.0001$). For group B, the mean Ht-V was 6.9 cm/year (SD 1.3) and 9.2 cm/year (SD 0.8) at months 6 (no treatment) and 12 (after 6 months' GH treatment), respectively; the duration contrast between the first and last 6 months was statistically significant with an LS means difference of -4.60 cm/year (95% CI -6.12, -3.09; $p < 0.0001$) (Table 2).

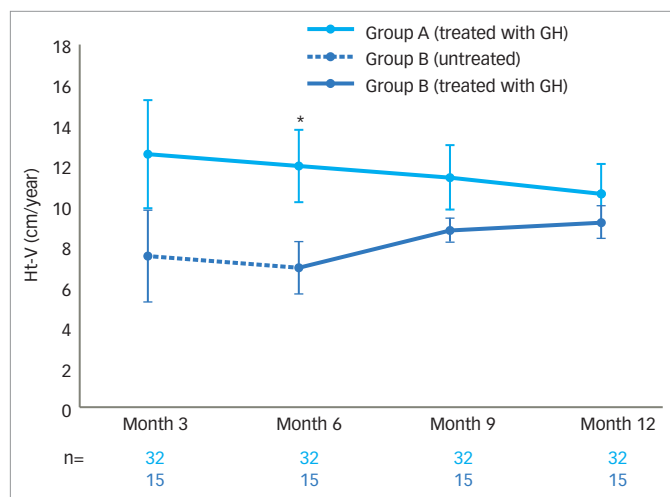
Height SDS

Ht-SDS by treatment visit is displayed in Figure 2, calculated from height data from visits 2, 4 and 6. Change in Ht-SDS (secondary endpoint) after 6 months' GH treatment was higher for group A (0.76) than for the no-treatment group B (0.19), with an LS means difference of 0.57 (95% CI 0.43, 0.71; $p < 0.0001$) (Table 2). A similar result was seen in the *post hoc* analysis, with an LS means difference of 0.57 (95% CI 0.44, 0.70; $p < 0.0001$).

Insulin-like growth factor 1 and insulin-like growth factor-binding protein 3

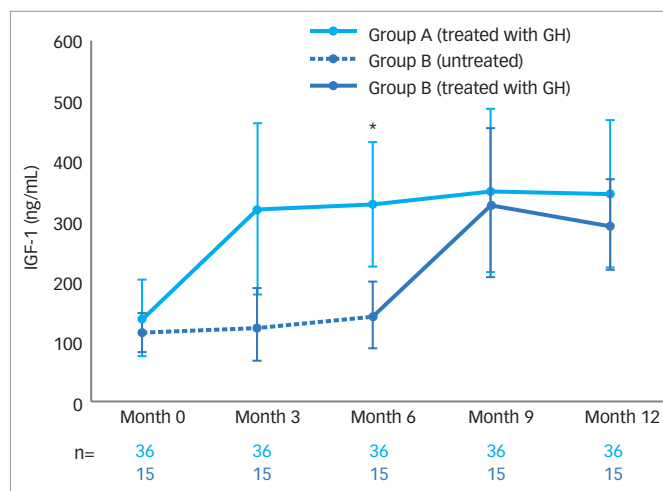
IGF-1 concentration by treatment visit is shown in Figure 3. After 6 months of treatment, the change in IGF-1 concentration for group A

Figure 1: Height velocity by treatment visit



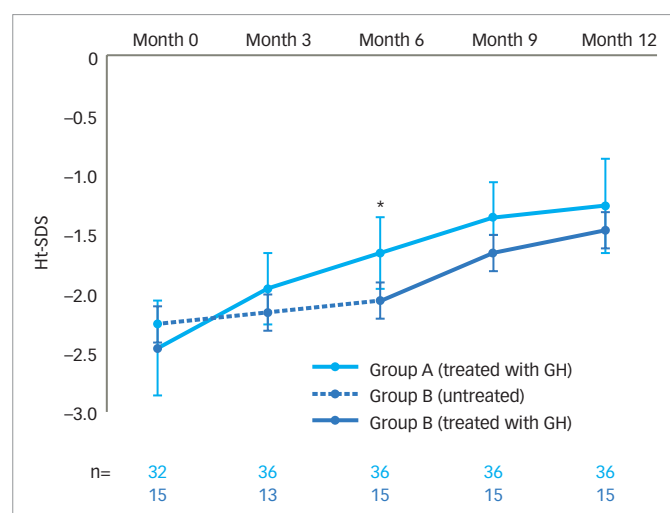
Based on the full analysis set. Data are observed mean (standard deviation).
*Estimated treatment contrast 5.15 cm/year, $p < 0.0001$.
GH = growth hormone; Ht-V = height velocity.

Figure 3: Insulin-like growth factor 1 by treatment visit



Based on the full analysis set. Data are observed mean (standard deviation).
*Change from baseline 192.58 ng/mL for group A and 28.03 ng/mL for group B, estimated treatment contrast 164.56 ng/mL, $p < 0.0001$.
GH = growth hormone; IGF-1 = insulin-like growth factor 1.

Figure 2: Height standard deviation score by treatment visit



Based on the full analysis set. Data are observed mean (standard deviation).
*Change from baseline 0.76 for group A and 0.19 for group B, estimated treatment contrast 0.57, $p < 0.0001$.
GH = growth hormone; Ht-SDS = height standard deviation score.

was 192.58 ng/mL, and at the end of the 6-month no-treatment period for group B, the change in IGF-1 concentration was 28.03 ng/mL, resulting in an estimated treatment difference of 164.56 ng/mL (95% CI 112.04, 217.08; $p < 0.0001$) (Table 2). Change in IGFBP-3 after 6 months of treatment was 0.89 μ g/mL for group A and 0.22 μ g/mL for group B, with an estimated treatment difference of 0.67 μ g/mL (95% CI -0.04, 1.38; $p = 0.06$) (Table 2).

Safety evaluation

Overall, 95 AEs were reported in 36 patients during the trial (from start of GH treatment to last visit). After 12 months, a similar proportion of patients reported AEs in group A (69.4%) and group B (73.3%). Four serious AEs were reported in four patients (11.1%) in group A, and two in two patients (13.3%) in group B. In group A, there was one event each of hydrocoele, pharyngotonsillitis, tonsillar hypertrophy and Kawasaki's disease. In group B, there was one event of pneumonia and one event of tonsillar hypertrophy. There were no AEs leading to withdrawal in this trial.

All AEs were either mild or moderate in severity (affecting 61.1% and 16.7%, respectively, of patients in group A and 53.3% and 26.7%, respectively, in group B) (Table 3). No deaths were reported. The most frequently reported AEs, occurring in at least 5% of patients in both groups, were nasopharyngitis and upper respiratory tract infections (Table 3). A total of three AEs were deemed possibly related to trial product (fatigue, contusion and dizziness), occurring in two patients in group A.

Discussion

The results of this trial show that 6 months of GH treatment (0.469 mg/kg/week) significantly increased height in patients with ISS in Korea, as evaluated by Ht-V and Ht-SDS, compared with no treatment. In a report of 751 patients with ISS enrolled in an observational study, Ross et al.¹³ reported an improvement in Ht-SDS of 0.60 and 0.71 for male and female patients, respectively, following 1 year of GH therapy with an average weekly dose of 0.350 mg/kg. Patients in that study were slightly older than those in the present trial (mean age at baseline was 11.2 years [SD 3.06] versus 6.2 years [SD 1.5] in the present trial) but had a similar height deficit at treatment start (mean Ht-SDS was -2.3 [SD 0.75]).¹³ The lower GH dose of 0.350 mg/kg/week, in comparison to 0.469 mg/kg/week in the present trial, as well as the slightly older age at treatment start, may contribute to the difference in Ht-SDS improvements. This was reported in another study, by Albertsson-Wikland et al.,¹⁴ which showed a dose-dependent improvement in Ht-SDS, with patients receiving 0.469 mg/kg/week GH having a greater improvement in mean (SD) Ht-SDS than patients who received 0.231 mg/kg/week (0.76 [SD 0.22] versus 0.53 [SD 0.20], respectively). In addition to GH dose, response to GH therapy has been shown to be influenced by a variety of factors, including adherence, gender, age at treatment start, and pubertal status.^{13,15,16}

In the present trial, it was noteworthy that the gradient in Ht-SDS (Figure 2) diverged between groups for the first 6 months, but then increased in group B after month 6 when GH was initiated. From this point, the gradient for group B appeared to run approximately in parallel with that for group A. Consequently, at the end of the trial, although the Ht-SDS for group B lagged behind that of group A, demonstrating that the 6-month delay in initiating GH treatment in group B had resulted in a reduced overall growth response at 1 year, it is possible that continued treatment in group B may have allowed those patients to achieve a

Table 3: Summary of treatment-emergent adverse events

	Group A (n=36)		Group B (n=15)		Total (n=51)	
	Number of patients (%)	Number of events	Number of patients (%)	Number of events	Number of patients (%)	Number of events
Events	25 (69.4)	70	11 (73.3)	25	36 (70.6)	95
Serious						
Yes	4 (11.1)	4	2 (13.3)	2	6 (11.8)	6
No	24 (66.7)	66	10 (66.7)	23	34 (66.7)	89
Severity						
Mild	22 (61.1)	59	8 (53.3)	18	30 (58.8)	77
Moderate	6 (16.7)	11	4 (26.7)	7	10 (19.6)	18
Adverse events occurring in ≥5% of patients in either group						
Events	20 (55.6)	56	11 (73.3)	24	31 (60.8)	81
Eye disorders	0 (0.0)	0	1 (6.7)	1	1 (2.0)	1
General disorders and administration site conditions						
Chest pain	0 (0.0)	0	1 (6.7)	1	1 (2.0)	1
Pyrexia	2 (5.6)	2	0 (0.0)	0	2 (3.9)	2
Infections and infestations						
Conjunctivitis	0 (0.0)	0	1 (6.7)	1	1 (2.0)	1
Influenza	3 (8.3)	3	0 (0.0)	0	3 (5.9)	3
Nasopharyngitis	15 (41.7)	43	7 (46.7)	14	22 (43.1)	57
Pharyngotonsillitis	2 (5.6)	2	0 (0.0)	0	2 (3.9)	2
Pneumonia	0 (0.0)	0	1 (6.7)	1	1 (2.0)	1
Rhinitis	0 (0.0)	0	2 (13.3)	3	2 (3.9)	3
Upper respiratory tract infection	3 (8.3)	3	1 (6.7)	1	4 (7.8)	4
Respiratory, thoracic and mediastinal disorders						
Rhinitis allergic	0 (0.0)	0	1 (6.7)	1	1 (2.0)	1
Tonsillar hypertrophy	0 (0.0)	0	1 (6.7)	1	1 (2.0)	1
Skin and subcutaneous tissue disorders						
Dermatitis	0 (0.0)	0	1 (6.7)	1	1 (2.0)	1
Urticaria	3 (8.3)	3	0 (0.0)	0	3 (5.9)	3

Data based on the safety analysis set.

similar height outcome to those in group A. However, accumulated data support the potential importance of initiating treatment as early as possible to achieve optimal height outcomes, although this hypothesis requires further investigation over longer time periods. Furthermore, ISS constitutes a diverse population in which there can be varied responses to GH treatment.

Improvements in Ht-V and Ht-SDS during GH therapy were accompanied by an increase from baseline in IGF-1 and IGFBP-3, although the difference between treatment groups A and B was only significant for IGF-1. The *post hoc* analyses carried out on Ht-V and Ht-SDS data showed that replacement with screening data for the four patients with missing baseline height data did not affect the efficacy results.

In line with other reports of GH therapy in pre-pubertal patients with ISS,^{14,17} there were no unexpected AEs observed during this trial and GH treatment was generally well tolerated. Overall, the safety profiles were similar between treatment groups, with no patterns or clustering of AEs or serious AEs.

A limitation of this trial is that analyses were not performed to correct for parental height. This would account for genetic factors that

may result in short stature, although such adjustments may only be appropriate in patients with parents of normal stature.¹⁸ Furthermore, the open-label design of this trial might have led to significant bias in measurement that could result in an overestimation of the effects of GH therapy on growth.

Conclusions

In conclusion, the results of this trial show that 6 months of GH treatment (0.469 mg/kg/week) significantly increased height in patients with ISS in Korea compared with 6 months of no treatment, as evaluated by Ht-V. Furthermore, GH treatment significantly increased Ht-SDS and was associated with increased IGF-1 levels compared with no treatment. No unexpected safety issues were reported and GH treatment was well tolerated.

Supplementary material

Supplementary Figure 1: Trial design. Graphical representation of trial design.

Supplementary Table 1: Inclusion and exclusion criteria. Documentation of full inclusion/exclusion criteria.

Supplementary Table 2: Patient disposition. Display of patient flow through the trial. □

1. Novo Nordisk. Norditropin NordiLet 5/10/15 mg/1.5 ml. Summary of product characteristics. 2015. Available at: http://mri.cts-mrp.eu/download/DK_H_0001_016_FinalPI_2of4.pdf (accessed 22 September 2019).
2. Kemp SF, Frindik JP. Emerging options in growth hormone therapy: an update. *Drug Des Devel Ther.* 2011;5:411–9.
3. Cohen P, Rogol AD, Deal CL, et al. on behalf of the 2007 ISS Consensus workshop participants. Consensus statement on the diagnosis and treatment of children with idiopathic short stature: a summary of the Growth Hormone Research Society, the Lawson Wilkins Pediatric Endocrine Society, and the European Society for Paediatric Endocrinology Workshop. *J Clin Endocrinol Metab.* 2008;93:4210–7.
4. Ranke MB. Towards a consensus on the definition of idiopathic short stature: summary. *Horm Res.* 1996;45(Suppl. 2):64–6.
5. Pedicelli S, Peschiaroli E, Violi E, Cianfarani S. Controversies in the definition and Treatment of idiopathic short stature (ISS). *J Clin Res Pediatr Endocrinol.* 2009;1:105–15.
6. Allen DB. Safety of growth hormone treatment of children with idiopathic short stature: the US experience. *Horm Res Paediatr.* 2011;76(Suppl. 3):45–7.
7. World Medical Association. WMA Declaration of Helsinki – Ethical principles for medical research involving human subjects. 2018. Available at: www.wma.net/policies-post/wma-declaration-of-helsinki-ethical-principles-for-medical-research-involving-human-subjects/ (accessed 3 April 2020).
8. ICH Harmonised Tripartite Guideline. Statistical principles for clinical trials. International Conference on Harmonisation E9 Expert Working Group. *Stat Med.* 1999;18:1905–42.
9. Wilson TA, Rose SR, Cohen P, et al. Update of guidelines for the use of growth hormone in children: the Lawson Wilkins Pediatric Endocrinology Society Drug and Therapeutics Committee. *J Pediatr.* 2003;143:415–21.
10. Calliebe J, Martin DD, Ranke MB, Wit JM. The auxological and biochemical continuum of short children born small for gestational age (SGA) or with normal birth size (idiopathic short stature). *Int J Pediatr Endocrinol.* 2010;2010:852967.
11. Moon JS, Lee SY, Nam CM, et al. 2007 Korean National Growth Charts: review of developmental process and an outlook. *Korean J Pediatr.* 2008;51:1–25.
12. Kim JH, Yun S, Hwang S, et al. The 2017 Korean national growth charts for children and adolescents: development, improvement, and prospects. *Korean J Pediatr.* 2018;61:135–49.
13. Ross J, Lee PA, Gut R, Germak J. Factors influencing the one- and two-year growth response in children treated with growth hormone: analysis from an observational study. *Int J Pediatr Endocrinol.* 2010;2010:494656.
14. Albertsson-Wikland K, Aronson AS, Gustafsson J, et al. Dose-dependent effect of growth hormone on final height in children with short stature without growth hormone deficiency. *J Clin Endocrinol Metab.* 2008;93:4342–50.
15. Ranke MB, Lindberg A, Price DA, et al. Age at growth hormone therapy start and first-year responsiveness to growth hormone are major determinants of height outcome in idiopathic short stature. *Horm Res.* 2007;68:53–62.
16. Savage MO, Bang P. The variability of responses to growth hormone therapy in children with short stature. *Indian J Endocrinol Metab.* 2012;16(Suppl. 2):S178–84.
17. Wit JM, Rekers-Mombarg LT, Cutler GB, et al. Growth hormone (GH) treatment to final height in children with idiopathic short stature: evidence for a dose effect. *J Pediatr.* 2005;146:45–53.
18. Haymond M, Kappelgaard AM, Czernichow P, et al. Early recognition of growth abnormalities permitting early intervention. *Acta Paediatr.* 2013;102:787–96.