

Immunodiagnosis of clonorchiasis using a recombinant antigen

Tai-Soon YONG,* Hye-Jin YANG, Soon-Jung PARK, Yu-Kyoung KIM,
Du-Ho LEE and Sang-Mi LEE

Department of Parasitology, Yonsei University College of Medicine, Seoul 120-752, Korea

Abstract: A cDNA expression library of *Clonorchis sinensis* adult worm was constructed, and screened out immunologically. One clone, pBCs31, was selected in view of its predominant reactivity with an experimentally infected rabbit serum. Recombinant *C. sinensis* antigen with 28 kDa as a β -galactosidase fusion protein produced in *Escherichia coli* was identified by immunoblot analysis. The cloned gene was composed of 16 copies of a 30 base pair repeat and an additional 320 bases. The deduced amino acid sequence of the tandem repeat was AQPCKSGDGG. On RNA slot blot analysis, *C. sinensis* adult worm RNA showed a positive reaction with the cloned gene. Enzyme-linked immunosorbent assay using a purified recombinant antigen of pBCs31 showed high specificity for diagnosis of clonorchiasis.

Key words: *Clonorchis sinensis*, immunodiagnosis, recombinant antigen, repetitive sequence

INTRODUCTION

Clonorchis sinensis is an important parasite of humans in Eastern Asia, including China, Taiwan, northern Vietnam and Korea. In Korea, it is well known that human infection of *C. sinensis* is widely distributed along the great rivers and streams (Rim, 1986).

Although stool examination is a definitive diagnostic method for clonorchiasis, continuous efforts have been made to improve the effectiveness of immunodiagnostic tests as supportive diagnostic methods for last few decades. For example, the intradermal test

based on the immediate type hypersensitivity reaction of *C. sinensis* infected persons has been widely used for epidemiological studies, or for diagnosis at hospitals in Korea (Ahn *et al.*, 1975). Also, the enzyme-linked immunosorbent assay (ELISA) has been reported useful in terms of its high sensitivity and feasibility (Lee *et al.*, 1981). It is likely that ELISA is the most popular immunological technique used for diagnosis of clonorchiasis at present.

In addition, the immunoblot analysis has been used to identify antigenic proteins of *C. sinensis*. Seven major IgE-reacting *C. sinensis* antigens with a molecular weight from 66 to 15.5 kDa were noticed (Yong *et al.*, 1990 & 1993). Seven kDa and 12.5 kDa species-specific antigen were reported as the marker antigens of an active clonorchiasis (Kim, 1994 & 1998). Hong *et al.* (1997) reported that the protein bands of 43, 34 and 28-25 kDa of *C. sinensis* were species-specific, and strongly

* Received 23 May 1998, accepted after revision 22 July 1998.

This study was supported by Non-Directed Research Fund, Korea Research Foundation, 1996.

* Corresponding author (e-mail: tsyong212@yumc.yonsei.ac.kr)

reacted with the infected human sera. These studies showed that there were diverse antigenic proteins in *C. sinensis* worm extract.

The purpose of the study was the production of a recombinant antigen by applying molecular biology techniques for improving a specificity or sensitivity of the conventional immunodiagnostic test using a worm extract for the antigen. Here we describe the isolation of *C. sinensis* cDNA encoding an antigenic protein which reacts with IgG antibodies in an experimentally infected rabbit serum, and the application of an immunodiagnostic test using a recombinant protein for diagnosis of clonorchiasis.

MATERIALS AND METHODS

Collection of parasites and sera

Clonorchis sinensis metacercariae were collected from naturally infected fish (*Pseudorasbora parva*) caught in the Nakdonggang (River), Korea. These metacercariae were orally administered to experimental rabbits. Eight weeks later, adult *C. sinensis* worms were obtained from the bile ducts of the rabbits, and blood collection was done. Sera were separated, and stored at -70°C until used. Human sera of tissue-invading helminth infections were employed from the sera stock of the Department of Parasitology, Yonsei University College of Medicine (Yong *et al.*, 1991).

Construction of cDNA expression library

Clonorchis sinensis mRNA was purified by using the Messenger RNA isolation kit (Stratagene, La Jolla, CA, USA). In brief, live *C. sinensis* worms recovered from an infected rabbit were lysed completely in a denaturing solution of 4 M guanidium isothiocyanate and 0.14 M β -mercaptoethanol, and centrifuged at 12,000 *g* for 10 min. The supernatant was transferred to the tube containing oligo (dT) cellulose resin. The resin was washed with high-salt buffer, and poly (A)⁺ mRNA was eluted with low-salt buffer.

A cDNA library of *C. sinensis* was constructed using a ZAP ExpressTM cDNA Gigapack II gold cloning kit (Stratagene)

according to the manufacturer's instruction. Briefly, the first strand cDNA was synthesized on 5 μg of *C. sinensis* poly (A)⁺ mRNA, and second strand was synthesized by nick translation. *EcoR* I adaptors were ligated to the blunt ends. *Xho* I restriction enzyme digestion resulted directional cDNA. The cDNA was inserted into predigested ZAP express vector arms. Packaging was carried out *in vitro* with Gigapack II packaging extract. The library was plaqued on *Escherichia coli* XL1-Blue MRF', and the number of recombinant was counted.

Immunoscreening and *in vivo* excision

Expression of fusion protein was induced with 2.5 mM IPTG, and transferred to the nitrocellulose membrane. Immunoscreening was carried out by phage dot immunoblot analysis using a picoBlueTM antibody screening kit (Stratagene) with a 1:500 dilution of an *C. sinensis* infected rabbit serum and alkaline phosphatase labelled anti-rabbit IgG. Positive clones were rescreened until all plaques on the plate were positive. One strongly reacted clone was selected. The selected clone in ZAP express vector was excised *in vivo* with ExAssist helper phage (Stratagene).

Immunoblot analysis

Crude extract of recombinant bacteria induced with 2.5 mM IPTG was electrophoresed in 12% SDS-polyacrylamide gels, and electrotransferred to the nitrocellulose membrane (Tsang *et al.*, 1983). The membranes were treated as described above for immunoscreening.

DNA sequencing

Plasmid was purified from transformed bacteria by the alkaline-SDS minipreparation method (Sambrook *et al.*, 1989). The cDNA insert size was determined by digestion with *EcoR* I and *Xho* I endonucleases, and 0.8% agarose gel electrophoresis. DNA sequencing was performed by the dideoxy nucleotide chain termination method (Sanger *et al.*, 1977) using a T7 Sequenase version 2.0 DNA sequencing kit (Amersham Life Science, Cleveland, OH, USA).

RNA slot blot

Total RNA of *C. sinensis* or *Paragonimus westermani* adult worms were purified using an RNA isolation kit (Stratagene) with some modifications. Each RNA was blotted on Nitran-Plus membrane (Schleicher & Schuell, Keene, NH, USA) using a slot blot apparatus (Hoefer Pharmacia Biotech, San Francisco, CA, USA).

Membranes were prehybridized in hybridization buffer (50% formamide, 5× SSPE, 2× Denhardt's reagent, and 0.1% SDS) for 2 hrs at 42°C. For making the DNA probe, a cDNA insert of pBCs31 was purified from low melting-agarose gel following digestion with *EcoR* I and *Xho* I restriction enzymes. The purified cDNA was labeled with [α -³²P] dATP using a Random primer DNA labelling kit (Takara Shuzo, Otsu, Japan), and added to hybridization buffer. After 18 hrs of hybridization at 42°C, the nitrocellulose membrane was washed, and exposed to X-ray film (Bok *et al.*, 1995).

ELISA using purified recombinant antigen

Bacteria were cultured and induced with IPTG. The recombinant protein fused to β -galactosidase was purified by an affinity chromatography using anti- β -galactosidase antibody (ProtoSorb lacZ immunoaffinity adsorbent; Promega, Madison, WI, USA) according to the manufacturer's instructions. ELISA was carried out with purified recombinant antigen (2 μ g/ml) coated on ELISA plates as described (Yong *et al.*, 1993). The plates were reacted against a 1:200 dilution of human sera with various parasitic infections including 20 clonorchiasis, 10 paragonimiasis, 10 cysticercosis or 6 sparganosis, and developed with ortho-phenylenediamine (Sigma, St. Louis, MO, USA).

RESULTS

Immunoscreening of cDNA library and immunoblot

About 2×10^5 independent phages were screened. More than a hundred plaques showed strong positive reactions by first

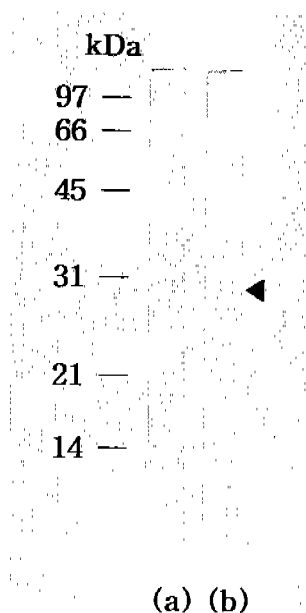


Fig. 1. IgG-immunoblot analysis of pBCs31 fusion protein. The pBCs31 induced in *E. coli* XL1-Blue MRF⁺ shows 28 kDa band reactive to an *C. sinensis* infected rabbit serum. (a) Negative control of *E. coli* lysate containing pBK-CMV vector only, (b) *E. coli* lysate containing induced pBCs31. At about 14 kDa, background reacting bands against a *E. coli* protein were noticed in both (a) and (b).

immunoscreening. Of these, one predominantly reacted plaque, pBCs31, was selected. IgG-immunoblot using an infected rabbit serum against recombinant bacterial extract of the clone (pBCs31) identified a reacting band of a fusion protein with a molecular mass of 28 kDa (Fig. 1). Background reacting bands with about 14 kDa were noticed in both lane (a) and (b) of the rabbit serum against a *E. coli* protein.

DNA sequencing

The *C. sinensis* cDNA insert size contained in pBCs31 was 0.8 kb on agarose gel electrophoresis (Fig. 2). The insert encoded a polypeptide of 192 amino acids with a predicted molecular mass of 21.1 kDa. The nucleotide sequence of the cDNA insert of pBCs31 showed an open reading frame encoding a protein bearing repetitive amino acid sequence (Fig. 3). The nucleotide sequence has been submitted to the GenBank

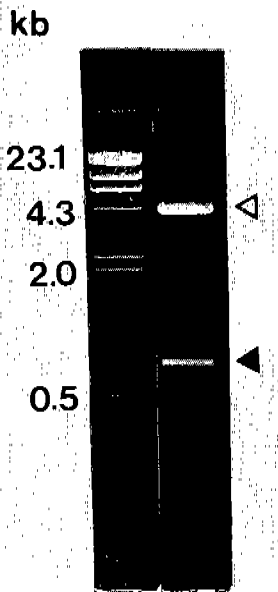


Fig. 2. The size of *C. sinensis* cDNA insert contained in pBCs31 was 0.8 kb (closed arrowhead) on 0.8% agarose gel electrophoresis following double digestion with *EcoR* I and *Xho* I. Open arrowhead shows the vector.

under an accession number AF077549 through BRIC (biological information center), Korea. The cloned gene was composed of 16 copies of a 30 base pair repeat and an additional 320 bases at its 3'-end, a partial cDNA fragment without start codon. The deduced amino acid sequence of the tandem repeat was AQPCKSGDGG. A homology search in GenBank using NCBI Blast program showed that this putative protein has 58% identity with *Xenopus laevis* APEG protein at amino acid level (ACC#: X51394).

RNA slot blot

Clonorchis sinensis adult worm RNA showed a positive reaction with the cloned gene, while *P. westermani* adult worm RNA showed no reactions by RNA slot blot analysis (Fig. 4). This result along with the immunoblot analysis (Fig. 1), confirmed that the cloned gene in the study was reverse transcribed from *C. sinensis* adult mRNA.

Purification of recombinant antigen and ELISA

The recombinant antigen was purified by using affinity chromatography as pure as a single band on immunoblot using a *C. sinensis* infected rabbit serum (Fig. 5). By ELISA using the fusion protein as an antigen, 55% of 20 sera of *C. sinensis* egg passers showed positive reactions, while the conventional ELISA using a crude antigen of *C. sinensis* adult worm showed positive reactions in 70%. So, sensitivity of the ELISA decreased. No false positive cases were found of any sera with 10 paragonimiasis, 6 cysticercosis or 10 sparganosis in the study using the fusion protein as an antigen. By the conventional ELISA, 10% of 20 paragonimiasis cases showed false positive reactions. In summary, ELISA using a purified species-specific recombinant protein showed high specificity for diagnosis of clonorchiasis (Table 1).

DISCUSSION

We have been able to select a clone producing recombinant *C. sinensis* protein from a *C. sinensis* cDNA expression library. The cloned antigen coding gene is a little unique in terms of being composed of tandemly repeated nucleotide sequences. However, it seems likely that many of the antigen coding genes or surface antigen genes in a parasite genome may be organized in tandem repetitions (Dame *et al.*, 1984; Peterson *et al.*, 1986). Tandemly repeated peptide antigens may induce a strong humoral immune response in the infected hosts. *Xenopus* APEG protein homologous to pBCs31 was composed of repetitive amino acids including alanine, proline, glutamic acid and glycine. It is a component of storage granules contained in the dermal secretion gland of a frog (Gmachl *et al.*, 1990). Although some homology of the gene was found, more study is needed of the molecule to elucidate its function and any relationship between the two.

Cross-reactions have been frequently reported and known well in the immunodiagnosis of clonorchiasis and paragonimiasis

(G)CA CAA CCT CCT AAG TCA GGT GAC GGC GGT
 A Q P P K S G D G G
 [GCA CAA CCT CCT AAG TCA GGT GAC GGC GGT] x 15 times
 A Q P P K S G D G G
 GCA CAA CCT CCT AAG TCA GGT GCT CAA CGA CCG TTT AGT CAC TGG
 A Q P P K S G A Q R P F S H W
 ATC GCT GGT TGG TTC TTG GTT CCC CTG GCA GTC AAG GCC TCC GAT
 I A G W F L V P L A V K A S D
 CAC TTC TGA TTCCCATGTGAAAACGGACGCGCACCCGCCGGAAATACTATG
 H F stop
 TGTATTGAGCTTTTGATATCATGCAACTAACGTACGCGTTTTTGCCATTTTGTGGA

 TTTCACTTAATTTTCGCAAACGATTGTTTTTTTTCGCTACTCCAAACACTGTCTGC

 ATAATCCACGGTTTTTCACGTTTTTCGGATAATGAAATACATTTTGTAAACCC [A]₂₀

Fig. 3. The nucleotide sequence of pBCs31 insert and deduced amino acid sequence showed that one open reading frame encoding an antigenic protein bearing repetitive epitopes. The indicated reading frame is in phase with the β -galactosidase gene of pBK-CMV vector, and G in the parenthesis at the beginning is from the adaptor sequence for cloning.



Fig. 4. Total RNAs of adult *C. sinensis* and *P. westermani* (5 μ g each) were blotted, and hybridized with ³²P-labelled cloned gene (i.e., *C. sinensis* cDNA contained in pBCs31). *Clonorchis sinensis* RNA showed a positive reaction, while *P. westermani* RNA showed no reaction.

(Cho and Soh, 1976; Soh *et al.*, 1985; Yong *et al.*, 1991). In order to improve specificity of the ELISA for serodiagnosis of clonorchiasis, monoclonal antibodies were produced, and applied in previous studies. About one fourth of monoclonal antibodies were species-specific, but others showed some degree of cross reactivity against various helminths' crude antigens (Yong *et al.*, 1990 & 1991). A species-specific monoclonal antibody-based competitive ELISA test for diagnosis of clonorchiasis showed better specificity than the conventional ELISA. However, it would not be practically

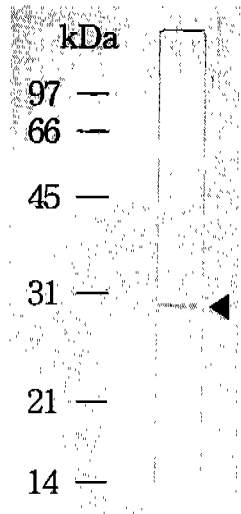


Fig. 5. Immunoblot analysis of an affinity purified recombinant protein. The recombinant fused protein to β -galactosidase shows a band reacting to the *C. sinensis* infected sera.

useful because of the limited availability of highly specific monoclonal antibodies and the cumbersome standardization of the test. The production of recombinant *C. sinensis* antigens in *E. coli* in this study suggests another

Table 1. Reactivity of pBCs31 recombinant protein to sera from cases with various parasitic infections or negative control by ELISA

Source of human sera	No. of cases assayed	No. of cases to pBCs31	No. of cases anti- <i>C. sinensis</i> adult worm antigen positive
clonorchiasis	20	11	14
paragonimiasis	10	0	2
cysticercosis	10	0	0
sparganosis	6	0	0

way to increase specificity of the immunological test. If techniques are readily available for mass production and feasible purification, it can be quite useful theoretically and practically. Actually the amount of recombinant protein production achieved in the study was not much at this moment, although the recombinant protein was found to be soluble. Subcloning to another cloning vector, *i.e.* pET-23b (Novagen, Madison, WI, USA), was tried to solve the problem without any improvement of the production (data not shown).

The intradermal test for diagnosis of *C. sinensis* infection or *P. westermani* has been widely used since the 1960s (Kim and Yang, 1964) in spite of its well-known limitations. False positive reactions or prolonged response even after cure are quite common instances when we perform the intradermal test. Cross-reactive IgE-reacting molecules between *C. sinensis* and *P. westermani* were identified by IgE-immunoblot and autoradiography (Yong *et al.*, 1993). Conventionally, in order to produce antigens for the intradermal test, we need to catch infected fish in the river, infect experimental rabbits, collect the worms from sacrificed animals, and extract the crude antigen from adult worms. Mass production of highly species-specific recombinant proteins would be a convenient way of obtaining antigens for immunodiagnosis. Production of more sensitive and species-specific recombinant antigen for intradermal test would be a promising subject for study in the near future.

So far, there have been very few papers on the molecular characteristics of *C. sinensis* antigens (Hong, 1993). Although a cDNA clone of *C. sinensis* was selected for immunodiagnosis of clonorchiasis in this communication primarily, we believe that this kind of DNA approach is indispensable for dissecting and

identifying *C. sinensis* antigens in the future.

ACKNOWLEDGEMENTS

We sincerely thank to Professor Dong-Il Chung and his colleagues, Department of Parasitology, Kyungpook National University School of Medicine, Taegu, Korea, for their assistance in catching freshwater fish harboring *C. sinensis* metacercariae.

REFERENCES

- Ahn YK, Soh CT, Han JK (1975) Comparison of dermal reaction with VBS and KST antigens of *Clonorchis sinensis* in reference to sensitivity and specificity. *New Med J* **18**(9): 1195-1201.
- Bok JW, Jin YJ, Lee JH (1995) Independent mechanisms are utilized for the coordinate and transient accumulation of two differentiation-specific mRNAs during differentiation of *Naegleria gruberi* amoebae into flagellates. *Exp Cell Res* **219**: 47-53.
- Cho KM, Soh CT (1976) Indirect fluorescent antibody test for the serodiagnosis of paragonimiasis and clonorchiasis. *Yonsei Rep Trop Med* **7**(1): 26-39.
- Dame JB, Williams JL, McCutchan TF, *et al.* (1984) Structure of the gene encoding the immunodominant surface antigen on the sporozoite of the human malaria parasite *Plasmodium falciparum*. *Science* **225**(4662): 595-599.
- Gmachl M, Berger H, Thalhammer J, Kreil G (1990) Dermal glands of *Xenopus laevis* contain a polypeptide with a highly repetitive amino acid sequence. *FEBS Letters* **260**(1): 145-148.
- Hong SJ (1993) *Clonorchis sinensis* tropomyosin: Cloning and sequence of partial cDNA amplified by PCR. *Korean J Parasitol* **31**(3):

- 285-292.
- Hong ST, Kho WG, Lee MJ, Lee JS, Lee SH (1997) Immunoblot patterns of clonorchiasis. *Korean J Parasitol* **35**(2): 87-93.
- Kim DC, Yang HK (1964) Epidemiological study of paragonimiasis and clonorchiasis on Cheju-Do. *Report NIH, Korea* **1**(1): 98-104.
- Kim SI (1994) Immune reactions between excretory-secretory antigens and specific antibodies of *Clonorchis sinensis* before and after praziquantel treatment in experimentally infected rabbits. *Korean J Parasitol* **32**(1): 35-42.
- Kim SI (1998) A *Clonorchis sinensis*-specific antigen that detects active human clonorchiasis. *Korean J Parasitol* **36**(1): 37-45.
- Lee JK, Min DY, Im KI, Lee KT, Soh CT (1981) Study of enzyme-linked immunosorbent assay (ELISA) method in serodiagnosis of *Clonorchis sinensis* infection. *Yonsei J Med Sci* **14**(1): 133-147.
- Peterson DS, Wrightsman RA, Manning JE (1986) Cloning of a major surface antigen gene of *Trypanosoma cruzi* and identification of a nonapeptide repeat. *Nature* **322**: 566-568.
- Rim HJ (1986) The current pathobiology and chemotherapy of clonorchiasis. *Korean J Parasitol* **24**(suppl): 1-141.
- Sambrook J, Fritsch EF, Maniatis T (1989) Molecular cloning. A laboratory manual, 2nd ed., Cold Spring Harbor, NY, USA.
- Sanger F, Nicklen S, Coulson AR (1977) DNA sequencing with chain terminating inhibitors. *Proc Natl Acad Sci USA* **74**: 5463-5467.
- Soh CT, Min DY, Ryu JS, Yong TS (1985) Study on the reproducibility of ELISA technique for the diagnosis of clonorchiasis and paragonimiasis. *Yonsei Rep Trop Med* **16**(1): 1-10.
- Tsang VCW, Peralta JM, Simons AR (1983) Enzyme-linked immunoelectrotransfer blot techniques (EITB) for studying the specificities of antigens and antibodies separated by gel electrophoresis. *Methods Enzymol* **92**: 377-391.
- Yong TS, Im KI, Chung PR (1991) Analysis of *Clonorchis sinensis* antigens and diagnosis of clonorchiasis using monoclonal antibodies. *Korean J Parasitol* **29**(3): 293-310.
- Yong TS, Im KI, Lee OY, Kim, DC (1990) Evaluation of *Clonorchis sinensis* specific antigen purified by affinity chromatography using monoclonal antibodies for serodiagnosis of human clonorchiasis. *Yonsei Rep Trop Med* **21**: 25-32.
- Yong TS, Kim DS, Lee SY, Im KI, Lee KY (1993) Detection of specific serum IgE in clonorchiasis cases and analysis of *Clonorchis sinensis* allergens. *Yonsei Med J* **34**(3): 248-257.
- Yong TS, Shin CO, Im KI (1990) Demonstration of immune responses in rabbits infected with *Clonorchis sinensis* by enzyme-immunoelectrotransfer blot. *Yonsei Rep Trop Med* **21**: 19-24.

=초록=

간흡충 재조합항원을 이용한 간흡충종의 면역 진단

용태순, 양혜진, 박순정, 김유경, 이두호, 이상미

연세대학교 의과대학 기생충학교실

간흡충 성충의 cDNA library를 제작하고, 간흡충 감염 토끼 혈청으로 강한 양성 반응을 보이는 클론 (pBCs31) 한 개를 면역선별하였다. 이 클론이 28 kDa의 재조합단백을 encoding하는 것을 면역이적법으로 확인하였다. 클론된 유전자는 30개의 일정한 염기서열이 16번 반복된 후 320개의 다른 염기가 이어져 있었다. 이 반복되는 염기서열의 연역된 아미노산서열은 AQPPKSGDGG이었다. 이 재조합항원을 이용한 효소면역검사법은 간흡충 감염 사람 혈청에 높은 특이도를 보였다.

(기생충학잡지 36(3): 183-190, 1998년 9월)