

# A nomogram to preoperatively predict 1-year disease-specific survival in resected pancreatic cancer following neoadjuvant chemoradiation therapy

Ho Kyoung Hwang<sup>1,2\*</sup>, Keita Wada<sup>3\*</sup>, Ha Yan Kim<sup>4</sup>, Yuichi Nagakawa<sup>5</sup>, Yosuke Hijikata<sup>5</sup>, Yota Kawasaki<sup>6</sup>, Yoshiharu Nakamura<sup>7</sup>, Lip Seng Lee<sup>8</sup>, Dong Sup Yoon<sup>1,2</sup>, Woo Jung Lee<sup>1,2</sup>, Chang Moo Kang<sup>1,2</sup>

<sup>1</sup>Division of HBP Surgery, Department of Surgery, Yonsei University College of Medicine, Seoul 03722, Korea; <sup>2</sup>Pancreatobiliary Cancer Clinic, Yonsei Cancer Center, Severance Hospital, Seoul 03722, Korea; <sup>3</sup>Department of Surgery, Teikyo University School of Medicine, Tokyo 173-8605, Japan; <sup>4</sup>Biostatistician, Biostatistics Collaboration Unit, Department of Biomedical Systems Informatics, Yonsei University College of Medicine, Seoul 03722, Korea; <sup>5</sup>Department of Gastrointestinal and Pediatric Surgery, Tokyo Medical University, Tokyo 160-8402, Japan; <sup>6</sup>Department of Digestive Surgery, Breast, and Thyroid Surgery, Graduate School of Medical Sciences, Kagoshima University, Kagoshima 890-0065, Japan; <sup>7</sup>Department of Gastrointestinal and Hepato-Biliary-Pancreatic Surgery, Nippon Medical School, Tokyo 890-0065, Japan; <sup>8</sup>Department of General Surgery, Changi General Hospital, Singapore 529889, Singapore

\*These authors contributed equally to this work.

Correspondence to: Chang Moo Kang, M.D., Ph.D. Division of HBP Surgery, Department of Surgery, Yonsei University College of Medicine, 50-1 Yonsei-ro, Seodaemun-gu, Seoul 120-752, Korea. Email: cmkang@yuhs.ac.

## Abstract

**Objective:** This study aimed to develop a nomogram to predict the 1-year survival of patients with pancreatic cancer who underwent pancreatectomy following neoadjuvant treatment with preoperatively detectable clinical parameters. Extended pancreatectomy is necessary to achieve complete tumor removal in borderline resectable and locally advanced pancreatic cancer. However, it increases postoperative morbidity and mortality rates, and should be balanced with potential benefit of long-term survival.

**Methods:** The medical records of patients who underwent pancreatectomy following neoadjuvant treatment from January 2005 to December 2016 at Severance Hospital were retrospectively reviewed. Medical records were collected from five international institutions from Japan and Singapore for external validation.

**Results:** A total of 113 patients were enrolled. The nomogram for predicting 1-year disease-specific survival was created based on 5 clinically detectable preoperative parameters as follows: age (year), symptom (no/yes), tumor size at initial diagnostic stage (cm), preoperative serum carbohydrate antigen (CA) 19-9 level after neoadjuvant treatment ( $<34/\geq 34$  U/mL), and planned surgery [pancreaticoduodenectomy (PD) (pylorus-preserving PD)/distal pancreatectomy (DP)/total pancreatectomy]. Model performance was assessed for discrimination and calibration. The calibration plot showed good agreement between actual and predicted survival probabilities; the the Greenwood-Nam-D'Agostino (GND) goodness-of-fit test showed that the model was well calibrated ( $\chi^2=8.24$ ,  $P=0.5099$ ). A total of 84 patients were used for external validation. When correlating actual disease-specific survival and calculated 1-year disease-specific survival, there were significance differences according to the calculated probability of 1-year survival among the three groups ( $P=0.044$ ).

**Conclusions:** The developed nomogram had quite acceptable accuracy and clinical feasibility in the decision-making process for the management of pancreatic cancer.

**Keywords:** Pancreatic cancer; neoadjuvant treatment; pancreatectomy; survival; nomogram

Submitted Aug 01, 2019. Accepted for publication Dec 30, 2019.

doi: 10.21147/j.issn.1000-9604.2020.01.12

View this article at: <https://doi.org/10.21147/j.issn.1000-9604.2020.01.12>

## Introduction

Pancreatic cancer is among the most fatal cancers of the gastrointestinal tract. The overall 5-year survival rate of pancreatic cancer is only approximately 6%, and it is the fourth leading cause of cancer-related deaths in the United States (1) as well as in Korea (2). Although surgical resection with clear safe margin is the only modality for curative treatment, only 20% of patients are eligible for surgical resection at the time of initial diagnosis because majority of patients are often diagnosed in the late stage and thus have poor general condition. Moreover, more than 50% of patients who undergo curative surgery develop recurrence within 1 year, and the 5-year survival rate of resected pancreatic cancer is less than 20% (1,3,4).

According to the National Comprehensive Cancer Network (NCCN) guideline (5), pancreatic cancers requiring neoadjuvant treatment are those that involve the major vascular structures and adjacent organs. When margin-negative resection is considered as the most effective treatment (6), extended pancreatectomy including combined major vascular resection and adjacent organ resection may be necessary to achieve complete tumor removal in borderline and locally advanced pancreatic cancers. However, extended pancreatic resections following combined preoperative chemotherapy and radiotherapy before surgery are known to increase the rates of post-operative morbidity and mortality.

Several randomized control studies (7-10) that compared oncologic outcomes and short-term perioperative outcomes between extended pancreatectomy and standard pancreatectomy showed that extended pancreatectomy is associated with severe complications without improving oncologic outcomes. Bhayani *et al.* (11) analyzed 273 extended pancreatoduodenectomies from the National Surgical Quality Improvement Project database and reported a threefold increase in major perioperative morbidity and mortality rates even after adjusting for comorbidity in such surgical strategy. Hartwig *et al.* (12) also recently assessed the outcome of extended pancreatectomy for borderline resectable and locally advanced pancreatic cancer and showed that extended resections were associated with increased perioperative morbidity and mortality.

Surgeons need to consider many clinical and practical factors when deciding the need for pancreatectomy, such as

potential oncologic benefit of surgical approach, patients' existing co-morbidity, expected life span of the patients, quality of life after surgery, potential postoperative complications, and surgery-related mortality. If possible, it was a good strategy to avoid unnecessary surgery in patients without surgical benefits.

In this study, we aimed to develop a nomogram to predict the 1-year survival of patients with pancreatic cancer who underwent pancreatectomy following neoadjuvant treatment with preoperatively detectable clinical parameters to ultimately provide a basis for decision-making for the appropriate management of pancreatic cancer following neoadjuvant treatment.

## Materials and methods

### *Study population*

This study protocol was approved by the Institutional Review Board of Yonsei University College of Medicine (Approval number: 4-2018-0374). The medical records of the patients who underwent pancreatectomy following neoadjuvant treatment from January 2005 to December 2016 were retrospectively reviewed. Neoadjuvant treatment was routinely performed for the patients with borderline resectable or locally advanced pancreatic cancer. Among patients in the resectable stage, neoadjuvant treatment was performed preoperatively, even if there was no major vascular involvement, but the tumor size was large and there was invasion to the surrounding organs.

In this study, we included patients who underwent neoadjuvant treatment before surgery and were able to perform curative resection in pancreatic cancer. Patients who did not attempt pancreatic resection due to distant metastasis found during surgery and patients who did not undergo curative resection due to severe major vascular invasion were excluded.

### *Data collection*

Data on clinicopathologic variables, such as sex, age, serum carbohydrate antigen (CA) 19-9, tumor location, operation type, tumor size, tumor grade (differentiation), pathologic tumor (pT) stage, presence of lymph node metastasis, lymph node ratio (i.e., total number of metastatic lymph nodes divided by the total number of retrieved lymph node), microscopic perineural invasion and lymphovascular

invasion, and disease-specific survival were collected. Surgeons followed up all the patients, usually every 3–4 months and the follow-up continued until recurrence or death was confirmed.

### *External validation*

External validation to test the accuracy of developed nomogram to predict 1-year disease-specific survival was conducted by reviewing the medical records of the patients who underwent pancreatectomy following neoadjuvant treatment for pancreatic cancer from five international institutions from Japan and Singapore.

### *Statistical analysis*

When developing the prediction model, preoperatively available clinical parameters were included in the final model that achieved statistical significance in the univariate Cox model and were also considered clinically important. Based on the results of the multivariate Cox model, a nomogram was created by using the package *rms* in R software (Version 3.1.3; R Foundation for Statistical Computing, Vienna, Austria) (<http://www.r-project.org/>). Serum CA19-9 levels were divided into two based on a cut-off of 34 U/mL, which was based on the proposal of Contal and O'Quigley (13) as determined via log-rank test.

To quantify the discriminative capability of the final model, Harrell's C-index was measured. Calibration was evaluated via a calibration plot, which is a graphic representation of the relationship between the observed and predicted survival, and the Greenwood-Nam-D'Agostino (GND) goodness-of-fit test (14). Internal validation was performed using 1,000 bootstrapped resamples and also generated the calibration plot. To further assess the calibration, we plotted Kaplan-Meier curves over the risk-stratified groups by the predicted probability by the nomogram. Finally, we tested the performance of the nomogram in the external validation cohort. The formula derived in the development cohort was applied to all patients in the validation cohort. To further validate the nomogram, patients were categorized into three risk groups according to the nomogram-based calculated 1-year disease-specific survival probability, and survival was compared between the three groups using log-rank test. Continuous variables were described as  $\bar{x}\pm s$ , and categorical variables were described as a frequency (%). Student's *t*-test, Chi-square test, or Fisher's exact test were

performed as appropriate. Statistical analyses were performed using SAS software (Version 9.4, SAS Institute, Cary, NC, USA), and  $P<0.05$  was considered statistically significant.

## **Results**

### *Patient characteristics*

During the study period, 113 patients underwent pancreatectomy following neoadjuvant chemoradiation therapy. Of these, 64 were men and 49 were women. The mean age was  $51.5\pm 9.4$  years old. A total of 42 (37.2%) patients were asymptomatic. In terms of resectability, 46 (40.7%) patients had resectable pancreatic cancer, 46 (40.7%) had borderline resectable pancreatic cancer, and 21 (18.6%) had locally advanced pancreatic cancer. The most common location of the tumor was the pancreatic head (86/113, 76.1%), followed by the pancreatic body/tail (27/113, 23.9%). Pylorus-preserving pancreaticoduodenectomy (PPPD) was performed in 83 (73.5%) patients, distal pancreatectomy (DPS) in 27 (23.9%) patients; and total pancreatectomy (TP) in 3 (2.7%) patients. Combined venous vascular resection including superior mesenteric vein (SMV)-splenic vein (SV)-portal vein (PV) confluence was performed in 40 (35.4%) patients. The maximum diameter of the resected pancreatic cancer was  $2.1\pm 1.5$  cm. Lymphovascular and perineural invasion were observed in 10 (8.8%) and 50 (44.2%) patients, respectively. Lymph node metastasis was found in 36 (31.9%) patients. The median disease-free survival and disease-specific survival was 11.0 [95% confidence interval (95% CI): 8.8–13.2] months and 29.0 (95% CI: 1.6–38.4) months, respectively. Twenty-seven (23.9%) patients were found to have cancer-related mortality within 1 year postoperatively.

### *Preoperative factors to predict 1-year disease-specific survival*

In univariate analysis, age ( $P=0.0165$ ), serum CA 19-9 (after neo-Tx) following neoadjuvant treatment ( $P=0.0023$ ), and preoperative image-based tumor size ( $P=0.0469$ ) were statistically significant preoperative parameters to predict less than 1-year disease-specific survival in patients with pancreatic cancer who underwent pancreatectomy following neoadjuvant treatment. Subsequent multivariate analysis showed that age [hazard ratio (HR)=1.062, 95%

CI: 1.008–1.118,  $P=0.024$ ] and CA 19-9  $\geq 34$  U/mL (after neo-Tx) following neoadjuvant treatment (HR=2.863, 95% CI: 1.123–7.300,  $P=0.0276$ ) were independent prognostic factors to predict less than 1-year disease-specific survival (Table 1).

#### Developing nomogram to predict 1-year disease-specific survival and model performance

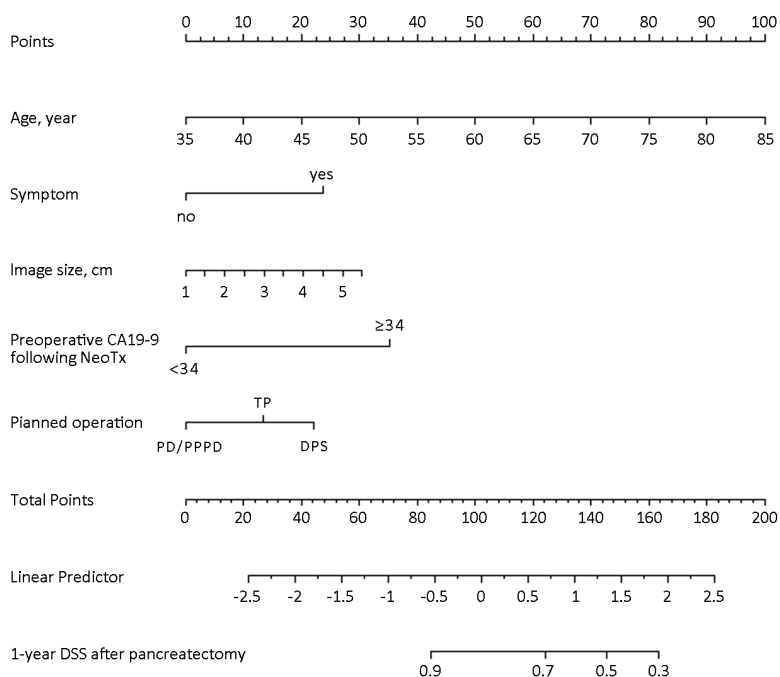
Of the 113 patients, the variables of “preoperative serum CA 19-9 after neoadjuvant treatment” were missing in 9 patients, we excluded this data and 104 patients were finally analyzed. Based on the complete survival-specific data and

preoperatively available parameters of the 104 patients, the nomogram to predict 1-year disease-specific survival of the patients who underwent pancreatectomy following neoadjuvant treatment for pancreatic cancer was created (Figure 1). The nomogram was created based on 5 clinically detectable preoperative parameters: age (year), symptom (no/yes) on initial diagnosis, image-based tumor size at initial diagnostic stage (cm), preoperative serum CA 19-9 (after neo-Tx) ( $<34/\geq 34$  U/mL), and planned surgery [PD (PPPD)/DPS/TP]. The model performance was quantified via Harrells’ c-statistics, which was 0.736 [standard error (SE) =0.064].

**Table 1** Univariate and multivariate analyses showing association between preoperative clinical parameters and 1-year disease-specific survival

Variables	Univariate analysis			Multivariate analysis		
	HR	95% CI	P	HR	95% CI	P
Age (year)	1.058	1.101–1.108	0.0165	1.062	1.008–1.118	0.0241
Sex, male	0.858	0.398–1.848	0.6947			
BMI (kg/m <sup>2</sup> )	0.861	0.740–1.002	0.0538			
Symptom, yes	1.954	0.826–4.625	0.1273	2.019	0.692–5.891	0.1986
Weight loss, yes	1.206	0.487–2.989	0.6855			
Jaundice, yes	0.598	0.268–1.331	0.2076			
Abdominal pain, yes	1.921	0.903–4.087	0.0903			
Dyspepsia, yes	1.414	0.571–3.504	0.4541			
ASA score						
2 vs. 1	0.987	0.406–2.398	0.9761			
3 vs.1	0.703	0.182–2.721	0.6103			
4 vs. 1	NA	NA	NA			
CA19-9 (initial diagnosis)	1	1.000–1.000	0.2564			
CA19-9 (after neo-Tx)	1.001	1.000–1.001	0.0023			
CA19-9 (after neo-Tx) ( $\geq 34$ ) (U/mL)	2.302	0.966–5.489	0.0612	2.863	1.123–7.300	0.0276
Tumor size on imaging (cm)	1.450	1.005–2.093	0.0469	1.243	0.800–1.931	0.3336
Smoking, yes	1.060	0.485–2.314	0.8841			
Tumor location	1.679	0.754–3.739	0.2044			
Initial resectability						
2 vs. 1	0.423	0.173–1.038	0.0605			
3 vs. 1	0.711	0.258–1.957	0.5092			
Predicted surgery						
PD/PPPD	reference					
DPS	1.751	0.780–3.928	0.1745	1.922	0.697–5.285	0.2068
TP	3.726	0.493–28.134	0.2022	1.522	0.179–12.904	0.7003

BMI, body mass index; ASA, American Society of Anesthesiologist; NA, not available; CA, carbohydrate antigen; neo-Tx, neoadjuvant treatment; Resectability 1, resectable; Resectability 2, borderline resectable; Resectability 3, locally advanced; PD, pancreaticoduodenectomy; PPPD, pylorus-preserving PD; TP, total pancreatectomy; HR, hazard ratio; 95% CI, 95% confidence interval.



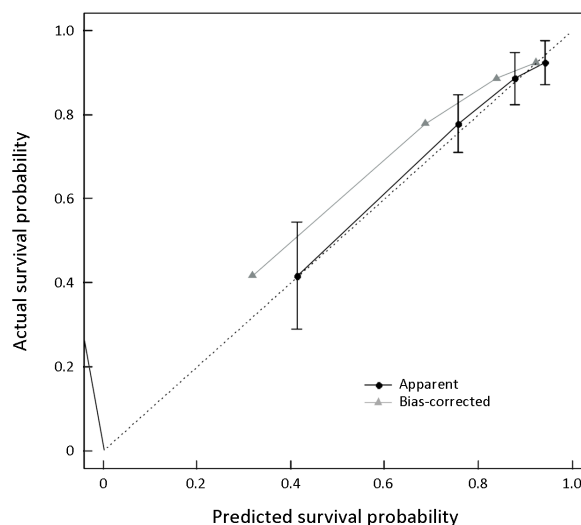
**Figure 1** Nomogram to predict 1-year disease-specific survival of patients with pancreatic cancer who underwent resection following neoadjuvant treatment. Only preoperative clinical parameters, such as age, symptom, image-based tumor size at diagnosis, preoperative serum CA 19-9 after neoadjuvant treatment, and planned surgery, were considered in developing a nomogram. CA, carbohydrate antigen; PP, pancreaticoduodenectomy; PPPD, pylorus-preserving pancreaticoduodenectomy; TP, total pancreatectomy; DPS, distal pancreatectomy; DSS, disease-specific survival.

**Validation of nomogram**

Model performance for discrimination and calibration was assessed. Discrimination was validated using the bootstrap validation with 1,000 resamples. The calibration plot (Figure 2) showed good agreement between actual and predicted survival probabilities, and the GND goodness-of-fit test showed that the model was well calibrated ( $\chi^2=8.24$ ,  $P=0.5099$ ). To further assess the discriminating capability of the nomogram, according to nomogram-based estimated 1-year disease-specific survival probability, patients were categorized into three risk groups as follows: the low-risk group comprised patients with a nomogram-based calculated 1-year disease-specific survival probability of <33.3%; the intermediate-risk group, 33.3%–66.6%; and the high-risk group, >66.6%. Statistically significant differences in the survival rates were found among the three groups ( $P<0.001$ , Figure 3).

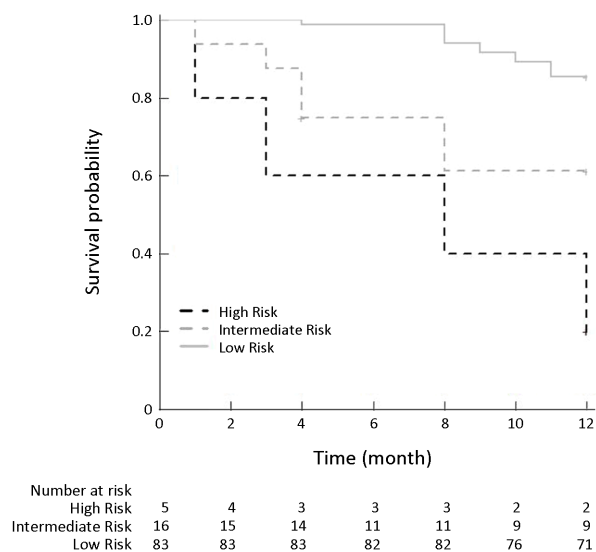
**External validation to assess nomogram performance in predicting 1-year disease-specific survival**

Institutional data of the patients who underwent resection



**Figure 2** Calibration plot comparing predicted and actual 1-year survival. The “apparent” curve was calculated directly from the development dataset. The “bias-corrected” curve was adjusted via bootstrap with 1,000 resamples.

following neoadjuvant treatment were obtained from five international hospitals. A total of 84 patients were used for



**Figure 3** Correlation of actual patients' survival according to calculated probability of 1-year disease-specific survival (internal validation). Low-risk group comprised patients with nomogram-based calculated 1-year disease-specific survival probability of <33.3%; intermediate-risk group, 33.3%–66.6%; and high-risk group, >66.6%. The survival rates were significantly different among the three groups ( $P < 0.001$ ).

external validation to assess the nomogram performance. Patients' age ( $61.4 \pm 9.6$  vs.  $66.9 \pm 9.7$ ,  $P = 0.0001$ ) and serum CA 19-9 (after neo-Tx) ( $\geq 34$  U/mL) following neoadjuvant treatment [48 (46.2%) vs. 64 (74.4%),  $P < 0.0001$ ] were statistically significant between the study cohort and the validation cohort (Table 2). Moreover, when correlating actual disease-specific survival and calculated 1-year

disease-specific survival, there was statistically significant differences according to the calculated probability of 1-year survival among the three groups ( $P = 0.044$ , Figure 4).

## Discussion

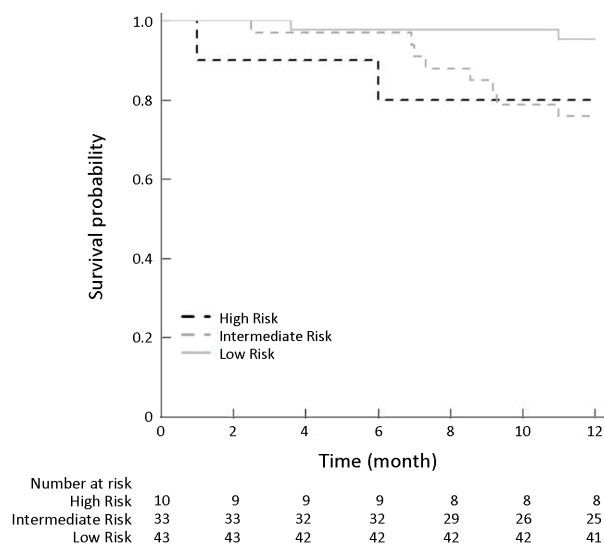
Pancreatic cancer is the fourth leading cause of cancer-associated mortality, with approximately 43,090 deaths recorded in 2017 in the United States (15). The median survival is 26 months, and the 5-year survival rate is 30% (6). Margin-negative pancreatectomy followed by adjuvant chemotherapy is the standard treatment modality for resectable pancreatic cancer. However, only 15%–20% of the patients are eligible for resection at the time of diagnosis. In addition, patients who underwent margin-positive pancreatectomy show poor survival outcomes similar to those with locally advanced and unresectable pancreatic cancer (6). Therefore, neoadjuvant treatment has been utilized for borderline resectable and locally advanced (unresectable) pancreatic cancer to improve eligibility for surgical resection, with the ultimate aim to optimize the treatment outcomes and minimize the risk of treatment-related morbidity.

Studies (16,17) have shown the importance of neoadjuvant treatment in pancreatic cancer. A recent meta-analysis (18) of studies reporting median overall survival by intention to treat in patients with resectable or borderline resectable pancreatic cancer treated with or without neoadjuvant treatment showed that neoadjuvant treatment appears to improve overall survival (18.8 months vs. 14.8 months) despite lower overall resection rates (66.0% vs.

**Table 2** Comparative analysis between study and validation cohort

Variables	n (%)		P
	Study cohort (N=104)	Validation cohort (N=86)	
Age (year)	61.4±9.6	66.9±9.7	0.0001
Symptom, yes	66 (63.5)	58 (67.4)	0.5663
Preoperative serum CA19-9 (after neo-Tx) ( $\geq 34$ ) (U/mL)	48 (46.2)	64 (74.4)	<0.0001
Tumor size on imaging (cm)	2.9±0.9	2.9±1.3	0.6682
Planned surgery			0.6266
PD/PPPD	79 (76.0)	60 (69.8)	
DPS	23 (22.1)	24 (27.9)	
TP	2 (1.9)	2 (2.3)	
Death (event)	22 (21.2)	12 (14.0)	0.1975

CA, carbohydrate antigen; neo-Tx, neoadjuvant treatment; PD, pancreaticoduodenectomy; PPPD, pylorus-preserving PD; DPS, distal pancreatectomy; TP, total pancreatectomy; Categorical and continuous variables were analyzed via Chi-square test or Fisher's exact test and student's *t*-test, respectively.



**Figure 4** Correlation of actual patients’ survival according to calculated probability of 1-year disease-specific survival (external validation). Low-risk group: the nomogram-based calculated 1-year disease-specific survival probability is <33.3%; intermediate-risk group: 33.3%–66.6%; and high-risk group: >66.6%. The survival rates were significantly different among the three groups (P=0.044).

81.3%). In addition, Choi *et al.* (19) conducted a prospective randomized controlled trial on the oncologic benefits of neoadjuvant treatment in borderline resectable pancreatic cancer and showed that neoadjuvant treatment provided oncologic benefit over upfront surgery in patients with borderline resectable pancreatic cancer. Even in the metastatic setting, FOLFIRINOX and nab-paclitaxel-gemcitabine (20,21) have shown a survival advantage over previously standard gemcitabine monotherapy; thus, they have become the standard treatment option in patients with good performance status. Based on these clinical evidences, neoadjuvant treatment is expected to be actively used in managing pancreatic cancer.

Deciding on the necessity of radical pancreatectomy following neoadjuvant for pancreatic cancer can be complicated. Most patients who underwent neoadjuvant treatment have borderline resectable and locally advanced pancreatic cancer and usually require combined vascular resection with extensive surgical dissection for margin-negative resection. Several studies have reported that extended radical pancreatectomy is associated with increased morbidity and mortality (10,12). In addition, except for resectable pancreatic cancer, other tumors are biologically aggressive. Thus, patients are at high risk of

early recurrence and early cancer-related mortality despite successful curative surgical resection. Therefore, the patients and their families should be well-informed of these risks before surgery. Moreover, the balance between potential risk and oncologic benefit should be considered in deciding the need for surgery. However, many researches on survival analysis in patients with pancreatic cancer who underwent surgery following neoadjuvant treatment are based on pathological examinations after surgical intervention, such as tumor grade (22), pathological complete response (23), lymph node status (24), perineural invasion (25), and margin-status (6). The response of neoadjuvant chemotherapy is thought to be an important prognostic factor in pancreatic cancer with neoadjuvant treatment (23). However, in our clinical practice, it is true that response to neoadjuvant treatment cannot be always measured objectively due to inflammatory changes and previous biliary stent. Therefore, in order to develop nomogram to be applied in every case of pancreatectomy following neoadjuvant treatment, we did not include the response of neoadjuvant chemotherapy, but include preoperative serum CA 19-9 after neoadjuvant treatment. Methods to preoperatively predict the survival outcome for these patients are thus important in clinical practice.

In the present study, only preoperative clinical parameters, such as, age, symptom, image-based tumor size at diagnosis, preoperative serum CA 19-9 after neoadjuvant treatment, and planned surgery, were considered in developing a nomogram (internet calculator; <http://40.121.207.11:8080/home1.jsp>) to predict 1-year survival outcomes after pancreatectomy following neoadjuvant treatment for pancreatic cancer. In univariate analysis, variables with P<0.2 were age, body mass index (BMI), symptom, abdominal pain, CA19-9 (after neo-Tx), CA19-9 (≥34 U/mL,) tumor size, initial resectability, and predicted surgery. The three parameters (symptom, tumor size, and planned surgery) were of no significance in multivariate analysis but were used in the development of the nomogram. The reason for this was to consider the concept of events per predictor variable (EPV) when constructing the nomogram and to include variables with clinical importance among variables with P<0.2. Although there are some variables that are not significant when multiple logistic regression analysis is performed, the reason why we built the prediction model with these five variables was because we wanted to find a model with better overall model performance than the significance of each variable. We selected this model as the final model because it

showed the best performance when modeled using these five variables in this data. Harrell's c-index was 0.684 (SE=0.064) when the nomogram was created with age, tumor size, and CA19-9 after neoadjuvant treatment with  $P < 0.05$  in univariate analysis and when the nomogram was created with age, abdominal pain, and CA19-9 after neoadjuvant treatment, which were selected by the stepwise selection method, the Harrell's c-index was 0.711 (SE=0.064). Internal validation of the current nomogram via Harrell's c-statistics (0.736) and the calibration plot demonstrated its quite acceptable clinical accuracy. In addition, external validation of the clinical availability and feasibility of the current nomogram in predicting survival outcome in patients who underwent pancreatectomy following neoadjuvant treatment was conducted using dataset from 5 international institutions. Similar to the primary observation from the development dataset, the predicted 1-year disease-specific survival was successfully correlated with actual survival outcomes in external validation set, which is among the strong points of the current nomogram. However, when correlating actual disease-specific survival and calculated 1-year disease-specific survival, the survival curves between high-risk group and intermediate-risk group crossed in the external validation data (Figure 4). We think the statistical power is a bit lower due to the small number of event cases in the high-risk group in the external data. Even though the p-value of external validation set increased compared to development set, considering P-value less than 0.05, the prediction effect seems to be useful. It was thought to be meaningful that we performed external validation with multinational data to evaluate generalizability as well as internal validation for our prediction model.

However, when we tried the GND goodness-of-fit test in the survival setting, the number of events was too small to calculate, therefore, the P-value calculation for accuracy between predicted value and actual value seems to be a limitation in this study. The accuracy and clinical application of this nomogram should be re-assessed in prospective large volume-patient cohorts. To the best of our knowledge, the preoperatively detectable parameter-based nomogram to predict 1-year disease-specific survival is the first to be developed in the era of pancreatectomy following neoadjuvant treatment for managing pancreatic cancer. We hope that the present nomogram could provide crucial information in the decision-making process for the management of pancreatic patients who underwent neoadjuvant treatment.

There are several limitations in the present study. First, this was a retrospective study with a limited number of patients. In addition, initial radiological resectability (26) and various different neoadjuvant protocols were not considered in the analysis. Recently, preoperative comorbidity index (27,28) and nutritional parameters (29) have been reported to be independent prognostic factors in patients who underwent pancreatectomy following neoadjuvant treatment. The accuracy and clinical application of this nomogram should be re-assessed in prospective large volume-patient cohorts. Further, more accurate and reliable methods to calculate and predict survival need to be developed to improve patient-oriented surgical approach to pancreatic cancer. Particularly, in the medical field influenced by the 4th Industrial Revolution, such methods are predicted to be developed via data-based artificial intelligent algorithms. The continued increase in available data and emerging computational methods indicate that precision public health is highly likely to be available in the future (30).

## Conclusions

The nomogram to predict 1-year disease-specific survival for patients with pancreatic cancer who are eligible for surgery following neoadjuvant treatment showed accuracy and clinical feasibility for decision-making in the management of pancreatic cancer.

## Acknowledgements

This study was supported by a faculty research grant of Yonsei University College of Medicine for 6-2015-0053.

## Footnote

*Conflicts of Interest:* The authors have no conflicts of interest to declare.

## References

1. Poruk KE, Firpo MA, Adler DG, et al. Screening for pancreatic cancer: why, how, and who? *Ann Surg* 2013;257:17-26.
2. Jo JH, Chung MJ, Park JY, et al. Clinical characteristics of long-term survivors of inoperable pancreatic cancer: an 8-year cohort analysis in Korea. *Pancreas* 2014;43:1022-31.



3. Tjaden C, Michalski CW, Strobel O, et al. Clinical impact of structured follow-up after pancreatic surgery. *Pancreas* 2016;45:895-9.
4. Hata S, Sakamoto Y, Yamamoto Y, et al. Prognostic impact of postoperative serum CA 19-9 levels in patients with resectable pancreatic cancer. *Ann Surg Oncol* 2012;19:636-41.
5. National Comprehensive Cancer Network. NCCN clinical practice guidelines in oncology (NCCN Guidelines®) Pancreatic Adenocarcinoma. Version 2. Available online: [https://www.nccn.org/professionals/physician\\_gls/pdf/pancreatic.pdf](https://www.nccn.org/professionals/physician_gls/pdf/pancreatic.pdf).
6. Delpero JR, Jeune F, Bachellier P, et al. Prognostic value of resection margin involvement after pancreaticoduodenectomy for ductal adenocarcinoma: Updates from a French prospective multicenter study. *Ann Surg* 2017;266:787-96.
7. Pedrazzoli S, DiCarlo V, Dionigi R, et al. Standard versus extended lymphadenectomy associated with pancreatoduodenectomy in the surgical treatment of adenocarcinoma of the head of the pancreas: a multicenter, prospective, randomized study. *Ann Surg* 1998;228:508-17.
8. Farnell MB, Pearson RK, Sarr MG, et al. A prospective randomized trial comparing standard pancreatoduodenectomy with pancreatoduodenectomy with extended lymphadenectomy in resectable pancreatic head adenocarcinoma. *Surgery* 2005;138:618-28; discussion 28-30.
9. Nimura Y, Nagino M, Takao S, et al. Standard versus extended lymphadenectomy in radical pancreatoduodenectomy for ductal adenocarcinoma of the head of the pancreas: long-term results of a Japanese multicenter randomized controlled trial. *J Hepatobiliary Pancreat Sci* 2012;19:230-41.
10. Jang JY, Kang MJ, Heo JS, et al. A prospective randomized controlled study comparing outcomes of standard resection and extended resection, including dissection of the nerve plexus and various lymph nodes, in patients with pancreatic head cancer. *Ann Surg* 2014;259:656-64.
11. Bhayani NH, Enomoto LM, James BC, et al. Multivisceral and extended resections during pancreatoduodenectomy increase morbidity and mortality. *Surgery* 2014;155:567-74.
12. Hartwig W, Gluth A, Hinz U, et al. Outcomes after extended pancreatectomy in patients with borderline resectable and locally advanced pancreatic cancer. *Br J Surg* 2016;103:1683-94.
13. Contal C, O'Quigley J. An application of changepoint methods in studying the effect of age on survival in breast cancer. *Comput Stat Data An* 1999;30:253-70.
14. Demler OV, Paynter NP, Cook NR. Tests of calibration and goodness-of-fit in the survival setting. *Stat Med* 2015;34:1659-80.
15. Siegel RL, Miller KD, Jemal A. Cancer Statistics, 2017. *CA Cancer J Clin* 2017;67:7-30.
16. Mokdad AA, Minter RM, Zhu H, et al. Neoadjuvant therapy followed by resection versus upfront resection for resectable pancreatic cancer: A propensity score matched analysis. *J Clin Oncol* 2017;35:515-22.
17. de Geus SW, Eskander MF, Bliss LA, et al. Neoadjuvant therapy versus upfront surgery for resected pancreatic adenocarcinoma: A nationwide propensity score matched analysis. *Surgery* 2017;161:592-601.
18. Versteijne E, Vogel JA, Besselink MG, et al. Meta-analysis comparing upfront surgery with neoadjuvant treatment in patients with resectable or borderline resectable pancreatic cancer. *Br J Surg* 2018;105:946-58.
19. Jang JY, Han Y, Lee H, et al. Oncological benefits of neoadjuvant chemoradiation with gemcitabine versus upfront surgery in patients with borderline resectable pancreatic cancer: A prospective, randomized, open-label, multicenter phase 2/3 trial. *Ann Surg* 2018;268:215-22.
20. Quinton AE, Gwynne SH, Yim KL. Nab-paclitaxel in combination with gemcitabine for the treatment of metastatic pancreas cancer: the South Wales experience. *Med Oncol* 2018;35:115.
21. Sohal DPS, Kennedy EB, Khorana A, et al. Metastatic Pancreatic Cancer: ASCO Clinical Practice Guideline Update. *J Clin Oncol* 2018;36:2545-56.
22. Crippa S, Partelli S, Zamboni G, et al. Poorly differentiated resectable pancreatic cancer: is upfront resection worthwhile? *Surgery* 2012;152:S112-9.
23. He J, Blair AB, Groot VP, et al. Is a pathological complete response following neoadjuvant chemoradiation associated with prolonged survival in patients with pancreatic cancer? *Ann Surg* 2018;268:1-8.

24. Tran Cao HS, Zhang Q, Sada YH, et al. Value of lymph node positivity in treatment planning for early stage pancreatic cancer. *Surgery* 2017;162:557-67.
25. Takahashi H, Ohigashi H, Ishikawa O, et al. Perineural invasion and lymph node involvement as indicators of surgical outcome and pattern of recurrence in the setting of preoperative gemcitabine-based chemoradiation therapy for resectable pancreatic cancer. *Ann Surg* 2012;255:95-102.
26. Garces-Descovich A, Beker K, Jaramillo-Cardoso A, et al. Applicability of current NCCN Guidelines for pancreatic adenocarcinoma resectability: analysis and pitfalls. *Abdom Radiol (NY)* 2018;43:314-22.
27. Nipp RD, Zanconato A, Zheng H, et al. Predictors of early mortality after surgical resection of pancreatic adenocarcinoma in the era of neoadjuvant treatment. *Pancreas* 2017;46:183-9.
28. Mirkin KA, Hollenbeak CS, Gusani NJ, et al. Trends in utilization of neoadjuvant therapy and short-term outcomes in resected pancreatic cancer. *Am J Surg* 2017;214:80-8.
29. Nakano Y, Kitago M, Shinoda M, et al. Clinical predictive factors of long-term survival after curative resection of pancreatic cancer: a retrospective study. *Cancer Med* 2017;6:2278-86.
30. Dolley S. Big data's role in precision public health. *Front Public Health* 2018;6:68.

**Cite this article as:** Hwang HK, Wada K, Kim HY, Nagakawa Y, Hijikata Y, Kawasaki Y, Nakamura Y, Lee LS, Yoon DS, Lee WJ, Kang CM. A nomogram to preoperatively predict 1-year disease-specific survival in resected pancreatic cancer following neoadjuvant chemoradiation therapy. *Chin J Cancer Res* 2020;32(1):105-114. doi: 10.21147/j.issn.1000-9604.2020.01.12