

1

, \* †  
\* †

=Abstract=

**A case of gastric and colonic fistulas with pancreatic and peripancreatic abscess after acute necrotizing pancreatitis**

Chung Hye Won, M.D., Lee Yong Chan, M.D., Lee Joon Kyu, M.D.,  
Pack Yong Han, M.D., Park In Suh, M.D, Moon Young Myoung, M.D,  
and Kim Myeong-Jin, M.D.\*

*Department of Internal Medicine and Diagnostic Radiology\*  
Yonsei University, College of Medicine, Seoul, Korea*

According to several reports, the incidence of pancreatic and peripancreatic abscess after acute pancreatitis is quoted at about 5 percentage and this rare complication may cause fistulas with multiple intra-abdominal organs. Mortality rates are nearly 100 per cent, mostly due to sepsis and hemorrhage in the absence of surgical intervention and even with surgical drainage and celiotomy, death rate of 30 to 50 percentage are noted due to recurrence.

The pathogenesis of these fistulas may be multifactorial ; activated pancreatic enzyme and the products of secondary infection penetrating visceral wall directly, and vascular thrombosis and shock causing ischemic necrosis of the gastrointestinal wall.

The gastrointestinal fistulas after acute necrotizing pancreatitis have been reported rarely in Korea.

The authors experienced a sixty three year old male patient case of gastric and colonic fistulas in communication with retroperitoneal pancreatic abscess after acute pancreatitis. The patient received broad-spectrum antibiotics and percutaneous catheter drainage without surgical intervention. After treatment, he recovered well complete. Conservative care with drainage procedure may be a suitable alternative for managing the gastrointestinal fistulas with the pancreatic and peripancreatic abscess after acute necrotizing pancreatitis.(Korean J Med 58:675-680, 2000)

**Key Words** : Pancreatitis; Abscess; Fistula; Drainage

---

• : 1999 8 19  
• : 1999 8 31  
• : , 134, (120-752)  
E-mail : syan@yumc.yonsei.ac.kr

Ca/P 8.1/3.3 mg/dL, BUN/Cr 50.5/4.1 mg/dL, SGOT/SGPT 15/4 IU/l, ALP 106 IU/l, 5.1/1.8 g/dL, 0.9 mg/dL, 125 mg/dL, amylase/lipase 71/786 IU/l, LDH 101 IU/l, prothrombin time 16.3 sec (INR 1.4), FDP , fibrinogen 573mg/dL, D-dimer , ESR 58 mm/hr, CRP 16.5 mg/dL .

Enterococcus faecalis, K.pneumonia, Acinetobacter baumannii, Pseudomonas aeruginosa

(Figure 1).



**Figure 1.** Gadolinium enhanced coronal T1-weighted MR image (TR/TE,100/1.8/ Fr) obtained at admission shows large retroperitoneal abscess in both anterior pararenal space.

(Percutaneous catheter drainage)

가

(Figure 2).

10Fr. pigtail

가

5% 가  
100% 가  
1-6)  
가  
11-17)  
1  
: .63  
:  
:  
:  
10  
5 amylase lipase  
가  
: 40 2-4 1-2  
가 :  
: 95/50 mmHg,  
120 / , 37.5 , 20 / .  
20,510/mm<sup>3</sup> (seg 90.9%), 8.9 g/dL,  
27.1%, 558,000/mm<sup>3</sup>  
Na/ K/ Cl/tCO2 132/3.1/90/32 mmol/L ,

- Chung Hye Won, et al : A case of gastric and colonic fistulas with pancreatic and peripancreatic abscess after acute necrotizing pancreatitis -



**Figure 2.** Bilateral retroperitoneal abscesses are drained via percutaneous catheter. Stomach was filled with contrast material injected through the catheter inserted into right retroperitoneal abscess (arrow :stomach).



**Figure 3.** EGD shows sealing off of the fistulous opening at the posterior wall of the antrum (arrow).

가

9

20

( 17 )

22

(Figure 3),

가

34

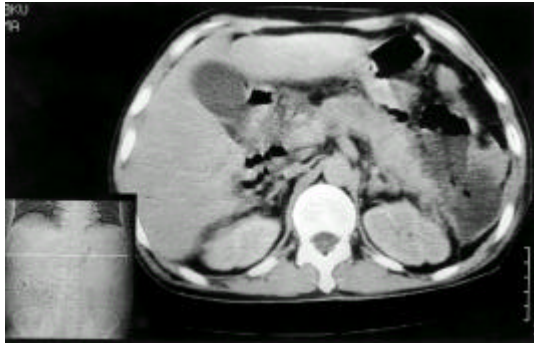


Figure 4. A



Figure 4. B



Figure 4. C

**Figure 4 A, B, C.** Serial abdominal CT shows gradual decrease in size of the bilateral retroperitoneal abscess. A: Initial CT shows localized fluid collection and air around pancreatic tail (before admission). B: CT scan obtained at the time of demonstrates large bilateral retroperitoneal abscess. (Hospital Day #3) C: On HD #44, followed CT shows decrease in size of the abscess cavities.



Figure 5. Fistulogram obtained through the left abscess cavity shows a fistulous opening into transverse colon.

3  
가

44

가 (Figure 4A-C) 45

73  
74

(Figure 5),

pigtail 19Fr

97

가

5%

가

가

가

1990

가

30 50% 가

100%

1990

가

30-50% 가

100%

15

가

20,510/mm<sup>3</sup> (seg. 90.9%)

IU/L

가

가

가

가

가

가

가

가

가

가

가

가

가

가

가

, , , , ( 5-10)

, , , , ( 10 90 )

가

가

5, 6)

Ranson's Criteria

7)

APACHE

, 가

가

11)

가

7)

가

가

가

11-14)

가

1995 Hung

54%

가

6)

1990

Brucker

16)

17)

17)

가

17)

7

8

1990

100%

가

12, 13)

20 40%

2

가 가 ,

가

5%  
가  
가  
(Percutaneous catheter drainage)

100%

가

## REFERENCES

- 1) Pickleman J, Noncada R. *The role of percutaneous drainage of pancreatic abscess. Am Surg* 53:451-455, 1987
- 2) Mason HDW, Andrew F, Henry HB. *Intestinal fistular complicating pancreatic abscess. Surg Gynecol Obstet.* 140:39-45, 1975
- 3) Herbert CW, Richard AK, Terrence JB, David JP, L.William T, Patrick CF. *Pancreaticocenteric fistula: no longer a surgical disease? J Clin Gastroenterol* 14:117-121, 1992
- 4) Russel JC, Welch JD, Clark DG. *Colonic complication of acute pancreatitis and pancreatic abscess. Am J Surg* 146:558-564, 1983
- 5) Abcarian H, Eftaiba M, Kraft AR, Nybus LM. *Colonic complication of acute pancreatitis. Arch Surg* 114:995-1001, 1979
- 6) Andrew LW, Ashby CM, David WR. *Gastrocutaneous fistulas associated with pancreatic abscess, Am Surg* 210:603-607, 1989
- 7) Kukora JS. *Extensive colonic necrosis complicating acute pancreatitis. Surgery* 97:290-294, 1985
- 8) Graves HA Jr, Nelson A, Byrd BF Jr. *Gastrocutaneous fistula as postoperative complication. Ann Surg* 171:656-662, 1970
- 9) Pearlstein L, Jones CE, Polk HC Jr. *Gastrocutaneous fistula; etiology and treatment. Ann Surg* 187:223-226, 1978
- 10) Scholefield JH, Goodman AJ, Morgan WP. *Abdominal wall and gastric infarction in acute pancreatitis. Pancreas* 3:494-496, 1988
- 11) Adans DB, Harvey TS, Anderson MC. *Percutaneous catheter drainage of infected pancreatic and perip pancreatic fluid collection. Arch Surg* 125:1554-1557, 1990
- 12) Warshaw AL, Jin GL. *Improved survival in 45 patients with pancreatic abscess. Ann Surg* 202:408-417, 1985
- 13) Bardley EL 3rd. *Management of infected pancreatic necrosis by open drainage. Ann Surg* 206:542-550, 1987
- 14) Picklenam J, Moncada R. *The role of percutaneous drainage of pancreatic abscesses. Am Surg* 53:451-455, 1987
- 15) Malangoni MA, Richardson JD, Shallcross JC, Seiler JG, Polk HC Jr. *Factors contributing to fatal outcome after treatment of pancreatic abscess. Ann Surg* 203:605-613, 1986
- 16) Bruckner M, Grimm H, Nam VC, Soehendra N. *Endoscopic treatment of pancreatic abscess originating from biliary pancreatitis. Surg Endosc* 4: 227-229, 1990
- 17) Cooney DR, Jacobowitz L, Telander RL, Allen JE. *Pancreaticocolonic fistula: a complication of pancreatic pseudocysts in childhood. J Pediatr Surg* 13:492-496, 1978