

(4)

Sarcomatoid Hepatocellular Carcinoma

Sarcomatoid Hepatocellular Carcinoma

Young Nyun Park, M.D. and Chanil Park, M.D.

Department of Pathology, Yonsei University College of Medicine

BRIEF HISTORY

49 가 1 가 . 가 .
 CT AE3(high molecular weight cytokeratin) vimentin
 가 , spindle cell type malignant , AE1 (low molecular weight cytokeratin), CK19
 tumor가 .
 AST/ALT 24/19 IU/L,
 alkaline phosphatase 114 IU/L, total bilirubin
 0.6 mg/dL, HBsAg(-), anti-HBs(-) .

GROSS FINDING

6x4cm 가

MICROSCOPIC FINDING

가

Figure 1. Gross feature of sarcomatoid hepatocellular carcinoma in cirrhotic liver. A well defined mass of spreading infiltrative growth showing central extensive necrosis.

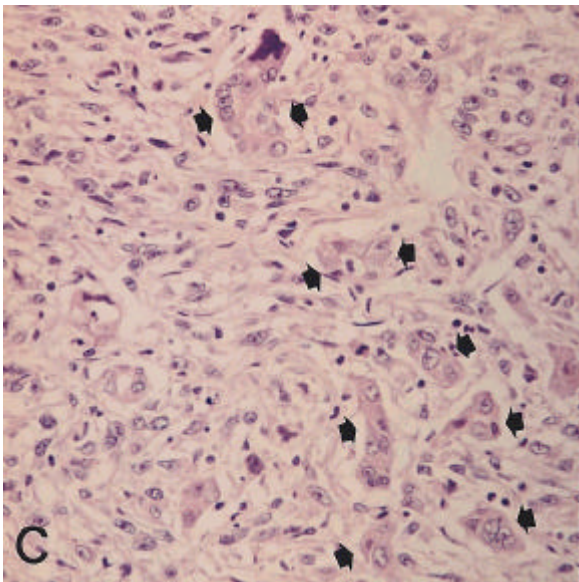
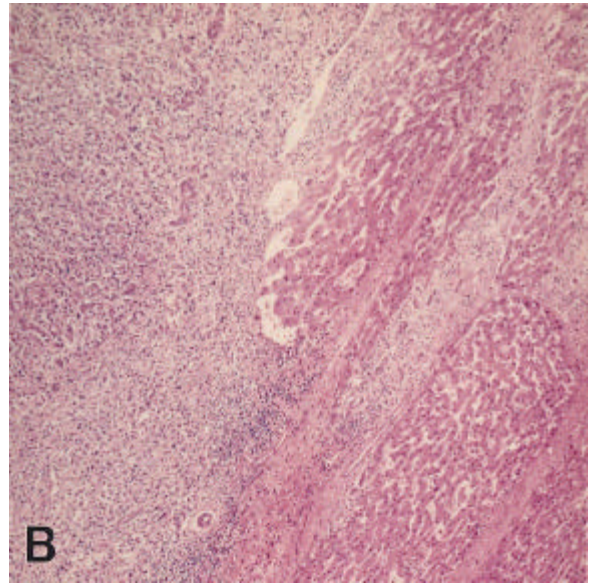
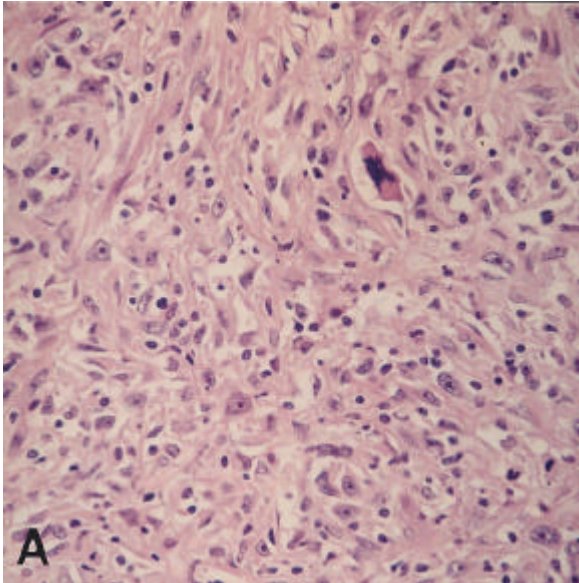


Figure 2. Microscopic feature of sarcomatoid hepatocellular carcinoma (HCC). Sarcomatoid HCC is composed of non-adhesive spindle shaped or fusiform cells with oval-to-round pleomorphic nuclei, prominent nucleoli and frequent mitosis (A). The periphery of the tumor shows sinusoidal infiltrative growth and entrapped non-neoplastic hepatocytes and bile ducts (arrows) are found among the tumor cells (B & C) (H&E).

carcinoembryonic antigen, -FP, factor VIII, CD34, CD68

DIAGNOSIS

- Sarcomatoid hepatocellular carcinoma, infiltrative spreading growth type
- Cirrhosis, macro- and micro- nodular

COMMENT

- Sarcomatoid hepatocellular carcinoma (HCC)
 - FP 가
 - HCC
 - , sarcomatoid HCC
 - HCC 가 가

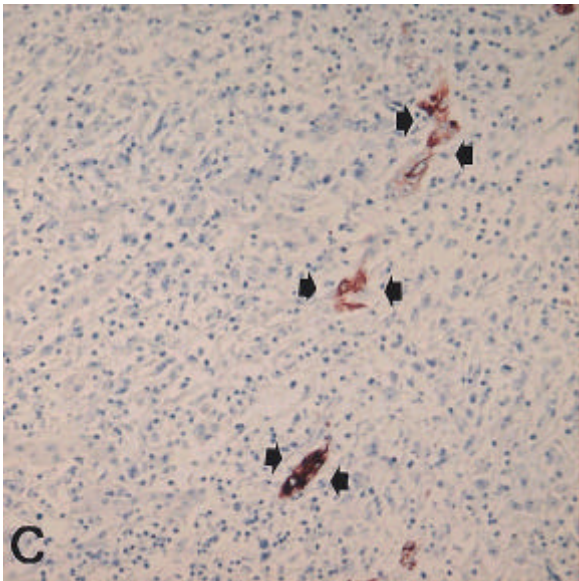
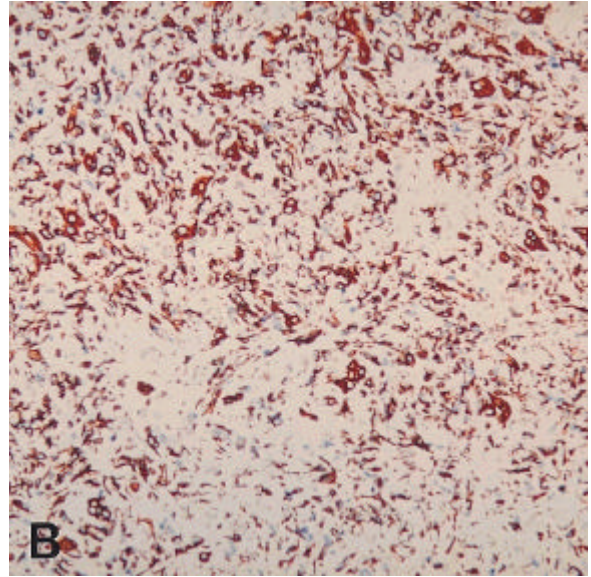
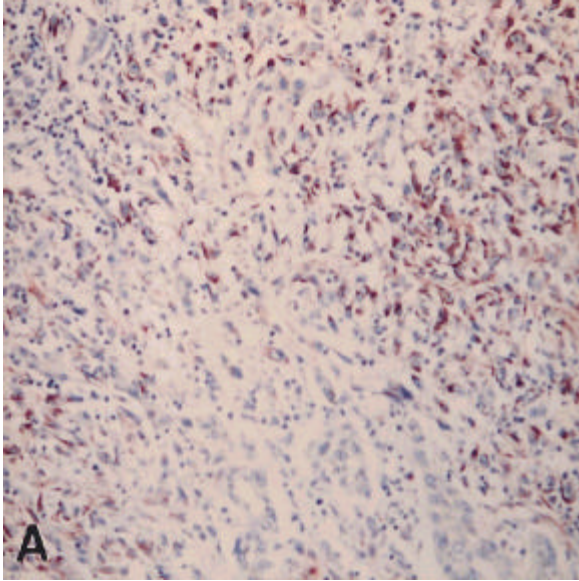


Figure 3. Immunohistochemical staining of sarcomatoid hepatocellular carcinoma. A. The tumor showing a diffuse positive expression of vimentin. B. Both tumor cells and entrapped hepatocytes and bile ducts showing a strong positive reaction to high molecular weight cytokeratin (AE3). C. Immunohistochemical stain for low molecular weight cytokeratin (AE1) showing a negative reaction in tumor cells and a positive reaction in the entrapped bile ducts (arrows) (LSAB).

• Sarcomatoid HCC spindle cell anaplastic tumor cell
 HCC 가
 , 가
 가
 가
 , angiosarcoma, hem-
 angioendothelioma CD31,
 CD34, factor VIII vascular marker

• Sarcomatoid HCC advanced HCC 4%
 small HCC
 chemoembolization
 sarcomatoid HCC HCC

1. Kakizoe S, Kojiro M, Nakashima T. Hepatocellular carcinoma with sarcomatous change: clinicopathologic and immunohistochemical studies of 14 autopsy cases. *Cancer* 1987; 59:310-316.
2. Maeda T, Adachi E, Kajiyama K, et al. Spindle cell hepatocellular carcinoma. A clinicopathologic and immunohistochemical analysis of 15 cases. *Cancer* 1995;77:51-57.
3. Kojiro M, Sugihara S, Kakizoe S, et al. Hepatocellular carcinoma with sarcomatous change: a special reference to the relationship with anticancer therapy. *Cancer Chemother Pharmacol* 1989;23(suppl):4-8.
4. Han JH, Park YN, Jung WH, et al. A case with sarcomatoid hepatocellular carcinoma. *Yonsei Med J* 1998; 39:390-394.