

## Retrospective Study

**Comparison of efficacy and safety between standard-dose and modified-dose FOLFIRINOX as a first-line treatment of pancreatic cancer**

Huapyeong Kang, Jung Hyun Jo, Hee Seung Lee, Moon Jae Chung, Seungmin Bang, Seung Woo Park, Si Young Song, Jeong Youp Park

Huapyeong Kang, Jung Hyun Jo, Hee Seung Lee, Moon Jae Chung, Seungmin Bang, Seung Woo Park, Si Young Song, Jeong Youp Park, Division of Gastroenterology, Department of Internal Medicine, Yonsei University College of Medicine, Seodaemun-gu, Seoul 03722, South Korea

ORCID number: Huapyeong Kang (0000-0003-1790-0809); Jung Hyun Jo (0000-0002-2641-8873); Hee Seung Lee (0000-0002-2825-3160); Moon Jae Chung (0000-0002-5920-8549); Seungmin Bang (0000-0001-5209-8351); Seung Woo Park (0000-0001-8230-964X); Si Young Song (0000-0002-1417-4314); Jeong Youp Park (0000-0003-0110-8606).

**Author contributions:** Kang H and Park JY led the study design; the study was supervised by Park JY. Kang H, Jo JH, Lee HS, Chung MJ, Bang S, Park SW, Song SY, and Park JY were contributed to the collection and assembly of data; Kang H did the data analysis; all authors interpreted the analyzed data; Kang H and Park JY wrote the manuscript; all authors reviewed every version of the manuscript and approved the final manuscript.

**Institutional review board statement:** This study was approved by the Institutional Review Board of Yonsei University Health System (Approval number: 4-2017-0757) and carried out in accordance with the Declaration of Helsinki.

**Informed consent statement:** The institutional review board waived the need for consent for this study due to its retrospective design.

**Conflict-of-interest statement:** All authors declare no conflicts-of-interest related to this article.

**Data sharing statement:** No additional data are available.

**Open-Access:** This is an open-access article which was selected by an in-house editor and fully peer-reviewed by external reviewers. It is distributed in accordance with the Creative Commons Attribution Non Commercial (CC BY-NC 4.0) license, which permits others to distribute, remix, adapt, build upon this

work non-commercially, and license their derivative works on different terms, provided the original work is properly cited and the use is non-commercial. See: <http://creativecommons.org/licenses/by-nc/4.0/>

**Manuscript source:** Invited manuscript

**Correspondence to:** Jeong Youp Park, MD, PhD, Associate Professor, Division of Gastroenterology, Department of Internal Medicine, Yonsei University College of Medicine, 50-1 Yonsei-ro, Seodaemun-gu, Seoul 03722, South Korea. [sensass@yuhs.ac](mailto:sensass@yuhs.ac)  
**Telephone:** +82-2-22281982  
**Fax:** +82-2-3936884

**Received:** August 6, 2018

**Peer-review started:** August 7, 2018

**First decision:** August 31, 2018

**Revised:** September 7, 2018

**Accepted:** October 10, 2018

**Article in press:** October 10, 2018

**Published online:** November 15, 2018

**Abstract****AIM**

To directly compare the efficacy and toxicity of standard-dose FOLFIRINOX (sFOLFIRINOX) and modified-dose FOLFIRINOX (mFOLFIRINOX, 75% of standard-dose) for pancreatic cancer.

**METHODS**

One hundred and thirty pancreatic cancer patients who received sFOLFIRINOX ( $n = 88$ ) or mFOLFIRINOX ( $n = 42$ ) as their first-line chemotherapy from January 2013 to July 2017 were retrospectively reviewed. For efficacy analysis, the objective response rate (ORR),

disease control rate (DCR), progression-free survival (PFS), and overall survival (OS) were evaluated and compared using Pearson's chi-square test, Kaplan-Meier plot and log-rank test. The adverse events (AEs) were evaluated, and severe ( $\geq$  grade 3) AEs rates of the two groups were compared for toxicity analysis.

### RESULTS

The mFOLFIRINOX group included more female patients (30.7% *vs* 57.1%;  $P = 0.004$ ) and older patients [age (median), 57 *vs* 63.5;  $P = 0.018$ ] than the sFOLFIRINOX group. In the efficacy analysis, the ORR and DCR were not significantly different between the two groups (ORR: 39.8% *vs* 35.7%;  $P = 0.656$ ; DCR: 80.7% *vs* 83.3%;  $P = 0.716$ ). The median PFS and OS were also not different between the groups (PFS: 8.7 mo *vs* 8.1 mo,  $P = 0.272$ ; OS: 13.9 mo *vs* 13.7 mo,  $P = 0.476$ ). In the safety analysis with severe AEs, the rates of neutropenia (83.0% *vs* 66.7%;  $P = 0.044$ ), anorexia (48.9% *vs* 28.6%;  $P = 0.029$ ) and diarrhea (13.6% *vs* 0.0%;  $P = 0.009$ ) were markedly lower in the mFOLFIRINOX group.

### CONCLUSION

mFOLFIRINOX showed comparable efficacy but better safety compared to sFOLFIRINOX. If clinically necessary, initiating FOLFIRINOX with 75% of the standard-dose can alleviate toxicity concerns without compromising efficacy.

**Key words:** Dose modification; Adverse event; Pancreatic cancer; Adenocarcinoma; FOLFIRINOX; Chemotherapy

© The Author(s) 2018. Published by Baishideng Publishing Group Inc. All rights reserved.

**Core tip:** Although the efficacy of FOLFIRINOX for pancreatic cancer has been well demonstrated, its relatively high toxicity rate is an important concern. We aimed to directly compare the efficacy and toxicity of standard-dose FOLFIRINOX and modified-dose FOLFIRINOX (mFOLFIRINOX, 75% of standard-dose) for pancreatic cancer. One hundred and thirty patients with pancreatic cancer (standard: 88 *vs* modified: 42) were reviewed retrospectively. Response rates, progression-free survival, and overall survival were not different between both groups. However, severe adverse events such as neutropenia, anorexia and diarrhea were significantly lower in the mFOLFIRINOX group. If clinically necessary, initiating FOLFIRINOX with 75% of the standard-dose can alleviate toxicity concerns without compromising efficacy.

Kang H, Jo JH, Lee HS, Chung MJ, Bang S, Park SW, Song SY, Park JY. Comparison of efficacy and safety between standard-dose and modified-dose FOLFIRINOX as a first-line treatment of pancreatic cancer. *World J Gastrointest Oncol* 2018; 10(11): 421-430 Available from: URL: <http://www.wjgnet.com/1948-5204/full/v10/i11/421.htm> DOI: <http://dx.doi.org/10.4251/wjgo.v10.i11.421>

## INTRODUCTION

Pancreatic cancer (PC) is the fourth-most common cause of cancer deaths estimated in the United States<sup>[1]</sup>. It is also reported as the fifth-most common cause of cancer-related deaths in South Korea<sup>[2]</sup>. Despite the introduction of several novel regimens, the five-year survival rate for all stages of PC remains around ten percent<sup>[1,2]</sup>. These statistics are based on the fact that < 20% of newly diagnosed PC cases are suitable candidates for surgical resection, while disseminated disease was noted in > 50% of new cases<sup>[1]</sup>.

Ever since the survival benefit of gemcitabine in patients with advanced PC was reported, gemcitabine-based regimens have been primarily used for > twenty years<sup>[3-6]</sup>. Recently, a non-gemcitabine-based combination regimen comprising folinic acid (FA), 5-fluorouracil (5-FU), irinotecan, and oxaliplatin (FOLFIRINOX) was introduced for metastatic PC (MPC). In the PRODIGE4/ACCORD11 randomized phase III trial, FOLFIRINOX was associated with a significant survival benefit compared to gemcitabine monotherapy as the first-line therapy for patients with MPC<sup>[7]</sup>. Thereafter, several studies were conducted to determine the role of FOLFIRINOX in locally advanced PC (LAPC) or borderline resectable PC (BRPC), and meta-analysis reports showed promising improvements in median survivals and resection rates<sup>[8,9]</sup>. Consequently, FOLFIRINOX is recommended as a preferred front-line therapy for MPC in major up-to-date guidelines and on the list of options for BRPC or LAPC, although prospective randomized data are still lacking<sup>[10-12]</sup>.

However, the relatively high toxicity of FOLFIRINOX is still a concern. In the PRODIGE4/ACCORD11 trial, FOLFIRINOX showed higher severe toxicity rates than gemcitabine, particularly for grade three or four neutropenia in 45.7% of patients<sup>[7]</sup>. The National Comprehensive Cancer Network guidelines for PC restrict FOLFIRINOX to patients with Eastern Cooperative Oncology Group performance status (ECOG-PS) 0 or 1<sup>[12]</sup>. Owing to the high toxicity profile of FOLFIRINOX, several retrospective studies and phase II trials using modified-dose FOLFIRINOX (mFOLFIRINOX) were performed with variable modification strategies. This research showed improved safety profiles and comparable efficacy<sup>[13-17]</sup>. Nevertheless, clinical feasibility or optimal strategy for dose-modification of FOLFIRINOX still remains unclear, since previous studies on mFOLFIRINOX indirectly compared their results to those of the PRODIGE4/ACCORD11 trial. Direct comparative study between standard-dose FOLFIRINOX (sFOLFIRINOX) and mFOLFIRINOX is still lacking. Therefore, in this study, we directly compared the therapeutic efficacy and safety of sFOLFIRINOX and mFOLFIRINOX as first-line

chemotherapies for PC.

## MATERIALS AND METHODS

### Patient selection

All patients diagnosed with PC who received FOLFIRINOX as their first-line chemotherapy in Severance Hospital from January 2013 to July 2017 were retrospectively reviewed. The inclusion criteria were as follows: (1) patients over 19 years of age; (2) histologically- or cytologically-proven pancreatic adenocarcinoma; and (3) at least one measurable lesion in accordance with the Response Evaluation Criteria in Solid Tumors (RECIST), version 1.1<sup>[18]</sup>. The exclusion criteria were as follows: (1) discontinued FOLFIRINOX for any reason before the first response evaluation; (2) dose adjustment in the first cycle other than 75% of the standard-dose; (3) did not start the first cycle of FOLFIRINOX in Severance Hospital; (4) diagnosed other active malignancy at the same time as PC diagnosis; (5) administered another agent in combination with FOLFIRINOX; and (6) regularly administered granulocyte colony stimulating factor (G-CSF) for primary prophylaxis. All patients who met the inclusion criteria and did not meet the exclusion criteria were identified. These patients were divided into sFOLFIRINOX and mFOLFIRINOX groups according to their starting dose of FOLFIRINOX.

### Work-up and treatment

Pretreatment assessment was conducted for all patients. Appropriate imaging modalities were used for staging work-up, as needed. The specimen for histological or cytological confirmation of malignancy was obtained by endoscopic ultrasonography-guided fine needle aspiration, percutaneous biopsy, or exploratory laparotomy, as indicated. For each patient, the attending physician made a clinical decision on whether the first cycle should be initiated with sFOLFIRINOX or mFOLFIRINOX. sFOLFIRINOX comprised a 2 h intravenous infusion (IVF) of oxaliplatin 85 mg/m<sup>2</sup>, followed by a 90 min IVF of irinotecan 180 mg/m<sup>2</sup>. FA 400 mg/m<sup>2</sup> IVF was performed over 2 h after termination of irinotecan infusion. This was followed by a 5-FU 400 mg/m<sup>2</sup> bolus and 2400 mg/m<sup>2</sup> IVF for 46 h. Patients who received a standard dose at the first cycle were grouped as sFOLFIRINOX. Patients who started with a 75% of standard-dose based on the decision of the attending physician were grouped as mFOLFIRINOX. All patients were regularly administered 0.25 mg of palonosetron 30 min before oxaliplatin infusion for emesis prophylaxis. G-CSF was not used for primary prophylaxis of neutropenia, and was administered when grade three or four neutropenia or neutropenic fever occurred. FOLFIRINOX was repeated every 2 wk until evidence of progressive disease (PD), significant deterioration of patient condition, or patient unwillingness. Dose reduction or delay was at the treating physician's discretion and fully considered if the patient

did not appear to tolerate the dosage of the previous cycle.

### Assessment of treatment efficacy

Primary endpoints of this study were objective response rate (ORR) and disease control rate (DCR). Secondary endpoints were progression-free survival (PFS) and overall survival (OS). Treatment response was evaluated after every four cycles using computed tomography or magnetic resonance image. All imaging modalities were conducted and reviewed in compliance with the institutional standard protocols. According to the RECIST, responses were reported by a professional radiologist, and the final assessment was independently made by each attending physician. The best treatment response of each patient was recorded. The ORR included the rate of complete response (CR) and partial response (PR), while DCR was defined as a sum of ORR and the rate of stable disease (SD). For survival analysis, the patient's survival status, date of death, and date of last follow-up were recorded. The cut-off date of both survival and follow-up data was February 6, 2018. PFS was defined from the date of initiation of FOLFIRINOX to PD or death. The patients who survived and remained without PD were censored at the date of the last follow-up. Patients who missed a follow-up without PD and with < a 6-mo follow-up period were censored at 6 mo from treatment initiation, even if deaths were confirmed after that. If a treatment switch occurred without PD, such as curative resection, irreversible electroporation, or another chemotherapeutic regimen, the date of switching treatment was considered as the censoring point. OS was always defined from the date of initiation of FOLFIRINOX to death. Patients whose deaths were not confirmed were censored at the date of the last follow-up.

### Assessment of adverse events

Treatment-related AE was also included in the secondary endpoints of this study. During the period of chemotherapy, treatment-related adverse events (AEs) were monitored and recorded by the attending physicians at each visit. All of the patients' medical records on AEs were reviewed. The assessment of AEs was carried out in conformity with the National Cancer Institute Common Terminology Criteria for Adverse Events version 4.03<sup>[19]</sup>. AEs leading to dose-reduction or dose-delay were recorded separately.

### Statistical analysis

For comparing the variables of both groups, Mann-Whitney test was used for continuous variables and Pearson's  $\chi^2$  test or Fisher's exact test were used for categorical variables. For the analysis of survival data, the Kaplan-Meier method was used to estimate the median survival with a 95% confidence interval (CI) and the log-rank test was used for comparison. A

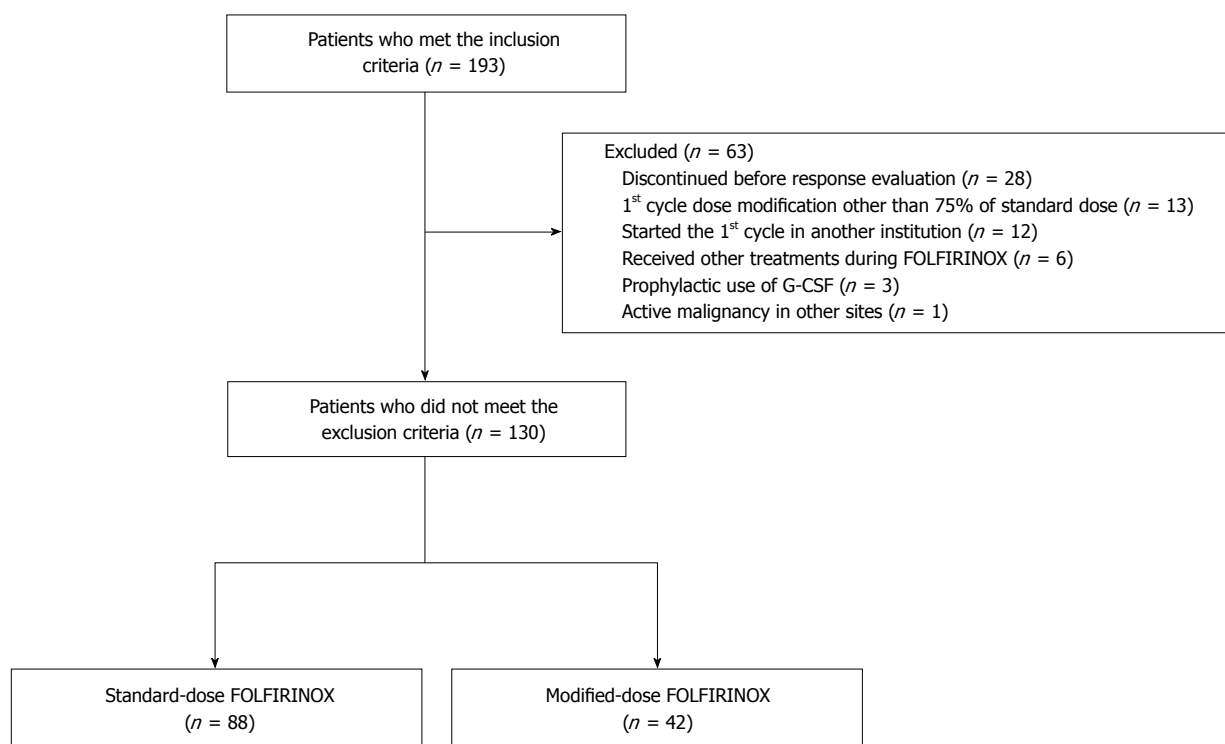


Figure 1 Flow chart of patient selection. G-CSF: granulocyte colony stimulating factor.

Cox proportional-hazards model was used to estimate the adjusted hazard ratios (HR).  $P$ -value  $< 0.05$  was considered statistically significant. All statistical analyses were performed with IBM SPSS (version 23.0, IBM Corp., Armonk, NY, United States).

## RESULTS

### Patients and pretreatment characteristics

In total, 130 patients were included in the final analysis based on the inclusion and exclusion criteria. Of the 130 patients, 88 were assigned to the sFOLFIRINOX group and 42 patients were assigned to the mFOLFIRINOX group. The detailed flow chart of patient selection is shown in Figure 1. When comparing the pretreatment characteristics, the mFOLFIRINOX group included more female patients (30.7% vs 57.1%;  $P = 0.004$ ) and older patients [age (median), 57 vs 63.5;  $P = 0.018$ ] than the sFOLFIRINOX group (Table 1). Other characteristics did not differ between the two groups.

### Treatment characteristics

The treatment characteristics are summarized in Table 2. The number of cycles administered and treatment duration were not different between the two groups. The median relative dose intensities (RDIs) of each of the four agents were significantly higher in the sFOLFIRINOX group than in the mFOLFIRINOX group. The proportion of patients who experienced dose-reduction after the first cycle was larger in the sFOLFIRINOX group than in the mFOLFIRINOX group

(70.5% vs 38.1%;  $P < 0.001$ ); however, the rate of dose delay was not different between the two groups. Dose reduction due to neutropenia was higher in the sFOLFIRINOX group (60.2% vs 21.4%;  $P < 0.001$ ), and, therefore, more patients were administered G-CSF (81.8% vs 64.3%;  $P = 0.028$ ) and more G-CSF administrations were performed during the treatment period [3.5 times (range: 0-24) vs 2 times (range: 0-12);  $P = 0.043$ ] than in the mFOLFIRINOX group.

### Treatment responses and survivals

The ORR and DCR (primary end-points of this study) were not different between the two groups (Table 3). The median duration of follow-up was 10.3 mo in the sFOLFIRINOX group and 11.1 mo in the mFOLFIRINOX group ( $P = 0.181$ ). The estimated median PFS of both groups were not different [sFOLFIRINOX: 8.7 mo (95%CI: 6.4-11.0) vs mFOLFIRINOX: 8.1 mo (95%CI: 6.7-9.6),  $P = 0.272$ ] (Figure 2A). The estimated median OS of the sFOLFIRINOX group was 13.9 mo (95%CI: 11.5-16.4), and it was not different from that of the mFOLFIRINOX group [13.7 mo (95%CI: 9.5-17.9),  $P = 0.476$ ] (Figure 2B). Additionally, age and sex-adjusted HRs of the mFOLFIRINOX group to the sFOLFIRINOX group were not statistically significant [HR for disease progression or death, 1.36 (95%CI: 0.81-2.26),  $P = 0.242$ ; HR for death, 0.94 (95%CI: 0.55-1.60),  $P = 0.813$ ].

### Treatment-related AEs

Severe (grade three or higher) treatment-related AEs

**Table 1** Pretreatment characteristics

	sFOLFIRINOX ( <i>n</i> = 88)	mFOLFIRINOX ( <i>n</i> = 42)	<i>P</i> value
Sex, <i>n</i> (%)			
Male	61 (69.3)	18 (42.9)	0.004 <sup>1</sup>
Female	27 (30.7)	24 (57.1)	
Age, yr			0.018 <sup>1</sup>
Median (range)	57 (31-79)	63.5 (41-77)	
ECOG-PS, <i>n</i> (%)			0.426
0	68 (77.3)	35 (83.3)	
1	20 (22.7)	7 (16.7)	
Laboratory test results, median (range)			
Absolute neutrophil count, / $\mu$ L	4200 (1610-11170)	4525 (2080-18930)	0.317
Hemoglobin, g/dL	12.3 (7.1-17.1)	12.1 (8.5-14.9)	0.36
Platelet count, $\times 10^3$ / $\mu$ L	218 (76-439)	245 (107-764)	0.247
Total bilirubin, mg/dL	0.7 (0.2-4.8)	0.5 (0.2-2.7)	0.144
Albumin, g/dL	3.9 (2.8-5.0)	3.9 (2.4-4.8)	0.797
Creatinine, mg/dL	0.67 (0.37-1.02)	0.70 (0.37-1.04)	0.516
Level of CA 19-9			
U/mL, median (range)	172.2 (0.6-20000.0)	455.5 (0.7-20000.0)	0.709
Normal, <i>n</i> (%)	17 (19.3)	11 (21.5)	
Elevated, $< 59 \times$ ULN, <i>n</i> (%)	53 (60.2)	19 (45.2)	0.274
Elevated, $\geq 59 \times$ ULN, <i>n</i> (%)	18 (20.5)	12 (28.6)	
Biliary drainage, <i>n</i> (%)			0.435
Presence	29 (33.0)	11 (26.2)	
Tumor location in pancreas, <i>n</i> (%)			
Head	40 (45.5)	16 (38.1)	0.657
Body and tail	44 (50.0)	23 (54.8)	
Recurrent	4 (4.5)	3 (7.1)	
Tumor size, cm			0.313
Median (range)	3.6 (1.3-7.7)	4.0 (1.3-8.0)	
Disease extent, <i>n</i> (%)			0.243
Borderline resectable	17 (19.3)	6 (14.3)	
Locally advanced	26 (29.5)	8 (19.0)	
Metastatic	45 (51.1)	28 (66.7)	
Stage, <i>n</i> (%)			0.248
II	24 (27.3)	8 (19.0)	
III	19 (21.6)	6 (14.3)	
IV	45 (51.1)	28 (66.7)	
Prior treatment, <i>n</i> (%)			
Naïve	75 (85.2)	33 (85.7)	0.941
Curative resection	4 (4.5)	4 (9.5)	0.272
CCRT	9 (10.2)	4 (9.5)	1.000

<sup>1</sup>Values indicate statistical significance. mFOLFIRINOX: Modified FOLFIRINOX; sFOLFIRINOX: Standard FOLFIRINOX; ECOG-PS: Eastern Cooperative Oncology Group performance status; ULN: Upper limit of normal range; CA: Carbohydrate antigen; CCRT: Concurrent chemoradiotherapy.

in the two groups are listed and compared in Table 4. Of the hematologic AEs, the rate of severe neutropenia was significantly lower in the mFOLFIRINOX group than in the sFOLFIRINOX group (83.0% vs 66.7%;  $P = 0.044$ ). Other hematologic AE rates, including febrile neutropenia, were not different. Severe anorexia and diarrhea occurred less frequently in the mFOLFIRINOX group than in the sFOLFIRINOX group (48.9% vs 28.6%;  $P = 0.029$ ; 13.6% vs 0.0%;  $P = 0.009$ ; respectively). All other non-hematologic severe AEs tended to occur less frequently in the mFOLFIRINOX group, with the exception of lung infection.

## DISCUSSION

In this study, we aimed to retrospectively compare the therapeutic efficacy and safety of sFOLFIRINOX

and mFOLFIRINOX as first-line chemotherapies for PC. To the best of our knowledge, this is the first direct comparative study that evaluated the efficacy and safety of sFOLFIRINOX and mFOLFIRINOX within a single institution. We observed that the median cycle and median duration of FOLFIRINOX were not different in both groups. Although the median RDI of all four agents were significantly less in the mFOLFIRINOX group, the therapeutic parameters such as ORR, DCR, OS, and PFS were not different between the two groups. Regarding the treatment-related AE profiles, severe neutropenia, anorexia, and diarrhea were remarkably lower in the mFOLFIRINOX group than in the sFOLFIRINOX group. Therefore, our study supports dose modification from the initiation of treatment without compromising treatment efficacy, particularly in elderly and female patients, who tend to show more



**Table 2 Treatment characteristics**

	<b>sFOLFIRINOX (n = 88)</b>	<b>mFOLFIRINOX (n = 42)</b>	<b>P value</b>
Number of cycles administered, median (range)	9.5 (4-24)	12 (4-32)	0.421
Treatment duration, d, median (range)	126 (42-322)	154 (42-434)	0.595
RDI to sFOLFIRINOX, %, median (range)			
Oxaliplatin	85.3 (56.3-100)	75.0 (51.1-75.0)	< 0.001 <sup>1</sup>
Irinotecan	85.0 (56.3-100)	75.0 (51.1-75.0)	< 0.001 <sup>1</sup>
5-FU (bolus)	92.1 (21.4-100)	75.0 (51.1-75.0)	< 0.001 <sup>1</sup>
5-FU (infusion)	94.1 (56.3-100)	75.0 (51.1-75.0)	< 0.001 <sup>1</sup>
Patients with $\geq$ 1 dose reduction, n (%)	62 (70.5)	16 (38.1)	< 0.001 <sup>1</sup>
Cause of dose reduction (> 5%), n (%)			
Neutropenia	53 (60.2)	9 (21.4)	< 0.001 <sup>1</sup>
Febrile neutropenia	10 (11.4)	4 (9.5)	1.000
Patients with $\geq$ 1 dose delay, n (%)	55 (62.5)	22 (52.4)	0.272
Cause of dose delay (> 5%), n (%)			
Neutropenia	16 (18.2)	5 (11.9)	0.363
Febrile neutropenia	16 (18.2)	5 (11.9)	0.363
Fatigue	7 (8.0)	8 (19.0)	0.081
No. of G-CSF administered, median (range)	3.5 (0-24)	2 (0-12)	0.043 <sup>1</sup>
Patients received G-CSF, n (%)	72 (81.8)	27 (64.3)	0.028 <sup>1</sup>

<sup>1</sup>Values indicate statistical significance. mFOLFIRINOX: Modified FOLFIRINOX; sFOLFIRINOX: Standard FOLFIRINOX; RDI: Relative dose intensity; 5-FU: 5-Fluorouracil; G-CSF: Granulocyte colony-stimulating factor.

**Table 3 Response evaluation n (%)**

	<b>sFOLFIRINOX (n = 88)</b>	<b>mFOLFIRINOX (n = 42)</b>	<b>P value</b>
CR	1 (1.1)	1 (2.4)	
PR	34 (38.6)	14 (33.3)	
SD	36 (40.9)	20 (47.6)	
PD	17 (19.3)	7 (16.7)	
Objective response <sup>a</sup>	35 (39.8)	15 (35.7)	0.656
Disease control <sup>b</sup>	71 (80.7)	35 (83.3)	0.716

<sup>a</sup>Objective response includes CR and PR; <sup>b</sup>Disease control includes CR, PR, and SD. mFOLFIRINOX: Modified FOLFIRINOX; sFOLFIRINOX: Standard FOLFIRINOX; CR: Complete response; PR: Partial response; SD: Stable disease; PD: Progressive disease.

concern about treatment-related toxicities.

Currently, FOLFIRINOX is a universally-used first-line treatment for MPC<sup>[20,21]</sup>, and it is also used for second-line or neoadjuvant treatment. Owing to its severe toxicities (grade  $\geq$  3 neutropenia in 45.7% of patients; grade  $\geq$  3 fatigue in 23.6% of patients) reported in the PRODIGE4/ACCORD11 trial<sup>[7]</sup>, treatment-related AE is a major concern when using FOLFIRINOX.

To reduce FOLFIRINOX-related toxicities, several groups have conducted studies focused on dose modification of FOLFIRINOX from the first cycle. Most of the FOLFIRINOX dose-modifying studies compared their results with the PRODIGE4/ACCORD11 trial. Retrospective research conducted in the UK using a reduced dose of irinotecan and omitting a 5-FU bolus reported a markedly lower rate of severe neutropenia than that in the historical trial, with similar rates of other severe AEs<sup>[15]</sup>. In a US phase II trial using reduced doses of irinotecan and 5-FU bolus, the rates of severe neutropenia and vomiting were significantly lower than the rates in the historical trial; however, other severe AEs were similar<sup>[17]</sup>. The toxicity of mFOLFIRINOX in this

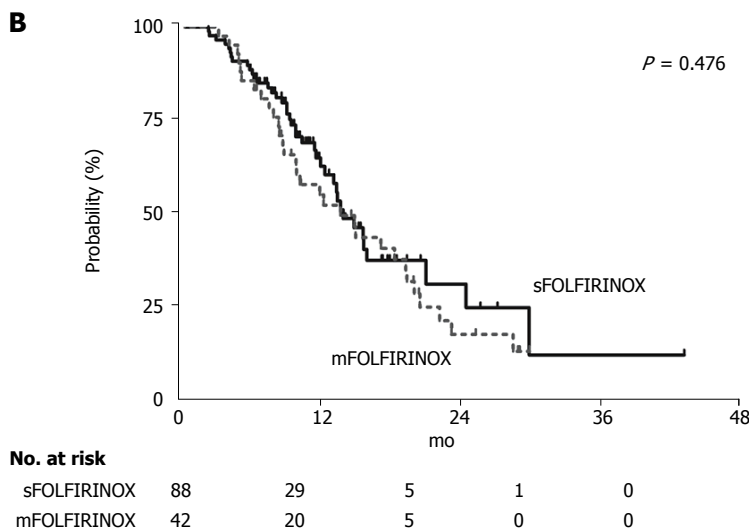
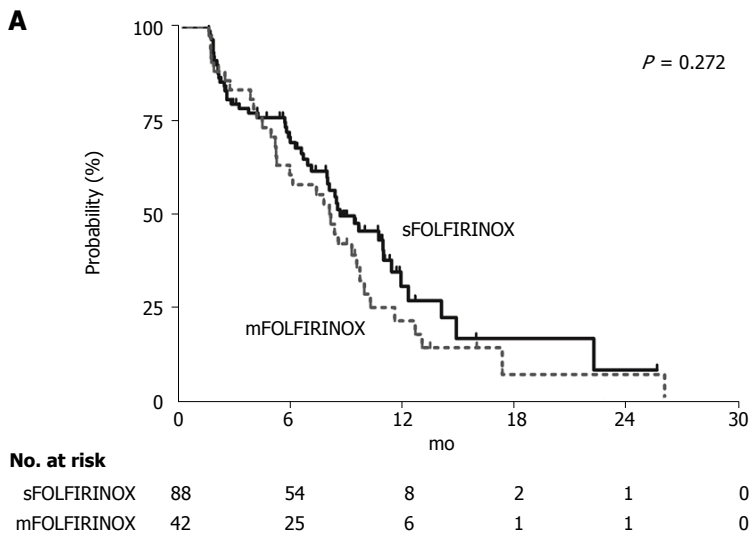
study was less severe than sFOLFIRINOX. In addition, compared with that of the historical trial, the rate of severe diarrhea was lower, but the rates of severe neutropenia, febrile neutropenia, anemia, and vomiting were still higher in the mFOLFIRINOX.

Regarding neutropenia, 77.8% of patients experienced severe neutropenia in a Japanese phase II study of sFOLFIRINOX for chemotherapy-naïve MPC, which is similar to our study's findings<sup>[22]</sup>. In addition, most studies conducted in Asian countries reported severe neutropenia in > 65% of patients<sup>[23-26]</sup>, which was more frequent than that in reports from western countries (11.0%-45.7%)<sup>[7,27-29]</sup>. These results suggest that Asians may be prone to severe FOLFIRINOX-related neutropenia, and dose adjustment is an option that should be considered when treating patients belonging to the Asian population. Unlike the present study, prophylactic G-CSF was routinely administered at every cycle in the aforementioned studies focusing on dose modification of FOLFIRINOX<sup>[13-17]</sup>. This distinction in therapeutic protocols should be considered when interpreting and comparing the rates of severe

**Table 4 Adverse events ( $\geq$  Grade 3) *n* (%)**

Event	sFOLFIRINOX ( <i>n</i> = 88)	mFOLFIRINOX ( <i>n</i> = 42)	<i>P</i> value
Hematologic			
Neutropenia	73 (83.0)	28 (66.7)	0.044 <sup>1</sup>
Febrile neutropenia	24 (27.3)	9 (21.4)	0.474
Anemia	19 (21.6)	11 (26.2)	0.561
Thrombocytopenia	8 (9.1)	2 (4.8)	0.499
Non-hematologic			
Fatigue	33 (37.5)	14 (33.3)	0.644
Anorexia	43 (48.9)	12 (28.6)	0.029 <sup>1</sup>
Nausea/Vomiting	53 (60.2)	19 (45.2)	0.108
Diarrhea	12 (13.6)	0 (0.0)	0.009 <sup>1</sup>
Peripheral sensory neuropathy	12 (13.6)	2 (4.8)	0.224
Sepsis	5 (5.7)	0 (0.0)	0.174
Lung infection	3 (3.4)	4 (9.5)	0.212
Biliary tract infection	6 (6.8)	0 (0.0)	0.176

<sup>1</sup>Values indicate statistical significance. mFOLFIRINOX: Modified FOLFIRINOX; sFOLFIRINOX: Standard FOLFIRINOX.



**Figure 2 Survival analyses and comparisons.** A: Progression-free survival; B: Overall survival, according to the treatment group. mFOLFIRINOX: Modified FOLFIRINOX; sFOLFIRINOX: Standard FOLFIRINOX.

neutropenia and neutropenic fever associated with mFOLFIRINOX in our study with those of prior research (67.9% vs 0%-12%; 26.4% vs 0%-5.6%; respectively).

Regarding efficacy, previous studies using a modified form of FOLFIRINOX showed 17.2%-46.7% of ORR and 80%-100% of DCR, which were similar to those of the PRODIGE4/ACCORD11 trial<sup>[13,15,17]</sup>. Our modification of FOLFIRINOX with 75% of the standard-dose was able to markedly reduce toxicity, and the efficacy was comparable with that of sFOLFIRINOX or previous studies, including the PRODIGE4/ACCORD11 trial. This therefore suggests that, in our study population, dose modification to reduce toxicity is possible without compromising treatment efficacy.

There are certain limitations to this study. First, it has a retrospective study design. Although we selected patients based on strict exclusion criteria, the possibility of selection bias and information bias remains. Second, we included patients with BRPC and unresectable PC. When comparing the survival data with other trials, this characteristic of the patient population should be considered. Third, more females and older patients were included in the mFOLFIRINOX group. These differences may be attributed to the clinical characteristics of the patient, based on whether or not the attending physician decides to administer mFOLFIRINOX from the first cycle. These differences may affect the treatment outcome. A previous study reported that female gender could positively predict response to FOLFIRINOX in patients with advanced PC<sup>[30]</sup>. However, the prognostic significance of gender in PC remains controversial and warrants further evaluation<sup>[31]</sup>. Despite these limitations, this study is meaningful because it directly compares the two study groups, which underwent similar clinical practice within a single institution.

In conclusion, mFOLFIRINOX showed comparable efficacy to sFOLFIRINOX, with a better toxicity profile. Given the relatively high toxicity of sFOLFIRINOX, initiating FOLFIRINOX treatment, if clinically required, with 75% of the standard-dose can be an appropriate option to reduce toxicity concerns without compromising efficacy.

## ARTICLE HIGHLIGHTS

### Research background

Although FOLFIRINOX is one of the universally-used chemotherapies for pancreatic cancer, its relatively high rate of adverse events is still a major concern. Several studies suggest that dose-modified FOLFIRINOX (mFOLFIRINOX) can improve safety with comparable efficacy compared to the standard FOLFIRINOX (sFOLFIRINOX). However, clinical feasibility and the optimal strategy of mFOLFIRINOX remains unclear.

### Research motivation

Previous studies on mFOLFIRINOX made conclusions based on comparing their results to the results of historical phase III trials of FOLFIRINOX. To date, direct comparative studies between sFOLFIRINOX and mFOLFIRINOX for pancreatic cancer is lacking.

### Research objectives

We directly compared the safety and efficacy of sFOLFIRINOX and

mFOLFIRINOX in a single study. This could help clarify the clinical applicability of mFOLFIRINOX.

### Research methods

The medical records of 130 pancreatic cancer patients [sFOLFIRINOX ( $n = 88$ ), mFOLFIRINOX ( $n = 42$ )] were retrospectively reviewed. The objective response rate (ORR), disease control rate (DCR), progression-free survival (PFS), and overall survival (OS) were compared for efficacy analysis. Severe ( $\geq$  grade three) adverse event (AE) rates of the two groups were compared for toxicity analysis.

### Research results

Although the median relative dose intensities of each of the drugs were significantly lower in the mFOLFIRINOX group, the response rates and survival were not different between the two groups (ORR: 39.8% vs 35.7%,  $P = 0.656$ ; DCR: 80.7% vs 83.3%,  $P = 0.716$ ; PFS: 8.7 mo vs 8.1 mo,  $P = 0.272$ ; OS: 13.9 mo vs 13.7 mo,  $P = 0.476$ ). Severe AE rates, including neutropenia (83.0% vs 66.7%;  $P = 0.044$ ), anorexia (48.9% vs 28.6%;  $P = 0.029$ ), and diarrhea (13.6% vs 0.0%;  $P = 0.009$ ), were significantly lower in the mFOLFIRINOX group.

### Research conclusions

In this direct comparative retrospective study, mFOLFIRINOX showed comparable efficacy to sFOLFIRINOX, with a better toxicity profile. Given the relatively high toxicity of sFOLFIRINOX, initiating FOLFIRINOX treatment, if clinically required, with 75% of the standard-dose could be an appropriate option to reduce toxicity concerns without compromising efficacy.

### Research perspectives

In the future, prospective comparative studies need to be conducted to determine the optimal dose modification of FOLFIRINOX and who will benefit from this strategy.

## REFERENCES

- 1 Siegel RL, Miller KD, Jemal A. Cancer statistics, 2017. *CA Cancer J Clin* 2017; **67**: 7-30 [PMID: 28055103 DOI:10.3322/caac.21387]
- 2 Jung KW, Won YJ, Oh CM, Kong HJ, Lee DH, Lee KH; Community of Population-Based Regional Cancer Registries. Cancer Statistics in Korea: Incidence, Mortality, Survival, and Prevalence in 2014. *Cancer Res Treat* 2017; **49**: 292-305 [PMID: 28279062 DOI: 10.4143/crt.2017.118]
- 3 Burris HA 3rd, Moore MJ, Andersen J, Green MR, Rothenberg ML, Modiano MR, Cripps MC, Portenoy RK, Storniolo AM, Tarassoff P, Nelson R, Dorr FA, Stephens CD, Von Hoff DD. Improvements in survival and clinical benefit with gemcitabine as first-line therapy for patients with advanced pancreas cancer: a randomized trial. *J Clin Oncol* 1997; **15**: 2403-2413 [PMID: 9196156 DOI: 10.1200/jco.1997.15.6.2403]
- 4 Heinemann V, Quietzsch D, Gieseler F, Gonnermann M, Schönekas H, Rost A, Neuhaus H, Haag C, Clemens M, Heinrich B, Vehling-Kaiser U, Fuchs M, Fleckenstein D, Gesierich W, Uthgenannt D, Einsele H, Holstege A, Hinke A, Schalhorn A, Wilkowski R. Randomized phase III trial of gemcitabine plus cisplatin compared with gemcitabine alone in advanced pancreatic cancer. *J Clin Oncol* 2006; **24**: 3946-3952 [PMID: 16921047 DOI: 10.1200/jco.2005.05.1490]
- 5 Moore MJ, Goldstein D, Hamm J, Figer A, Hecht JR, Gallinger S, Au HJ, Murawa P, Walde D, Wolff RA, Campos D, Lim R, Ding K, Clark G, Voskoglou-Nomikos T, Ptasynski M, Parulekar W; National Cancer Institute of Canada Clinical Trials Group. Erlotinib plus gemcitabine compared with gemcitabine alone in patients with advanced pancreatic cancer: a phase III trial of the National Cancer Institute of Canada Clinical Trials Group. *J Clin Oncol* 2007; **25**: 1960-1966 [PMID: 17452677 DOI: 10.1200/jco.2006.07.9525]
- 6 Von Hoff DD, Ervin T, Arena FP, Chiorean EG, Infante J, Moore M, Seay T, Tjulandina SA, Ma WW, Saleh MN, Harris M, Reni M, Dowden S, Laheru D, Bahary N, Ramanathan RK, Taberero



- J, Hidalgo M, Goldstein D, Van Cutsem E, Wei X, Iglesias J, Renschler MF. Increased survival in pancreatic cancer with nab-paclitaxel plus gemcitabine. *N Engl J Med* 2013; **369**: 1691-1703 [PMID: 24131140 DOI: 10.1056/NEJMoa1304369]
- 7 **Conroy T**, Desseigne F, Ychou M, Bouché O, Guimbaud R, Bécauarn Y, Adenis A, Raoul JL, Gourgou-Bourgade S, de la Fouchardière C, Bannoun J, Bachet JB, Khemissa-Akouz F, Péré-Vergé D, Delbaldo C, Assenet E, Chauffert B, Michel P, Montoto-Grillot C, Ducreux M; Groupe Tumeurs Digestives of Unicancer; PRODIGE Intergroup. FOLFIRINOX versus gemcitabine for metastatic pancreatic cancer. *N Engl J Med* 2011; **364**: 1817-1825 [PMID: 21561347 DOI: 10.1056/NEJMoa1011923]
  - 8 **Petrelli F**, Coiu A, Borgonovo K, Cabiddu M, Ghilardi M, Lonati V, Aitini E, Barni S; Gruppo Italiano per lo Studio dei Carcinomi dell'Apparato Digerente (GISCAD). FOLFIRINOX-based neoadjuvant therapy in borderline resectable or unresectable pancreatic cancer: a meta-analytical review of published studies. *Pancreas* 2015; **44**: 515-521 [PMID: 25872127 DOI: 10.1097/MPA.0000000000000314]
  - 9 **Suker M**, Beumer BR, Sadot E, Marthey L, Faris JE, Mellon EA, El-Rayes BF, Wang-Gillam A, Lacy J, Hosein PJ, Moorcraft SY, Conroy T, Hohla F, Allen P, Taieb J, Hong TS, Shridhar R, Chau I, van Eijck CH, Koerkamp BG. FOLFIRINOX for locally advanced pancreatic cancer: a systematic review and patient-level meta-analysis. *Lancet Oncol* 2016; **17**: 801-810 [PMID: 27160474 DOI: 10.1016/S1470-2045(16)00172-8]
  - 10 **Ducreux M**, Cuhna AS, Caramella C, Hollebecque A, Burtin P, Goéré D, Seufferlein T, Haustermans K, Van Laethem JL, Conroy T, Arnold D; ESMO Guidelines Committee. Cancer of the pancreas: ESMO Clinical Practice Guidelines for diagnosis, treatment and follow-up. *Ann Oncol* 2015; **26** Suppl 5: v56-v68 [PMID: 26314780 DOI: 10.1093/annonc/mdv295]
  - 11 **Sohal DP**, Mangu PB, Khorana AA, Shah MA, Philip PA, O'Reilly EM, Uronis HE, Ramanathan RK, Crane CH, Engebretson A, Ruggiero JT, Copur MS, Lau M, Urba S, Laheru D. Metastatic Pancreatic Cancer: American Society of Clinical Oncology Clinical Practice Guideline. *J Clin Oncol* 2016; **34**: 2784-2796 [PMID: 27247222 DOI: 10.1200/JCO.2016.67.1412]
  - 12 **Tempero MA**, Malafa MP, Al-Hawary M, Asbun H, Bain A, Behrman SW, Benson AB 3rd, Binder E, Cardin DB, Cha C, Chiorean EG, Chung V, Czito B, Dillhoff M, Dotan E, Ferrone CR, Hardacre J, Hawkins WG, Herman J, Ko AH, Komanduri S, Koong A, LoConte N, Lowy AM, Moravek C, Nakakura EK, O'Reilly EM, Obando J, Reddy S, Scaife C, Thayer S, Weekes CD, Wolff RA, Wolpin BM, Burns J, Darlow S. Pancreatic Adenocarcinoma, Version 2.2017, NCCN Clinical Practice Guidelines in Oncology. *J Natl Compr Canc Netw* 2017; **15**: 1028-1061 [PMID: 28784865 DOI: 10.6004/jncn.2017.0131]
  - 13 **Mahaseth H**, Brucher E, Kauh J, Hawk N, Kim S, Chen Z, Kooby DA, Maithel SK, Landry J, El-Rayes BF. Modified FOLFIRINOX regimen with improved safety and maintained efficacy in pancreatic adenocarcinoma. *Pancreas* 2013; **42**: 1311-1315 [PMID: 24152956 DOI: 10.1097/MPA.0b013e31829e2006]
  - 14 **Blazer M**, Wu C, Goldberg RM, Phillips G, Schmidt C, Muscarella P, Wuthrick E, Williams TM, Reardon J, Ellison EC, Bloomston M, Bekaii-Saab T. Neoadjuvant modified (m) FOLFIRINOX for locally advanced unresectable (LAPC) and borderline resectable (BRPC) adenocarcinoma of the pancreas. *Ann Surg Oncol* 2015; **22**: 1153-1159 [PMID: 25358667 DOI: 10.1245/s10434-014-4225-1]
  - 15 **Ghorani E**, Wong HH, Hewitt C, Calder J, Corrie P, Basu B. Safety and Efficacy of Modified FOLFIRINOX for Advanced Pancreatic Adenocarcinoma: A UK Single-Centre Experience. *Oncology* 2015; **89**: 281-287 [PMID: 26372905 DOI: 10.1159/000439171]
  - 16 **Nanda RH**, El-Rayes B, Maithel SK, Landry J. Neoadjuvant modified FOLFIRINOX and chemoradiation therapy for locally advanced pancreatic cancer improves resectability. *J Surg Oncol* 2015; **111**: 1028-1034 [PMID: 26073887 DOI: 10.1002/jso.23921]
  - 17 **Stein SM**, James ES, Deng Y, Cong X, Kortmansky JS, Li J, Staugaard C, Indukala D, Boustani AM, Patel V, Cha CH, Salem RR, Chang B, Hochster HS, Lacy J. Final analysis of a phase II study of modified FOLFIRINOX in locally advanced and metastatic pancreatic cancer. *Br J Cancer* 2016; **114**: 737-743 [PMID: 27022826 DOI: 10.1038/bjc.2016.45]
  - 18 **Eisenhauer EA**, Therasse P, Bogaerts J, Schwartz LH, Sargent D, Ford R, Dancey J, Arbuck S, Gwyther S, Mooney M, Rubinstein L, Shankar L, Dodd L, Kaplan R, Lacombe D, Verweij J. New response evaluation criteria in solid tumours: revised RECIST guideline (version 1.1). *Eur J Cancer* 2009; **45**: 228-247 [PMID: 19097774 DOI: 10.1016/j.ejca.2008.10.026]
  - 19 **National Cancer Institute**. Common Terminology Criteria for Adverse Events (CTCAE). v4.03. ed. U.S. Department of Health and Human Services, National Institutes of Health, National Cancer Institute. 2010; Available from: [https://evs.nci.nih.gov/ftp1/CTCAE/CTCAE\\_4.03/](https://evs.nci.nih.gov/ftp1/CTCAE/CTCAE_4.03/)
  - 20 **Le N**, Vinci A, Schober M, Krug S, Javed MA, Kohlmann T, Sund M, Neesse A, Beyer G. Real-World Clinical Practice of Intensified Chemotherapies for Metastatic Pancreatic Cancer: Results from a Pan-European Questionnaire Study. *Digestion* 2016; **94**: 222-229 [PMID: 28030863 DOI: 10.1159/000453257]
  - 21 **Abrams TA**, Meyer G, Meyerhardt JA, Wolpin BM, Schrag D, Fuchs CS. Patterns of Chemotherapy Use in a U.S.-Based Cohort of Patients with Metastatic Pancreatic Cancer. *Oncologist* 2017; **22**: 925-933 [PMID: 28476943 DOI: 10.1634/theoncologist.2016-0447]
  - 22 **Okusaka T**, Ikeda M, Fukutomi A, Ioka T, Furuse J, Ohkawa S, Isayama H, Boku N. Phase II study of FOLFIRINOX for chemotherapy-naïve Japanese patients with metastatic pancreatic cancer. *Cancer Sci* 2014; **105**: 1321-1326 [PMID: 25117729 DOI: 10.1111/cas.12501]
  - 23 **Kobayashi N**, Shimamura T, Tokuhisa M, Goto A, Endo I, Ichikawa Y. Effect of FOLFIRINOX as second-line chemotherapy for metastatic pancreatic cancer after gemcitabine-based chemotherapy failure. *Medicine (Baltimore)* 2017; **96**: e6769 [PMID: 28489753 DOI: 10.1097/MD.0000000000006769]
  - 24 **Muranaka T**, Kuwatani M, Komatsu Y, Sawada K, Nakatsumi H, Kawamoto Y, Yuki S, Kubota Y, Kubo K, Kawahata S, Kawakubo K, Kawakami H, Sakamoto N. Comparison of efficacy and toxicity of FOLFIRINOX and gemcitabine with nab-paclitaxel in unresectable pancreatic cancer. *J Gastrointest Oncol* 2017; **8**: 566-571 [PMID: 28736643 DOI: 10.21037/jgo.2017.02.02]
  - 25 **Yoo C**, Kang J, Kim KP, Lee JL, Ryoo BY, Chang HM, Lee SS, Park DH, Song TJ, Seo DW, Lee SK, Kim MH, Park JH, Hwang DW, Song KB, Lee JH, Kim SC. Efficacy and safety of neoadjuvant FOLFIRINOX for borderline resectable pancreatic adenocarcinoma: improved efficacy compared with gemcitabine-based regimen. *Oncotarget* 2017; **8**: 46337-46347 [PMID: 28564637 DOI: 10.18632/oncotarget.17940]
  - 26 **Yoshida K**, Iwashita T, Uemura S, Maruta A, Okuno M, Ando N, Iwata K, Kawaguchi J, Mukai T, Shimizu M. A multicenter prospective phase II study of first-line modified FOLFIRINOX for unresectable advanced pancreatic cancer. *Oncotarget* 2017; **8**: 111346-111355 [PMID: 29340058 DOI: 10.18632/oncotarget.22795]
  - 27 **Marthey L**, Sa-Cunha A, Blanc JF, Gauthier M, Cuffe A, Francois E, Trouilloud I, Malka D, Bachet JB, Coriat R, Terreboune E, De La Fouchardière C, Manfredi S, Solub D, Lécaille C, Thiroit Bidault A, Carbonnel F, Taieb J. FOLFIRINOX for locally advanced pancreatic adenocarcinoma: results of an AGEO multicenter prospective observational cohort. *Ann Surg Oncol* 2015; **22**: 295-301 [PMID: 25037971 DOI: 10.1245/s10434-014-3898-9]
  - 28 **Chilamma MK**, Cook N, Dhani NC, Giby K, Dodd A, Wang L, Hedley DW, Moore MJ, Knox JJ. FOLFIRINOX for advanced pancreatic cancer: the Princess Margaret Cancer Centre experience. *Br J Cancer* 2016; **115**: 649-654 [PMID: 27467054 DOI: 10.1038/bjc.2016.222]
  - 29 **Faris JE**, Blaszkowsky LS, McDermott S, Guimaraes AR, Szymonifka J, Huynh MA, Ferrone CR, Wargo JA, Allen JN, Dias

- LE, Kwak EL, Lillemoe KD, Thayer SP, Murphy JE, Zhu AX, Sahani DV, Wo JY, Clark JW, Fernandez-del Castillo C, Ryan DP, Hong TS. FOLFIRINOX in locally advanced pancreatic cancer: the Massachusetts General Hospital Cancer Center experience. *Oncologist* 2013; **18**: 543-548 [PMID: 23657686 DOI: 10.1634/theoncologist.2012-0435]
- 30 **Hohla F**, Hopfinger G, Romeder F, Rinnerthaler G, Bezan A, Stättner S, Hauser-Kronberger C, Ulmer H, Greil R. Female gender may predict response to FOLFIRINOX in patients with unresectable pancreatic cancer: a single institution retrospective review. *Int J Oncol* 2014; **44**: 319-326 [PMID: 24247204 DOI: 10.3892/ijo.2013.2176]
- 31 **Lambert A**, Jarlier M, Gourgou Bourgade S, Conroy T. Response to FOLFIRINOX by gender in patients with metastatic pancreatic cancer: Results from the PRODIGE 4/ ACCORD 11 randomized trial. *PLoS One* 2017; **12**: e0183288 [PMID: 28931010 DOI: 10.1371/journal.pone.0183288]

**P- Reviewer:** Ouaiissi M, Raffaniello R, Sawaki A **S- Editor:** Ma RY  
**L- Editor:** Filipodia **E- Editor:** Tan WW





Published by **Baishideng Publishing Group Inc**  
7901 Stoneridge Drive, Suite 501, Pleasanton, CA 94588, USA  
Telephone: +1-925-223-8242  
Fax: +1-925-223-8243  
E-mail: [bpgoffice@wjgnet.com](mailto:bpgoffice@wjgnet.com)  
Help Desk: <http://www.f6publishing.com/helpdesk>  
<http://www.wjgnet.com>

