



Red Blood Cell Distribution Width Can Predict Vasculitis Activity and Poor Prognosis in Granulomatosis with Polyangiitis

Ho Jae Kim¹, Juyoung Yoo¹, Seung Min Jung¹, Jason Jungsik Song¹, Yong-Beom Park¹, and Sang-Won Lee^{1,2}

¹Division of Rheumatology, Department of Internal Medicine and ²Institute for Immunology and Immunological Diseases, Yonsei University College of Medicine, Seoul, Korea.

Purpose: We investigated whether red blood cell distribution width (RDW) predicts vasculitis activity based on Birmingham vasculitis activity score (BVAS) or BVAS for granulomatosis with polyangiitis (GPA) at diagnosis and poor prognosis during follow-up in patients with antineutrophil cytoplasmic antibody (ANCA)-associated vasculitis (AAV).

Materials and Methods: We reviewed the medical records of 150 patients with AAV. We defined severe GPA as BVAS for GPA ≥ 7 (the highest quartile). Correlation and standardised correlation coefficients were analysed by linear regression tests. The differences between groups were evaluated by Mann-Whitney test. Relative risk (RR) was assessed by chi square test and Cox hazards model.

Results: RDW was correlated only with the vasculitis activity of GPA among patients with AAV. An increase in RDW was associated with the absence of ear nose throat (ENT) manifestation, but not proteinase 3-ANCA. Significant differences were noted in cumulative refractory free survival according to RDW $\geq 15.4\%$ ($p=0.007$) and the absence of ENT manifestation ($p=0.036$). Multivariate Cox hazards analysis identified RDW $\geq 15.4\%$ as the only significant predictor of refractory disease in GPA (RR 17.573).

Conclusion: RDW predicts vasculitis activity in GPA, and RDW $\geq 15.4\%$ at diagnosis may increase the risk of severe GPA at diagnosis and predict refractory diseases during follow-up.

Key Words: Red blood cell distribution width, ANCA-associated vasculitis, granulomatosis with polyangiitis, vasculitis activity score, prognosis

INTRODUCTION

The 2012 revised International Chapel Hill Consensus Conference (CHCC) classifies systemic vasculitis affecting small vessels into two groups, immune complex small vessel vasculitis and antineutrophil cytoplasmic antibody (ANCA)-associated vasculitis (AAV). AAV is also categorised into three variants comprising microscopic polyangiitis (MPA), granulomatosis

with polyangiitis (GPA, also called Wegener's granulomatosis), and eosinophilic GPA (EGPA, also called Churg-Strauss syndrome).¹ Since MPA is not reflected in the classification criteria proposed by the American College Rheumatology (ACR),² MPA is currently classified by 2012 CHCC and the 2007 European Medicines Agency (EMA) classification,³ which includes 1) no fulfilment of the ACR classification criteria for GPA or EGPA,^{4,5} 2) clinical and histologic features compatible with small vessels vasculitis, 3) no GPA surrogate markers, 4) myeloperoxidase (MPO)-ANCA or proteinase 3 (PR3)-ANCA positivity, and 5) renal limited vasculitis.

In contrast to MPA, GPA and EGPA can be classified by the ACR classification criteria.^{4,5} GPA commonly affects respiratory tracts and kidneys, while EGPA is characterized by allergic features such as asthma and eosinophilia. The methods to evaluate the vasculitis activity of AAV includes Birmingham vasculitis activity score (BVAS),⁶ BVAS for GPA,⁷ disease extent index,⁸ and five factor score [FFS (1996) and FFS (2009)].^{9,10} Among them, BVAS or BVAS for GPA is the most widely used to assess

Received: September 18, 2017 **Revised:** December 4, 2017

Accepted: December 5, 2017

Corresponding author: Dr. Sang-Won Lee, Division of Rheumatology, Department of Internal Medicine, Institute for Immunology and Immunological Diseases, Yonsei University College of Medicine, 50-1 Yonsei-ro, Seodaemun-gu, Seoul 03722, Korea. Tel: 82-2-2228-1987, Fax: 82-2-393-6884, E-mail: sangwonlee@yuhs.ac

•The authors have no financial conflicts of interest.

© Copyright: Yonsei University College of Medicine 2018

This is an Open Access article distributed under the terms of the Creative Commons Attribution Non-Commercial License (<http://creativecommons.org/licenses/by-nc/4.0>) which permits unrestricted non-commercial use, distribution, and reproduction in any medium, provided the original work is properly cited.

the vasculitis activity of AAV.

Red blood cell (RBC) distribution width (RDW) is a routinely measured value of heterogeneity in the size of circulating RBCs. RDW is calculated from the coefficient of variation of RBC volume distribution as follows: $RDW = \text{standard deviation of RBC volume distribution} / \text{mean corpuscular volume (MCV)} \times 100$. RDW is clinically used to differentiate between different types of anaemia.¹¹ When RDW is elevated, low MCV suggests iron deficiency, while high MCV implies folate or vitamin B₁₂ deficiency and immune haemolytic anaemia. When RDW is normal, normal MCV favours chronic disease, while high MCV represents aplastic anaemia.¹¹ Meanwhile, RDW has been considered to be associated with disease activity or prognosis of various inflammatory diseases including rheumatic diseases.¹²⁻¹⁵ To our best knowledge, there have been no reports regarding RDW in patients with AAV to date. Hence, in this study, we investigated whether RDW could predict not only vasculitis activity based on BVAS or BVAS for GPA at diagnosis, but also poor prognosis during follow-up in 150 patients with AAV.

MATERIALS AND METHODS

Patients

We retrospectively reviewed the electronic medical records of 150 patients with AAV registered in the Severance Hospital Autoimmune Vasculitides cohort according to the following inclusion criteria:¹⁶⁻¹⁹ 1) patients who had been initially diagnosed with MPA, GPA, or EGPA from October 2000 to January 2017 at the Division of Rheumatology, Department of Internal Medicine, Yonsei University College of Medicine, Severance Hospital; 2) patients who had been follow-up for more than 12 weeks after the first diagnosis of AAV in our institute; 3) patients who had fulfilled the 2012 revised CHCC or the 2007 EMA algorithm for MPA^{1,3} and who had met the ACR 1990 criteria for the classification for GPA and EGPA;^{4,5} 4) patients who had the initial results of MPO-ANCA or PR3-ANCA, but not ANCA by immunofluorescence assay [IFA, perinuclear (P)-ANCA and cytoplasmic (C)-ANCA], and those who did not have both ANCA; 5) patients who had not been accompanied by any medical conditions that would influence the positivity of MPO-ANCA or PR3-ANCA or RDW;^{11,20,21} 6) patients who had never received medications for medical conditions mentioned above upon searching by the Korean Drug Utilization Review (DUR) system at diagnosis; and 7) patients whose medical records contained accurate descriptions enough to calculate BVAS or BVAS for GPA and FFS (1996) and FFS (2009) on the same day of blood collection for laboratory tests at diagnosis.^{6,7,9,10} This study was approved by the Institutional Review Board of Severance Hospital (IRB no. 4-2017-0673).

Clinical and laboratory information

We collected age, gender, and the follow-up duration as demo-

graphic variables, and the follow-up duration was defined as the period from diagnosis to the date of the current study. Overall clinical items were similar between BVAS and BVAS for GPA, although detailed differed. Thus, we obtained organ-based clinical information, such as general, cutaneous, mucous membrane and eye, ear nose throat (ENT), cardiovascular, gastrointestinal, pulmonary, renal, and nervous systemic manifestations.^{6,7} Laboratory data included white blood cell, haemoglobin, RDW, prothrombin time (international normalised ratio), fasting glucose, blood urea nitrogen, creatinine, protein, serum albumin, alkaline phosphatase, aspartate aminotransferase, alanine aminotransferase, total cholesterol, erythrocyte sedimentation rate (ESR), and C-reactive protein (CRP).

Vasculitis activity and definition of severe GPA and disease course

The vasculitis activity of MPA and EGPA was assessed using BVAS and that of GPA was done using BVAS for GPA.^{6,7} Also, we searched clinical and laboratory features belonging to items of FFS (1996), as well as FFS (2009).^{9,10} In this study, the highest quartile of BVAS for GPA was 7 or greater, and we defined severe GPA as BVAS for GPA ≥ 7 . We previously reported that BVAS ≥ 9.5 at diagnosis is associated with refractory disease in Korean patients with GPA.¹⁷ However, because we focused on the potential of RDW to reflect cross-sectional activity of GPA, rather than predict refractory disease of GPA, we set the cut-off of BVAS for severe disease at 7, the highest quartile of BVAS for GPA. Remission was defined as absence of disease activity attributable to active disease qualified by the need for on-going stable maintenance immunosuppressive therapy. Relapse was defined as recurrence or new onset of disease attributable to active vasculitis. Refractory disease was defined as unchanged or increased disease activity in acute vasculitis after 4 weeks of treatment with standard therapy or lack of response or chronic and persistent disease after over 12 weeks of treatment.²²

ANCA measurement

MPO-ANCA and PR3-ANCA were measured by ELISA kits for anti-PR3 and anti-MPO (Inova Diagnostics, San Diego, CA, USA) before 2013, and by the novel anchor coated highly sensitive Phadia ELiA (Thermo Fisher Scientific/Phadia, Freiburg, Germany) using human native antigens, performed on a Phadia250 analyser after 2013.

Statistical analysis

Continuous variables are expressed as means \pm standard deviations, and categorical variables are reported as numbers (percentages). Correlations between RDW and other continuous variables were analysed by univariate Pearson's correlation analysis. Standardised correlation coefficients between BVAS for GPA and other continuous variables were assessed by multivariate linear regression analysis using variables with significant differences in univariate analysis. The optimal cut-off of

RDW was extrapolated via calculating the area under the receiver operator characteristic curve (AUROC) and selected when the sum of sensitivity and specificity was maximised. In addition, relative risk (RR) of RDW under the initial BVAS for GPA ≥ 7 was evaluated using contingency tables and the chi square test. Significant differences in RDW between the presence and the absence of clinical manifestations and ANCA types were evaluated by the Mann-Whitney test. Due to the small number of subjects, we also applied univariate and multivariate Cox hazards models using variables with statistical significance to appropriately obtain RR. Kaplan-Meier survival analysis was used to analyse cumulative refractory disease free survival rate. All statistical analyses were conducted using SPSS software (version 23 for windows; IBM Corp., Armonk, NY, USA). *p*-values less than 0.05 were considered statistically significant.

RESULTS

Baseline characteristics of 150 patients with AAV

The baseline characteristics are described in Table 1. The mean age of the 150 patients [47 men (31.3%)] was 58.8 years old, and the mean follow-up duration was 49.8 months. Eighty-seven patients (58.0%) were classified as MPA, 32 (21.3%) as GPA, and 31 (20.7%) as EGPA. Renal manifestation (56.0%) was the most frequently observed manifestation at diagnosis, followed by pulmonary manifestation (50.7%), general manifestation (46.0%), and ENT manifestation (38.7%). The mean BVAS or BVAS for GPA was 12.6, and the mean FFS (1996) and FFS (2009) were 0.7 and 1.6, respectively. Ninety-five patients (63.3%) had achieved remission without relapse, while 49 patients (32.7%) had ever experienced relapse after remission. Also 6 patients (4.0%) with GPA had never achieved remission during the disease course. MPO-ANCA was detected in 104 patients (69.3%) and PR3-ANCA was found in 26 patients (17.3%). Twenty patients had neither MPO-ANCA nor PR3-ANCA. The mean RDW was 14.3%, and the mean ESR and CRP values were 57.8 mm/hr and 29.0 mg/L, respectively.

Correlation between RDW and other variables in all patients with AAV at diagnosis

Overall, RDW was not correlated with BVAS or BVAS for GPA in all AAV patients. However, when we categorised them into each variant of AAV, RDW was significantly correlated with BVAS for GPA in only GPA patients ($r=0.461$, $p=0.008$). Among other laboratory results, RDW was negatively correlated with protein ($r=-0.261$, $p=0.001$) and serum albumin ($r=-0.183$, $p=0.025$) levels, while it was positively correlated with blood urea nitrogen ($r=0.166$, $p=0.042$). RDW tended to be correlated with haemoglobin, but was not significant. There was no significant correlation between RDW and ESR or CRP (Table 2).

Table 1. Baseline Characteristics of Patients with ANCA-associated Vasculitis (n=150)

Variables	Values
Demographic data	
Age at diagnosis (yr)	58.8±16.1
Male gender, n (%)	47 (31.3)
Follow-up duration (yr)	49.8±46.4
Diagnosis, n (%)	
Microscopic polyangiitis	87 (58.0)
Granulomatosis with polyangiitis	32 (21.3)
Eosinophilic granulomatosis with polyangiitis	31 (20.7)
Clinical manifestations at diagnosis, n (%)	
General manifestations	69 (46.0)
Cutaneous manifestations	43 (28.7)
Mucous membranes/eyes manifestations	14 (9.3)
Ear nose throat manifestations	58 (38.7)
Cardiovascular manifestations	36 (24.0)
Gastrointestinal manifestations	9 (6.0)
Pulmonary manifestations	76 (50.7)
Renal manifestations	84 (56.0)
Nervous systemic manifestations	48 (32.0)
BVAS, BVAS for GPA and FFS at diagnosis	
BVAS or BVAS for GPA	12.6±7.6
FFS (1996)	0.7±0.9
FFS (2009)	1.6±0.9
Disease course, n (%)	
Remission and no relapse	95 (63.3)
Relapse after remission	49 (32.7)
Refractory disease (all GPA patients)	6 (4.0)
ANCA type at diagnosis, n (%)	
MPO-ANCA	104 (69.3)
PR3-ANCA	26 (17.3)
ANCA negative	20 (13.3)
RDW at diagnosis (%)	14.3±2.4
Laboratory results at diagnosis	
White blood cell (/mm ³)	10190.1±4815.7
Haemoglobin (g/dL)	11.7±2.1
Platelet ($\times 10^3$ /mm ³)	317.0±132.6
Prothrombin time (INR) (n=116)	1.0±0.2
Fasting glucose (mg/dL)	115.1±42.2
Blood urea nitrogen (mg/dL)	24.5±24.1
Creatinine (mg/dL)	1.7±1.9
Protein (g/dL)	6.8±1.0
Serum albumin (g/dL)	3.6±0.8
Alkaline phosphatase (IU/L)	90.6±82.8
Aspartate aminotransferase (IU/L)	24.7±25.7
Alanine aminotransferase (IU/L)	22.4±28.2
Total cholesterol (mg/dL)	167.2±45.3
Acute reactants at diagnosis	
ESR (mm/hr)	57.8±37.4
CRP (mg/L)	29.0±51.8

ANCA, antineutrophil cytoplasmic antibody; BVAS, Birmingham vasculitis activity score; FFS, five factor scores; MPO, myeloperoxidase; PR3, proteinase 3; RDW, red blood cell distribution width; INR, international normalised ratio; ESR, erythrocyte sedimentation rate; CRP, C-reactive protein. Values are expressed as a mean±standard deviation or n (%).

Correlation between RDW and other variables in patients with GPA at diagnosis

In GPA patients, RDW was significantly correlated with BVAS for GPA ($r=0.461$, $p=0.008$), and furthermore, it showed meaningful correlations with FFS (1996) ($r=0.455$, $p=0.009$) and FFS (2009) ($r=0.553$, $p=0.001$). Among other laboratory results, RDW was negatively correlated with protein ($r=-0.389$, $p=0.028$), but not with haemoglobin. Similar to all patients with AAV, GPA patients exhibited no remarkable correlation between RDW and ESR or CRP (Table 3).

Univariate and multivariate linear regression analyses of BVAS for GPA and other variables in patients with GPA at diagnosis

Univariate linear regression analysis showed that BVAS for

Table 2. Correlation Coefficient between Red Blood Cell Distribution Width and Other Continuous Variables in Patients with ANCA-associated Vasculitis (n=150)

Variables	Correlation coefficient (R=β)	p value
Demographic data		
Age at diagnosis	0.135	0.099
Follow-up duration	0.103	0.211
BVAS, BVAS for GPA and FFS at diagnosis		
BVAS or BVAS for GPA for AAV	0.060	0.469
Based on diagnosis		
BVAS of MPA	0.044	0.684
BVAS for GPA of GPA	0.461	0.008
BVAS of EGPA	0.204	0.272
FFS (1996)	0.131	0.111
FFS (2009)	0.156	0.057
Laboratory results at diagnosis		
White blood cell	0.051	0.537
Haemoglobin	-0.158	0.054
Platelet	0.005	0.949
Prothrombin time (INR) (n=116)	0.189	0.053
Fasting glucose	0.014	0.865
Blood urea nitrogen	0.166	0.042
Creatinine	0.119	0.148
Protein	-0.261	0.001
Serum albumin	-0.183	0.025
Alkaline phosphatase	0.155	0.059
Aspartate aminotransferase	0.121	0.142
Alanine aminotransferase	0.098	0.234
Total cholesterol	-0.077	0.350
Acute reactants at diagnosis		
ESR	0.028	0.738
CRP	0.046	0.581

ANCA, antineutrophil cytoplasmic antibody; BVAS, Birmingham vasculitis activity score; GPA, granulomatosis with polyangiitis; MPA, microscopic polyangiitis; EGPA, eosinophilic granulomatosis with polyangiitis; FFS, five factor scores; INR, international normalised ratio; ESR, erythrocyte sedimentation rate; CRP, C-reactive protein.

GPA was significantly correlated with RDW ($r=0.461$, $p=0.008$), and inversely correlated with creatinine ($r=0.349$, $p=0.049$). BVAS for GPA was also positively correlated with FFS (1996) ($r=0.734$, $p<0.001$) and FFS (2009) ($r=0.354$, $p=0.047$). Because FFS (1996) and FFS (2009) items partly overlap with BVAS for GPA items, we did not include FFS (1996) and FFS (2009) in multivariate linear regression analysis. Multivariate linear regression analysis determined that RDW was the only independent predictor of BVAS for GPA [$\beta=0.393$, 95% confidence interval (CI) 0.041–0.584, $p=0.025$] (Table 4).

Comparison of RDW between the presence and absence of each clinical aspect and ANCA types in patients with GPA at diagnosis

Among organ-based clinical manifestations, only patients with ENT symptoms had a lower mean RDW than those without (13.9% vs. 19.0%, $p=0.001$). However, there was no significant difference in RDW between the presence and absence of PR3-ANCA (Fig. 1).

Table 3. Correlation Coefficients between Red Blood Cell Distribution Width and Other Continuous Variables in Patients with GPA (n=32)

Variables	Correlation coefficient (R=β)	p value
Demographic data		
Age at diagnosis	0.174	0.342
Follow-up duration	-0.097	0.596
BVAS, BVAS for GPA and FFS at diagnosis		
BVAS for GPA	0.461	0.008
FFS (1996)	0.455	0.009
FFS (2009)	0.553	0.001
Laboratory results at diagnosis		
White blood cell	-0.046	0.803
Haemoglobin	0.014	0.941
Platelet	-0.085	0.643
Prothrombin time (INR)	0.141	0.576
Fasting glucose	0.138	0.450
Blood urea nitrogen	0.053	0.774
Creatinine	0.292	0.105
Protein	-0.389	0.028
Serum albumin	-0.054	0.770
Alkaline phosphatase	0.121	0.508
Aspartate aminotransferase	0.106	0.562
Alanine aminotransferase	-0.005	0.980
Total cholesterol	-0.156	0.403
Acute reactants at diagnosis		
ESR	0.128	0.484
CRP	0.067	0.717

GPA, granulomatosis with polyangiitis; BVAS, Birmingham vasculitis activity score; FFS, five factor scores; INR, international normalised ratio; ESR, erythrocyte sedimentation rate; CRP, C-reactive protein.

Table 4. Univariate and Multivariate Linear Regression Analyses of BVAS for GPA in Patients with GPA (n=32)

Variables	Univariate analysis			Multivariate analysis		
	Regression coefficient (Crude B)	Correlation coefficient (R=β)	p value	Standardized β*	95% confidential interval	p value
Demographic data						
Age at diagnosis	-0.038	-0.174	0.340			
Follow-up duration	-0.012	-0.140	0.446			
FFSs at diagnosis*						
FFS (1996)	2.871	0.734	<0.001			
FFS (2009)	1.127	0.354	0.047			
RDW at diagnosis	0.367	0.461	0.008	0.393	0.041–0.584	0.025
Laboratory results at diagnosis						
White blood cell	0.000	0.153	0.404			
Haemoglobin	0.227	0.114	0.533			
Platelet	-0.003	-0.151	0.411			
Prothrombin time (INR) (n=59)	3.453	0.154	0.624			
Fasting glucose	0.025	0.302	0.093			
Blood urea nitrogen	0.038	0.258	0.154			
Creatinine	0.655	0.349	0.049	0.235	-0.199–1.078	0.170
Protein	-1.189	-0.310	0.084			
Serum albumin	-1.185	-0.288	0.110			
Alkaline phosphatase	0.006	0.240	0.186			
Aspartate aminotransferase	0.029	0.231	0.203			
Alanine aminotransferase	0.023	0.109	0.601			
Total cholesterol	-0.019	-0.309	0.091			
Acute reactants at diagnosis						
ESR	0.006	0.071	0.698			
CRP	0.014	0.327	0.067			

RDW, red blood cell distribution width; GPA, granulomatosis with polyangiitis; BVAS, Birmingham vasculitis activity score; FFS, five factor scores; INR, international normalised ratio; ESR, erythrocyte sedimentation rate; CRP, C-reactive protein.

*We did not include FFS (1996) and FFS (2009) in multivariate linear regression analysis due to overlapped items between BVAS and FFS.

The optimal cut-off of RDW to predict severe GPA at diagnosis

In this study, we defined severe GPA as BVAS for GPA ≥7. We divided GPA patients into severe and not severe GPA groups according to it. Eleven patients were in the severe GPA group and 21 patients were in the not severe GPA group. The mean RDW of severe GPA group was higher than that of not severe GPA group (16.8% and 13.8%, *p*=0.032). We calculated the optimal cut-off of RDW to predict severe GPA, and we discovered that 15.4% was a strong predictor of severe GPA (AUROC 0.732, 95% CI 0.527–0.936, *p*=0.034; sensitivity 54.5% and specificity 95.2%) (Supplementary Fig. 1A, only online). We also reclassified the 32 GPA patients into two groups according to the optimal cut-off of RDW. Severe GPA (BVAS for GPA ≥7) was identified more frequently in patients having RDW ≥15.4% than those having RDW <15.4% (85.7% vs. 20.0%, *p*=0.001) (Supplementary Fig. 1B, only online). Furthermore, patients with RDW ≥15.4% had a significant higher risk of severe GPA than those without (RR 24.0, 95% CI 2.329–247.368).

Predictors of prognosis during the follow-up duration

Since BVAS for GPA, FFS (1996), FFS (2009), and ENT symptoms were significantly related to RDW, we divided GPA patients into groups according to BVAS ≥7 or <7, FFS (1996) ≥1 or <1, FFS (2009) ≥1 or <1, RDW ≥15.4% or <15.4%, and the presence or absence of ENT manifestation based on our previous studies.¹⁶⁻¹⁸ We used univariate and multivariate Cox hazards models to analyse the potential for predicting the prognosis of GPA in disease processes. In terms of relapse of GPA, there was no statistically significant predictor among them. In terms of refractory disease of GPA, univariate analysis showed that BVAS ≥7, FFS (1996) ≥1 and FFS (2009) ≥1 at diagnosis were not predicted thereof. Meanwhile, patients having RDW ≥15.4% and having no ENT symptoms at diagnosis exhibited a significantly increased risk of refractory GPA than those having RDW <15.4% and ENT manifestation (RR 19.527, 95% CI 2.271–167.905, and RR 0.177, 95% CI 0.035–0.890, respectively). Multivariate Cox hazards analysis showed RDW ≥15.4% to be the only significant predictor of refractory GPA (RR 17.573, 95% CI 1.701–181.586). There were significant differences in

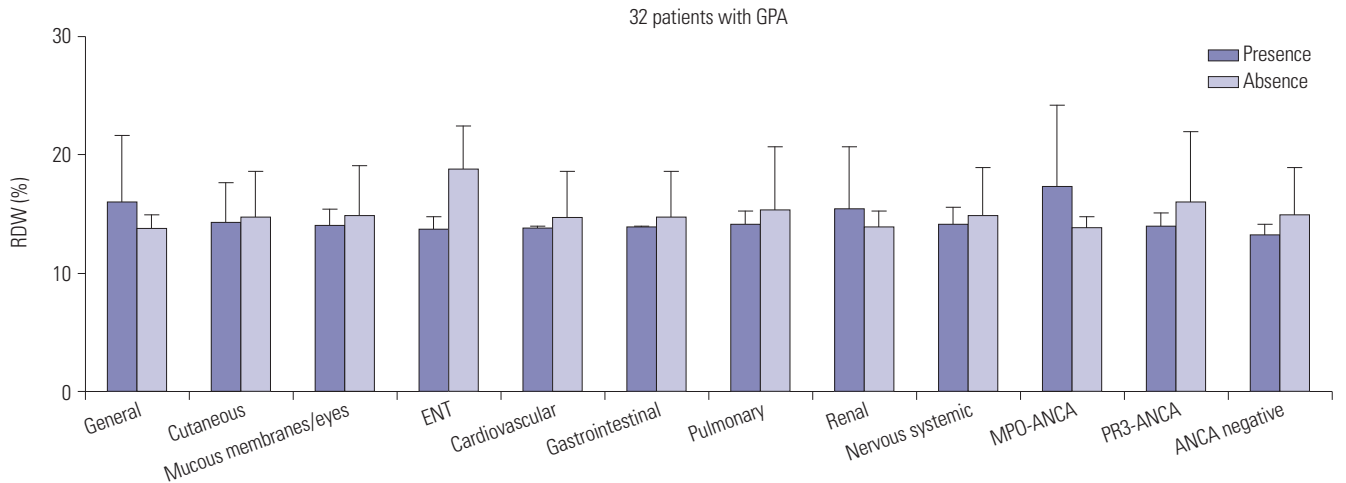


Fig. 1. Comparison of RDW between the presence and absence of clinical aspects and ANCA types in patients with GPA at diagnosis. In GPA patients, among organ-based clinical manifestations, only patients with ENT symptoms had the lower mean RDW than those without (13.9% vs. 19.0%, $p=0.001$). However, there was no significant difference in RDW between the presence and absence of PR3-ANCA. RDW, red blood cell distribution width; ANCA, antineutrophil cytoplasmic antibody; GPA, granulomatosis with polyangiitis; ENT, ear nose throat; MPO, myeloperoxidase; PR3, proteinase 3.

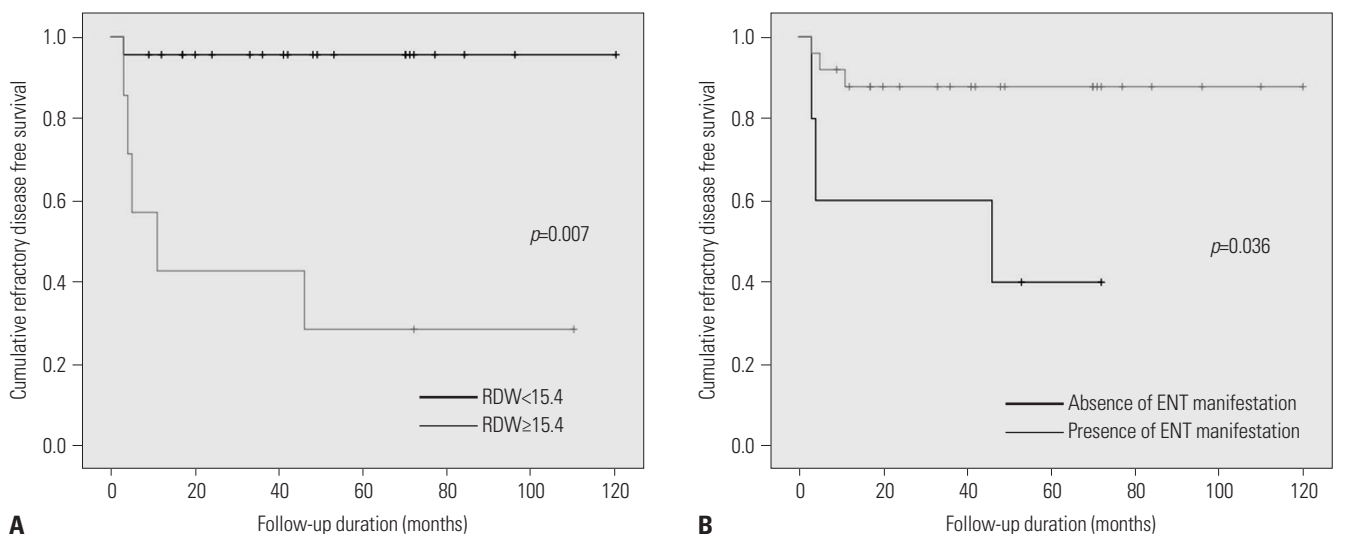


Fig. 2. Cumulative refractory disease free survival rates during the follow-up of GPA. (A, B) There were significant differences in cumulative refractory disease free survival rates according to $RDW \geq 15.4\%$ ($p=0.007$) and the absence of ENT manifestation ($p=0.036$). Patients with $RDW \geq 15.4\%$ and no ENT symptoms at diagnosis exhibited a significantly increased risk of refractory disease of GPA than those with $RDW < 15.4\%$ and ENT manifestation (RR 19.527, 95% CI 2.271–167.905, and RR 0.177, 95% CI 0.035–0.890, respectively). GPA, granulomatosis with polyangiitis; RDW, red blood cell distribution width; ENT, ear nose throat; RR, relative risk; CI, confidence interval.

cumulative refractory disease free survival rates according to $RDW \geq 15.4\%$ ($p=0.007$) and the absence of ENT manifestation ($p=0.036$) (Fig. 2).

DISCUSSION

In this study, we first demonstrated that RDW can predict vasculitis activity in patients with GPA. RDW was significantly correlated with BVAS for GPA in GPA patients, and furthermore, RDW was the only independent predictor of BVAS for

GPA among other variables in multivariate linear regression analysis. We also found that an increase in RDW was associated with the absence of ENT symptoms, but not PR3-ANCA. In addition, we discovered that 15.4% of RDW was a strong predictor of severe GPA. Moreover, we found that patients having $RDW \geq 15.4\%$ and having no ENT manifestation at diagnosis faced a significantly higher risk of refractory disease of GPA than those without these features during follow-up of at least more than 12 weeks. $RDW \geq 15.4\%$ was the only significant predictor of refractory GPA in multivariate analysis. Taken together, we concluded that RDW can predict vasculitis activity

of GPA and that RDW $\geq 15.4\%$ at diagnosis not only increases the risk of severe GPA, but also predicts refractory diseases during follow-up.

RDW is clinically used to differentiate between different types of anaemia, particularly iron deficiency anaemia and anaemia of chronic disease.¹¹ However, in this study, RDW was not significantly associated with haemoglobin. In order to reduce the effect of anaemia on the association of RDW with vasculitis activity of GPA, we excluded 5 patients with anaemia (haemoglobin < 12.0 g/dL) and reanalysed the potential of RDW to predict vasculitis activity in 27 patients with GPA. RDW was positively correlated with BVAS for GPA, FFS (1996) and FFS (2009) and negatively correlated with protein ($p < 0.05$ for all). However, RDW was not correlated with haemoglobin, ESR or CRP (Supplementary Table 1, only online). Univariate linear regression analysis showed BVAS for GPA to be significantly associated with RDW ($r = 0.470$, $p = 0.013$) and serum albumin ($r = -0.388$, $p = 0.045$). Multivariate linear regression analysis revealed that RDW was the only independent predictor of BVAS for GPA ($\beta = 0.449$, 95% CI 0.083–0.598, $p = 0.012$) (Supplementary Table 2, only online). The highest quartile of BVAS for GPA for severe GPA was a score of 7 or greater, and therewith, the optimal cut-off of RDW to predict severe GPA was 13.7% (AUROC 0.735, 95% CI 0.522–0.946, $p = 0.045$; sensitivity 80.0% and specificity 70.6%) (Supplementary Fig. 1C, only online). Patients with RDW $\geq 13.7\%$ also had a significant higher risk of severe GPA than those without (RR 9.6, 95% CI 1.283–62.162) (Supplementary Fig. 1D, only online). However, RDW $\geq 13.7\%$ could not predict refractory disease in GPA patients without anaemia. Taken together, we concluded that independent of concurrent anaemia, RDW can predict vasculitis activity of GPA at the same time, but not refractory disease during follow-up. Thus, in clinical settings, we suggest RDW $\geq 15.4\%$ as a predictor of severe GPA and refractory disease development during the follow-up duration in GPA patients without anaemia.

In general, pro-inflammatory cytokines may be involved in the development of anaemia in a variety of diseases.²³ In the early stage of GPA, large amounts of pro-inflammatory cytokines produced by macrophages and T cells, such as tumour necrosis factor- α and interleukin-6, stimulate and prime neutrophils, and primed neutrophils are subsequently activated by PR3-ANCA. Activated neutrophils migrate into adjacent tissues and predominantly induce inflammation primarily through innate immune responses. However, in the sclerotic progression stage of GPA, macrophages and autoreactive lymphocytes rather than activated neutrophils participate in the formation of pathergic necrosis and necrotising granulomatosis.²⁴ Therefore, the effect of the pathophysiology of GPA on the development of anaemia at the time of diagnosis of GPA might be theoretically reduced compared to the early stage of GPA. The lack of correlation between RDW and ESR or CRP in this study might support this assumption. Furthermore, this explain about the discrepancy between this study and previous stud-

ies with relatively urgent diseases with much inflammatory burden including acute myocardial infarction, sepsis, and cancer.^{25–27} We hypothesised that large amounts of pro-inflammatory cytokines may induce anaemia and increase RDW, along with ESR and CRP, in rapidly progressive inflammatory diseases, while small amounts of pro-inflammatory cytokines may induce subclinical anaemia and increase RDW, but not ESR or CRP in slowly progressive diseases like GPA. This hypothesis may be supported by our findings among which RDW was significantly associated with BVAS for GPA after excluding anaemic patients and RDW, instead of ESR and CRP, at diagnosis could predict refractory GPA during follow-up.

Since PR3-ANCA is known to play the most important role in the pathogenesis of GPA, it was thought that PR3-ANCA should be related to vasculitis activity of GPA. However, in this study, PR3-ANCA was not correlated with BVAS for GPA, and furthermore, it could not predict refractory disease during the follow-up duration. Although the significance of PR3-ANCA positivity in the rate of relapse or refractory disease of GPA has been debated, PR3-ANCA seems to be closely associated with poor prognosis in the disease course.^{28–30} However, our study could not clarify the contribution of PR3-ANCA to poor outcome of GPA. Ethnic differences may affect differences in factors that affect the poor prognosis of GPA.³¹

In addition to RDW, RDW to platelet ratio has been recently reported to be associated with severity in several conditions.^{32,33} We investigated the association between RDW to platelet ratio and vasculitis activity of GPA by univariable linear regression analysis. RDW to platelet ratio exhibited a tendency to be correlated with BVAS of GPA, but it was not statistically significant ($r = 0.325$, 95% CI -3.230–78.145, $p = 0.070$).

The strengths of our study are as follows: first, we first demonstrated that RDW is the only independent predictor of BVAS for GPA. Second, we first suggested the optimal cut-off of RDW to predict severe GPA (the highest quartile of BVAS for GPA) and demonstrated that the optimal cut-off of RDW at diagnosis reflects an increased risk of refractory disease in GPA patients during follow-up. Our study also had several limitations. First, the optimal cut-off of RDW to predict severe GPA was changed according to the presence of anaemia, which might reduce the clinical usefulness of RDW in clinical settings. Second, serial measurements of RDW and BVAS for GPA were not available. Third, this study has limitations as a retrospective study, with a small number of patients with GPA. If future studies can prospectively enrol a larger number of GPA patients and serially measure RDW and BVAS for GPA, they may reveal a dynamic correlation between RDW and vasculitis activity of GPA, and propose more reliable factors with which to predict the prognosis of GPA.

In conclusion, RDW may be an independent predictor of BVAS for GPA regardless of anaemia, and predict refractory disease of GPA during follow-up in patients without anaemia. Therefore, we suggest that general physicians can use RDW of

more than 15.4% as a predictor of high vascular activity and poor prognosis in patients with GPA.

ORCID

Ho Jae Kim <https://orcid.org/0000-0003-4471-8949>
Sang-Won Lee <https://orcid.org/0000-0002-8038-3341>

REFERENCES

- Jennette JC, Falk RJ, Bacon PA, Basu N, Cid MC, Ferrario F, et al. 2012 revised International Chapel Hill Consensus Conference Nomenclature of Vasculitides. *Arthritis Rheum* 2013;65:1-11.
- Bloch DA, Michel BA, Hunder GG, McShane DJ, Arend WP, Calabrese LH, et al. The American College of Rheumatology 1990 criteria for the classification of vasculitis. Patients and methods. *Arthritis Rheum* 1990;33:1068-73.
- Watts R, Lane S, Hanslik T, Hauser T, Hellmich B, Koldingsnes W, et al. Development and validation of a consensus methodology for the classification of the ANCA-associated vasculitides and polyarteritis nodosa for epidemiological studies. *Ann Rheum Dis* 2007;66:222-7.
- Leavitt RY, Fauci AS, Bloch DA, Michel BA, Hunder GG, Arend WP, et al. The American College of Rheumatology 1990 criteria for the classification of Wegener's granulomatosis. *Arthritis Rheum* 1990;33:1101-7.
- Masi AT, Hunder GG, Lie JT, Michel BA, Bloch DA, Arend WP, et al. The American College of Rheumatology 1990 criteria for the classification of Churg-Strauss syndrome (allergic granulomatosis and angiitis). *Arthritis Rheum* 1990;33:1094-100.
- Mukhtyar C, Lee R, Brown D, Carruthers D, Dasgupta B, Dubey S, et al. Modification and validation of the Birmingham Vasculitis Activity Score (version 3). *Ann Rheum Dis* 2009;68:1827-32.
- Stone JH, Hoffman GS, Merkel PA, Min YI, Uhlfelder ML, Hellmann DB, et al. A disease-specific activity index for Wegener's granulomatosis: modification of the Birmingham Vasculitis Activity Score. International Network for the Study of the Systemic Vasculitides (INSSYS). *Arthritis Rheum* 2001;44:912-20.
- de Groot K, Gross WL, Herlyn K, Reinhold-Keller E. Development and validation of a disease extent index for Wegener's granulomatosis. *Clin Nephrol* 2001;55:31-8.
- Gayraud M, Guillevin L, le Toumelin P, Cohen P, Lhote F, Casassus P, et al. Long-term followup of polyarteritis nodosa, microscopic polyangiitis, and Churg-Strauss syndrome: analysis of four prospective trials including 278 patients. *Arthritis Rheum* 2001;44:666-75.
- Guillevin L, Pagnoux C, Seror R, Mahr A, Mouthon L, Le Toumelin P; French Vasculitis Study Group (FVSG). The Five-Factor Score revisited: assessment of prognoses of systemic necrotizing vasculitides based on the French Vasculitis Study Group (FVSG) cohort. *Medicine (Baltimore)* 2011;90:19-27.
- Evans TC, Jhele D. The red blood cell distribution width. *J Emerg Med* 1991;9 Suppl 1:71-4.
- Luo R, Hu J, Jiang L, Zhang M. Prognostic value of red blood cell distribution width in non-cardiovascular critically or acutely patients: a systematic review. *PLoS One* 2016;11:e0167000.
- Rodríguez-Carrio J, Alperi-López M, López P, Alonso-Castro S, Ballina-García FJ, Suárez A. Red cell distribution width is associated with cardiovascular risk and disease parameters in rheumatoid arthritis. *Rheumatology (Oxford)* 2015;54:641-6.
- Tecer D, Sezgin M, Kanik A, İncel NA, Çimen ÖB, Biçer A, et al. Can mean platelet volume and red blood cell distribution width show disease activity in rheumatoid arthritis? *Biomark Med* 2016;10:967-74.
- Aksoy ŞN, Savaş E, Sucu M, Kısacık B, Kul S, Zengin O. Association between red blood cell distribution width and disease activity in patients with Behçet's disease. *J Int Med Res* 2015;43:765-73.
- Oh YJ, Ahn SS, Park ES, Jung SM, Song JJ, Park YB, et al. Chest and renal involvements, Birmingham vascular activity score more than 13.5 and five factor score (1996) more than 1 at diagnosis are significant predictors of relapse of microscopic polyangiitis. *Clin Exp Rheumatol* 2017;35 Suppl 103:47-54.
- Yoo J, Kim HJ, Jung SM, Song JJ, Park YB, Lee SW. Birmingham vasculitis activity score of more than 9.5 at diagnosis is an independent predictor of refractory disease in granulomatosis with polyangiitis. *Int J Rheum Dis* 2017;20:1593-605.
- Oh YJ, Ahn SS, Park ES, Jung SM, Song JJ, Park YB, et al. Birmingham vasculitis activity score at diagnosis is a significant predictor of relapse of polyarteritis nodosa. *Rheumatol Int* 2017;37:685-94.
- Yoo J, Kim HJ, Ahn SS, Jung SM, Song JJ, Park YB, et al. Clinical and prognostic features of Korean patients with MPO-ANCA, PR3-ANCA and ANCA-negative vasculitis. *Clin Exp Rheumatol* 2017;35 Suppl 103:111-18.
- Cornec D, Cornec-Le Gall E, Fervenza FC, Specks U. ANCA-associated vasculitis - clinical utility of using ANCA specificity to classify patients. *Nat Rev Rheumatol* 2016;12:570-9.
- Chen M, Kallenberg CG. ANCA-associated vasculitides--advances in pathogenesis and treatment. *Nat Rev Rheumatol* 2010;6:653-64.
- Mukhtyar C, Hellmich B, Jayne D, Flossmann O, Luqmani R. Remission in antineutrophil cytoplasmic antibody-associated systemic vasculitis. *Clin Exp Rheumatol* 2006;24(6 Suppl 43):S93-8.
- Nangaku M, Eckardt KU. Pathogenesis of renal anemia. *Semin Nephrol* 2006;26:261-8.
- Jennette JC, Falk RJ, Hu P, Xiao H. Pathogenesis of antineutrophil cytoplasmic autoantibody-associated small-vessel vasculitis. *Annu Rev Pathol* 2013;8:139-60.
- Dabbah S, Hammerman H, Markiewicz W, Aronson D. Relation between red cell distribution width and clinical outcomes after acute myocardial infarction. *Am J Cardiol* 2010;105:312-7.
- Lorente L, Martín MM, Abreu-González P, Solé-Violán J, Ferreres J, Labarta L, et al. Red blood cell distribution width during the first week is associated with severity and mortality in septic patients. *PLoS One* 2014;9:e105436.
- Koma Y, Onishi A, Matsuoka H, Oda N, Yokota N, Matsumoto Y, et al. Increased red blood cell distribution width associates with cancer stage and prognosis in patients with lung cancer. *PLoS One* 2013;8:e80240.
- Puéchal X, Pagnoux C, Perrodeau É, Hamidou M, Boffa JJ, Kyndt X, et al. Long-term outcomes among participants in the WEGENT trial of remission-maintenance therapy for granulomatosis with polyangiitis (Wegener's) or microscopic polyangiitis. *Arthritis Rheumatol* 2016;68:690-701.
- Kemna MJ, Schlumberger W, van Paassen P, Dähnrich C, Damoiseaux JG, Cohen Tervaert JW. The avidity of PR3-ANCA in patients with granulomatosis with polyangiitis during follow-up. *Clin Exp Immunol* 2016;185:141-7.
- Miloslavsky EM, Lu N, Unizony S, Choi HK, Merkel PA, Seo P, et al. Myeloperoxidase-antineutrophil cytoplasmic antibody (ANCA)-positive and ANCA-negative patients with granulomatosis with polyangiitis (Wegener's): distinct patient subsets. *Arthritis Rheumatol* 2016;68:2945-52.
- Furuta S, Chaudhry AN, Arimura Y, Dobashi H, Fujimoto S, Homma S, et al. Comparison of the phenotype and outcome of granulomatosis with polyangiitis between UK and Japanese cohorts. *J*

- Rheumatol 2017;44:216-22.
32. Lee HW, Kang W, Kim BK, Kim SU, Park JY, Kim DY, et al. Red cell volume distribution width-to-platelet ratio in assessment of liver fibrosis in patients with chronic hepatitis B. *Liver Int* 2016;36:24-30.
 33. Chen B, Ye B, Zhang J, Ying L, Chen Y. RDW to platelet ratio: a novel noninvasive index for predicting hepatic fibrosis and cirrhosis in chronic hepatitis B. *PLoS One* 2013;8:e68780.