



저작자표시-비영리-변경금지 2.0 대한민국

이용자는 아래의 조건을 따르는 경우에 한하여 자유롭게

- 이 저작물을 복제, 배포, 전송, 전시, 공연 및 방송할 수 있습니다.

다음과 같은 조건을 따라야 합니다:



저작자표시. 귀하는 원저작자를 표시하여야 합니다.



비영리. 귀하는 이 저작물을 영리 목적으로 이용할 수 없습니다.



변경금지. 귀하는 이 저작물을 개작, 변형 또는 가공할 수 없습니다.

- 귀하는, 이 저작물의 재이용이나 배포의 경우, 이 저작물에 적용된 이용허락조건을 명확하게 나타내어야 합니다.
- 저작권자로부터 별도의 허가를 받으면 이러한 조건들은 적용되지 않습니다.

저작권법에 따른 이용자의 권리는 위의 내용에 의하여 영향을 받지 않습니다.

이것은 [이용허락규약\(Legal Code\)](#)을 이해하기 쉽게 요약한 것입니다.

[Disclaimer](#)

Dynamic contrast-enhanced magnetic  
resonance imaging as a surrogate  
biomarker for bevacizumab in  
colorectal cancer liver metastasis:  
a single-arm, exploratory trial

Yeo-Eun Kim

Department of Medicine

The Graduate School, Yonsei University

Dynamic contrast-enhanced magnetic  
resonance imaging as a surrogate  
biomarker for bevacizumab in  
colorectal cancer liver metastasis:  
a single-arm, exploratory trial

Directed by Professor Mi-Suk Park

The Doctoral Dissertation  
submitted to the Department of Medicine,  
the Graduate School of Yonsei University  
in partial fulfillment of the requirements for the degree  
of Doctor of Philosophy

Yeo-Eun Kim

June 2016

This certifies that the Doctoral  
Dissertation of Yeo-Eun Kim is  
approved.

-----  
Thesis Supervisor : Mi-Suk Park

-----  
Thesis Committee Member#1 : Sang Joon Shin

-----  
Thesis Committee Member#2 : Joong Bae Ahn

-----  
Thesis Committee Member#3 : Dong il Choi

-----  
Thesis Committee Member#4 : Jaeseok Park

The Graduate School  
Yonsei University

June 2016

## ACKNOWLEDGEMENTS

I acknowledge my deep gratitude to Dr. Mi-Suk Park, who is training me in gastrointestinal division and is also my dissertation director, for supporting my efforts with total commitment and facilitating every step of the process. My appreciation for her guidance and encouragement is tremendous.

Also, I am indebted to Dr. Sang Joon Shin, Joong Bae Ahn, Dong il Choi, Jaeseok Park, for their help for pertinent advice to assure the superior quality of this paper.

## <TABLE OF CONTENTS>

ABSTRACT .....	1
I. INTRODUCTION .....	3
II. MATERIALS AND METHODS.....	5
1. Patient population.....	6
2. Study design.....	6
3. DCE-MRI study.....	8
4. Plasma sample collection and analysis.....	10
5. Statistical analysis.....	10
III. RESULTS.....	11
1. Patients characteristics and clinical outcomes .....	11
2. DCE-MRI parameters and plasma CAFs as pharmacodynamic biomarkers.....	13
3. DCE parameters and plasma CAFs as prognostic biomarkers.....	14
IV. DISCUSSION.....	18
V. CONCLUSION.....	22
REFERENCES.....	22
ABSTRACT(IN KOREAN) .....	26

## LIST OF FIGURES

Figure 1. Study design .....	7
Figure 2. Changes in the values of the DCE-MRI and plasma CAFs parameters from baseline, first follow-up after treatment with bevacizumab alone, and second follow-up after treatment with combined therapy.....	13
Figure 3. Kaplan-Meier estimates for progression-free survival time for patients with low and high baseline IAUC <sub>60</sub> values, and a K <sup>trans</sup> reduction at the first follow-up .....	15
Figure 4. A 39-year-old male patient had rectal cancer with one hepatic metastatic lesion.....	17

## LIST OF TABLES

Table 1. Adverse events in 28 patients after treatment.....	12
Table 2. Results of multivariate analyses of the predictors of progression-free survival.....	16

<ABSTRACT>

Dynamic contrast-enhanced magnetic resonance imaging as a surrogate biomarker for bevacizumab in colorectal cancer liver metastasis: a single-arm, exploratory trial

Yeo-Eun Kim

*Department of Medicine  
The Graduate School, Yonsei University*

(Directed by Professor Mi-Suk Park)

**Purpose:** The purpose of this study is to investigate Dynamic Contrast Enhanced-Magnetic Resonance Imaging (DCE-MRI) and plasma cytokines and angiogenic factors (CAFs) as pharmacodynamic and prognostic biomarkers of bevacizumab monotherapy in colorectal cancer with liver metastasis (CRCLM).

**Material and Methods:** From July 2011 to March 2012, 28 patients with histologically confirmed CRCLM received bevacizumab monotherapy followed by combined FOLFOX therapy. The mean age of the patients was 57 years (range, 30 to 77 years). DCE-MRI ( $K^{\text{trans}}$  and  $\text{IAUC}_{60}$ ) was performed at baseline, first follow-up (3 days after bevacizumab monotherapy), and second follow-up (3 days after combined therapy). CAF levels (VEGF, PIGF, and IL-8) were assessed on the same days. Progression-free survival (PFS) time distributions were summarized using the Kaplan-Meier method and compared using log-rank tests.

**Results:** The median PFS period was 11.2 months.  $K^{\text{trans}}$ ,  $\text{IAUC}_{60}$ , VEGF, and PIGF values on the first follow-up day were significantly different compared with baseline values. No differences were observed on the second follow-up day. A >40% decrease in  $K^{\text{trans}}$  from baseline to first follow-up was associated with a longer PFS (hazard ratio, 0.349; 95% CI, 0.133 to 0.912;  $P = .0318$ ). Changes in CAFs did not show correlation with PFS time.

**Conclusion:** DCE-MRI parameters and CAFs are pharmacodynamic



biomarkers of bevacizumab for CRCLM. In our study, change in  $K^{\text{trans}}$  at 3 days after bevacizumab monotherapy was a favorable prognostic factor, however, the value of CAFs as a prognostic biomarker was not found.

---

Key words: DCE-MRI, bevacizumab, colorectal neoplasms

Dynamic contrast-enhanced magnetic resonance imaging as a surrogate biomarker for bevacizumab in colorectal cancer liver metastasis: a single-arm, exploratory trial

Yeo-Eun Kim

*Department of Medicine  
The Graduate School, Yonsei University*

(Directed by Professor Mi-Suk Park)

## I. INTRODUCTION

The combination of bevacizumab with cytotoxic chemotherapy has been proved to have survival benefits in patients with metastatic colorectal cancer<sup>1-3</sup>. This combination has been approved by the US Food and Drug Administration (FDA, Washington, D.C., USA) as a first-line treatment<sup>2</sup>. Bevacizumab is an inhibitor of vascular endothelial growth factor (VEGF). It normalizes the abnormal vascular structures in tumor stroma, decreases the elevated interstitial pressure in tumors, and alleviates the hypoxic tumor microenvironment<sup>4</sup>. In addition to the direct antiangiogenic effects, these changes also increase chemotherapeutic efficacy. The standard protocol uses combination therapy with cytotoxic agents, but does not include bevacizumab monotherapy<sup>2</sup>. One major issue for the combination therapy is that clinicians cannot distinguish the effects of bevacizumab alone from the effects of the cytotoxic agents used in the protocol. Despite the benefit of bevacizumab on clinical outcome, a substantial number of patients do not respond to the therapy targeting VEGF, or they develop resistance to the drug over time. There is also an increased chance of serious side effects (e.g., stroke, gastrointestinal perforation) in patients treated with VEGF-targeted therapy<sup>2,5</sup>. In addition, the target agents are expensive. There is a critical need for identification of reliable biomarkers for prediction of tumor response to treatment and to predict which patients are likely to benefit

from bevacizumab.

Plasma cytokines and angiogenic factors (CAFs) are potential biomarkers that reflect the systemic condition of patients with colorectal cancer treated with bevacizumab combined with cytotoxic chemotherapy<sup>6</sup>. Elevated baseline interleukin-8 is associated with a shorter progression-free survival (PFS) time. Levels of some plasma CAFs associated with angiogenesis and myeloid recruitment increase compared to baseline, before radiographic progression<sup>7</sup>. Plasma CAFs could be potential biomarkers of response and resistance to bevacizumab, but they cannot reflect the local response of the tumor microenvironment and cannot differentiate the response of the tumor from that of the host tissue<sup>7</sup>.

Unlike plasma CAFs used as systemic biomarkers, an imaging biomarker can reflect local tumor condition. However, tumor size may not be a reliable marker for assessment of the early effects of antiangiogenic agents because many of these new drugs act directly on endothelial cells, not on the tumor cells. Therefore, the effects of the agents are expected to be primarily cytostatic rather than cytotoxic<sup>8</sup>. As an alternative functional modality, dynamic contrast-enhanced magnetic resonance imaging (DCE-MRI) is a noninvasive and appropriate method for evaluating the efficacy of these antiangiogenic therapies using changes in tumor vascular perfusion, vascular permeability, and interstitial and intravascular volumes, without exposure to ionizing radiation<sup>8</sup>. The volume transfer constant ( $K^{\text{trans}}$ ) and the initial area under the gadolinium concentration-time curve (IAUC) have been proposed as useful parameters that reflect the vascular response<sup>8</sup>. These parameters can be used with DCE-MRI to quantify the effects of antiangiogenic therapy during the early response period.

Several studies have reported reduction in  $K^{\text{trans}}$  within a few days of bevacizumab treatment<sup>8,9</sup>. Some studies of bevacizumab in colorectal cancer suggest that DCE-MRI may be related to clinical outcome<sup>10,11</sup>. In addition, several studies of anti-VEGF tyrosine kinase inhibitors have shown that

reduction in  $K^{\text{trans}}$  and/or IAUC may distinguish responders from non-responders<sup>12-14</sup>. Based on those studies, patients with a smaller change in  $K^{\text{trans}}$  are predicted to have a shorter PFS time and to receive less clinical benefit from the treatment. However, when applying the results in the clinical practice setting, the clinician must determine whether the patients should stop receiving only bevacizumab, only the cytotoxic agent, or both bevacizumab and the cytotoxic agent. This is because the clinician cannot determine whether the change in  $K^{\text{trans}}$  results from the effect of the bevacizumab alone, the cytotoxic agent, or both.

To gain insight into the mechanisms of action and the pure effects of bevacizumab, we designed an exploratory trial with a single-arm of bevacizumab monotherapy followed by combined therapy. The effects of bevacizumab alone on both tumor physiology and systemic response were evaluated by measuring DCE-MRI parameters and plasma CAF levels. The primary objective of this phase II clinical trial was to determine prognostic biomarkers of bevacizumab alone that might show correlation with clinical outcomes. Our study also revealed the antiangiogenic effect of bevacizumab monotherapy on local tumor response using changes in DCE-MRI, and on systemic response using changes in plasma CAFs.

## II. MATERIALS AND METHODS

This study was registered at <http://www.clinicaltrials.gov> (NCT01318239). The study was conducted in accordance with the Declaration of Helsinki and Good Clinical Practice Guidelines. Protocol approval was obtained from the institutional review board of Severance Hospital, Yonsei University College of Medicine (Seoul, Republic of Korea). Written informed consent was obtained from each patient.

## 1. Patient population

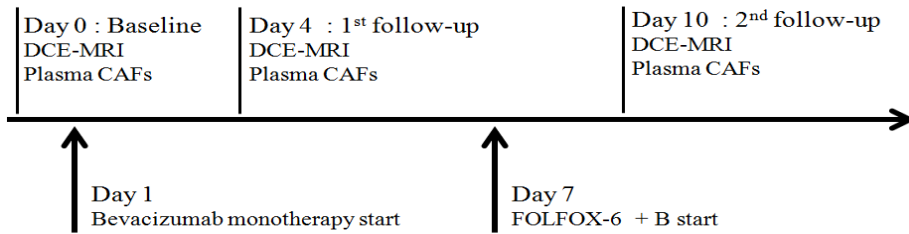
Patients aged  $\geq 20$  years with histologically confirmed colorectal cancer and one or more measurable hepatic metastases  $\geq 2$ cm diameter were enrolled in the study.

Patients with standard contraindications for MR imaging and/or gadolinium-based contrast agents, pregnant or breast-feeding women, and patients with decreased renal function ( $Cr > 1.5$  mg/dl,  $BUN > 30$ mg/dl), who had prior chemotherapy, concurrent malignancies or significant medical comorbidities, and who had received any treatment as part of a clinical trial were excluded from the study.

## 2. Study design

In this single group, exploratory trial, patients were treated with bevacizumab (5 mg/kg IV) alone on day 1, followed by a concurrent FOLFOX-6 + B regimen (bevacizumab/oxaliplatin/5-fluorouracil/leucovorin) on day 7. Reduction in dose of the cytotoxic chemotherapy was required for grade 3 or 4 toxicities that were adverse events of however, the dose of bevacizumab, was not reduced. Adverse events were graded using the National Cancer Institute Common Terminology Criteria for Adverse Events (CTCAE), version 3.0. Treatment was continued until documentation of unacceptable toxicities, disease progression, or withdrawal of consent.

DCE-MRI and blood sampling for plasma CAFs were performed on the day before treatment was initiated (baseline), on day 3 after the patients received bevacizumab monotherapy (first follow-up), and on day 3 after receiving the combined chemotherapy (second follow-up) (Fig.1).



**Figure 1.** Study design.

The primary endpoint was the correlation between the changes in DCE-MRI parameters (from baseline to 3 days after administration of bevacizumab monotherapy) with progression-free survival (PFS) time. The standard DCE-MRI parameters ( $K^{\text{trans}}$  and  $\text{IAUC}_{60}$ ) were measured each imaging and the changes from baseline to first follow-up and from first follow-up to second follow-up were calculated. The baseline values were dichotomized according to the low and high group based on the median value. The changes in the DCE-MRI parameters were dichotomized according to larger and smaller change groups, using a 40% change as the cut-off value. This cut-off value of 40% was chosen because a 40% reduction in  $K^{\text{trans}}$  is necessary before a favorable clinical response can be detected<sup>11-13,15,16</sup>. Dichotomized values of the baseline and the changes were correlated with PFS. The changes in tumor size were also measured at baseline, first follow-up, and second follow-up.

The secondary endpoints included the correlation between changes in plasma CAFs from baseline to 3 days after bevacizumab monotherapy, with PFS and toxicity. For correlation with clinical outcomes, plasma CAF values were dichotomized by calculating optimal cut-off values, obtained from receiver operating characteristic (ROC) curve analysis.

PFS was defined as the period from the enrollment date until the documented tumor progression date. Data were censored for the patients who were alive without disease progression at the last follow-up date. Computed tomography (CT) examination with contrast enhancement was performed before and every 3

months after treatment. Tumor response evaluated at 3 months after the treatment was dichotomized according to a partial response group and a stable disease or disease progression group. Assessment of tumor response was performed in accordance with the Response Evaluation Criteria in Solid Tumors (RECIST) 1.1 guidelines<sup>17</sup>.

### 3. DCE-MRI study

For reproducibility, consistent DCE-MRI methods were followed using a 3-T MR scanner (MAGNETOM Tim Trio; Siemens Healthcare, Erlangen, Germany) equipped with 8-channel body phased-array coils (Siemens Healthcare). Each patient fasted for at least 4 hours before the scan was performed.

T1 mapping was obtained before acquisition of perfusion images to convert signal intensities of perfusion images into gadolinium concentration values. T1 maps were calculated from two flip angle scans using 2° and 14°

$$S(\alpha, T1, TR) = S_0 \frac{\sin \alpha (1 - \exp(-TR/T1))}{1 - \cos(\alpha) \exp(-TR/T1)} \quad T_1(t) = T_{10} + r_1 * c(t)$$

where  $T_1(t)$ : T1 dynamic;  $T_{10}$ : T1 before contrast;  $r_1$ : T1 relaxivity of the contrast agent; and  $c(t)$ : contrast agent concentration.

Axial images for the T1 maps were obtained using three-dimensional (3D) spoiled gradient echo sequences with two different flip angles (2° and 14°) and a fixed repetition time/echo time (TR/TE; 4.91 ms/1.71 ms). A total of 20 slices per sequence using a different flip angle were acquired. The slice thickness was 3.6 mm and the in-plane resolution was  $1.67 \times 1.67$  mm<sup>2</sup> for each in one breath-hold and scan time of 18s.

Perfusion images were obtained using 3D T1-weighted time resolved angiography with stochastic trajectories (TWIST) sequence (TR/TE, 4.51 ms/1.76 ms; slice thickness, 3.6 mm; flip angle, 12°; matrix size, 192 × 138; field of view, 300 mm; band width, 250 Hz/Px). Serial images (temporal

resolution, 0.295 s) were acquired during shallow, free-breathing respiration. Twenty axial image slices (range, 10 cm) per cycle were obtained while centered on the center of the tumor (5.9 s for one cycle). Perfusion images were acquired repetitively over 75 cycles for 7 – 8 minutes. A total volume of 15 ml Omniscan (gadodiamide; GE Healthcare, Oslo, Norway) was used as a contrast material, and was injected intravenously using an automatic injector at a rate of 5 ml sec<sup>-1</sup>, followed by a 30-ml saline injection. An algorithm with a diffeomorphism flow was introduced for registration between the T1 mapping sequence and the perfusion imaging sequence. The algorithm was based on maximization of statistical similarity criteria (local and global) in a variational framework. This flow was adjusted using a template propagation method by composition of small displacements. Regularization was achieved using fast filtering techniques. This approach combined the robustness of statistical similarity measures with the flexibility of diffeomorphic matching techniques<sup>18</sup>.

A commercial post-processing software based on a modified Tofts model (Tissue 4D, Siemens Medical Solutions) and installed at an image processing workstation (Leonardo, Siemens Medical Solutions), was used for calculation of the quantitative perfusion parameters. Motion correction was performed using the non-rigid body algorithm on the post-processing software. For analysis of the perfusion data, the arterial input function (AIF) was set as the average bi-exponential function using fast mode. Color-coded maps of the  $K^{\text{trans}}$  values were acquired through data processing.  $\text{IAUC}_{60}$  values for the first 60 s from the contrast injection were also acquired. Two dimensional regions of interest (ROIs) were hand-drawn on post-processed images by an abdominal radiologist with 7 years experiences, according to the tumor margin through the midline of the z-axis of the tumor in the section where the largest transverse diameter of liver metastasis was detected. ROIs were drawn for all tumors > 2cm in diameter and a mean value for  $K^{\text{trans}}$  was estimated for all patients with multiple lesions. Unlike RECIST, the commonly used criterion for measurable lesions on DCE



MRI is  $> 2\text{cm}$  in diameter, in consideration both of size reduction and measurement error<sup>10</sup>.

The baseline  $K^{\text{trans}}$  and  $\text{IAUC}_{60}$  values were acquired from the baseline study results. The values for these same parameters were assessed from the first follow-up and second follow-up images. The changes were calculated as absolute and percentage values.

#### **4. Plasma sample collection and analysis**

Blood samples were collected for circulating pharmacodynamics marker studies prior to the initial bevacizumab infusion, on the third day after bevacizumab monotherapy, and on the third day after combined therapy. Serum samples were assayed for circulating VEGF-A, placental growth factor (PlGF), soluble vascular endothelial growth factor receptor 2, and interleukin-8 (IL-8) using enzyme-linked immunosorbent assay kits (R&D Systems, Minneapolis, MN, USA). The changes were calculated as absolute and percentage values.

#### **5. Statistical analysis**

DCE-MRI parameter and plasma CAF values were correlated with PFS. Baseline values and the changes in the DCE-MRI parameters and CAF values were analyzed to determine correlations among the parameters.

Kaplan-Meier estimates and log-rank tests were computed to evaluate the associations between changes in DCE-MRI parameter or plasma CAF values with the length of PFS or OS. Analyses of associations between baseline values of DCE-MRI parameters or plasma CAFs with PFS or OS were also performed.

The PFS and overall survival times were estimated using the Kaplan-Meier method. The differences among the patient groups for PFS, OS, and treatment response were compared using multivariate cox regression analysis. Six parameters were considered as possible covariates in the regression analysis. The associations among the categorical variables and the continuous variables

were analyzed using chi-square tests and linear mixed models, respectively.

For all analyses, a P-value < 5% was considered statistically significant. SPSS statistical software (version 18.0, SPSS, Inc., Chicago, IL) and SAS statistical software (version 9.2, SAS Institute, Inc., Cary, NC) were used for all analyses.

### III. RESULTS

#### 1. Patients characteristics and clinical outcomes

Thirty-two patients were enrolled in the study between July 2011 and March 2012. Four patients were excluded from the analysis due to follow-up loss (n=3) or imaging error (n=1). The mean age of the patients was 57 years (range, 30 to 77 years), and a total of 60 hepatic metastatic lesions in patients with rectal cancer (n=8) and colon cancer (n=20) were analyzed. The Eastern Cooperative Oncology Group (ECOG) Performance status score was 0 for 22 patients and 1 for 6 patients. The mean baseline CEA value was 340.78 ng/ml.

The median PFS time was 11.2 (95% confidence interval (CI): 6.9 to 15.5) months, and the median overall survival time was 22.7 (95% CI: 18.8 to 26.7) months.

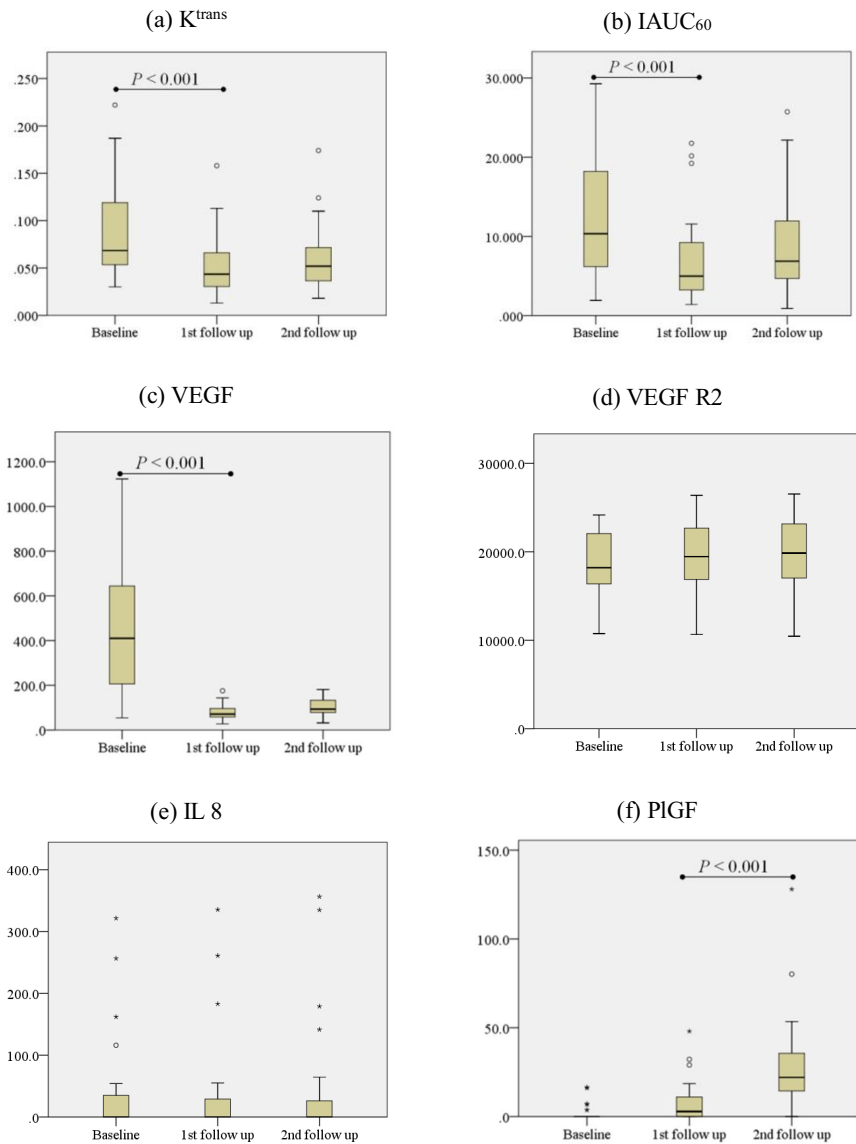
In assessment of tumor response on 3-month follow-up CT images according to RECIST 1.1, 13 patients showed partial response and 14 patients showed stable disease. Only one patient showed disease progression on the 3-month follow-up. Dose reduction was required for 5 of 28 patients due to toxicity during the course of the scheduled treatment. Fatigue and neuropathy were the most common adverse events. Neutropenia was the most frequent of the grade 3 or 4 adverse events (Table 1).

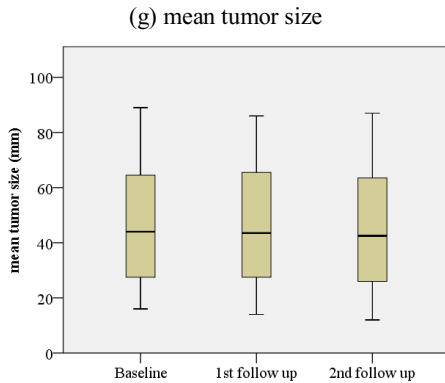
**Table 1.** Adverse events in 28 patients after treatment

Event	No. of patients	
	Grade 3 or 4	All grades
Neutropenia	8	10
Nausea	4	13
Vomiting	1	2
Ileus	3	4
Neuropathy	2	17
Infection	1	1
Hyponatremia	1	1
Intestinal obstruction	2	2
Fever	3	6
Perianal infection	1	1
Abdominal infection	1	1
Operation site wound infection	1	1
AST elevation	1	1
Lumbar pain		1
Thrombus	1	1
Mental change	3	3
Proteinuria	1	2
Fatigue		22
Weight loss		4
Weight gain		2
Cough		3
Hypersensitivity		4
Anorexia		15
Diarrhea		6
Constipation		4
Hematochezia		1
Rash		3
Mucositis		8
Alopecia		1
Epistaxis		7
Anemia		1
Thrombocytopenia		7
<b>Total</b>	<b>34</b>	<b>155</b>

## 2. DCE-MRI parameters and plasma CAFs as pharmacodynamic biomarkers

The results for the changes in DCE-MRI parameters, plasma CAF values, and tumor size at 3 days after bevacizumab monotherapy (first follow-up) and at 3 days after combined chemotherapy (second follow-up) are shown in Figure 2.





**Figure 2.** Changes in the values of the DCE-MRI and plasma CAFs parameters from baseline, first follow-up after treatment with bevacizumab alone, and second follow-up after treatment with combined therapy.

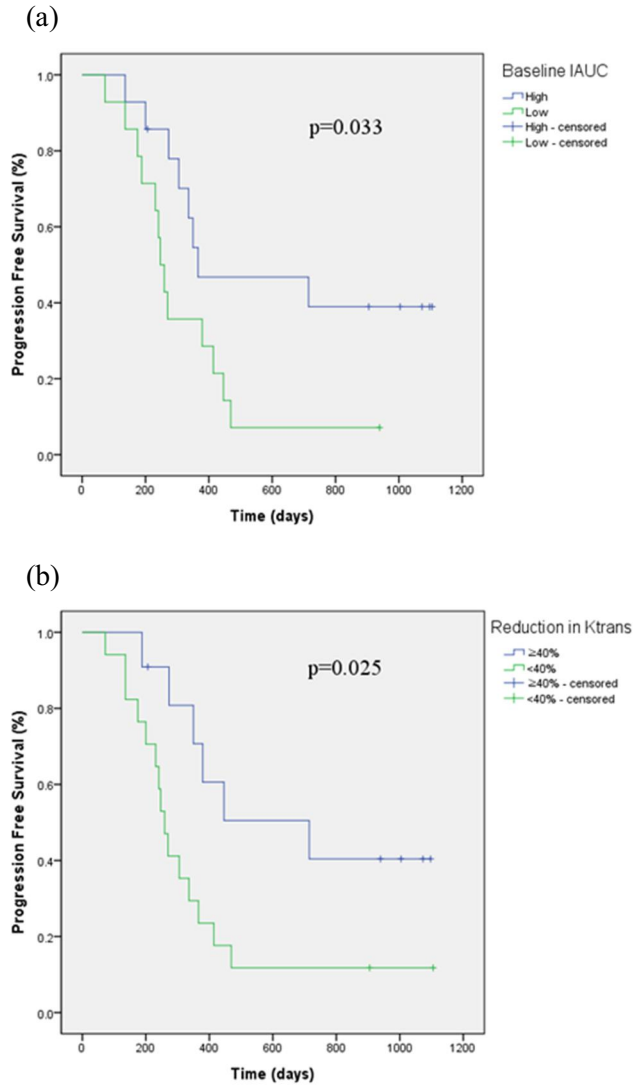
Compared with the baseline values, the  $K^{\text{trans}}$ ,  $\text{IAUC}_{60}$ , and serum VEGF values at the first follow-up evaluation had decreased ( $p < 0.05$ ). No significant changes were detected at the second follow-up evaluation compared to the first follow-up. Serum PIGF was elevated at the first follow-up evaluation and was still elevated at the second follow-up evaluation. There were no significant changes in sVEGFR2, IL-8, and size and no significant correlations were observed between the changes in DCE-MRI parameters and plasma CAF values.

The mean tumor size measured at baseline, first follow-up, and second follow-up was  $47.0 \pm 22.0$  mm,  $47.0 \pm 21.3$  mm, and  $47.0 \pm 22.1$  mm, respectively.

### 3. DCE-MRI parameters and plasma CAFs as prognostic biomarkers

The results using Kaplan-Meier analysis indicated that PFS time showed correlation with the dichotomized  $K^{\text{trans}}$  (i.e., with the cut-off set at 40% reduction) variable. A  $\geq 40\%$  reduction in  $K^{\text{trans}}$  from baseline to 3 days after bevacizumab monotherapy showed significant association with a longer PFS

time ( $p=0.025$ ). OS time did not show significant association with the reduction in  $K^{\text{trans}}$ . The changes in the other parameters, including  $\text{IAUC}_{60}$  and plasma CAFs, did not show significant correlation with PFS time (Fig. 3).



**Figure 3.** Kaplan-Meier estimates for progression-free survival time for patients with low and high baseline  $\text{IAUC}_{60}$  (a) values, and a  $K^{\text{trans}}$  reduction at the 1st follow-up (b).

When dichotomized at the median values for the baseline DCE-MRI parameters, a high baseline IAUC<sub>60</sub> (cut-off value: 10.337) showed significant association with a longer PFS time (p=0.033), but not with a longer OS time (Fig. 3). In analysis of the relationships between plasma CAFs and clinical outcomes, there were no associations between baseline serum markers and PFS or OS times.

In multivariate analyses using the Cox regression method, a greater reduction in K<sup>trans</sup> and a high baseline IAUC<sub>60</sub> were independent predictors for PFS time. Patients with a  $\geq 40\%$  reduction in K<sup>trans</sup> from baseline to 3 days after bevacizumab monotherapy had a 0.349 times lower hazard of disease progression (Table 2).

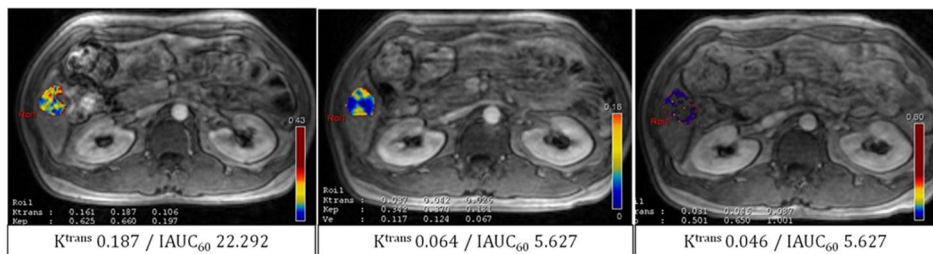
**Table 2.** Results of multivariate analyses of the predictors of progression-free survival

variable	HR(95% CI)	p-value
K <sup>trans</sup> baseline	0.716(0.301,1.705)	0.4511
K <sup>trans</sup> 1 <sup>st</sup> follow-up baseline	0.349(0.133,0.912)	0.0318
IAUC <sub>60</sub> baseline	0.39(0.159,0.957)	0.0398
IAUC <sub>60</sub> 1 <sup>st</sup> follow-up baseline	1.014(0.425,2.42)	0.9747
VEGF baseline	1.217(0.508,2.915)	0.66
VEGF 1 <sup>st</sup> follow-up baseline	1.68(0.224,12.589)	0.6137
VEGF R2baseline	0.523(0.216,1.268)	0.1514
VEGF R2 1 <sup>st</sup> follow-up baseline	4.328(0.912,20.532)	0.0651
IL8 baseline		
IL 8 1 <sup>st</sup> follow-up baseline	0.613(0.205,1.833)	0.3812
PIGF baseline		
PIGF 1 <sup>st</sup> follow-up baseline	1.034(0.303,3.53)	0.9574

The combined effects of changes in K<sup>trans</sup> and baseline IAUC<sub>60</sub> were also analyzed. The results using the Kaplan-Meier method indicated that the patients

with both a greater change in  $K^{trans}$  and a higher baseline  $IAUC_{60}$  experienced the longest median PFS time (23.8 months,  $n=7$ ); the patients with both the smaller change in  $K^{trans}$  and the lower baseline  $IAUC_{60}$  values had the shortest median PFS times (8.1 months,  $n=10$ ;  $p=0.019$ ). In multivariate analysis, compared with the patients with the greater change in  $K^{trans}$  and higher baseline  $IAUC_{60}$  values, the patients with the smaller change in  $K^{trans}$  and the lower baseline  $IAUC_{60}$  values had a six times greater odds of disease progression (HR [95% CI]; 6.061 [1.591, 23.09],  $p=0.0083$ ). The differences in OS times were not significantly different (HR [95% CI]; 2.497 [0.643, 9.698],  $p=0.1863$ ).

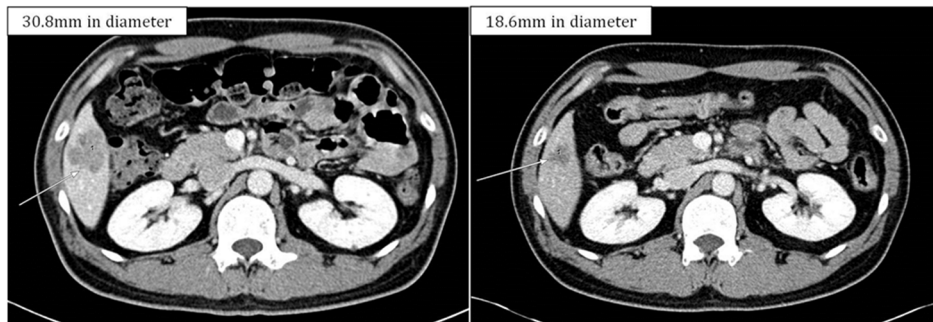
In multivariate analysis for treatment response at a 3-month follow-up CT, a  $\geq 40\%$  reduction in  $K^{trans}$  from the baseline to 3 days after bevacizumab monotherapy ( $p=0.0127$ ) and a higher baseline  $IAUC_{60}$  ( $p=0.0333$ ) were statistically significant independent predictors for a better response to the therapy (Fig. 4).



(a)

(b)

(c)



(d)

(e)



**Figure 4.** A 39-year-old male patient had rectal cancer with one hepatic metastatic lesion. On the baseline image (a) the IAUC<sub>60</sub> value was 22.29, which was a higher baseline group value. The baseline K<sup>trans</sup> value was 0.187. On the first follow-up image after bevacizumab monotherapy, the patient had a 66% reduction in K<sup>trans</sup>. The DCE-MRI results indicated that there were no significant changes in the perfusion parameters between the first and second follow-up (c). Based on the large reduction in K<sup>trans</sup>, and the high baseline IAUC<sub>60</sub> level, this patient was expected to have a good response to the treatment and to have a good prognosis. Compared with the baseline CT image (d), the metastatic lesion had decreased in size by the 3-month CT follow-up (e).

No significant correlation was observed between change in K<sup>trans</sup> with PFS (Pearson correlation coefficient (r) = - 0.298, p = 0.124) and baseline IAUC<sub>60</sub> with PFS (Pearson correlation coefficient (r) = - 0.270, p = 0.165).

#### IV. DISCUSSION

The overall survival time of 22.7 months and the progression-free survival time of 11.2 months obtained in our study compared favorably with the overall survival time of 21.3 months and the progression-free survival time of 10.4 months obtained in a previous randomized controlled phase III trial using concurrent FOLFOX-6 + B regimen<sup>1</sup>. Although our study was limited by the exploratory single-arm trial study design, this result suggested that bevacizumab monotherapy followed by concurrent FOLFOX-6 + B regimen is comparable to a concurrent FOLFOX-6 + B regimen for treatment of colorectal cancer liver metastasis (CRCLM).

The results from this exploratory trial suggested that the patients with  $\geq 40\%$  reduction in K<sup>trans</sup> by 3 days after bevacizumab monotherapy had a significantly

longer PFS time, suggesting that they received a clinical benefit from bevacizumab that those with a  $< 40\%$  change in  $K^{\text{trans}}$  did not receive. The results might imply that the prognosis for combined chemotherapy using bevacizumab can be predicted by the microvascular changes induced by bevacizumab alone. The change was detected as early as 3 days after bevacizumab monotherapy, which is much earlier than the size reductions induced by the combined therapy. Therefore, the decision to continue with bevacizumab, or not, can be made as early as 3 days after administration of bevacizumab monotherapy, with minimal cost or side effects. This result was consistent with the results of previous studies reporting that  $K^{\text{trans}}$  can be used as a prognostic biomarker that reflects microvascular change after antiangiogenic therapy, even when the target tumors, the drugs used, or the day that DCE-MRI results are obtained (usually 14 days after treatment) are different<sup>9,11,12,19-21</sup>. Our study results support the hypothesis that DCE-MRI can be used as a prognostic biomarker for the bevacizumab therapy used for CRCLM treatment.

Based on the results of our study, also indicated that baseline  $\text{IAUC}_{60}$  values can be used as a prognostic biomarker for the outcome of therapy using bevacizumab. This study found that patients with a higher than median value baseline  $\text{IAUC}_{60}$  had a significantly longer PFS time, suggest that they could receive clinical benefit from combined therapy using bevacizumab.

The power as a prognostic biomarker is greater when considering the change in  $K^{\text{trans}}$  combined with the baseline  $\text{IAUC}_{60}$  value, compared with the values considered separately. A patient with a  $\geq 40\%$  change in  $K^{\text{trans}}$  by 3 days after bevacizumab therapy and a relatively high baseline  $\text{IAUC}_{60}$ , should benefit from combined therapy with bevacizumab.

This study found that all of the DCE-MRI parameters ( $K^{\text{trans}}$  and  $\text{IAUC}_{60}$ ) decreased significantly by 3 days after bevacizumab monotherapy, but not after combined chemotherapy (maintaining the lower level as similar to that at 3 days after bevacizumab monotherapy).

These results reflected the fact that perfusion changes in the patients with CRCLM were induced by bevacizumab alone, but not by combined chemotherapy. When used for the treatment of human rectal cancer, the direct effects of bevacizumab on tumor physiology include decreases in tumor blood perfusion, blood volume, interstitial fluid pressure, and microvessel density<sup>22,23</sup>. These effects are induced by a direct antipermeability effect, vasoconstriction, a direct antiangiogenic effect inhibiting the formation of immature vessels, and/or apoptosis of proliferating endothelial cells<sup>8</sup>. Since the development of antiangiogenic therapy, perfusion imaging has been extensively investigated as a method for use in validation of the biologic efficacy of the molecular target agents on tumor tissue. DCE-MRI, one of the imaging modalities for perfusion imaging, is advantageous for the quantitative measurement of tumor microcirculation in vivo. This approach is noninvasive, repeatable, without radiation hazards, and includes anatomic details of the tumor. Because angiogenesis is a direct or indirect target of many new anticancer drugs, DCE-MRI is an appealing biomarker candidate for assessment of tumor angiogenic activity and for monitoring the effects of antiangiogenic agents<sup>8</sup>. Our study results indicated that DCE-MRI can be used as a pharmacodynamic biomarker of bevacizumab therapy of CRCLM.

We also assessed the effects of bevacizumab on plasma cytokines and angiogenic factors (IL-8, VEGF-A, VEGFR2, PlGF) to examine the systemic response. VEGF (also referred to as VEGF-A) has a crucial role in physiological and pathological angiogenesis, and VEGF-targeted agents have been validated as providing clinical benefits in the treatment of malignant disease<sup>22,24</sup>. To better understand the systemic effect of bevacizumab, which is a VEGF-targeted agent, more information about the biology of the VEGF ligand/receptor system is needed<sup>24</sup>. The mammalian VEGF family of ligands consists of five glycoproteins (i.e., VEGF-A (commonly referred to as VEGF), VEGF-B, VEGF-C, VEGF-D, and placenta growth factor (PlGF)). The VEGF

ligands bind to and activate three different type III receptor tyrosine kinases (known as VEGFR-1, VEGFR-2, and VEGFR-3), which have similar structures. Each ligand of the VEGF family has a distinctive binding specificity for one of the three receptors, therefore a diversity of functions can be mediated. VEGFR-2 is the key mediator of VEGF-induced angiogenesis<sup>24</sup>. Our results showed a significant decrease in circulating VEGF-A by 3 days after bevacizumab monotherapy, but not after combined chemotherapy. Most of the circulating VEGF-A was likely bound to bevacizumab as early as 3 days after bevacizumab monotherapy. This result was consistent with our predictions and with other data from blood marker studies of bevacizumab used for the treatment of colorectal cancer and other cancers<sup>7,25</sup>.

An increase in plasma PIGF levels was observed by 3 days after bevacizumab monotherapy and a more significant increase by 3 days after combined chemotherapy. Inhibition of VEGF signaling leads to a presumed compensatory increase in expression of other angiogenic factors, resulting in resistance to VEGF-targeted therapy; PIGF levels increase in plasma following blockade of VEGF signaling<sup>24</sup>. The delayed response of PIGF in our study can be explained by the consequential effect of the blockade of VEGF-A with bevacizumab.

Kopetz et al. reported that an elevated IL-8 level at baseline is associated with a shorter PFS time, but our study found no associations between baseline IL-8 values and PFS time. This result could be due to the different time points used for plasma sampling, which were 3 days after treatment in our study and before progression in their study (the median PFS time was 12.8 months). Circulating cytokine levels may reflect the responses of non-neoplastic host tissue and of neoplastic tumor tissue, to treatment<sup>7</sup>. The associations between plasma angiogenic factors and clinical outcomes remain unclear, probably due to the complexities of tumor angiogenesis, angiogenic factors, and resistance mechanisms to the anti-angiogenic therapy<sup>6,7,24</sup>.

This study had the limitation of small sample size. Therefore, the results of our

study, usefulness of  $K^{\text{trans}}$  change as a prognostic biomarker, cannot be directly applied to the daily practice. Further study with a larger sample size is needed.

## V. CONCLUSION

In conclusion, DCE-MRI parameters and CAFs are pharmacodynamic biomarkers of bevacizumab for CRCLM. In our study, change in  $K^{\text{trans}}$  at 3 days after bevacizumab monotherapy was a favorable prognostic factor, but, the value of CAFs as a prognostic biomarker was not found

## REFERENCES

1. Saltz LB, Clarke S, Diaz-Rubio E, Scheithauer W, Figer A, Wong R, et al. Bevacizumab in combination with oxaliplatin-based chemotherapy as first-line therapy in metastatic colorectal cancer: a randomized phase III study. *J Clin Oncol.* 2008;26:2013-9.
2. Meyerhardt JA, Li L, Sanoff HK, Carpenter Wt, Schrag D. Effectiveness of bevacizumab with first-line combination chemotherapy for Medicare patients with stage IV colorectal cancer. *J Clin Oncol.* 2012;30:608-15.
3. Ducreux M, Adenis A, Pignon JP, Francois E, Chauffert B, Ichante JL, et al. Efficacy and safety of bevacizumab-based combination regimens in patients with previously untreated metastatic colorectal cancer: final results from a randomised phase II study of bevacizumab plus 5-fluorouracil, leucovorin plus irinotecan versus bevacizumab plus capecitabine plus irinotecan (FNCLCC ACCORD 13/0503 study). *Eur J Cancer.* 2013;49:1236-45.

4. Jain RK. Normalization of tumor vasculature: an emerging concept in antiangiogenic therapy. *Science*. 2005;307:58-62.
5. Hegde PS, Jubb AM, Chen D, Li NF, Meng YG, Bernaards C, et al. Predictive impact of circulating vascular endothelial growth factor in four phase III trials evaluating bevacizumab. *Clin Cancer Res*. 2013;19:929-37.
6. Jain RK, Duda DG, Willett CG, Sahani DV, Zhu AX, Loeffler JS, et al. Biomarkers of response and resistance to antiangiogenic therapy. *Nat Rev Clin Oncol*. 2009;6:327-38.
7. Kopetz S, Hoff PM, Morris JS, Wolff RA, Eng C, Glover KY, et al. Phase II trial of infusional fluorouracil, irinotecan, and bevacizumab for metastatic colorectal cancer: efficacy and circulating angiogenic biomarkers associated with therapeutic resistance. *J Clin Oncol*. 2010;28:453-9.
8. O'Connor JP, Jackson A, Parker GJ, Roberts C, Jayson GC. Dynamic contrast-enhanced MRI in clinical trials of antivascular therapies. *Nat Rev Clin Oncol*. 2012;9:167-77.
9. Wedam SB, Low JA, Yang SX, Chow CK, Choyke P, Danforth D, et al. Antiangiogenic and antitumor effects of bevacizumab in patients with inflammatory and locally advanced breast cancer. *J Clin Oncol*. 2006;24:769-77.
10. O'Connor JP, Rose CJ, Jackson A, Watson Y, Cheung S, Maders F, et al. DCE-MRI biomarkers of tumour heterogeneity predict CRC liver metastasis shrinkage following bevacizumab and FOLFOX-6. *Br J Cancer*. 2011;105:139-45.
11. De Bruyne S, Van Damme N, Smeets P, Ferdinande L, Ceelen W, Mertens J, et al. Value of DCE-MRI and FDG-PET/CT in the prediction of response to preoperative chemotherapy with bevacizumab for colorectal liver metastases. *Br J Cancer*.

- 2012;106:1926-33.
12. Drevs J, Siegert P, Medinger M, Mross K, Strecker R, Zirrgiebel U, et al. Phase I clinical study of AZD2171, an oral vascular endothelial growth factor signaling inhibitor, in patients with advanced solid tumors. *J Clin Oncol.* 2007;25:3045-54.
  13. Morgan B, Thomas AL, Drevs J, Hennig J, Buchert M, Jivan A, et al. Dynamic contrast-enhanced magnetic resonance imaging as a biomarker for the pharmacological response of PTK787/ZK 222584, an inhibitor of the vascular endothelial growth factor receptor tyrosine kinases, in patients with advanced colorectal cancer and liver metastases: results from two phase I studies. *J Clin Oncol.* 2003;21:3955-64.
  14. Flaherty KT, Rosen MA, Heitjan DF, Gallagher ML, Schwartz B, Schnall MD, et al. Pilot study of DCE-MRI to predict progression-free survival with sorafenib therapy in renal cell carcinoma. *Cancer Biol Ther.* 2008;7:496-501.
  15. Hsu CY, Shen YC, Yu CW, Hsu C, Hu FC, Hsu CH, et al. Dynamic contrast-enhanced magnetic resonance imaging biomarkers predict survival and response in hepatocellular carcinoma patients treated with sorafenib and metronomic tegafur/uracil. *J Hepatol.* 2011;55:858-65.
  16. Hahn OM, Yang C, Medved M, Karczmar G, Kistner E, Karrison T, et al. Dynamic contrast-enhanced magnetic resonance imaging pharmacodynamic biomarker study of sorafenib in metastatic renal carcinoma. *J Clin Oncol.* 2008;26:4572-8.
  17. Eisenhauer EA, Therasse P, Bogaerts J, Schwartz LH, Sargent D, Ford R, et al. New response evaluation criteria in solid tumours: revised RECIST guideline (version 1.1). *Eur J Cancer.* 2009;45:228-47.
  18. Chef'd'Hotel C, Hermosillo G, Faugeras O. Flows of diffeomorphisms for multimodal image registration. *Biomedical Imaging*, 2002.

- Proceedings. 2002 IEEE International Symposium on: IEEE; 2002. p. 753-6.
19. Evelhoch JL. Key factors in the acquisition of contrast kinetic data for oncology. *J Magn Reson Imaging*. 1999;10:254-9.
  20. Zhu AX, Sahani DV, Duda DG, di Tomaso E, Ancukiewicz M, Catalano OA, et al. Efficacy, safety, and potential biomarkers of sunitinib monotherapy in advanced hepatocellular carcinoma: a phase II study. *J Clin Oncol*. 2009;27:3027-35.
  21. Port RE, Bernstein LJ, Barboriak DP, Xu L, Roberts TP, van Bruggen N. Noncompartmental kinetic analysis of DCE-MRI data from malignant tumors: Application to glioblastoma treated with bevacizumab. *Magn Reson Med*. 2010;64:408-17.
  22. Willett CG, Boucher Y, Di Tomaso E, Duda DG, Munn LL, Tong RT, et al. Direct evidence that the VEGF-specific antibody bevacizumab has antivascular effects in human rectal cancer. *Nature medicine*. 2004;10:145-7.
  23. Ferrara N, Gerber HP, LeCouter J. The biology of VEGF and its receptors. *Nat Med*. 2003;9:669-76.
  24. Ellis LM, Hicklin DJ. Pathways mediating resistance to vascular endothelial growth factor-targeted therapy. *Clin Cancer Res*. 2008;14:6371-5.
  25. Loupakis F, Cremolini C, Fioravanti A, Orlandi P, Salvatore L, Masi G, et al. Pharmacodynamic and pharmacogenetic angiogenesis-related markers of first-line FOLFOXIRI plus bevacizumab schedule in metastatic colorectal cancer. *Br J Cancer*. 2011;104:1262-9.



<ABSTRACT(IN KOREAN)>

대장직장암 간전이의 bevacizumab 항암 치료시  
생체표지자로서의 dynamic contrast-enhanced MRI:  
단일군, 탐색적 임상연구

<지도교수 박미숙>

연세대학교 대학원 의학과

김여은

목적: 대장직장암 간전이 환자에서 bevacizumab 항암 치료시 dynamic contrast-enhanced magnetic resonance imaging (DCE-MRI)와 혈장 cytokines과 angiogenic factors (CAFs)가 약역학적, 예후 생체표지자로서의 활용 가능성이 있는지 알아보고자 하였다.

재료 및 방법: 2011년 7월부터 2012년 3월까지 조직학적으로 확진된 대장직장암 간전이 환자 28명이 bevacizumab 단독 항암 치료 후 FOLFOX 병용 항암 치료를 받았다. 환자들의 평균 나이는 57세 (범위, 30-77세)였다. DCE-MRI (파라미터:  $K^{trans}$ , IAUC<sub>60</sub>)는 치료전, 첫번째 추적 검사 (bevacizumab 단독 항암 치료 3일째), 두번째 추적 검사 (FOLFOX 병용 항암 치료 3일째)시 촬영하였다. 혈장 CAFs (VEGF, PIGF, IL-8) 값도 같은 날 측정하였다. 무진행 생존기간 분포는 Kaplan-Meier method와 log-rank test로 분석하였다.

결과: 무진행 생존기간의 중앙값은 11.2개월이었다.  $K^{trans}$ , IAUC<sub>60</sub>, VEGF, PIGF 값은 치료전과 비교하여 첫번째 추적 검사시 유의한 차이를 보였다. 두번째 추적 검사시에는 차이가 없었다. 치료전에 비해 첫번째 추적 검사시  $K^{trans}$  가 40% 이상 감소한

환자는 무진행 생존기간이 유의하게 길었다 (위험비, 0.349; 95% CI, 0.133 - 0.912; P = .0318). 혈장 CAFs 값의 변화는 무진행 생존기간과 연관이 없었다.

결론: DCE-MRI 파라미터와 혈장 CAFs는 대장직장암 간전이에서 bevacizumab 항암 치료의 약역학적 생체표지자로 볼 수 있다. CAFs의 예후 인자로서의 유용성은 관찰되지 않았지만, bevacizumab 단독 항암 치료 3일째  $K^{trans}$ 의 변화는 예후 인자로서 의미가 있는 것으로 보인다.

---

핵심되는 말 : DCE-MRI, bevacizumab, 대장직장암 간전이