

Cerebellar type Ataxia in Middle Cerebral Artery Territory Infarction

Sang Won Seo, M.D., Ji Hoe Heo, M.D., Ji Hyun Kim, M.D., Seung Min Kim, M.D.

Department of Neurology, College of Medicine, Yonsei University

J Korean Neurol Assoc 19(6):671~673, 2001

Key Words : Cerebellar ataxia, Middle cerebral artery, Crossed cerebellar diaschisis.

(cerebellar ataxia) (motor neglect)가

가 (position sensation)

가 (tactile sensory extinction) (agraphesthesia)

가 (two points discrimination)

가 .^{1,2} 가 - . Romberg

(Single Photon Emission Computed Tomography, SPECT)

(cross cerebellar diaschisis)가 가 Romberg

1 1

75 가 6

2 , 90% . SPECT 가

(nasolabial fold)

가

가

Manuscript received June 10, 2001.
Accepted in final form October 30, 2001.

* Address for correspondence

Seung Min Kim, M.D.
Department of Neurology,
College of Medicine, Yonsei University
134 Sinchon-dong, Seodaemoon-gu, Seoul, 120-752, Korea
Tel : +82-2-361-5461 Fax : +82-2-393-0705
E-mail : kims@yumc.yonsei.ac.kr

(sensory ataxia)

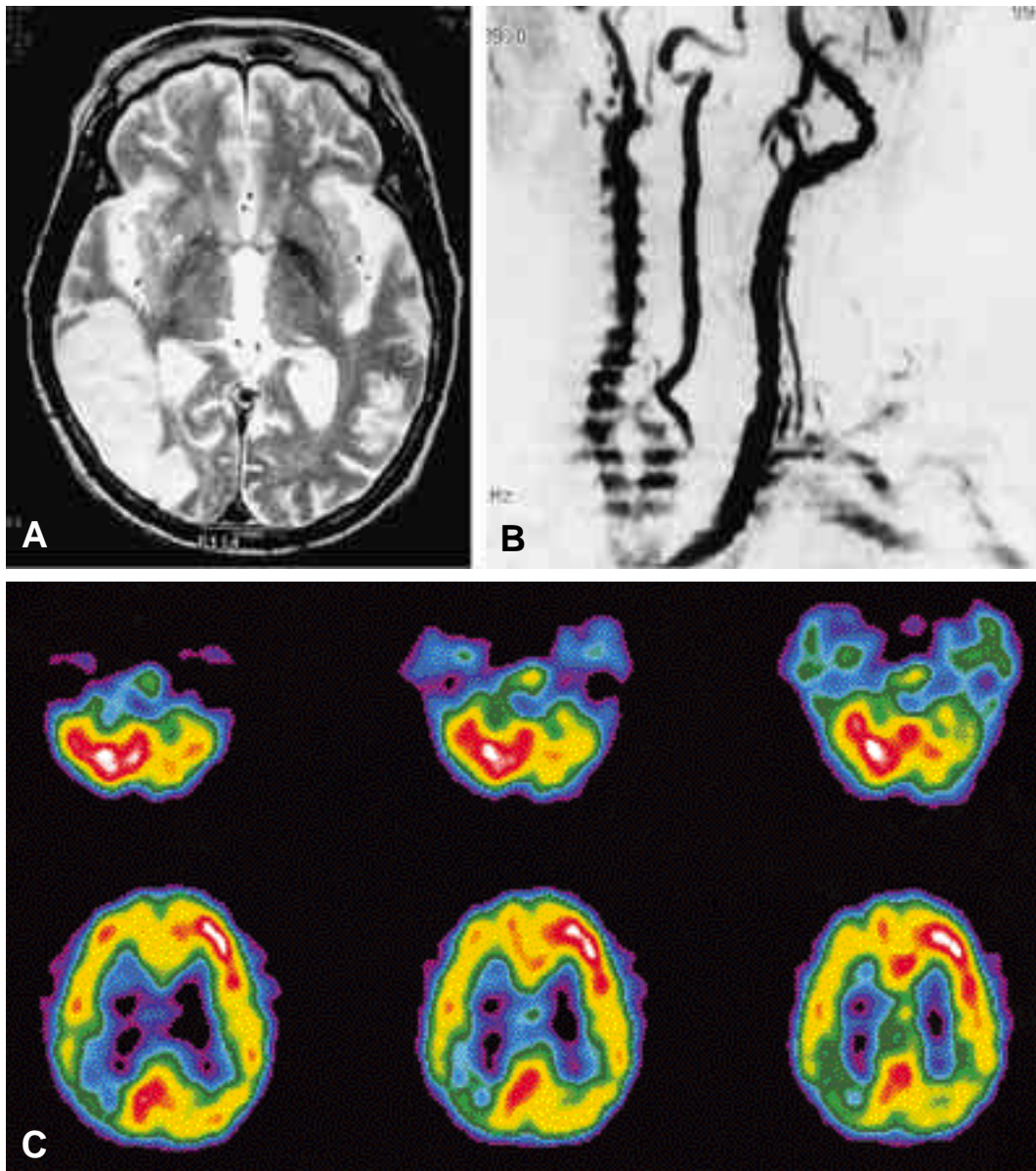


Fig. 1-A. Brain MRI T2 weighted image shows high signal intensity lesions, which is compatible with a cerebral infarction, in the middle cerebral artery territory, especially inferior parietal and temporal lobes. **B.** MRA of neck shows severe stenosis of the right internal carotid artery. **C.** Brain 99mTc-ECD SPECT shows hypoperfusion in the right middle cerebral artery territory and the left cerebellum, suggesting crossed cerebellar diaschisis.

가
 Critchley²
 가^{1,3} Ghika³
 32 4%

가 (paracentral lobule) (post-central gyrus)¹
 (position emission tomography)

가⁶, Ghika³

가

SPECT

. Atting ⁶

SPECT

“ inferior parietal association cortex-cerebellar anterior lobe circuit ”

^{6,7}

50%

⁷

가

가

REFERENCES

1. Appenzeller O, Hanson JC. Parietal ataxia. *Arch Neurol* 1966;15:264-269.
2. Critchley M. The Parietal Lobes. 1st ed. Baltimore. William & Wilkins, 1953;475-490.
3. Ghika J, Ghika-Schmid F, Bogousslavsky J. Parietal motor syndrome: a clinical description in 32 patients in the acute phase of pure parietal strokes studied prospectively. *Clin Neurol Neurosurg* 1998;100:271-282.
4. Tredici G, Barajon I, Pizzini G, Sanguineti I. The organization of corticopontine fibres in man. *Acta Anat* 1990;137:320-323.
5. Tanaka M, Kondo S, Hirai S, Ishiguro K, Ishihara T, Morimatsu M. Crossed cerebellar diaschisis accompanied by hemiataxia: a PET study. *J Neurol Neurosurg Psychiatry* 1992;55:121-125.
6. Attig E. Parieto-cerebellar Loop Impairment in Ataxic Hemiparesis. *Can J Neurol Sci* 1994;21:15-23.
7. Feeney DM, Baron JC. Diaschisis. *Stroke* 1986;17:817-830.