

Histological Evaluation on the
Biocompatibility and Degradation of
Poly Lactic-co Glycolic Acid (PLGA) /
Inorganic Filler Matrix in Surgically Created
Intrabony 1-wall Defect in Beagle Dog

Jae -Youn Lee

The Graduate School

Yonsei University

Department of Dental Science

Histological Evaluation on the
Biocompatibility and Degradation of
Poly Lactic-co Glycolic Acid (PLGA) /
Inorganic Filler Matrix in Surgically Created
Intrabony 1-wall Defect in Beagle Dog

The Master's Thesis
submitted to the Department of Dental Science
and the Graduate School of Yonsei University
in partial fulfillment of the requirements for the degree of
Master of Dental Science

Jae -Youn Lee

December 2008

This certifies that the dissertation thesis
of Jae-Youn Lee is approved.

Thesis Supervisor: Chong-Kwan Kim

Kyoo-Sung Cho

Seong-Ho Choi

The Graduate School
Yonsei University

December 2008

감사의 글

이 논문의 처음 계획에서부터 완성에 이르기까지 소상한 가르침을 베풀어주시고 세세한 부분까지 신경 써 주신 김종관 교수님께 깊은 감사를 드립니다. 바쁘신 와중에도 논문 교정과 심사를 맡아주신 최성호 교수님과 조규성 교수님께 큰 감사를 드립니다.

대학원 과정을 시작할 수 있도록 도움을 주시고 격려해주신 이의웅 학장님, 정인원 원장님께 감사드리고 수련 기간 동안 한 사람의 치주과 의사로 성장할 수 있도록 가르침을 주신 이학철 원장님, 여영신 과장님께 진심으로 존경과 감사를 전합니다.

직장생활과 학업을 병행하며 무사히 학위를 마칠 수 있도록 배려해주신 류한열 원장님 감사드립니다.

그리고 논문과 실험 및 대학원 생활 내내 많은 조언과 도움을 주신 치주과 의국 선생님들께도 고마움을 전합니다.

끝으로 늘 곁에서 따뜻하게 지켜주시는 부모님께 감사와 사랑을 전합니다.

2009 년 1 월

이 재 연

Table of Contents

ABSTRACT (ENGLISH)	iv
I. INTRODUCTION	1
II. MATERIALS AND METHODS	4
A. Materials	4
1. Animals	4
2. PLGA/inorganic filler matrix Fabrication	4
B. Methods	5
1. Surgical Procedures	5
2. Clinical Records	6
3. Histological Procedures	7
III. RESULTS	8
1. Clinical observations	8
2. Histological Observations	8
IV. DISCUSSION	10

V. CONCLUSION	13
REFERENCES	14
FIGURES	21
ABSTRACT (KOREAN)	29

LIST OF FIGURES

Figure 1. Photomicrographs of the junctional epithelium (JE) (X100)	21
Figure 2. Photomicrographs of the connective tissue (CT) (X200)	22
Figure 3. Photomicrographs of the alveolar bone crest (X200)	23
Figure 4. Photomicrographs of the periodontal ligament (PDL) space (X200)	24
Figure 5. Photomicrographs of the newly formed bone (NB) (X400)	25
Figure 6. Photomicrographs of the newly formed cementum (NC) (X400)	26
Figure 7. Photomicrographs of the notch (N) (X100)	27
Figure 8. Photomicrographs of the newly formed bone (NB) (X400)	28

ABSTRACT

Histological Evaluation on the Biocompatibility and Degradation of Poly Lactic-co Glycolic Acid (PLGA) / Inorganic Filler Matrix in Surgically Created Intrabony 1-wall Defect in Beagle Dog.

Regeneration of tooth supporting tissues that caused by periodontal and peri-implant tissue destruction is a major goal of reconstructive therapy. One approach to induce periodontal regeneration, bioactive growth factors have been locally applied to the root surface in order to facilitate the cascade of wound-healing events. Growth factors require appropriate scaffolds to provide long-term release of them for wound healing. The scaffolds should be biocompatible and biodegradable. It also should be space making and facilitate blood clot stabilization.

Absorbable Collagen Sponge (ACS), Poly (Lactic-co-glycolic acid) (PLGA) and other bone substitutes were introduced by researchers as scaffolds of the growth factors. The purpose of this study was to evaluate the biocompatibility and adequate degradation of newly developed PLGA/inorganic filler matrix in the surgically

created 1-wall intrabony defect in the beagle dog by histological observation of 8 weeks.

Bilateral one-wall intrabony periodontal defects (mesio-distal width: 4mm, apico-coronal depth 5mm) were surgically created in the premolar region in the mandible of five dogs.

The control group was treated with conventional flap operation, and the experimental group was treated with conventional flap operation and PLGA/inorganic filler matrix application. All the animals were sacrificed after 8 weeks of healing period, and clinical and histological evaluation were performed.

All defect sites were healed uneventfully with minimal signs of inflammation clinically. In both groups, regenerated periodontal tissues including cementum, periodontal ligament were well characterized with it's property. PLGA/inorganic filler matrix were degraded within the connective tissue, and around the newly formed alveolar bone during the observation time. The histological evaluation demonstrated robust regeneration of periodontal tissues.

The application of a PLGA in the 1-wall intrabony defects showed to be biocompatible and biodegradable. Therefore use of a PLGA/inorganic filler matrix

in conjunction with periodontal regeneration materials could be a good candidate for scaffold of bioactive growth factors in promoting periodontal tissue regeneration.

Key words : PLGA, carrier, periodontal regeneration, one-wall intrabony defect

**Histological Evaluation on the Biocompatibility and
Degradation of Poly Lactic-co Glycolic Acid (PLGA) /
Inorganic Filler Matrix in Surgically Created Intrabony
1-wall Defect in Beagle Dog.**

Jae-youn Lee

Department of Dental Science
Graduate School, Yonsei University
(Directed by Prof. Chong-Kwan Kim, D.D.S., M.S.D., PhD.)

I. INTRODUCTION

Regeneration of tooth supporting tissues that caused by periodontal and peri-implant tissue destruction is a major goal of reconstructive therapy. One approach to induce periodontal regeneration, bioactive growth factors have been locally applied to the root surface in order to facilitate the cascade of wound-healing events. Bioactive growth factors require appropriate scaffolds to provide longer-term release of growth

factors for wound healing. The scaffolds should be biocompatible and biodegradable. It also should be space making and facilitate blood clot stabilization.

Absorbable Collagen Sponge (ACS), Poly (Lactic-co-glycolic acid) (PLGA) and other bone substitutes were introduced by researchers as scaffolds of the growth factors. Collagen scaffolds has been regarded as one of the most useful scaffold for many years owing to its excellent biocompatibility and safety associated with its biological characteristics, such as biodegradability and weak antigenicity^{23,24}. But the absorbable collagen sponge is easily collapsed and has short releasing time^{24,25,26}. An appropriate carrier acting as a slow delivery vehicle for growth factor is required for maximal clinical effect¹.

PLGA is degraded by hydrolysis and enzymatic activity and have a range of mechanical and physical properties that can be engineered appropriately to suit a particular application³⁴.

Matsumoto et al. previously reported that there was no signs of bone resorption or inflammation on the application of PLGA fixation screws to human patients¹⁸. Van Sliedregt et al. investigated four types of polylactides using cell cultures of rat epithelial cells in addition to human fibroblasts and osteosarcoma cells, and reported the biocompatibility of the PLGAs was satisfactory in general³³. Piattelli reported limited residual amount of PLA/PGA(1%) at 6-8 months after implantation of PLA/PGA copolymer. Histomorphometric analysis revealed 43% of mineralized bone

with complete absence of inflammatory response¹⁸. Consistently, PLGA composite sponge implanted in post-extraction sites resulted in the formation of matured, mineralized and well-structured bone after 6 months of healing. Particles of grafted material could not be identified in any of the biopsied site¹³. Herberg et al. reported that the PLGA composite is a good candidate for scaffold of growth factor. The PLGA composite showed a highly porous space-providing structure and effectively induced coagulation exhibiting an intimate interaction with the fibrin clot. Additionally, the composite was conveniently injectable for ease of use³⁵.

The purpose of this study was to histologically evaluate the biocompatibility and adequate degradation of newly developed PLGA/inorganic filler matrix in the surgically created 1-wall intrabony defects of beagle dog.

II. MATERIALS AND METHODS

A. Materials

1. Animals

Five 15-month-old male beagle dogs, each weighing approximately 12kg, were used in this study. The animals were all systemically healthy and had intact dentition with healthy periodontium. The Institutional Animals Care and Use Committee, Yonsei Medical Center, Seoul, Korea approved the selection of the animals, managements, surgical protocol, and the preparation routines. The animals were fed a soft diet throughout the study, in order to reduce the chance of mechanical interference with the healing process during food intake.

2. PLGA/inorganic filler matrix Fabrication

The novel composite constituted a bioresorbable poly (Lactic-co-glycolic acid) (PLGA) and various ingredient (SCil Technology, Martinsried, Germany).

PLGA composite was manufactured as follows: Poly (D,L-lactic-co-glycolic acid) and polyethylene glycol 1500 were solved in polyethylene glycol 300 by heat

treatment. Calcium sulfate, D(-)-Mannitol, and cellulose ether, were dispersed in the polymeric solution.

B. Methods

1. Surgical Procedures

All surgical procedures were performed under general anesthesia induced by an intravenous injection of atropine (0.04 mg/kg; Kwangmyung Pharmaceutical Ind. Co. Ltd., Seoul, Korea) and an intramuscular injection of a combination of xylazine (Rompun, Bayer Korea Co., Seoul, Korea) and ketamin (Ketara, Yuhan Co., Seoul, Korea), followed by inhalation (Gerolan, Choongwae Pharmaceutical Co., Seoul, Korea). Routine dental infiltration anesthesia (2% lidocaine hydrochloride with 1/80,000 epinephrine) was used at the surgical sites. The mandibular third premolars were extracted prior to the experimental surgery, and the extraction sites were allowed for socket healing.

After 8 weeks of healing period, the defect was performed as the procedure by Kim et al. In briefly, full thickness mucoperiosteal flaps were elevated and 1-wall “box-type” intrabony defects(5 mm depth, 4 mm width, 4 mm height)were surgically

created at the distal aspect of the first premolars, and at the mesial aspect of the third premolar^{28, 29}. Following root planning, a reference notches were made with a 1/4-round bur on the root surface at the base of the defects. Defects in the experimental sides were filled with PLGA and defects in the control sides were received a flap operation only.

Next, the mucoperiosteal flaps were repositioned and sutured with resorbable suture materials (Vicryl 5.0 Polyglactin 910, Ethicon. Johnson & Johnson, USA). Post-surgical management included intramuscular administration of antibiotics (Cefazoline Sodium 20mg/kg; Yuhan Corporation, Seoul, Korea) for 3 days and daily topical dressing of 0.2% chlorhexidine solution (Hexamedin[®], Bukwang Pharmaceutical Co., Seoul, Korea) for infection control for 7 days.

The remaining dentition received oral prophylaxis during the healing period. 8 weeks later, the animals were euthanized using an overdose of pentobarbital (90 -120 mg/kg; IV) and block sections including the surgical sites were removed for the histologic analysis.

2. Clinical Records

Clinical observation were done through the experimental time.

3. Histologic Processing

Block sections including defect sites and tooth, surrounding alveolar bone and soft tissues were collected. The block specimens were fixed in 10% buffered formalin for 10 days, decalcified in 5% formic acid for 14 days, dehydrated in ethanol and embedded in paraffin. The sections were stained with hematoxylin-eosin. Serial sections of 4 μ m thick thickness were cut in a mesial-distal direction at 80 μ m intervals. The three most central sections of each defect site were observed using incandescent and polarized light microscopy (Olympus Multi-view microscope BH2, Japan).

III. RESULTS

1. Clinical observations

Surgical procedures were uneventful and without complication. Despite the extent and size of the surgically involved areas, wound closure was successfully maintained throughout the experiment for all defects. During this study, no sign of infection or clinical complication were found.

2. Histologic observations

All of the specimens were well tolerated and there were no histologically observable pathological tissue reactions at the time of necropsy. However, some cases seemed to cause an initial inflammation of the bone surrounding the intrabony 1-wall defects that were subsequently repaired along with the bone healing of the defects.

An epithelial attachment of variable length was observed in all sites irrespective of treatment with no clear distinction between the groups (Fig. 1). Connective tissue attachment was in varying dimension along the root surface. Findings of PLGA was not detectable with minimal inflammatory cell infiltration in all the groups (Fig. 2). Regenerated alveolar bone was more or less formed above the notch area (Fig. 3).

Both groups maintained good periodontal ligament space, and showed no evidence of ankylosis and resorption. Periodontal ligament in both groups were observed to have a regular pattern and a dense fiber arrangement. Dense fibers showing periodontal regeneration were embedded into the newly formed bone and new cementum obliquely or perpendicularly (Fig. 4,5,6).

All experimental sites showed new bone and cementum formation along the planed root surface (Fig. 7). The newly formed cementum was compared of cellular and acellular cementum in both groups. In the cementum layer below the bone level, cementoblasts were arranged closely and the fibers were embedded perpendicularly (Fig. 6). In addition, a thin layer of cementum was also observed above the newly formed bone level. In this cementum layer, the cementoblasts were rarely observed and the fibers showed a parallel orientation.

The crest of the newly formed bone was mostly woven bone, and the newly formed bone appeared moderate cellularity and density in both control and PLGA groups (Fig. 8). The osteoblasts were densely arranged along the new bone surface. Sites receiving the PLGA composite showed no apparent effect on bone formation, indicating that this biomaterial did not appear to obstruct or otherwise compromise bone formation.

IV. DISCUSSION

The major challenges in contemporary periodontal therapy are to re-establish soft tissue attachment to newly formed cementum on the root surface and to restore lost bone. This requires regeneration of gingival connective tissues destroyed by inflammation, formation of new cementum and restoration of bone loss, and, most importantly, new attachment of connective tissue fibers to previously diseased root surfaces^{30,31}. More recently, the application to the root surfaces of a variety of growth and differentiation factors to stimulate cell repopulation of periodontal defects and subsequently induce regeneration has been investigated²⁷. Bioactive growth factors require appropriate scaffolds to provide long-term release of growth factors to heal wounds¹⁹.

Poly (lactic acid), poly (glycolic acid), and their copolymers have been approved by the Food and Drug Administration for use as sutures, vascular grafts, drug carriers, and scaffolds for tissue engineering. PLGA copolymers degrade over time by releasing of lactic acid monomers that are oxidized to pyruvic acid¹² and its framework makes the space maintained for enough time. Because the mechanical properties of these polymers are dependent on the molecular weight of the component polymers, high-molecular-weight poly (DL-lactide-co-glycolide) (PLGA) copolymers

are used as scaffolds for tissue engineering^{9,10}. The use of low-molecular weight PLGA copolymers as a delivery vehicle for bioactive factors around dental and orthopedic implants has yet to be investigated^{5,6}.

With the advent of tissue engineering in recent years PLGA is also rapidly gaining recognition in the scaffolds or carriers of cells, extracellular matrix components, and bioactive agents³⁴. Polylactide and polyglycolide acids are considered to be suitable matrices for bone and soft connective tissue¹⁴. It is apparent that the rhBMP-2 was released in an active form at the implant site during the degradation of the copolymer, resulting in the induction of new bone formation within 3 weeks after implantation⁶. More recently, it has been demonstrated that transplantation of cloned cementoblasts into PLGA carrier leads to the repair of large periodontal alveolar bone defects in rodents¹⁷.

Minenna et al. evaluated the clinical outcome of re-constructive surgery in deep intra-osseous defects by means of open flap curettage in conjunction with a PLA/PGA copolymer implant as compared with open flap curettage procedure alone. The results demonstrated that the use of PLA/PGA did not provide an additional benefit in terms of CAL gain and PD reduction compared with control procedure²².

The results of this study indicate that regeneration of the periodontal tissues following was similar in the intrabony defects where PLGA was inserted compared to what was observed in the intrabony defect of natural healing. The histological

observation indicated that, there was more or less cellularity and bone formation in process of maturation in both two groups. In addition, dense and well organized form of periodontal ligaments was shown. Herberg et al. previously reported that the PLGA composite seems to be effective in periodontal regeneration³⁵. These results support that PLGA can be a good candidate for bioactive growth factor carrier.

The PLGA composite showed a highly porous space-providing structure. It effectively induce coagulation exhibiting an intimate interaction with the fibrin clot. 8 weeks following operation, no particles of the grafted materials could be identified in the specimens without complications such as ankylosis or root resorption. Absence of inflammatory and foreign-body giant cells in the biopsies indicate a complete biodegradation of the materials during the period of observation.

These results indicate that a PLGA composite has potential for the use in delivery of cells/factors to the periodontal tissue regeneration without any complications.

V. CONCLUSION

In conclusion, the application of PLGA/inorganic filler matrix in the 1-wall intrabony defects showed to be biocompatible and biodegradable. These results support that PLGA/inorganic filler matrix in conjunction with periodontal regeneration materials could be a good candidate for scaffold of bioactive growth factors in promoting periodontal tissue regeneration.

REFERENCES

1. Fujimura K, Bessho K, Kusumoto K, Ogawa Y, Iizuka T. Experimental studies on bone inducing activity of composites of atelopeptide type collagen as a carrier for ectopic osteoinduction by rhBMP-2. *Biochem Biophys Res Commun* 1995;208:316-322.
2. Wang EA, Rosen V, D'Alessandro JS, Bauduy M, Cordes P, Harada T, Israel DI, Hewick RM, Kerns KM, LaPan P. Recombinant human bone morphogenetic protein induces bone formation. *Proc Natl Acad Sci USA* 1990;87:2220-2224.
3. Bessho K, Kusumoto K, Fujimura K, Konishi Y, Ogawa Y, Tani Y, Iizuka T. Comparison of recombinant human bone morphogenetic protein. *Br J Oral Maxillofac Surg* 1999;37:2-5.
4. Bessho K, Iizuka T. The possibility of application of bone morphogenetic proteins(BMPs) for reconstruction of jaw bones. *Oral Oncology* 1995;4:304-307.
5. Isobe M, Yamazaki Y, Oida S, Ishihara K, Nakabayashi N, Amagasa T. Bone

morphogenetic protein encapsulated with a biodegradable and biocompatible polymer.

J Biomed Mater Res 1996;32:433-438.

6. Bessho K, Carnes D.L, Ong J. L. Experimental studies on bone induction using low-molecular-weight poly(DL-lactide-co-glycolide) as a carrier for recombinant human bone morphogenetic protein-2. J Biomed Mater Res 2002;61:61-65.

7. Von Recum HA, Cleek RL, Eskin SG, Mikos AG. Degradation of polydispersed poly (L-lactic acid) to modulate lactic acid release. Biomaterials 1995;16:441-447.

8. Vert M, Mauduit J, Li S. Biodegradation of PLA/GA polymers: Increasing complexity. Biomaterials 1994, 15:1209-1213.

9. Gilding DK, Reed AM. Biodegradable polymers for use in surgery. Polyglycolic/poly(lactic acid) homo- and copolymers. I. Polymer 1979;20:1459-1464.

10. Witschi C, Eoelker E. Influence of the microencapsulation method and peptide loading on poly(lactic acid) and poly(lactic-co-glycolic acid) degradation during in vitro testing. J Controlled Release 1998;51:327-341.

11. Ramachandran Nair P. N, Schung. Observations on healing of human tooth extraction sockets implanted with bioabsorbable polylactic-polyglycolic acids (PLGA) copolymer root replicas: A clinical, radiographic, and histologic follow-up report of 8 cases. *Oral Surg Oral Med Oral Pathol Oral Radiol Endod* 2004;97:559-69.

12. Peltoniemi H, Ashammakhi N, Kontio R, et al. The use of bioabsorbable osteofixation devices in craniomaxillofacial surgery. *Oral Surg Oral Med Oral Pathol Oral Radiol Endod* 2002;94:5-14.

13. Serino G, Biancu S, Iezzi G, Piattelli A. Ridge preservation following tooth extraction using a polylactide and polyglycolide sponge as space filler: a clinical and histological study in humans. *Clin. Oral Impl. Res.* 2003;14:651-658.

14. Laurencin, C.T. & Lanw, J.M. (1999) Poly-lactide acid and poly-glycolide acid: orthopedic and surgery applications. In: *Tissue Engineering: Application in Maxillofacial Surgery and Periodontics*, 325-339. Chicago: Quintessence Publishing Co. Inc.

15. Holland, S.J., Tighe, B.J. & Gould, P.L. (1986) *Polymers for biodegradable medical device, I. The potential of polyesters as controlled macromolecular release*

system. *Journal of Controlled Release* 4;155-180.

16. Taba M Jr, Jin Q, Sugai JV, Giannobile WV. Current concepts in periodontal bioengineering. *Orthop Craniofacial Res.* 2005;8:292-302.

17. Zhao M, Jin Q, Berry JE, Nociti FH Jr, Giannobile WV, Somerman MJ. Cementoblast delivery for periodontal tissue engineering. *J Periodontol* 2004;75:154-61.

18. Matsumoto MA, Filho HN, Padovan LEM, Kawakami RY, Taverira LAA. Tissue response to poly-L-lactide acid-polycolic acid absorbable screws in autogenous bone grafts: a histologic morphological analysis. *Clin. Oral Impl. Res.* 2005;16:112-118.

19. Giannobile W.V. Periodontal tissue engineering by growth factors. *Bone* 1996;19(1 Suppl): 235-375.

20. Ripamonti U, Reddi AH. Periodontal regeneration: potential role of bone morphogenetic proteins. *J Periodont Res* 1994;29:225-235.

21. Bartold P.M, Xiao Y, Lyngstaadas SP, Paine ML, Snead ML. Principles and

applications of cell delivery systems for periodontal regeneration. *Periodontol* 2000. 2006;41:123-135.

22.Minenna L, Herro F, Sanz M, Trombelli L. Adjunctive effect of a polylactide/polyglycolide copolymer in the treatment of deep periodontal intra-osseous defects: a randomized clinical trial. *J Clin Periodontol* 2005;32:456-461.

23.Lee CH, SinglaA, Lee Y. Biomedical applications of collagen. *Int J Pharm* 2001;221;1-22.

24.McPherson JM. The utility of collagen-based vehicles in delivery of growth factors for hard and soft tissue wound repair. *Clin Mater* 1992;9:225-234.

25.Uludag H, Gao T, Porter TJ, Friess W, Wozney JM. Delivery systems for BMPs: factors contributing to protein retention at an application site. *J Bone Joint Surg Am* 2001;83-A Suppl 1:S128-135.

26.Kleinman HK, Philp D, Hoffman MP. Role of the extracellular matrix in morphogenesis. *Curr Opin Biotechnol* 2003;14:526-532.

27. Bartold PM, McCulloch CA, Narayanan AS, Pitaru S. Tissue engineering: a new paradigm for periodontal regeneration based on molecular and cell biology. *Periodontol* 2000;24:253-269.

28. Kim CS, Choi SH, Cho KS, Chai JK, Wikesjo UM, Kim CK. Periodontal healing in one-wall intra-bony defects in dogs following implantation of autogenous bone or a coral-derived biomaterial. *J Clin Periodontol* 2005;32:583-589.

29. Kim HY, Kim CS, Jhon GJ, et al. The effect of safflower seed extract on periodontal healing of 1-wall intrabony defects in beagle dogs. *J Periodontol* 2002;73:1457-1466.

30. Garrett S. Periodontal regeneration around natural teeth. *Ann Periodontol* 1996;1:621-666.

31. Minabe M. A critical review of the biologic rationale for guided tissue regeneration. *J Periodontol* 1991;62:171-179.

32. Seeherman H. The influence of delivery vehicles and their properties on the repair of segmental defects and fractures with osteogenic factors. *J Bone Joint Surg Am*

2001;83-A Suppl 1:S79-81.

33. Van Sliedregt A, Radder AM, De Groot K, Van Blitterswijk CA. In vitro biocompatibility testing of polylactides Part I Proliferation of different cell types. *J Mater Sci Mater Med* 1992;3:365-370.

34. Athanasiou KA, Agrawal CM, Barber FA, Burkhart SS. Orthopaedic applications for PLA-PGA biodegradable polymers. *The journal of arthroscopic and related surgery*. 1998;14(7):726-737.

35. Herberg S, Siedler M, Pippig S, Schuetz A, Dony C, Kim CK, Wikesjo U.M.E. Development of an injectable composite as a carrier for growth factor-enhanced periodontal regeneration. *J Clin Periodontol* 2008;35:976-984.

FIGURES

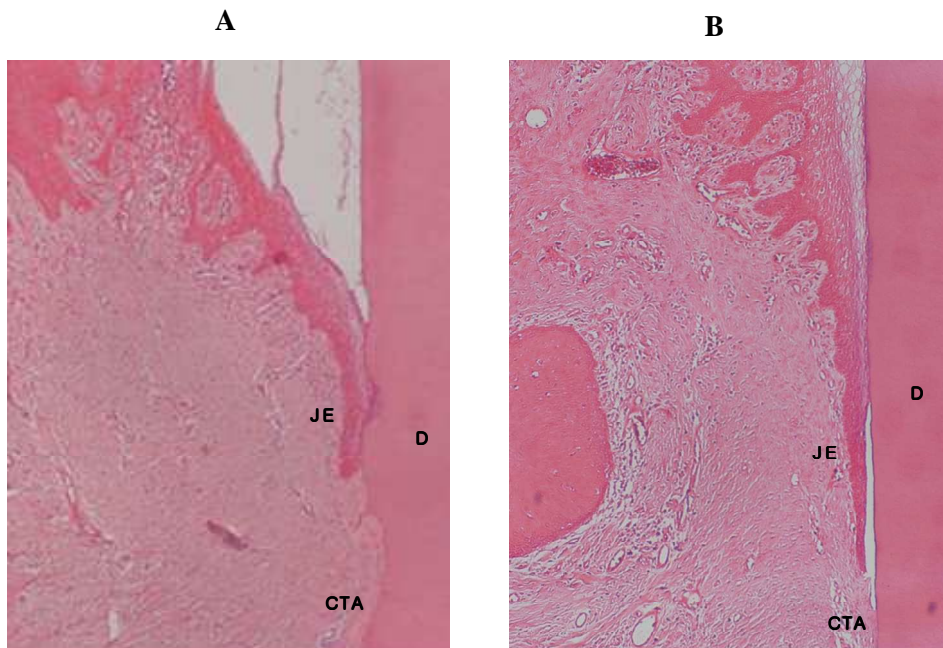


Figure 1. Representative photomicrographs of Sham (A) and PLGA (B) group at 8 weeks postsurgery; hematoxylin and eosin (original magnification x 100). Junctional epithelium (JE) was in varying dimension along the root surface. Healing appeared similar within and among the groups.

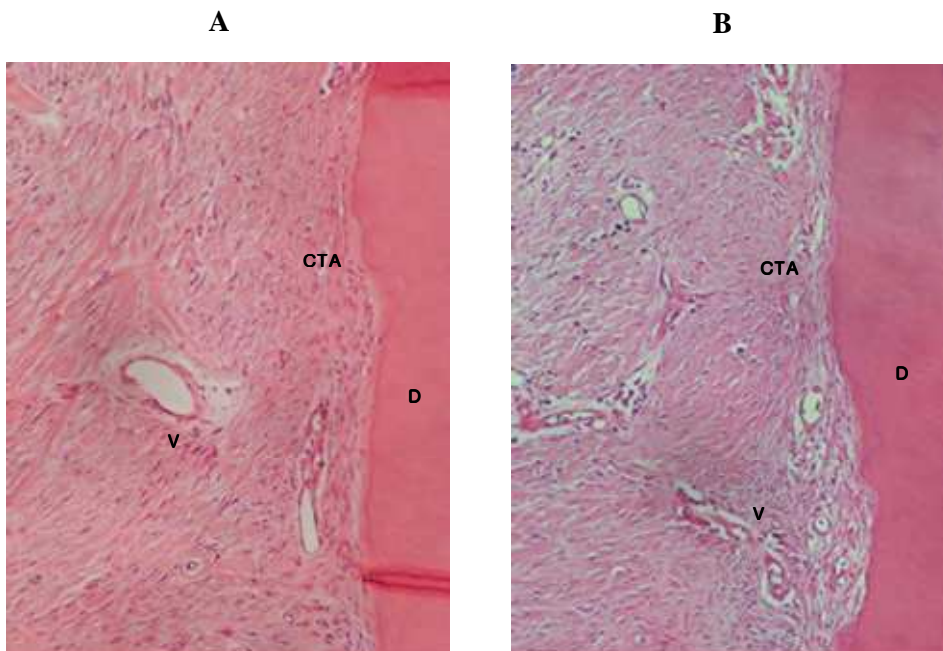


Figure 2. Representative photomicrographs of Sham (A) and PLGA (B) group at 8 weeks postsurgery; hematoxylin and eosin (original magnification x 200). Connective tissue attachment (CTA) was in varying dimension along the root surface. Findings of PLGA was not detectable with minimal inflammatory cell infiltration in both groups.

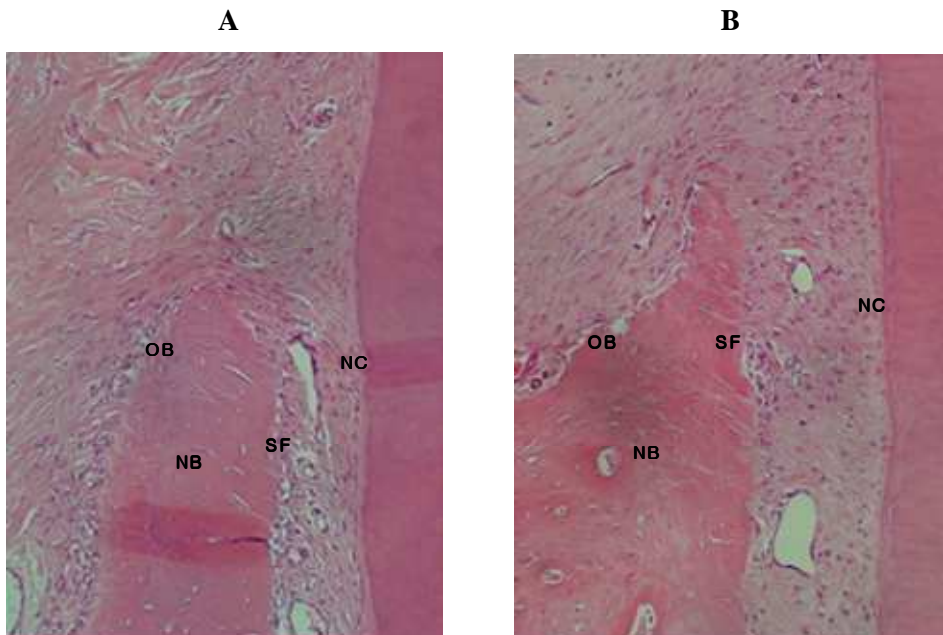


Figure 3. Representative photomicrographs of Sham (A) and PLGA (B) group at 8 weeks postsurgery; hematoxylin and eosin (original magnification x 200). Regenerated alveolar bone was more or less formed above the notch area. Findings of PLGA was not detectable with no evidence of ankylosis.

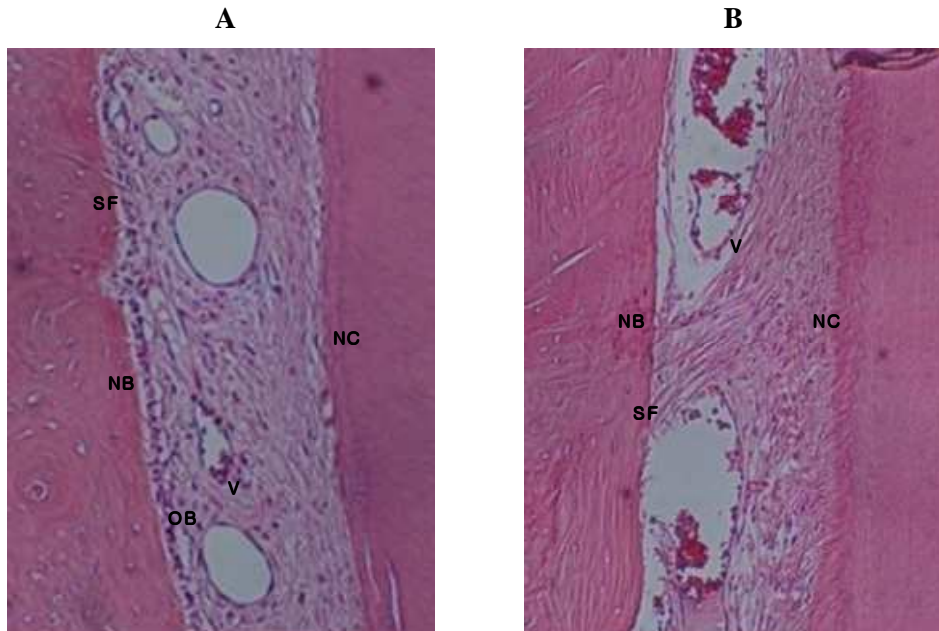


Figure 4. Representative photomicrographs of Sham (A) and PLGA (B) group at 8 weeks postsurgery; hematoxylin and eosin (original magnification x 200). Obliquely or perpendicularly oriented new Sharpey's fibers (SF) inserted in the new bone (NB) and new cementum (NC). Blood vessels (V) and organized form of periodontal ligament was shown in the both groups. Healing appeared similar within and among the groups.

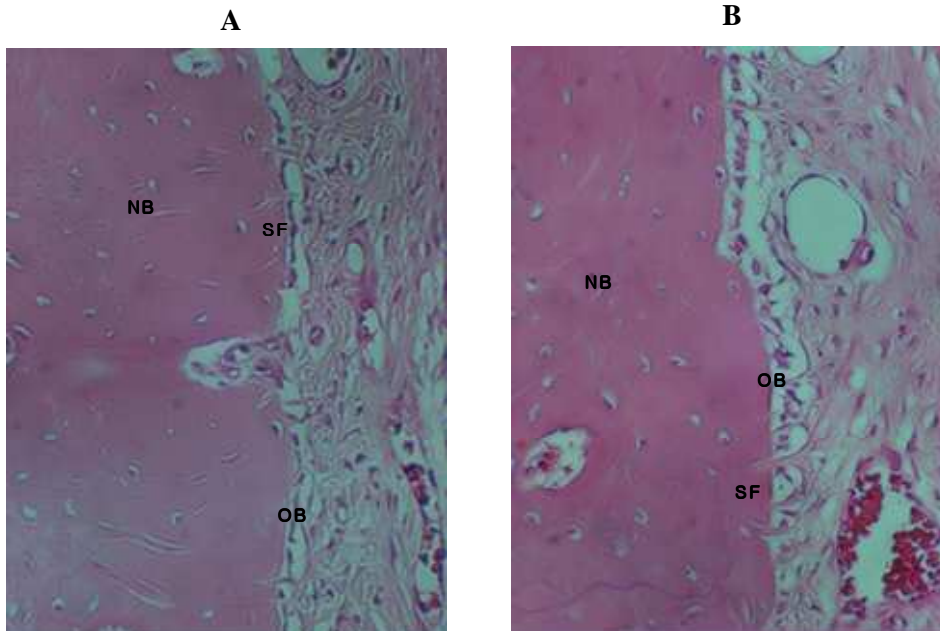


Figure 5. Representative photomicrographs of Sham (A) and PLGA (B) group at 8 weeks postsurgery; hematoxylin and eosin (original magnification x 400). Osteoblasts (OB) were arranged along the new bone (NB) surface and Sharpey's fibers (SF) inserted in the new bone in the both groups. Healing appeared similar within and among the groups.

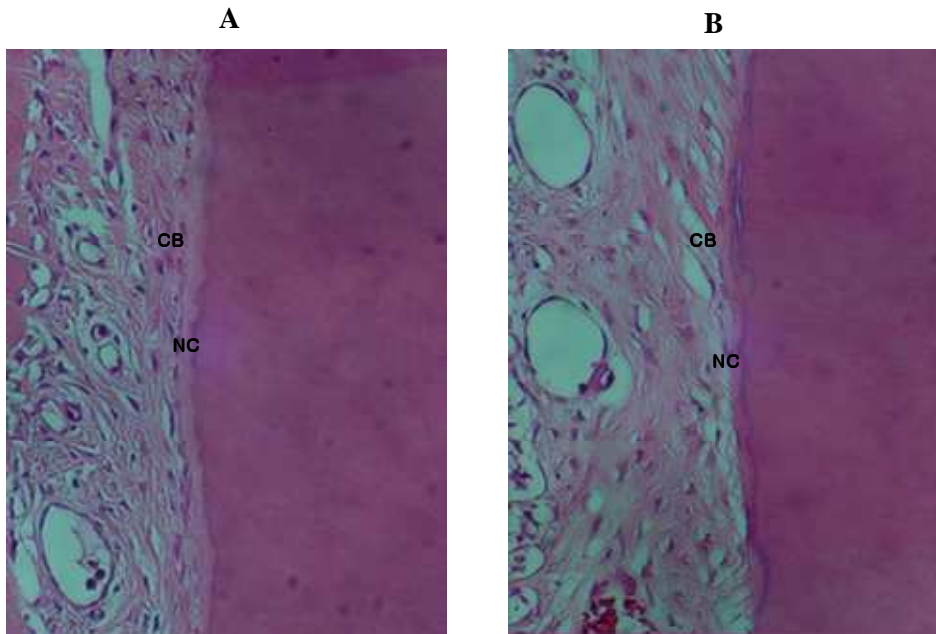


Figure 6. Representative photomicrographs of Sham (A) and PLGA (B) group at 8 weeks postsurgery; hematoxylin and eosin (original magnification x 400). In the cementum layer below the bone level, cementoblasts (CB) were arranged along the new cementum. Healing appeared similar within and among the groups.

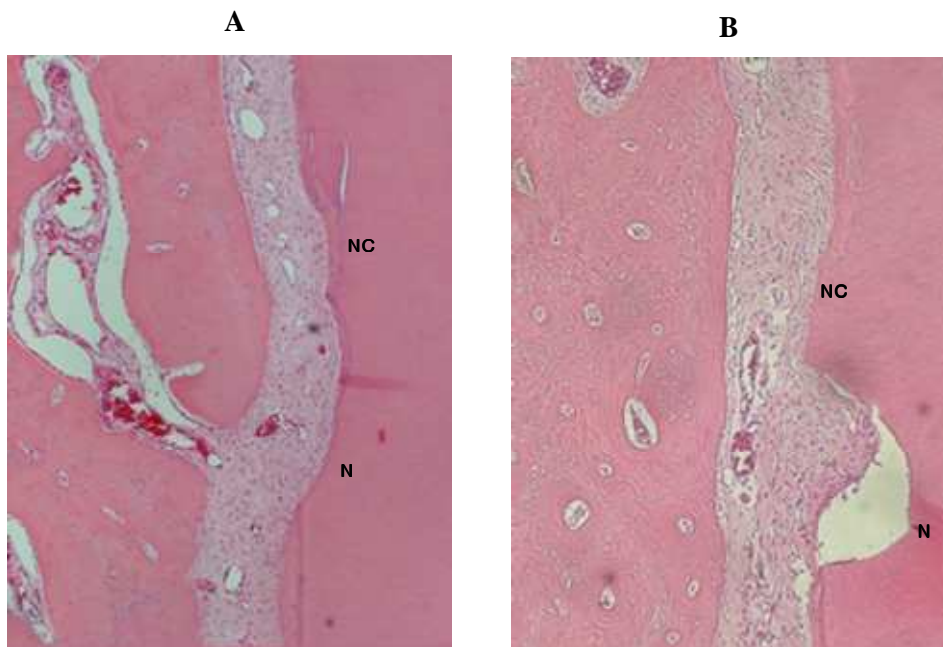


Figure 7. Representative photomicrographs of Sham (A) and PLGA (B) group at 8 weeks postsurgery; hematoxylin and eosin (original magnification x 100). New cementum (NC) formation above the notch (N) could be seen. No inflammation and ankylosis could be seen in both groups.

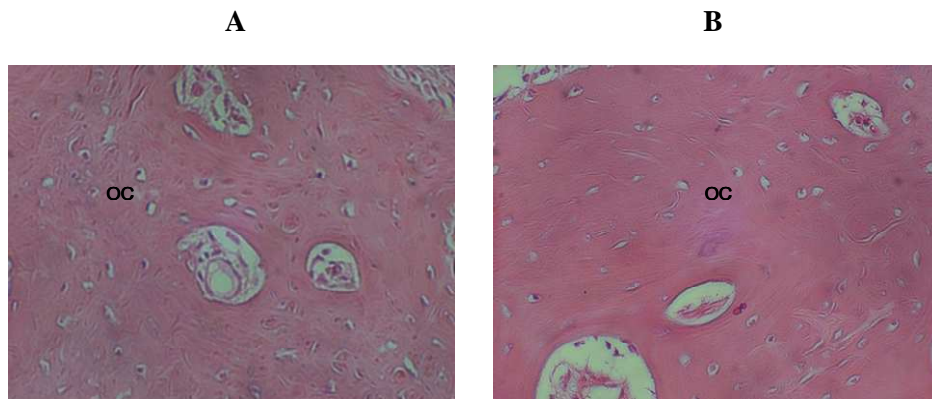


Figure 8. Representative photomicrographs of Sham (A) and PLGA (B) group at 8 weeks postsurgery; hematoxylin and eosin (original magnification x 400). The newly formed bone appeared mostly woven bone nature and more or less cellularity in process of maturation. Osteocytes (OC) could be seen within the newly formed bone. Findings of PLGA was not detectable and healing appeared similar in both groups.

-국문요약-

비글견 1벽성 골내낭에서 Poly Lactic-co Glycolic Acid
(PLGA)/Inorganic Filler Matrix의 생체 친화성 및
흡수성에 대한 조직학적 연구

< 지도교수 김 종 관 >

연세대학교 대학원 치의학과

이 재 연

치주 질환으로 인하여 소실된 치주조직을 재생시키려는 여러 술식이 많이 연구되고 있다. 그 중 bioactive factor의 적용은 치주조직의 재생에 있어서 우수한 치료법으로 평가되고 있으며, 이를 수용부에 적절히 적용하기 위한 운반체로 생체친화적인 중합체가 이용되고 있다. 본 연구의 목적은 PLGA를 inorganic filler에 혼합시킨 재료를 성견의 일벽성 골내낭에 적용하여 이 재료의 생체 친화성과 생체 흡수도를 보고자 하는 것이다.

5마리의 비글견에서 제 3 소구치를 모두 발치한 뒤, 8주간의 치유기간

이 지나고 제 2 소구치 원심면과 제 4 소구치 근심면에 5mm 깊이, 4mm 폭의 일벽성 골내낭을 형성하였다. 좌측 defect에는 PLGA/inorganic filler matrix를 이식하였고 우측에는 아무것도 이식하지 않은 대조군으로 나누어 술 후 8주에 희생하여 치유 결과를 조직학적으로 비교 관찰하였다.

조직학적 분석 결과, 모든 결손부에서 염증의 소견이 관찰되지 않았으며 치근흡수와 유착은 발견되지 않았다. 백악질과 치조골, 치주인대를 포함한 치주조직의 재생에 있어서 대조군, 실험군 간에 조직학적으로 치유양상에 있어 차이를 많이 보이지 않았으며 PLGA/inorganic filler matrix는 8주 내에 완전히 흡수되어 결합조직이나 신생골내에서 그 흔적을 발견할 수 없었다.

이러한 결과는 PLGA/inorganic filler matrix는 생체친화성 및 생체흡수성이 우수한 재료로서 치주 조직의 재생 치료에 있어서 신체활성인자의 scaffold로 사용될 수 있는 가능성을 보여주었다.

핵심 되는 말 : PLGA, 운반체, 치주재생, 일벽성 골내낭