

Lower Extremity Weakness and Back Pain from a Ruptured Iliac Artery Aneurysm - A Case Report -

Jin Kyung Cho, M.D., Yoo Sang Yoon, M.D., In Cheol Park, M.D., Seung Ho Kim, M.D.

An isolated iliac artery aneurysm is a rare condition. Its prevalence is less than 0.01% of the general population and less than 1% of all vascular aneurysms. Metachronous occurrence of an iliac artery aneurysm is very rare, and its prevalence is unknown. Most iliac artery aneurysms do not have any clinical symptoms. If there are symptoms, they are due either to compression of adjacent organs, which depends on the anatomical position of the aneurysm, or to rupture. Aneurysmal rupture can present very variable clinical symptoms, which originate from the anatomical position, so diagnosis is often delayed. We report a case of a common iliac artery and an internal iliac artery aneurysm presenting as temporary lower extremity weakness and back pain, and we present a review of related literature.

Key Words: Iliac artery, Aneurysm, Lower extremity, Weakness, Back pain

Department of Emergency Medicine, Yonsei University, College of Medicine, Seoul, Korea

134

Tel: 02) 361-5790, Fax: 02) 392-3175

E-mail: edksh@yumc.yonsei.ac.kr

: 2003 8 9 , : 2003 10 21

가

1).

(iliac artery)

가

(common iliac artery)

(internal iliac artery)

66 가 4

8

, 4

가

가

, 1

20

, 8

100/70 mmHg,

74 ,

36.1 ,

15

가

(femoral artery)

11,380/mm³(
 83.3%), 13.5 g/dL, 199,000/mm³ .
 Na⁺ 136.5 mM/L, K⁺ 3.81 mM/L,
 Cl⁻ 105.4 mM/L, AST/ALT 31/12 IU/L, BUN/Cr
 26/1.7 mg/dL, amylase/lipase 127/77 U/L, CK 177
 U/L . PT 11.3 sec(100%, 0.88 INR), aPTT 31.1
 sec , Troponin-T<0.01 ng/ml, CK-MB 3.24
 ng/ml

(psoas muscle)
 가 (Fig. 1).



Fig. 1. KUB. Right psoas margin is lost.

x3 cm 가 ,
 7x7 cm, 3
 (Fig. 2).

10x10 cm 가 가
 가 가
 (Fig. 3). 10x
 10 cm 가 (Fig. 4, 5).
 5x5 cm 가

11

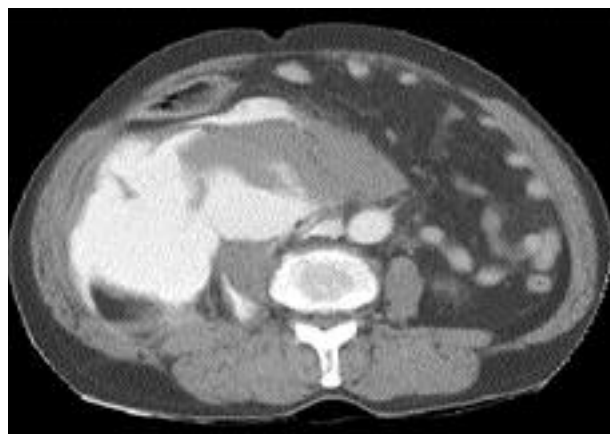


Fig. 3. Abdomino-pelvic CT. Contrast media is spilled from ruptured right common iliac artery aneurysm, 10x10 cm sized.



Fig. 2. Retrograde cystourethrogram. Bladder is displaced due to pelvic mass.



Fig. 4. Abdomino-pelvic CT. Both internal iliac artery aneurysms with thrombi are visualized.

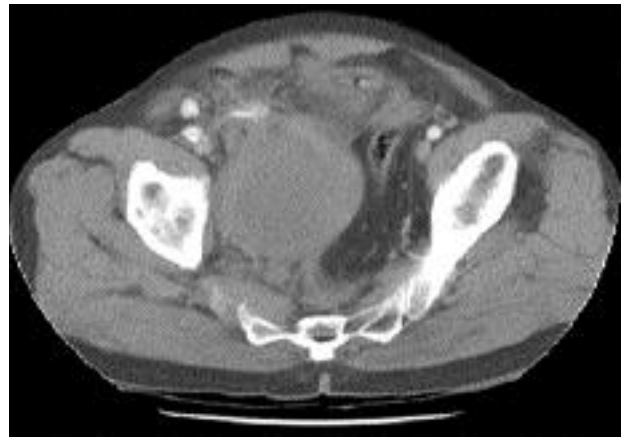


Fig. 5. Abdomino-pelvic CT. Bladder is displaced due to right internal iliac artery aneurysm.

2 가 2).
 0.01% ,
 1% 가
 3-5).
 가
 70~89% 가 ,
 5,6).
 candida, syphilis, tuberculo-
 sis 7-9).
 가
 가 10).
 가
 가 11-19).
 3 cm 0.11 ~ 0.13
 cm, 3 cm 0.25 ~ 0.28
 cm 가 가
 3 cm
 , 4 cm
 가 20).
 38% , 57%

21),
 ,
 ,
 ,
 가
 가
 가

1. Marx JA, Hockberger RS, Walls RM. Rosen 's Emergency Medicine. 5th ed. St Louis: Mosby Inc; 2002. p.233-4.
2. Krupski WC, Selzman CH, Florida R, Strecker PK, Nehler MR, Whitehill TA. Contemporary management of isolated iliac aneurysms. J Vasc Surg 1998;28:1-11.
3. Lucke B, Rea HD. Studies of aneurysm: General statistical data of aneurysm. JAMA 1921;77:935-40.
4. Muttalib M. Common iliac aneurysm rupture with sinus bradycardia. J R Soc Med 2001;94:35-6.
5. McCready RA, Pairolero PC, Gilmore JC, Kazmier FJ, Cherry KJ Jr, Hollier LH. Isolated iliac artery aneurysm. Surgery 1983;93:688-93.
6. Krupsky WC, Ernst CB, Stanley JC. Current therapy in Vascular surgery. 3rd ed. St. Louis: Mosby-Year Book, Inc; 1995. p.296-302.
7. Richardson JW, Greenfield LJ. Natural history and management of iliac aneurysms. J Vasc Surg 1988;8:165-71.
8. Tsunozuka Y, Urayama H, Ohtake H, Watanabe Y. A solitary iliac artery aneurysm caused by Candida infection. J

- Cardiovasc Surg 1998;39:437-9.
9. 1987;3:69-72.
 10. Kanazawa S, Inada H, Murakami T, Tabuchi A, Ishida A, Tsunoda T: Management of isolated iliac artery aneurysms. *J Cardiovasc Surg* 2000;41:513-4.
 11. Lowry SF, Kraft RO. Isolated aneurysms of the iliac artery. *Arch Surg* 1978;113:1289-93.
 12. Victor DW, Halverson JD, Butcher HR. Internal iliac artery aneurysm: Unusual cause of lower abdominal and pelvic symptoms: Case report. *Mo Med* 1979;76:424-6.
 13. Ali MS. Testicular pain in patient with aneurysm of the common iliac artery. *Br J Urol* 1983;55:447-8.
 14. Geelen JA, De Graaff R, Biemans RG, Prevo RL, Koch PW. Sciatic nerve compression by an aneurysm of the internal iliac artery. *Clin Neurol Neurosurg* 1985;87:219-22.
 15. Goff CD, Davidson JT, Teague N, Callis JT. Hematuria from arteriovesical fistula: unusual presentation of ruptured iliac artery aneurysm. *Am Surg* 1999;65:421-422.
 16. Victor DW Jr, Werdick GM, Proudfoot RW. Internal iliac artery aneurysm presenting as a severe constipation. *J Ky Med Assoc* 1987;85:310-2.
 17. Ozergin U, Vantanev C, Durgut K, Ozul M, Gormus N. An internal iliac artery aneurysm causing a colonic obstruction. *Surg Today* 2001;31:839-41.
 18. Conroy KM, Bush RW, Shiota MG. Isolated iliac artery aneurysm causing acute renal obstruction and fatal rectal hemorrhage. *J Clin Gastroenterol* 1994;18:255-7.
 19. Katoh J, Shindo S, Kina S, Katahira S, Osawa H, Kobayashi M et al. Rupture of an isolated internal iliac artery aneurysm into the rectum: Report of a case. *Surg Today* 1995;25:554-6.
 20. Santilli SM, Wernsing SE, Lee ES. Expansion rates and outcomes for iliac artery aneurysm. *J Vasc Surg* 2000;31:114-21.
 21. Parry DJ, Kessel D, Scott DJ. Simplifying the internal iliac artery aneurysm. *Ann R Coll Surg Engl* 2001;83:302-8.