

경부 과혈관성 종물로 발견된 캐슬만 병 1예

연세대학교 의과대학 이비인후과학교실,¹ 병리학교실²

손은진¹ · 이윤재¹ · 구자승² · 최홍식¹

A Case of Castleman's Disease Presenting as an Isolated Hypervascular Tumor in Neck

Eun Jin Son, MD¹, Yoon Jae Lee, MD¹, Ja Seung Koo, MD² and Hong-Shik Choi, MD¹

¹Department of Otorhinolaryngology and ²Pathology, Yonsei University College of Medicine, Seoul, Korea

ABSTRACT

Castleman's disease is an unusual condition of lymphoproliferation, still a rarer cause of isolated neck mass. Also known as angiofollicular lymph node hyperplasia, it is a pathological diagnosis, with three histologic variants (hyaline vascular, plasma-cell, and mixed) and two clinical types (localized and multicentric). We present a case of an isolated neck mass of long standing, which was treated by surgical excision and histopathologically confirmed as hyaline vascular type of Castleman's disease. The lesion showed distinct hypervascular features on imaging studies. Castleman's disease should be considered as a differential diagnosis in isolated hypervascular neck masses. (Korean J Otolaryngol 2004;47:1178-80)

KEY WORDS : Castleman's disease · Neck mass.

9, 12 가 .¹²⁻¹⁹⁾
9
(benign lymphoepithelial proliferative disease)
(angiofollicular lymph node hyperplasia),
(giant lymph node hyperplasia),
(lymphoid hamartoma)
1)²⁾ 가 가
, .⁹⁾
, , , , 46
(hyaline vascular type) (plasma cell type), 3 × 5 cm
(mixed type)
(localized) (multicentric)⁴⁾
1992 Kim¹¹⁾
24 VMA 2.66 mg/day (<8 mg/day),
metanephrine 35 µg/day (<300/day), normetanephrine 106 µg/day (<600 µg/day)

: (02) 3497-3461 · : (02) 3463-4750
E-mail : hschoi@yumc.yonsei.ac.kr

(Fig. 1)



Fig. 1. MR angiogram shows a 3 × 5 cm-sized well defined hypervascular mass lesion near the level of carotid bifurcation on the right side.



Fig. 2. Postcontrast neck CT image shows a densely enhancing mass posterolateral to the right internal jugular vein in the level of hyoid bone area.

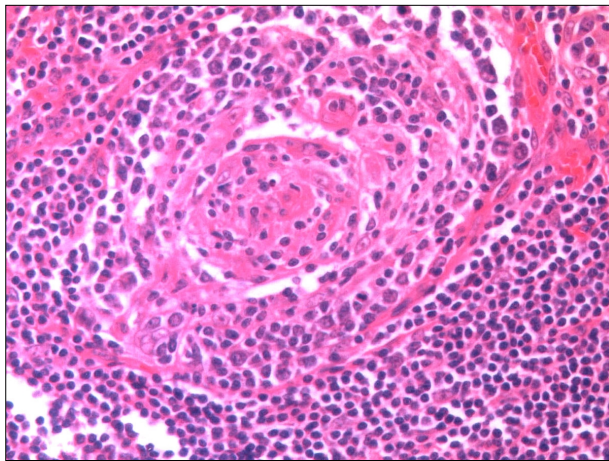


Fig. 3. Histopathology of a specimen of Castleman's disease. Concentric rings, or 'onion skinning' of mantle zone lymphocytes surrounding the center of follicle (H-E stain, × 100).

3 × 5 cm

(Fig. 2)

level

가

(carotid body tumor)

2003 11

3 × 5 cm

가

가 가

7

2004 2

(concentric) 가 'onion skinning' (Fig. 3).

1954

1)

2)

90%

4)

가

2)4)

가 , 71%

가

가 가 2)

2

10

5

가

3)

가

5)6)

