

21

Temporal Bone Fracture and Labyrinthine Concussion as Ataxic Gait in 21-Months-Old Child

Sun Wook Kim, M.D., Joon Ho Nah, M.D., Young Soon Cho, M.D., Young Hwan Choi, M.D., Hahn Shick Lee, M.D.

Blunt head injury can concuss the membranous labyrinth against the otic capsule. This results in acute hypofunction of some portion of the vestibular neural substrate within the affected labyrinth. Both labyrinthine concussions and transverse temporal bone fractures produce acute unilateral vestibular hypofunction. We describe a 21-months-old child who presented with a ataxic gait for two days. It is difficult to make diagnosis of labyrinthine concussions and temporal bone fractures in children, for we can not know the exact history of trauma and can not perform complete neurologic examination in children. When child present with ataxic gait, the emergency physician should consider labyrinthine concussion and temporal bone fracture in the differential diagnosis and take temporal bone CT.

Key Words: Labyrinth, Post-concussion syndrome, Ataxia

Department of Emergency Medicine, Yonsei University College of Medicine, Seoul, Korea



(petrous bone) (longitudinal fracture), 가 (transverse fracture) (mixed fracture), 85% 가 1). 가 (labyrinthine concussion), (perilymphatic fistular) (benign paroxysmal positional vertigo) 가 (transverse fracture) (cochlear) (vestibular labyrinth) . 가 (hemotympanium) 2). 6 ~ 8%, 10 ~ 22% 3).

21



21 가 2

가

146-92

Tel: 02) 2019-3030, Fax: 02) 3462-0713

E-mail: emer6657@yumc.yonsei.ac.kr

: 2005 9 30 , 1 : 2005 10 13

: 2005 12 13

2005

89

1.5 가 , 5 가 2 20

가 , 2 (, 가 ,)

(, 가 ,)
 4). Kelly Tamir⁵⁾ (otic capsule)

. 21 가 가 (caloric test)

가 (otic capsule-violating) 가

가

(Fig. 1).

(membranous labyrinth)

1 4 가 30

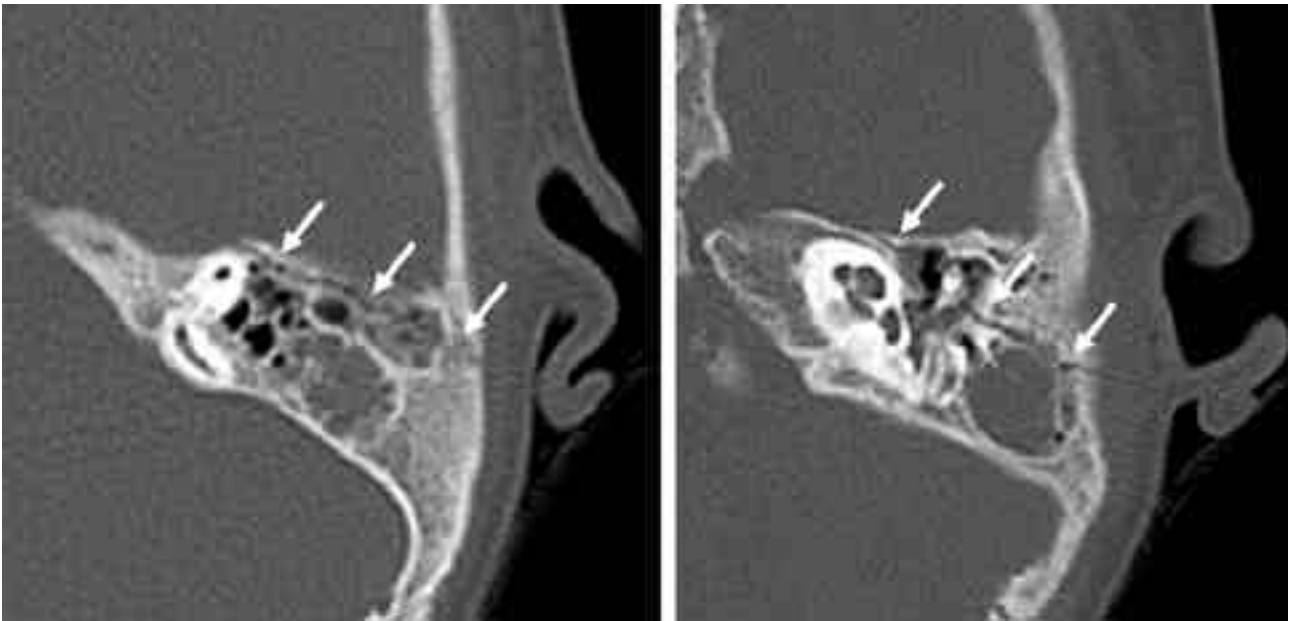


Fig. 1. Temporal bone CT shows the longitudinal temporal bone fracture not involving otic capsule (arrows).

가 가 가 (otic-sparing)

가 가 (perilymphatic fistular) (delayed endolymphatic hydrops)

가 가 (perilymphatic fistula), (BPPV) (delayed endolymphatic hydrops)

가 (round window) (oval window) (perilymphatic space)

“ (pressure fistula test) ” (cupulolithiasis) (canalolithiasis) (Hallpike manuever)

가 가



1. Ohlrogge M, Francis HW. Temporal bone fracture. *Otol Neurotol* 2004;25:195-6.
2. Friedman JM. Post-traumatic vertigo. *Med Health RI* 2004;87:296.
3. Harrison SE, Anand VK. Imaging case study of the month: pediatric temporal bone fractures. *Ann Otol Rhinol Laryngol* 2000;109:988-90.
4. Lin TF, Huang YC, Wang PC. Imaging case of the month: isolated transverse transcochlear temporal bone fracture. *Otol Neurotol* 2002;23:615-6.
5. Jackler RK, Brackmann DE. *Neurotology*. 1st ed. St. Louis: Mosby; 1994.p.1127-47.