

* , † , † , § , ‖
* . * † . * † . † † . § . † ‖ . * † . * †

Nonrotation of the Prearterial Segment of Midgut Presenting as Duodenal Obstruction in a 60-Year-Old Man

Ha Na Park, M.D.*, **Jae Jun Park, M.D.*†**, **Jae Hee Cheon, M.D.*†**,
Woo Jin Hyung, M.D.††, **Sang Ho Cho, M.D.§**, **Ki Hwang Kim, M.D.†‖**,
Tae Il Kim, M.D.*†, and **Won Ho Kim, M.D.*†**

*Departments of Internal Medicine**, *Division of Gastroenterology†*, *Surgery‡*,
Pathology§ and *Radiology‖*, *Yonsei University College of Medicine, Seoul, Korea*

Intestinal malrotation is a developmental anomaly resulting from embryologic failure of fixation and rotation of the gut and predisposed to midgut volvulus and small bowel obstruction. Although various forms of malrotation anomalies in the gut can occur, nonrotation of prearterial segment with the initial symptomatic presentation at advanced age has been rarely reported. Here, we report a case of nonrotation of the prearterial segment of the midgut presenting with duodenal obstruction in a 60-year-old man. To our best knowledge, this is the first case reported about nonrotation of prearterial segment of the midgut in Korea. (Korean J Gastroenterol 2010;55: 252-255)

Key Words: Intestinal malrotation; Nonrotation; Duodenal obstruction; Midgut

30 10

(intestinal malrotation) (midgut) . 80% 1 ,

(superior mesenteric artery) 0.2% . 8

.¹⁻³ 1883 Tschering retroarterial tunnel (superior me- 60

senderic vein) , 47

: 2009 10 11 , : 2009 11 4
: , 120-752, 134
Tel: (02) 2228-1990, Fax: (02) 393-6884
E-mail: geniushee@yuhs.ac

Correspondence to: Jae Hee Cheon, M.D.
Division of Gastroenterology, Department of Internal Medi-
cine, Yonsei University College of Medicine, 134, Shinchon-
dong, Seodaemun-gu, Seoul 120-752, Korea
Tel: +82-2-2228-1990, Fax: +82-2-393-6884
E-mail: geniushee@yuhs.ac

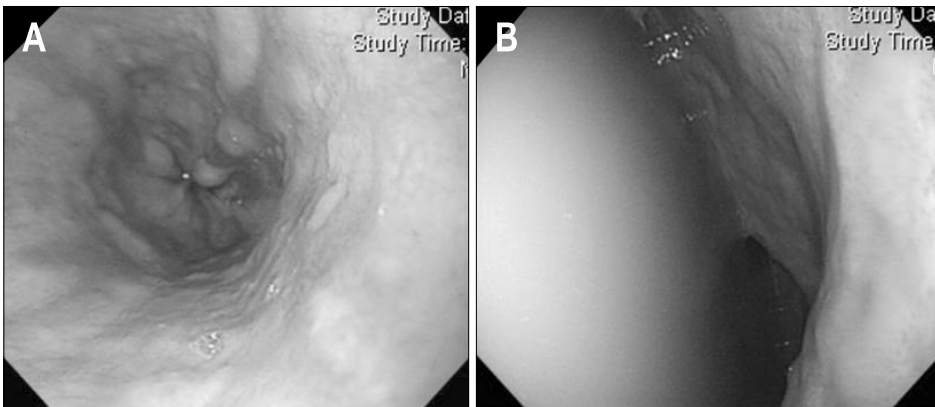


Fig 1. (A, B) Esophagogastro-duodenoscopic examination showed discrete red streaky superficial erosions longer than 5 mm, at esophagogastric junction just above Z-line and large amount of bile stasis in the stomach



Fig 2 Computed-tomography showed markedly distended duodenum proximal jejunum and abnormally located superior mesenteric vein (arrow).

137 g/dL, 39.8%, 8020/mm³,
 7.0 g/dL, 296,000/mm³,
 1.0 mg/dL, creatinine 1.0 mg/dL, 4.2 g/dL,

5 mm

(Fig 1).

2

270

(duodenojejunal junction)

(Fig 2).

2

(prearterial segment)

(nonrotation)

, Treitz

(Fig 3).

60

2

6

18

1

. 40

2

8 kg

100/60 mmHg

110

3

/ , 20 / ,

36.4°C

Ladd



Fig 3 Upper gastrointestinal series showed abnormal right-sided duodenojejunal flexure and segments of luminal narrowing of jejunum owing to an extrinsic process.

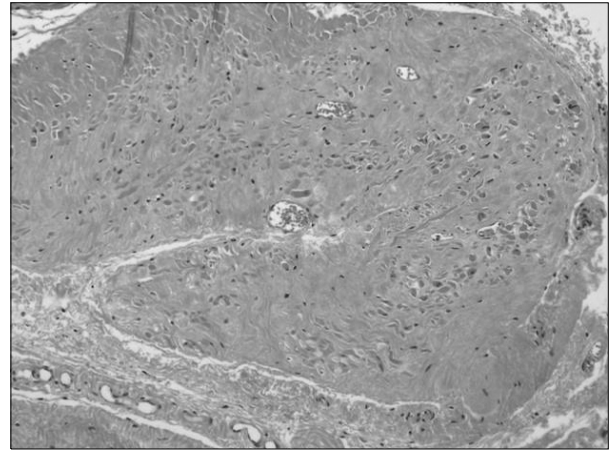
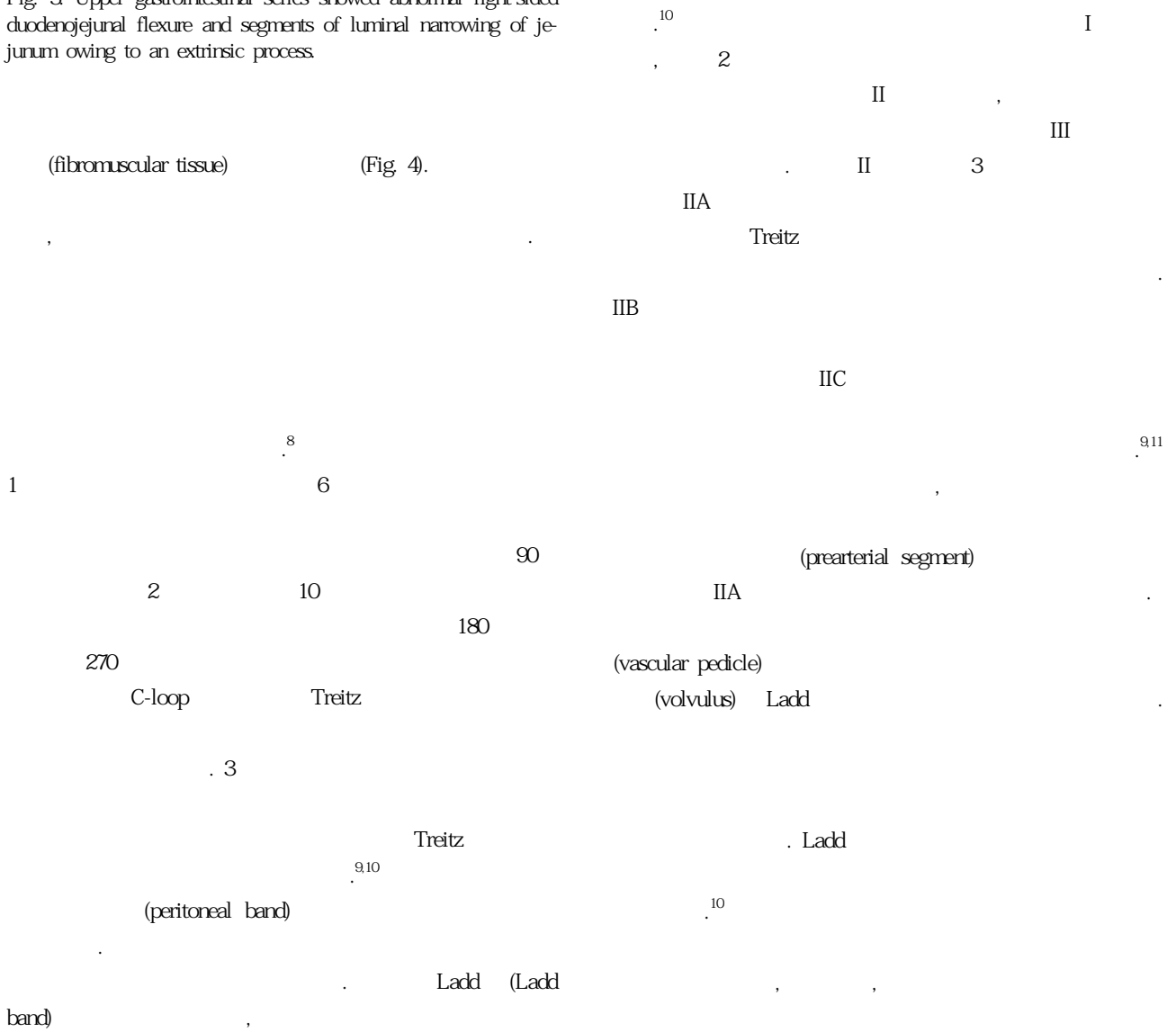


Fig 4 Microscopic appearance of the adhesion band revealed fibromuscular tissue (H&E stain, x100).

(fibromuscular tissue) (Fig 4).



- 12-15
- 2
- 2
- 60
- 16
- 10,12
- Ladd Ladd
- 17,18
- 10
- 60
1. Stewart DR, CA, Colodny AL, Daggett WC. Malrotation of the bowel in infants and children: a 15 year review. *Surgery* 1976;79:716-720.
 2. Aldridge RT. Intestinal malrotation in the adult. *N Z Med J* 1961;60:420-423.
 3. Truesdale PE. Retroposition of the transverse colon. *J Am Med Assoc* 1935;104:1697-1700.
 4. Haymond HE, Dragstedt LR. Anomalies of intestinal rotation. *Surg Gynecol Obstet* 1931;53:316-328.
 5. Scobie WG. A case of reversed rotation presenting as duodenal ileus. *Br J Surg* 1969;56:709-711.
 6. Wang CA, Welch CE. Anomalies of intestinal rotation in adolescents and adults. *Surgery* 1963;54:839-855.
 7. Gamblin TC, Stephens RE Jr, Johnson RK, Rothwell M. Adult malrotation: a case report and review of the literature. *Curr Surg* 2003;60:517-520.
 8. Park YB, Kim JI, Cheung DY, et al. A case of multiple intraabdominal anomalies including nonrotation of the intestine and a preduodenal portal vein. *Korean J Med* 2007;73:548-551.
 9. Frior HV, Harris VJ. Rotational abnormalities of the gut. *Am J Roentgenol Radium Ther Nucl Med* 1974;120:315-321.
 10. Choi JW, Kim KH, Seo HJ, et al. A case of intestinal non-rotation incidentally detected on DISIDA scan. *Korean J Med* 2002;62:566-569.
 11. Kanazawa T, Kasugai K, Miyata M, et al. Midgut malrotation in adulthood. *Intern Med* 2000;39:626-631.
 12. Dietz DW, Walsh RM, Grundfest-Broniatowski S, Lavery IC, Fazio VW, Vogt DP. Intestinal malrotation: a rare but important cause of bowel obstruction in adults. *Dis Colon Rectum* 2002;45:1381-1386.
 13. McIntosh R, Donovan EJ. Disturbances of rotation of the intestinal tract: clinical picture based on observations in 20 cases. *Am J Dis Child* 1939;57:116-166.
 14. Estrada RL. Anomalies of intestinal rotation and fixation (including mesentericoparietal hernias). Springfield, III: Thomas, 1958.
 15. Singer JA, Kom R. Reversed rotation of the midgut presenting as duodenal and transverse colon obstruction in a 19-year-old man. *J Am Coll Surg* 2003;197:1048-1049.
 16. Kim JS, Chung JY, Park DC, Kim SW, Kim HJ, Kim YH. A case of intestinal malrotation with midgut volvulus presenting with intermittent vomiting and abdominal pain. *Korean J Pediatr Gastroenterol Nutr* 2002;5:79-82.
 17. El-Gohary Y, Alagtal M, Gillick J. Long-term complications following operative intervention for intestinal malrotation: a 10-year review. *Pediatr Surg Int* 2010;26:203-206.
 18. Gong J, Zheng ZJ, Mai G, Liu XB. Malrotation causing duodenal chronic obstruction in an adult. *World J Gastroenterol* 2009;15:1144-1146.