

Prospective randomized controlled trial of  
sinus grafting using Escherichia-coli-  
produced rhBMP-2 with a biphasic  
calcium phosphate carrier compared to  
deproteinized bovine bone

Min-Soo Kim

Department of Dentistry  
The Graduate School, Yonsei University

Prospective randomized controlled trial of  
sinus grafting using Escherichia-coli-  
produced rhBMP-2 with a biphasic  
calcium phosphate carrier compared to  
deproteinized bovine bone

Directed by Professor Kyoo-Sung Cho

A Doctoral Dissertation

Submitted to the Department of Dentistry

the Graduate School of Yonsei University

in partial fulfillment of the requirements for the degree of

Ph.D. in Dental Science

Min-Soo Kim

December 2014

This certifies that the Doctoral  
Dissertation of Min-Soo Kim is approved.

---

Thesis Supervisor: Kyoo-Sung Cho

---

Jung-Kiu Chai

---

Seong-Ho Choi

---

Chong-Kwan Kim

---

Hyung-Jun Kim

The Graduate School  
Yonsei University

December 2014

## 감사의 글

먼저 여러모로 부족한 저를 이끌어 주시고 도움을 주신 조규성 교수님께 깊은 감사를 드립니다. 또한 치주과 의사로서의 지식뿐만이 아닌 인생을 살아가는 지혜도 함께 가르쳐 주신 김종관 교수님, 채중규 교수님, 최성호 교수님, 김창성 교수님, 정의원 교수님, 심사를 맡아주신 김형준 교수님께도 진심으로 감사 드립니다.

같이 치주과에 근무하는 동안 바쁘신 가운데 많은 조언을 주시고 힘이 되어주신 이중석 교수님, 박정철 교수님, 임현창 교수님, 그리고 치주과 의국원 여러분들께 깊은 감사를 드립니다.

어려서부터 지금까지 항상 저에게 롤모델이 되어주신 아버님, 저를 묵묵히 믿고 성원해 주신 어머님, 어떤 경우라도 저를 위해주시고 항상 기도해 주시는 장인, 장모님에 대한 감사의 마음은 모두 표현할 수 없을 정도입니다.

마지막으로 언제나 나의 곁을 지켜주는 그대라는 놀라운 사람, 사랑하는 아내와 무럭무럭 자라고 있는 귀여운 아들 영주에게 무한한 사랑과 고마움을 전합니다.

2014년 12월

저자 씬

# Table of Contents

<b>List of figures</b> .....	ii
<b>List of tables</b> .....	iii
<b>Abstract (English)</b> .....	iv
<b>I. Introduction</b> .....	1
<b>II. Materials and Methods</b> .....	4
1. Sample size .....	4
2. Randomization .....	5
3. Preparation of ErhBMP-2/BCP particles .....	5
4. Timetable and surgical procedures .....	6
5. Radiographic analysis .....	8
6. Histologic analysis .....	8
7. Histometric analysis .....	9
8. Statistical analysis .....	9
<b>III. Results</b> .....	11
1. Patient information .....	11
2. Clinical findings .....	12
3. Radiographic findings .....	13
4. Histologic findings .....	14
5. Histometric findings .....	15
<b>IV. Discussion</b> .....	18
<b>References</b> .....	23
<b>Figure legends</b> .....	26
<b>Figures</b> .....	29
<b>Abstract (Korean)</b> .....	36

## List of Figures

- Figure 1. Randomization and treatment allocation chart. .... 29
- Figure 2. Radiographic analysis based on superimposition of computed tomographies immediately and 24 weeks after surgery. .. 30
- Figure 3. Representative radiographic views of control and experimental sites immediately and 24 weeks after sinus augmentation. .... 31
- Figure 4. Results of height and volume change between immediately and 24 weeks after sinus augmentation measured in radiographs. .. 32
- Figure 5. Representative histologic view of low magnification used as an region of interest (ROI) used in histomorphometric analysis. .... 33
- Figure 6. Representative histologic view of high magnification. .... 34
- Figure 7. Histometric analysis measured in region of interest. .... 35

## List of Tables

Table 1. Demographics of patient population and maxillary sinus ..	12
Table 2. Measurements of radiographic and histometric analyses ...	16
Table 3. Measurements of radiographic and histometric analyses in subcategorical groups according to the existence of membrane perforation during sinus augmentation .....	17

Abstract

**Prospective randomized controlled trial of sinus grafting using Escherichia-coli-produced rhBMP-2 with a biphasic calcium phosphate carrier compared to deproteinized bovine bone**

Min-Soo Kim

Department of Dentistry

The Graduate School, Yonsei University

(Directed by Professor Kyoo-Sung Cho)

**Aim:** This study compared the effects of Escherichia-coli-produced recombinant human bone morphogenetic protein 2 (rhBMP-2) with a biphasic calcium phosphate (BCP) carrier to those of deproteinized bovine bone in human maxillary sinus floor augmentation.

**Materials and Methods:** Screening for this clinical trial selected 56 sites that provided informed consent to participate, of which 46 were ultimately enrolled and 41 were finally included in the study. The sites were divided into two groups using a random-number table, and the material was applied. A trephine biopsy was performed after 24 weeks, and implants wider than the biopsy site were inserted. Computed tomography and plain panoramic images were obtained immediately and then again at



24 weeks after the surgery. Radiographic images were reconstructed to allow measurement of the linear and volumetric changes. The biopsy samples were processed for histologic and histometric analyses.

**Results:** All sites healed uneventfully with no complications. Radiographic analysis revealed a tendency for the volume to increase, but the difference was not statistically significant in either group. Comparison of volumetric changes between the two groups also revealed no significant difference. Moreover, none of the histometric parameters differed significantly between the groups, although different healing patterns were observed on histologic analysis.

**Conclusion:** It can be concluded that the efficacy of ErhBMP-2 with a BCP carrier is comparable to that of deproteinized bovine bone for maxillary sinus floor augmentation. ErhBMP-2 did not enhance bone regeneration compared to conventional grafting biomaterial at 24 weeks after sinus augmentation.

---

**Keywords:** bone substitutes, clinical research, clinical trials, growth factors, sinus floor elevation

# **Prospective randomized controlled trial of sinus grafting using Escherichia-coli-produced rhBMP-2 with a biphasic calcium phosphate carrier compared to deproteinized bovine bones**

**Min-Soo Kim, D.D.S., M.S.D.**

*Department of Dental science*

*Graduate School, Yonsei University*

*(Directed by Professor Kyoo-Sung Cho, D.D.S., M.S.D., PhD.)*

## **I. Introduction**

Since introduction of maxillary sinus augmentation by Boyne and James<sup>1</sup>, it has been the treatment of choice for restoration using dental implants in a maxillary posterior area showing a severely resorbed alveolar ridge or a pneumatized sinus<sup>2</sup>. Many previous clinical studies have demonstrated successful bone regeneration in the augmented sinuses, and comparable implant survival rates to those in the existing alveolar bone<sup>3-6</sup>. Mordenfeld et al.<sup>7</sup> evaluated biopsy samples histologically at 11 years after maxillary sinus augmentation using deproteinized bovine bone, and demonstrated the presence of mature regenerated bone tissue with unresorbed graft biomaterials.

Various graft biomaterials have been used for sinus augmentation for dental implant placement, such as autogenous, allogenic, and xenogenic bone, synthetic biomaterials, and a mixture of these biomaterials. The use of autogenous and allogenic bone is subject to limitations such as the morbidity at the donor site, insufficient quantity, and excessive resorption at the recipient site after a long period of healing<sup>8,9</sup>. Therefore, many clinicians prefer using space-maintainable biomaterials for sinus augmentation, such as hydroxyapatite (HA), biphasic calcium phosphate (BCP), or deproteinized bovine bone<sup>10-12</sup>. Because maxillary sinus is a contained defect surrounding osteogenic sources, the bony sinus floor and walls, and the Schneiderian membrane, successful bone regeneration and favorable clinical results can occur even in sinus augmentation using an osteoconductive biomaterial rather than an osteoinductive one. However, in cases of an extensive defect of the maxillary sinus, long healing periods will be needed for the production of bone that would be of clinically acceptable quality for implant placement<sup>6</sup>.

To reduce the healing time for bone regeneration, recombinant human bone morphogenetic protein-2 (rhBMP-2) has been introduced and evaluated for used in various bone augmentation techniques in both the research and clinical fields. RhBMP-2 is a protein obtained from mammalian Chinese hamster ovarian cells, and was approved by the US FDA based on numerous clinical studies<sup>13-15</sup>. However, several recent in vitro and in vivo preclinical studies have demonstrated that Escherichia-coli-derived rhBMP-2 (ErhBMP-2) is comparable to rhBMPs derived from mammalian cells. Lee et al.<sup>16</sup> found that when applied with an absorbable

collagen sponge (ACS) carrier, ErhBMP-2 induced significantly superior bone regeneration in a rat calvarial defect model compared with the control condition, over a wide range of doses. Jung et al.<sup>17</sup> used an absorbable collagen block as a carrier for ErhBMP-2 to observe bone formation in the rat calvarial defect model, and confirmed the osteoinductivity of ErhBMP-2.

The previous study also demonstrated enhancement osteoinductivity from Schneiderian membrane in vitro and in vivo experiments by ErhBMP-2, in which BCP was used as a scaffold due to its osteoconductivity and its ability to carry growth factors<sup>18</sup>. BCP with ErhBMP-2 has also exhibited favorable results in the rat calvarial model<sup>19</sup>. In addition, block-type BCP lyophilized with ErhBMP-2 was shown to enhance new bone formation<sup>20</sup>. Various preclinical studies involving animal experiments have confirmed the osteoinductivity of ErhBMP-2 with a BCP carrier (ErhBMP-2/BCP), whereas few clinical studies have applied ErhBMP-2 to defect models that include the sinus graft. Therefore, the present study used computed tomography (CT) and histologic analyses to compare the effects of ErhBMP-2/BCP with those of deproteinized bovine bone as a conventional standard of graft biomaterial in human maxillary sinus augmentation.

## **II. Materials and Methods**

This study was designed as a single-blinded, randomized, controlled clinical trial performed at two single-centers (Dental hospital of Yonsei university and Inha university hospital). The protocols used in this study were approved by the Institutional Review Board for Clinical Research at Yonsei Dental Hospital (approval no. 2-2011-0006), and observed the Helsinki Declaration (as revised in Tokyo in 2004) and the Good Clinical Practice Guidelines. All of the included patients provided written informed consent to take part in the clinical experiments, and this manuscript was prepared according to CONSORT guidelines.

### **1. Sample size**

The sample size was calculated using G Power software (Version 3; Faul et al. 2009)<sup>21</sup>. The null hypothesis was that ErhBMP-2/BCP has superior bone regeneration capacity relative to deproteinized bovine bone for sinus augmentation. The histometric difference in new bone area between two groups was assumed to be 10% with 90% power and an alpha level of 0.1. The standard deviation of the outcome was set to 10%, in accordance with<sup>22</sup>. The required sample size per group was 18 subjects, and 20 subjects were scheduled to be enrolled in each group in this study based on an assumed dropout rate of 10%. Among the 52 patients who volunteered to participate

in this study, 46 who conformed to the inclusion criteria were enrolled. The number of sites per institute was determined as followed based on the number of participating surgeons: 44 at Institute A and 12 at Institute B (Fig. 1).

## **2. Randomization**

Random group assignment was performed using block randomization (SAS, SAS Institute, Cary, NC, USA). Computer-generated random numbers were sealed in opaque envelopes by an independent person. After elevating the Schneiderian membrane, the envelope was opened and the corresponding assigned material was brought to the surgeon by an assistant. The enrolled patients were not informed of the assigned materials.

## **3. Preparation of ErhBMP-2/BCP particles**

An *E. coli* expression system was used to produce ErhBMP-2 at the research institute of Cowellmedi (Busan, Korea). Microporous BCP (particle type, 0.5–1.0 mm diameter, 70% porosity; Bio-C, Cowellmedi) consisting of HA and beta-tricalcium phosphate at a ratio of 30:70 was used as the carrier for ErhBMP-2. ErhBMP-2 was coated onto BCP particles using a previously described lyophilization method<sup>20</sup>. Briefly, ErhBMP-2 solution (0.67 ml in 1.5 mg/ml buffer) was added to 1 g of BCP particles and lyophilized in a freeze-dryer. The solution was frozen on shelves that

were precooled to  $-43^{\circ}\text{C}$ . The formulations were dried in a condenser at  $-40^{\circ}\text{C}$  (primary drying) and maintained at that temperature for 3 h, after which they were transferred to a pressure chamber at 5 millitorr for 2 h. Secondary drying was performed on a shelf using the following temperature sequence:  $-20^{\circ}\text{C}$  for 4 h,  $-10^{\circ}\text{C}$  for 4 h,  $0^{\circ}\text{C}$  for 2 h, and  $20^{\circ}\text{C}$  for 20 h. The pressure in the chamber was maintained constant throughout the procedure.

#### **4. Timetable and surgical procedures**

Before the start of this trial, all researchers attended a calibration meeting at which an experienced senior surgeon (K.S.C.) described all steps of the surgical procedures to the participating surgeons. Antibiotics (500-mg amoxicillin or 150-mg roxithromycin) and analgesics (200-mg ibuprofen) were administered to all patients 1 hour before and then for 7 days after surgery. Sinus floor augmentation was performed by a lateral-approach technique using a specially designed opening kit (LAS-KIT, Osstem, Seoul, Korea) and a membrane-elevation kit (DASK, Dentium, Seoul, Korea). A crestal incision and mesial vertical incision were made at the operation site with the patient under local anesthesia. A full-thickness mucoperiosteal flap was elevated to expose the alveolar crest and lateral wall of the maxillary sinus. A standard osteotomy was performed using a specially designed drill to make a round window in the bone (7 mm in diameter), and Schneiderian membrane was carefully elevated. According to random group allocation, the graft material—deproteinized

bovine bone (Bio-Oss, Geistlich Biomaterials, Wolhuser, Switzerland) for control group and prefabricated ErhBMP-2/BCP (Cowell BMP, Cowellmedi, Busan, Korea)—was packed into the space once continuity of the Schneiderian membrane had been confirmed. A Valsalva maneuver was applied to patients after grafting of the materials to again check that the Schneiderian membrane had not been perforated. After the material was grafted, the mucoperiosteal flap was sutured closed with 4-0 glyconate absorbable monofilament (Monosyn, B-Braun, Aesculap, Center Valley, PA, USA), which was subsequently removed after 10–18 days. In order to acquire the initial parameters, postoperative radiographs were obtained immediately after completion of the sinus floor augmentation.

Preoperative radiographs were obtained immediately before the implant surgery—which took place 24 weeks after the sinus floor augmentation—to evaluate the grafted site. Following elevation of the full-thickness flap, a biopsy sample of the grafted area was obtained carefully along the long axis of the planned implant site using a trephine bur with an internal diameter of 3 mm. One biopsy site per one grafted sinus was selected. Implants with a larger diameter than the biopsy preparation were inserted following a common surgical protocol. In cases of reduced bone quality, specific surgical methods such as undersized final drilling and osteotome sinus floor augmentation were performed to achieve primary stability.



## **5. Radiographic analysis**

Various radiographs were obtained to evaluate the pathology, density, height, and width of the bone anatomy in the maxillary sinus. All acquired CT images were processed in DICOM format, and complete images that included the maxillary sinus area were analyzed using three-dimensional (3D) reconstruction software (OnDemand3D, CyberMed, Seoul, Korea). Sectional images acquired from the CT and plain panoramic radiographs were used to obtain the following linear measurement: the highest and lowest points of the grafted area (CT and plain images); the distance between the two points was calculated using a computer program. Volumetric changes were measured using polygonal cutting and color coding of the grafted area in reconstructed 3D images in each of three axes: coronal, sagittal, and axial. After processing, the volume of the isolated graft materials was measured automatically using a computer program (Fig. 2). The radiographic measurements were performed independently by two examiners (M.S.K. and H.K.S.).

## **6. Histologic analysis**

After the surgery, the trephined bony core that was removed at biopsy was carefully separated from the drills and decalcified in 5% formic acid over 14 days, and then embedded in paraffin. Serial coronal sections were cut along the center of each trephined specimen. The two central-most sections were chosen and stained

using hematoxylin and eosin and Masson's trichrome. The histologic slides were observed under a light microscope (BX50, Olympus, Tokyo, Japan), and analyzed qualitatively.

## **7. Histometric analysis**

Histometric analysis was performed using an automated image-analysis system (Image-Pro Plus, Media Cybernetics, Silver Spring, MD, USA) by two independent examiners (M.S.K. and H.K.S.) to qualitatively evaluate the bone regeneration. The following parameters were evaluated: the area of residual graft material (RG), the area of newly formed bone (NB), and the nonmineralized area (NM). NM was calculated as the remaining area that was not RG or NB.

## **8. Statistical analysis**

The mean and standard deviation values of all parameters were calculated for both the experimental and control groups in the radiographic and histometric analyses. The paired and unpaired t-tests were used to determine the significance of any differences between time points and between the two groups, respectively ( $P=0.05$ ). The interexaminer reliability for radiologic and histometric measurements was quantified using the interclass correlation coefficient (ICC). The ICCs were 0.869 and 0.966 with a 95% confidence level in radiographic and histometric analyses,

respectively, which indicates a high level of reliability in the measurements made by the two examiners.

### **III. Results**

#### **1. Patient information**

Fifty-six volunteers (44 at Institute A and 12 at Institute B) applied to take part in this clinical experiment between July 2011 and October 2012. Ten volunteers were excluded between the screening and enrollment phases: six withdrew their agreement to participate before the surgery and four had a severely damaged Schneiderian membrane during the membrane elevation and were therefore unable to receive sinus floor augmentation. Thus, 46 sites were enrolled in this clinical study, and they were randomly divided into 2 groups: control (n=23) and experimental (n=23), with 34 and 12 sites treated at Institutes A and B, respectively. Of these 46 sites, 5 were ultimately excluded after enrollment due to perforation of the Schneiderian membrane during the condensation of biomaterials in the elevated sinus (n=1), uncontrolled blood sugar levels (n=1), violation of the experimental schedule (n=1), and withdrawing their agreement to participate (n=2). This clinical trial was therefore completed with 41 sites (22 males and 19 females aged  $52.37 \pm 12.03$  years, mean $\pm$ SD) that underwent sinus floor augmentation and implant surgery. Thirty-one of the sites were treated at Institute A (16 and 15 in the control and experimental groups, respectively), and 10 were treated at Institute B (5 in both groups; Table 1 and Fig. 1).

**Table 1.** Demographics of patient population and maxillary sinus

	Experimental	Control
<i>Distribution of Patients</i>		
Age	52.70±13.55	51.95±10.80
Male/Female	9/11	13/8
Institute A/B	15/5	16/5
Right/Left	12/8	9/12
<i>Distribution of Maxillary Sinuses</i>		
Preexisting bone height	2.31±1.43 mm	1.74±0.72 mm
Augmented height immediately after surgery	13.22±1.97 mm	12.67±2.47 mm
Augmented height 24 weeks after surgery	14.51±3.27 mm	12,32±3.16 mm
Mesio-distal dimension	34.72±6.28 mm	34.70±5.06 mm
Bucco-palatal angle	70.80±14.99 mm	67.23±17.93 mm

## 2. Clinical findings

All sites healed without major complications associated with the failure of sinus augmentation, including postoperative infection. However, specific clinical findings including minor complications presented in some subjects, comprising postoperative swelling, pain, and bleeding (n=7 and 1 for control and experimental group, respectively), perforation of the Schneiderian membrane (smaller than 3 mm in all cases) (n=4 and 3), separated two chambers in one maxillary sinus area by septum, which led preparation of two window openings (n=1 and 1), poor bone quality where the implant was installed (n=0 and 2), and the presence of protruding grafted particles to oral cavity postoperatively near the window opening (n=0 and 1). In cases with a

small perforation of the Schneiderian membrane, grafting biomaterials were applied after application of a collagen membrane (Bio-Gide, Geistlich Biomaterials, Wolhuser, Switzerland) at the perforated area. After 24 weeks the grafted sites remained stable prior to the implant surgery, and primary stability of all inserted implants was obtained in all subjects except for one in the experimental group, who experienced osseointegration failure. The mean follow-up period after delivery of the final restoration of the inserted implants was 94.83 days at Institute A and 203.67 days at Institute B, and the cumulative survival rate of the total implants was 98.63%.

### **3. Radiographic findings**

Among the 41 sites, those with unusual scattering of the grafted material in the radiographs and in whom the proportional changes after 24 weeks exceeded 200% were regarded as having loss of continuity or breakdown of the Schneiderian membrane, and were excluded from the analysis (n=4). The height of the grafted area immediately after sinus floor augmentation was  $13.41 \pm 4.27$  mm in the experimental group and  $13.86 \pm 3.59$  mm in the control group on plain panoramic radiographs; after 24 weeks these heights had changed to  $13.66 \pm 4.75$  mm and  $14.17 \pm 4.19$  mm, respectively. In sectional CT images, the initial height of the grafted area was  $12.55 \pm 3.27$  mm in the experimental group and  $13.11 \pm 2.03$  mm in the control group; at 24 weeks after the sinus floor augmentation these heights were  $13.29 \pm 3.44$  mm and  $13.84 \pm 2.14$  mm, respectively. Two different methods were used in the volumetric

analysis in order to reduce measurement errors: (1) using computer software to demarcate the augmented area based on the presence of radiopacity, with the acquired volume was directly applied as data, and (2) using the air volume in the maxillary sinus to calculate the difference between two time points. Since dental CT images that showed the whole maxillary sinus (especially the upper portion) were not available, two images from different time points of the same patient were superimposed to determine the reference points. The outlined maxillary sinus comprised radiolucent (air) and radiopaque (grafted materials) areas, and the changes in the augmented volume were calculated based on changes in the air volume (Fig. 2). Radiographic analysis revealed a slight tendency toward an increase in both linear and volumetric changes in both groups, but the difference was not statistically significant between the two time points in either group. Comparison of volumetric changes between the two groups also revealed no significant differences (Fig. 3 and 4).

#### **4. Histologic findings**

Some differences in the healing pattern were observed on histologic analysis. In the experimental group, the surface of the BCP exhibited irregular morphology, possibly as a result of superficial resorption of the grafted material. Fatty marrow-like spaces were present between the RG and NB, especially in the experimental group. In contrast, the RG appeared to maintain its original morphology in the control group, even at 24 weeks after the surgery (Fig. 5 and 6).

## 5. Histometric findings

A region of interest was selected at most central area from the sinus floor to the uppermost point of the biopsy samples in all histologic sections. A biopsy was considered to have failed in subjects without native bone on the histologic slides, and was thus excluded from the histometric analysis. This resulted in three sites from the experimental group being excluded. The total areas were  $10.27 \pm 5.56$  mm<sup>2</sup> and  $7.69 \pm 11.07$  mm<sup>2</sup> in the control and experimental groups, respectively. RG was distinguished based on the presence of specific morphology in both groups. In the control group, grafted particles had a similar morphology to the NB, but was characterized by sharp edges, trabecular patterns, and hollow lacunae without viable cells. The grafted material in both groups was surrounded by fibrous tissues and NB. NM mainly comprised fibrous tissue, fatty marrow-like adipose tissue, and blood vessels. The area of NB was  $2.02 \pm 1.11$  mm<sup>2</sup> in the control group and  $1.85 \pm 4.08$  mm<sup>2</sup> in the experimental group; the corresponding RG areas were  $1.79 \pm 1.24$  mm<sup>2</sup> and  $1.45 \pm 1.21$  mm<sup>2</sup>, respectively, and those of NM were  $6.45 \pm 3.80$  mm<sup>2</sup> and  $4.39 \pm 6.23$  mm<sup>2</sup>. None of these parameters differed significantly between the two groups (Table 2 and Fig. 7).

All samples of both control and experimental groups were subcategorized to two types of sites, by whether small perforation of sinus membrane was occurred, to evaluate its effects as a confounding factor. These results were presented in Table 3. Although there were no differences in radiographically dimensional change or the



histologic proportion of newly formed bone, experimental sites with small perforation showed reduced area of newly formed bone ( $0.41 \pm 0.19 \text{ mm}^2$ ) compared to other subcategorical groups ( $2.14 \pm 4.44$ ,  $3.39 \pm 1.17$ , and  $2.05 \pm 1.13 \text{ mm}^2$  for experimental site without perforation, and control sites with/without perforation, respectively).

**Table 2.** Measurements of radiographic and histometric analyses

	Control		Experimental	
<b>Radiographic analyses</b>				
	Surgery	6 months	Surgery	6 months
Augmented height (2D)	$12.89 \pm 3.76$	$12.75 \pm 2.97$	$13.70 \pm 3.32$	$14.51 \pm 4.11$
Augmented height (3D)	$12.53 \pm 2.49$	$12.39 \pm 3.18$	$13.06 \pm 1.96$	$13.41 \pm 2.26$
Augmented volume (3D)	$267.96 \pm 182.40$	$279.94 \pm 186.76$	$197.59 \pm 88.29$	$205.41 \pm 81.20$
<b>Histometric analyses</b>				
Newly formed bone	$2.02 \pm 1.11$		$1.85 \pm 4.08$	
Residual biomaterials	$1.79 \pm 1.24$		$1.45 \pm 1.21$	
Non-mineralized tissue	$6.45 \pm 3.80$		$4.39 \pm 6.23$	

Augmented height (mm) was measured in 2D (plain panoramic view) and 3D (reconstructed CT view), but augmented volume ( $\text{mm}^2$ ) was measured in 3D.

**Table 3.** Measurements of radiographic and histometric analyses in subcategorical groups according to the existence of membrane perforation during sinus augmentation.

		Control		Experimental	
Radiographic analyses		Surgery	6 months	Surgery	6 months
Augmented height (2D)	Perfo.	14.72±2.30	13.63±3.60	14.82±3.80	13.57±3.68
	None	13.44±3.56	14.74±4.31	12.63±3.81	12.64±3.00
Augmented height (3D)	Perfo.	13.65±0.75	13.71±1.20	13.70±2.01	13.47±1.95
	None	12.88±2.19	13.31±2.54	12.31±2.56	12.20±3.36
Augmented volume (3D)	Perfo.	202.50±63.54	189.25±53.86	235.67±87.93	214.33±49.97
	None	288.11±203.67	307.85±205.42	189.43±89.43	203.50±87.79
Histometric analyses					
Newly formed bone	Perfo.	3.39±1.17		0.41±0.19	
	None	2.05±1.13		2.14±4.44	
Residual biomaterials	Perfo.	3.04±1.30		0.47±0.32	
	None	1.83±1.26		1.65±1.23	
Non-mineralized tissue	Perfo.	6.38±6.25		1.94±2.21	
	None	6.51±3.31		4.88±6.70	

Augmented height (mm) was measured in 2D (plain panoramic view) and 3D (reconstructed CT view), but augmented volume (mm<sup>2</sup>) was measured in 3D.

Perfo.: subcategorical group with small sinus membrane perforation in both control and experimental group.

None: subcategorical group without small sinus membrane perforation in both control and experimental group.

## IV. Discussion

This study aimed to quantify bone healing in a conventional sinus graft and in an alternative sinus graft that used ErhBMP-2, aided by radiographic and histologic analyses in humans, and was performed at two single-centers with a prospective, randomized, and single-blinded trial design. The authors hypothesized that ErhBMP-2 would enhance bone regeneration in augmented maxillary sinus, based on previous preclinical studies showing acceleration of bone healing processes and ectopic bone formation in various experimental models. However, the results obtained in the present study failed to show any superiority of ErhBMP-2 in sinus augmentation at 24 weeks after surgery relative to conventional sinus augmentation using the osteoconductive biomaterial.

In radiographic analysis, dimensional changes were evaluated by comparing between the time immediately and 24 weeks after surgery, and the experimental and control groups showed similar patterns of volumetric and linear changes between two time points; there was a slight increase in the volume and height of the augmented area, with no significant differences between the two groups. However, the experimental sites that received ErhBMP-2/BCP showed wider ranges of height and volume changes after 24 weeks, with a higher maximum value for both the height and volume. These results are consistent with a previous study finding a significantly increased augmentation volume at sites that received ErhBMP-2/BCP compared to

BCP only in the early healing period in a rabbit sinus augmentation model<sup>18</sup>. That study found that the augmented volume was decreased at a later time period but still showed a slightly increased volume. ErhBMP-2 was found to increase postoperative tissue swelling or seroma during the early healing processes<sup>23-25</sup>, and this could affect the volumetric change. However, all specimens in both of the groups showed a clinically acceptable volume for dental implant placement and that this volume did not change significantly.

All specimens analyzed histologically or histometrically in the present study showed evidence of new bone formation in the biopsy samples. Since these samples were taken at the site of a dental implant, histologic analyses were limited to within 10 mm from the alveolar ridge crest regardless of the preexisting alveolar bone and augmentation height. The bone density and the proportion of residual biomaterials were comparable within these areas at the control and experimental sites. These results were in accordance with a previous preclinical study finding similar bone healing in the entire augmented sinus area in a rabbit sinus model at 8 weeks after surgery using the same biomaterials as those used in the present clinical study<sup>18</sup>.

At the 2-week observational period, Choi et al.<sup>18</sup> found a peculiar healing pattern at the sites treated with ErhBMP-2 but not at the control sites without ErhBMP-2. While newly formed bone was concentrated in the peripheral area around the Schneiderian membrane, limited bone tissue could be observed in the central area of the augmented sinus. Although the healing period was much longer in the present

clinical study (24 weeks) than in that previous preclinical study, this healing pattern could have affected the bone density in the central area of the augmented sinus, and hindered the acquisition of histologic biopsy samples. The use of a trephine drill resulted in smaller histologic specimens being taken despite using the same protocol at all sites ( $10.27 \pm 5.56$  and  $7.69 \pm 11.07$  mm<sup>2</sup> at the control and experimental sites, respectively). Interestingly, three experimental sites with small membrane perforation showed limited new bone tissue in histologic samples, while control sites with perforation showed comparable results to the other sites. This might be caused by healing mechanism that was dependent on the increase of osteoinductivity from Schneiderian membrane by ErhBMP-2, which had demonstrated in the previous animal study<sup>18</sup>. These results are consistent with a previous clinical study also finding that rhBMP-2 exerted negative effects on bone regeneration and density in sinus augmentation<sup>26</sup>. However, all of the other clinical, radiographic, and histologic parameters were indicative of comparable results in the control and experimental groups in the present study. Only one implant (in the experimental group) failed to acquire initial stability, and successful bone regeneration contacting with the residual biomaterial particles was evident in all of the acquired histologic samples. Therefore, like deproteinized bovine bone, ErhBMP-2/BCP can be used as a grafting biomaterial in sinus augmentation.

The present clinical study was subject to some limitations in evaluating the separate effects of ErhBMP-2. To evaluate the effects of ErhBMP-2 on accelerating bone healing processes in sinus augmentation, biopsy and implantation should have

been performed earlier than when the final conventional clinical outcome occurs in order to compare the early phase of bone healing processes. However, the present clinical study was designed conservatively due to ethical issues, and this could have affected comparisons between the control and experimental groups. In addition, the scaffolding biomaterials differed between the two groups, with deproteinized bovine bone used at control sites as a conventional standard of graft biomaterial and BCP used at experimental sites, since this is the only biomaterial approved for use in conjunction with ErhBMP-2 in Korea according to domestic law. Therefore, the present results would be more conservative than those obtained in previous preclinical studies using the same biomaterials, and so further studies should be performed using various observational periods and scaffolding biomaterials.

Within the limitations of this study, it can be concluded that the efficacy of ErhBMP-2 with a BCP carrier is comparable to that of deproteinized bovine bone for maxillary sinus floor augmentation in terms of clinical, radiographic, and histologic parameters. However, ErhBMP-2 did not enhance of bone regeneration compared to conventional grafting biomaterial at 24 weeks after sinus augmentation.

## **Acknowledgement**

This study was supported by a grant of the Korea Health technology R&D Project, Ministry of Health & Welfare, Republic of Korea (no. A110266).

## REFERENCES

1. Boyne PJ, James RA. Grafting of the maxillary sinus floor with autogenous marrow and bone. *J Oral Surg* 1980;38:613-6.
2. Wallace SS, Froum SJ. Effect of maxillary sinus augmentation on the survival of endosseous dental implants. A systematic review. *Ann Periodontol* 2003;8:328-43.
3. Browaeys H, Bouvry P, De Bruyn H. A literature review on biomaterials in sinus augmentation procedures. *Clin Implant Dent Relat Res* 2007;9:166-77.
4. Pjetursson BE, Tan WC, Zwahlen M, Lang NP. A systematic review of the success of sinus floor elevation and survival of implants inserted in combination with sinus floor elevation. *J Clin Periodontol* 2008;35:216-40.
5. Esposito M, Grusovin MG, Felice P, Karatzopoulos G, Worthington HV, Coulthard P. The efficacy of horizontal and vertical bone augmentation procedures for dental implants - a Cochrane systematic review. *Eur J Oral Implantol* 2009;2:167-84.
6. Nkenke E, Stelzle F. Clinical outcomes of sinus floor augmentation for implant placement using autogenous bone or bone substitutes: a systematic review. *Clin Oral Implants Res* 2009;20 Suppl 4:124-33.
7. Mordenfeld A, Hallman M, Johansson CB, Albrektsson T. Histological and histomorphometrical analyses of biopsies harvested 11 years after maxillary sinus floor augmentation with deproteinized bovine and autogenous bone. *Clin Oral Implants Res* 2010;21:961-70.
8. Clavero J, Lundgren S. Ramus or chin grafts for maxillary sinus inlay and local onlay augmentation: comparison of donor site morbidity and complications. *Clin Implant Dent Relat Res* 2003;5:154-60.
9. Andersson L. Patient self-evaluation of intra-oral bone grafting treatment to the maxillary frontal region. *Dent Traumatol* 2008;24:164-9.
10. Lindgren C, Mordenfeld A, Johansson CB, Hallman M. A 3-year clinical follow-up of implants placed in two different biomaterials used for sinus augmentation. *Int J Oral Maxillofac Implants* 2012;27:1151-62.



11. Oliveira R, El Hage M, Carrel JP, Lombardi T, Bernard JP. Rehabilitation of the edentulous posterior maxilla after sinus floor elevation using deproteinized bovine bone: a 9-year clinical study. *Implant Dent* 2012;21:422-6.
12. Schmitt CM, Doering H, Schmidt T, Lutz R, Neukam FW, Schlegel KA. Histological results after maxillary sinus augmentation with Straumann(R) BoneCeramic, Bio-Oss(R), Puros(R), and autologous bone. A randomized controlled clinical trial. *Clin Oral Implants Res* 2013;24:576-85.
13. Boyne PJ, Marx RE, Nevins M, Triplett G, Lazaro E, Lilly LC, et al. A feasibility study evaluating rhBMP-2/absorbable collagen sponge for maxillary sinus floor augmentation. *Int J Periodontics Restorative Dent* 1997;17:11-25.
14. Boyne PJ, Lilly LC, Marx RE, Moy PK, Nevins M, Spagnoli DB, et al. De novo bone induction by recombinant human bone morphogenetic protein-2 (rhBMP-2) in maxillary sinus floor augmentation. *J Oral Maxillofac Surg* 2005;63:1693-707.
15. Triplett RG, Nevins M, Marx RE, Spagnoli DB, Oates TW, Moy PK, et al. Pivotal, randomized, parallel evaluation of recombinant human bone morphogenetic protein-2/absorbable collagen sponge and autogenous bone graft for maxillary sinus floor augmentation. *J Oral Maxillofac Surg* 2009;67:1947-60.
16. Lee JH, Kim CS, Choi KH, Jung UW, Yun JH, Choi SH, et al. The induction of bone formation in rat calvarial defects and subcutaneous tissues by recombinant human BMP-2, produced in *Escherichia coli*. *Biomaterials* 2010;31:3512-9.
17. Jung JH, Yun JH, Um YJ, Jung UW, Kim CS, Choi SH, et al. Bone formation of *Escherichia coli* expressed rhBMP-2 on absorbable collagen block in rat calvarial defects. *Oral Surg Oral Med Oral Pathol Oral Radiol Endod* 2011;111:298-305.
18. Choi Y, Lee JS, Kim YJ, Kim MS, Choi SH, Cho KS, et al. Recombinant human bone morphogenetic protein-2 stimulates the osteogenic potential of the Schneiderian membrane: a histometric analysis in rabbits. *Tissue Eng Part A* 2013;19:1994-2004.
19. Jang JW, Yun JH, Lee KI, Jang JW, Jung UW, Kim CS, et al. Osteoinductive activity of biphasic calcium phosphate with different rhBMP-2 doses in rats. *Oral Surg Oral Med Oral Pathol Oral Radiol* 2012;113:480-7.
20. Kim JW, Choi KH, Yun JH, Jung UW, Kim CS, Choi SH, et al. Bone formation of block and particulated biphasic calcium phosphate lyophilized with *Escherichia coli*-derived recombinant human bone morphogenetic protein 2 in rat

- calvarial defects. *Oral Surg Oral Med Oral Pathol Oral Radiol Endod* 2011;112:298-306.
21. Faul F, Erdfelder E, Buchner A, Lang AG. Statistical power analyses using G\*Power 3.1: tests for correlation and regression analyses. *Behav Res Methods* 2009;41:1149-60.
  22. Cordaro L, Bosshardt DD, Palattella P, Rao W, Serino G, Chiapasco M. Maxillary sinus grafting with Bio-Oss or Straumann Bone Ceramic: histomorphometric results from a randomized controlled multicenter clinical trial. *Clin Oral Implants Res* 2008;19:796-803.
  23. Smucker JD, Rhee JM, Singh K, Yoon ST, Heller JG. Increased swelling complications associated with off-label usage of rhBMP-2 in the anterior cervical spine. *Spine (Phila Pa 1976)* 2006;31:2813-9.
  24. Leknes KN, Yang J, Qahash M, Polimeni G, Susin C, Wikesjo UM. Alveolar ridge augmentation using implants coated with recombinant human bone morphogenetic protein-2: radiographic observations. *Clin Oral Implants Res* 2008;19:1027-33.
  25. Shah MM, Smyth MD, Woo AS. Adverse facial edema associated with off-label use of recombinant human bone morphogenetic protein-2 in cranial reconstruction for craniosynostosis. Case report. *J Neurosurg Pediatr* 2008;1:255-7.
  26. Kao DW, Kubota A, Nevins M, Fiorellini JP. The negative effect of combining rhBMP-2 and Bio-Oss on bone formation for maxillary sinus augmentation. *Int J Periodontics Restorative Dent* 2012;32:61-7.

## Figure Legends

**Figure 1.** Randomization and treatment allocation chart.

**Figure 2.** Radiographic analysis based on superimposition of computed tomographies immediately and 24 weeks after surgery. The augmented area could be observed on 3-dimensionally reconstructed images (red arrowheads) at immediately (a) and 24 weeks (b) after surgery, and these could be superimposed by unchangeable structures, like zygomatic arch, nasal septum, etc). After superimposition of reconstructed images, superimposed sectional images (d) can provide the dimensional changes from the time point immediately after surgery (c) and 24 weeks after the augmentation (e). Colorfully accentuated image: samples from 24-week observational period, dotted line: roof of the augmented area immediately after surgery.

**Figure 3.** Representative radiographic views of control and experimental sites immediately and 24 weeks after sinus augmentation. (a) Control sites immediately after the surgery, (b) control sites after 24weeks from the surgery. (c) Experimental sites immediately after the surgery, (d) Experimental sites after 24weeks from the surgery.

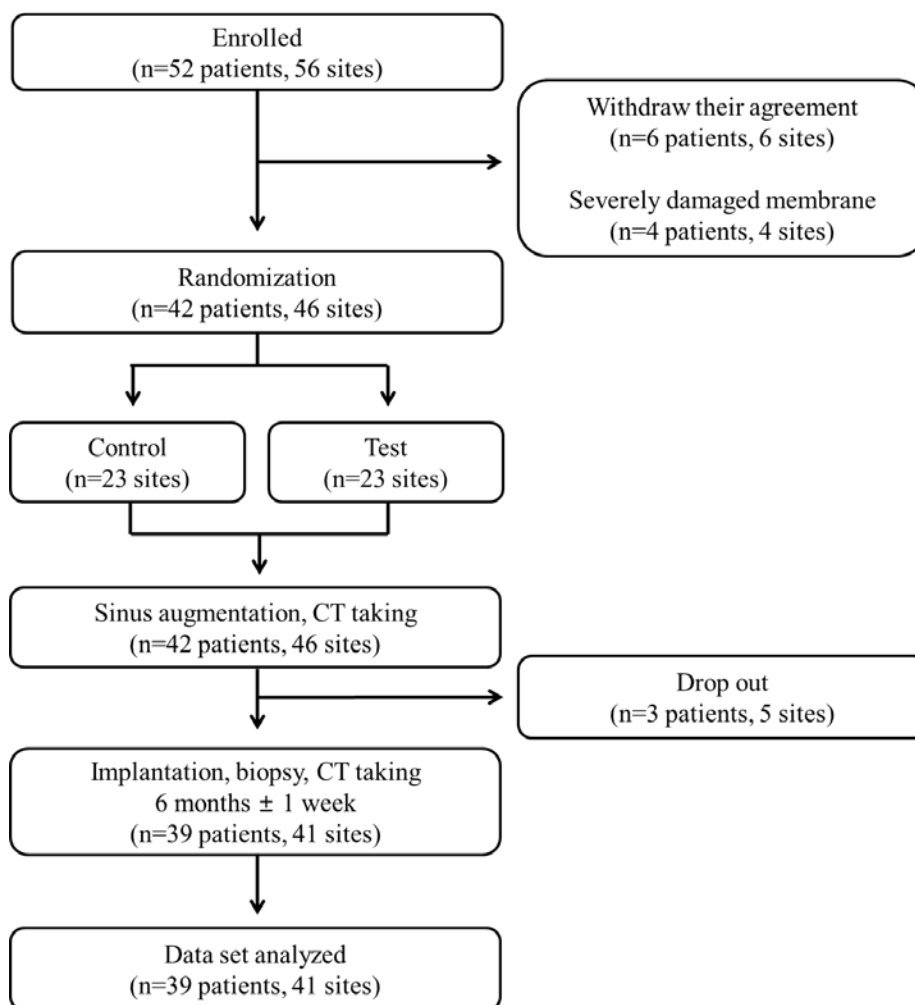
**Figure 4.** Results of height and volume change between immediately and 24 weeks after sinus augmentation measured in radiographs.

**Figure 5.** Representative histologic view of low magnification used as a region of interest (ROI) used in histomorphometric analysis. The lower border of the ROI corresponded to the lowest portion of the graft material, and the upper border corresponded to the highest portion of the trephined biopsy. (a) Control group; (b) experimental group (H-E;  $\times 40$ ).

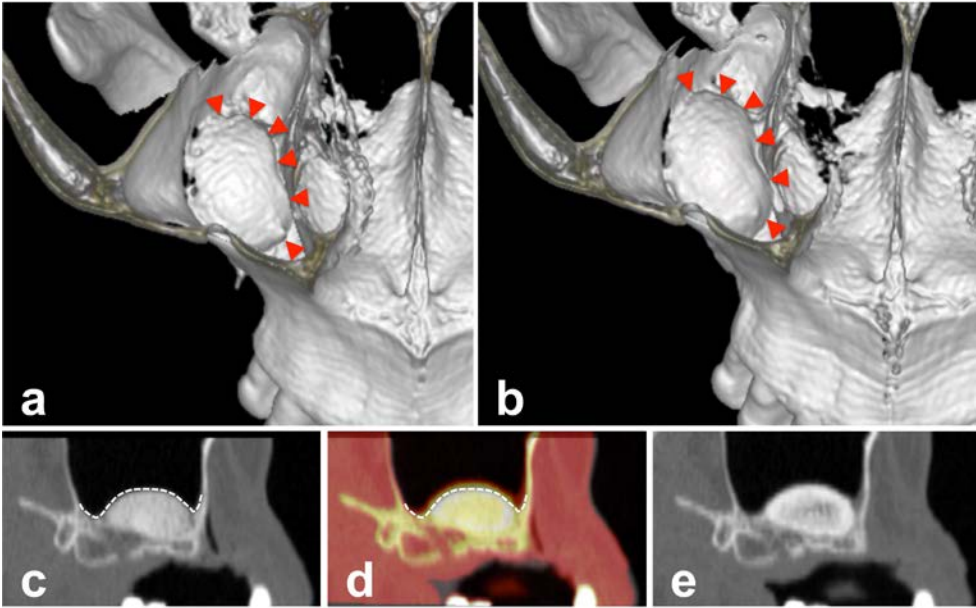
**Figure 6.** Representative histologic view of high magnification. (a) Histologic findings in the experimental group. The grafted particles were surrounded by NB as immature bony tissue. Nonmineralized tissues were composed mainly of fatty marrow-like tissue (FM) and there appeared to be adipose-tissue-rich zones. (b) A multinucleated cell (square box), assumed to be an osteoclast, was in contact with the grafted material in the experimental group. (c) Histologic findings in the control group. NB with many viable cells was observed between the grafted particles. The original morphology of the material was a cell-poor bony tissue [hematoxylin and eosin stain (H-E);  $\times 100$ ].

**Figure 7.** Histometric analysis measured in region of interest. (NB = new bone, RG = residual graft, NM = non-mineralized area)

## Figures



**Figure 1.**



**Figure 2.**

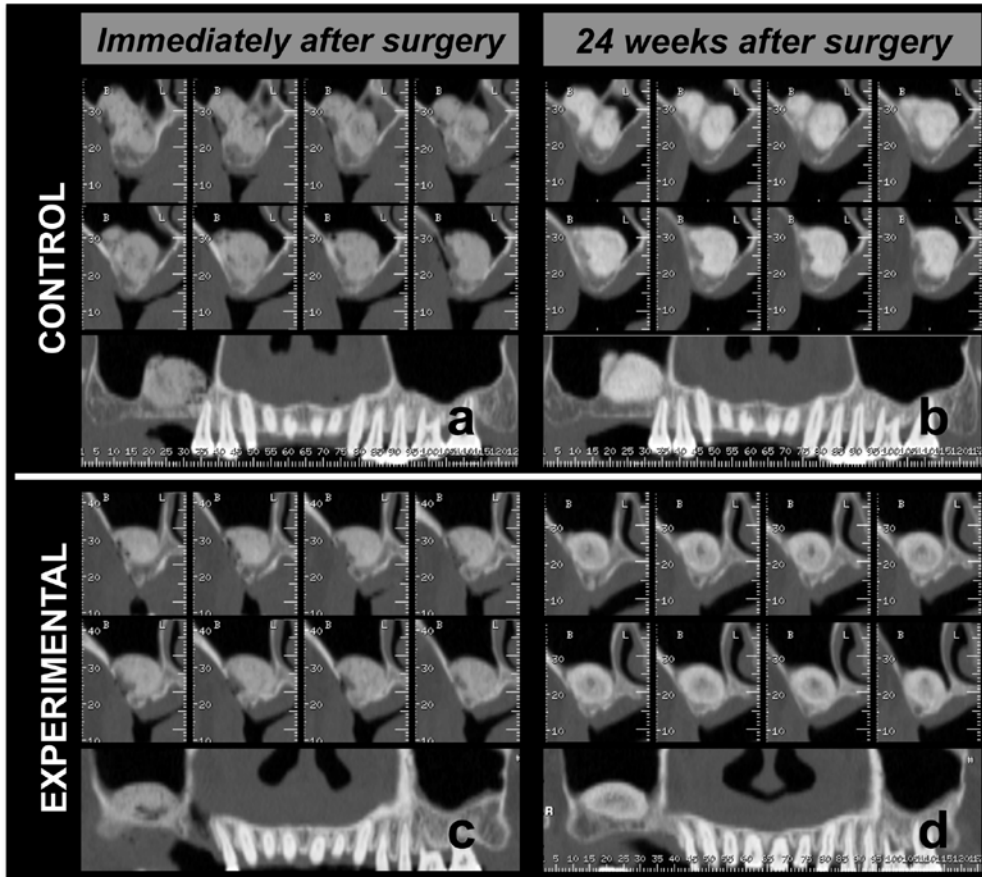
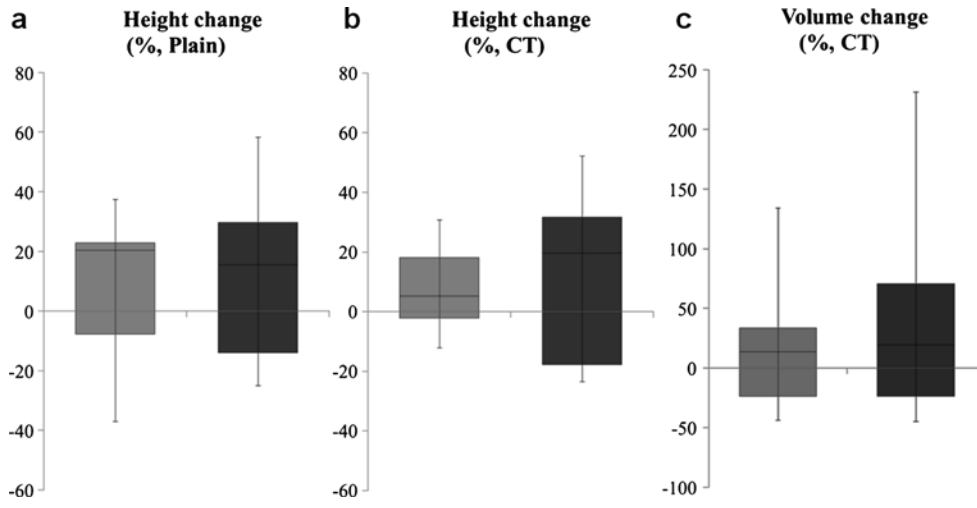
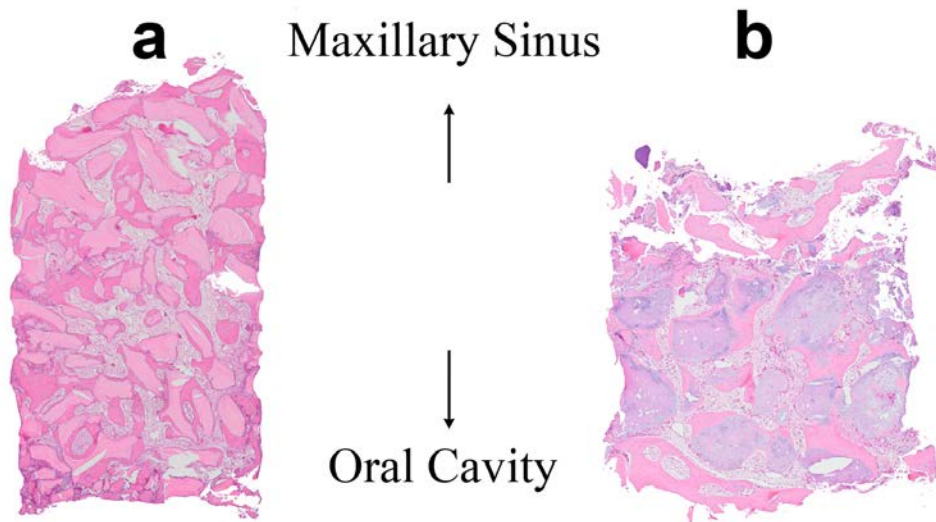


Figure 3.

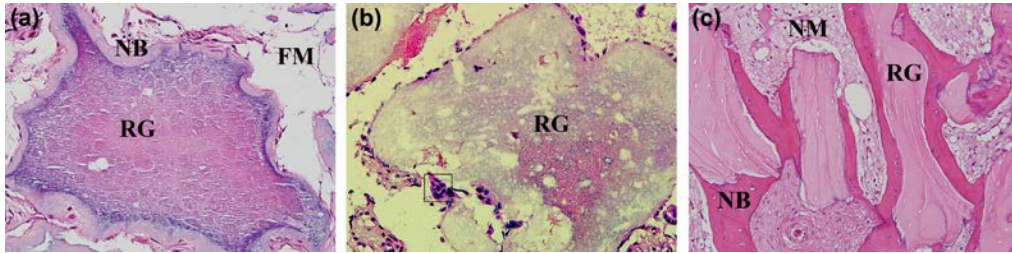




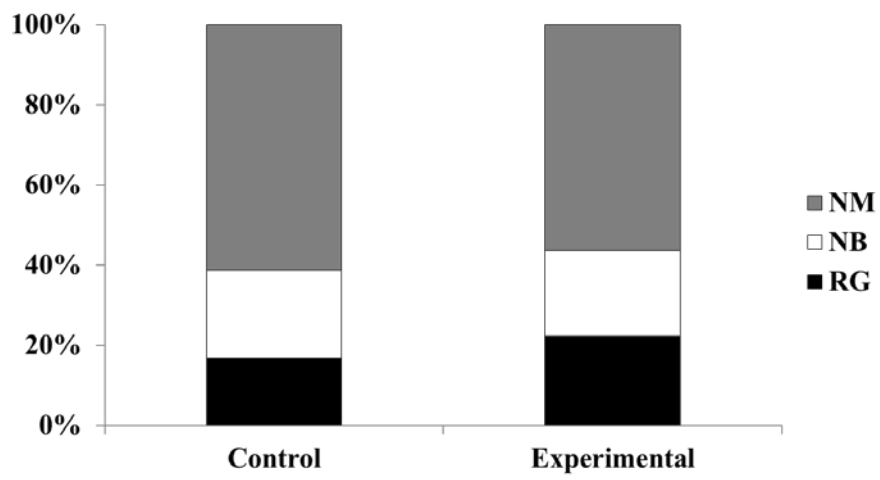
**Figure 4.**



**Figure 5.**



**Figure 6.**



**Figure 7.**

국문요약

**상악동 거상술에서 *E. coli* 유래 골형성 유도단백질  
결합 이상칼슘포스페이트와 탈단백 우골의  
골생성에 대한 전향적 임상 연구**

<지도교수 조규성>

연세대학교 대학원 치의학과

**김 민 수**

본 연구의 목적은 사람의 상악동 거상술시 이상 칼슘포스페이트와 결합된 E-coli 를 이용하여 생산된 2 형 골형성유도단백질과 탈단백 우골을 적용하였을 때의 효과를 비교하는 것이다.

총 56 개의 상악동을 검사 하였으며 실험 참가 동의서와 술전 주의사항 등을 전달 하였다. 46 개의 상악동을 선별 하였으며 최종적으로 41 개의 상악동을 연구에 사용하였다. 난수표를 이용하여 대조군과 실험군을 나눈뒤 시험이 진행되었으며 이식재 적용후 24 주에 관상톱 생체검사와 동시에 검사부위보다 넓은 직경의 임플란트를 식립하였다.

전산화 단층 촬영과 파노라마 방사선 사진을 이용하여 이식재의 높이 변화를 측정하였으며 3 차원적 재구성을 통해 부피의 변화도 측정하였다. 생검 표본에 대해서는 조직학적, 조직계측학적 관찰을 시행하였다.

모든 시험부위는 특이할 만한 합병증 없이 치유되었다. 방사선학적 분석 결과 부피는 점진적인 증가 경향을 보였으나 통계학적인 유의성은 없었으며 두 군간의 변화량 사이에도 통계학적인 유의성은 없었다. 또한 조직학적 분석 결과, 치유 양상은 약간의 차이를 보였으나 조직계측학적 결과에서는 두 군간에 유의할 만한 차이가 없었다.

본 연구의 결과 이상 칼슘포스페이트 전달체 결합 골형성유도단백질은 상악동 거상술시 탈단백 우골과 비교할 만한 효과를 보였다. 이는 이상 칼슘포스페이트 전달체 결합 골형성유도단백질이 종전의 이식재인 탈단백 우골과 비교했을 때 골재생을 향상시키지는 못했음을 보여준다.

---

**핵심되는 말:** 골이식재, 임상시험, 성장인자, 상악동 거상술